



How to Hook up Front Panel Connectors to an ATX Motherboard

In this guide I will detail how to properly connect the front panel connectors of a mid tower computer case to an ATX motherboard with ASUS Z490 Wi-Fi.

Written By: Nathan Carini



INTRODUCTION

When it comes to building a computer it takes lots of time and determination to put everything together. By splitting up a big project into smaller pieces, the project becomes much less daunting. In this guide, I will detail how to hook up your front panel connectors from your computer chassis to your ATX Motherboard with ASUS Z490 Wi-Fi (ASIN: B086QSD3M4). In other words, I will teach you how to get your front panel inputs/outputs (Reset, Power On, LED Power light) to actually work.

When building a computer it is necessary to ensure that your motherboard is compatible with all other components including the computer chassis.

WARNING:

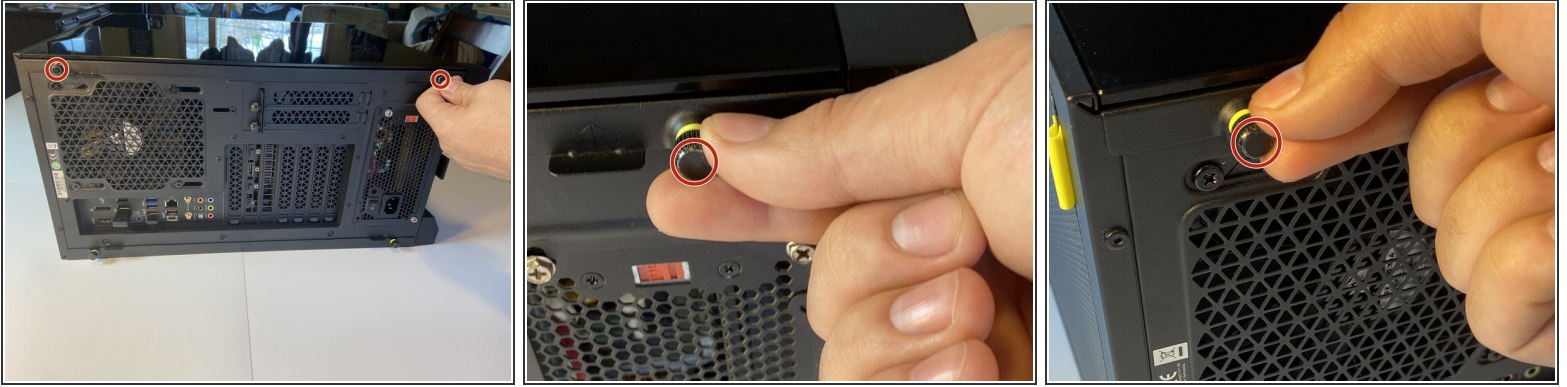
- Do not work on a motherboard on the carpet. Static electricity can fry the motherboard.



TOOLS:

- [Phillips #2 Screwdriver](#) (1)
-

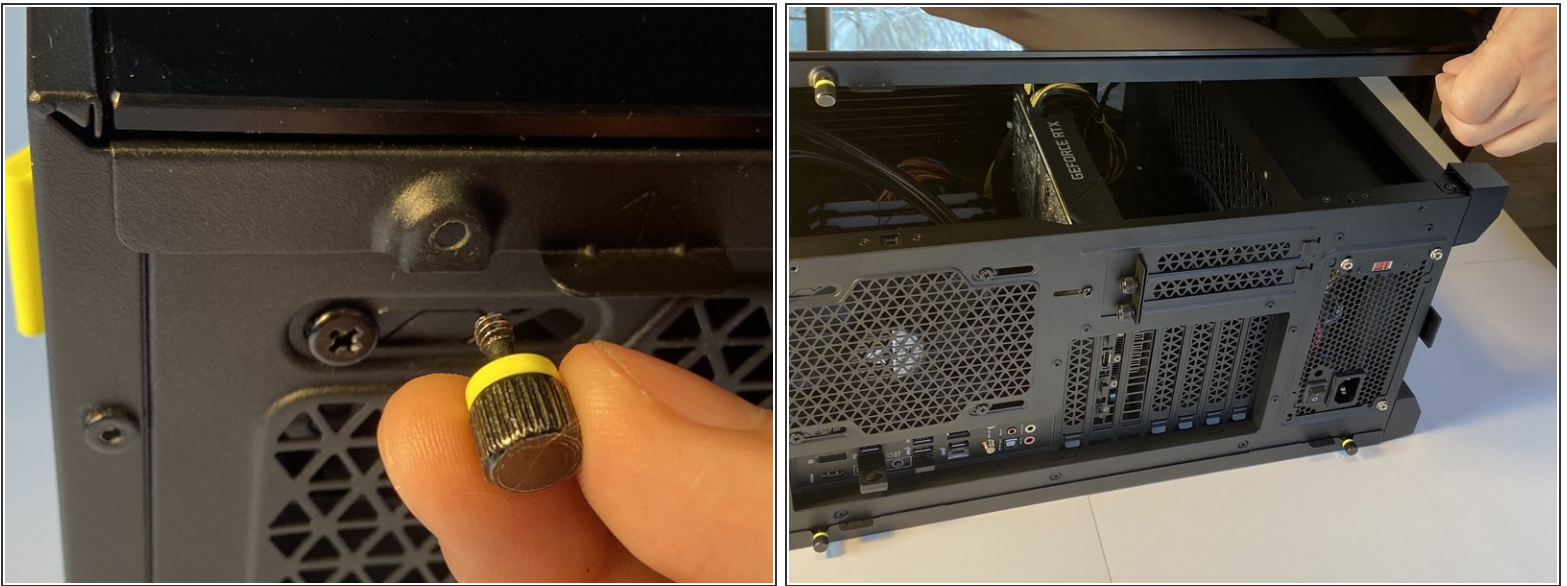
Step 1 — How to Hook up Front Panel Connectors to an ATX Motherboard



- Lay your PC on its side and unscrew the side panel thumb screws. (Open your PC case)

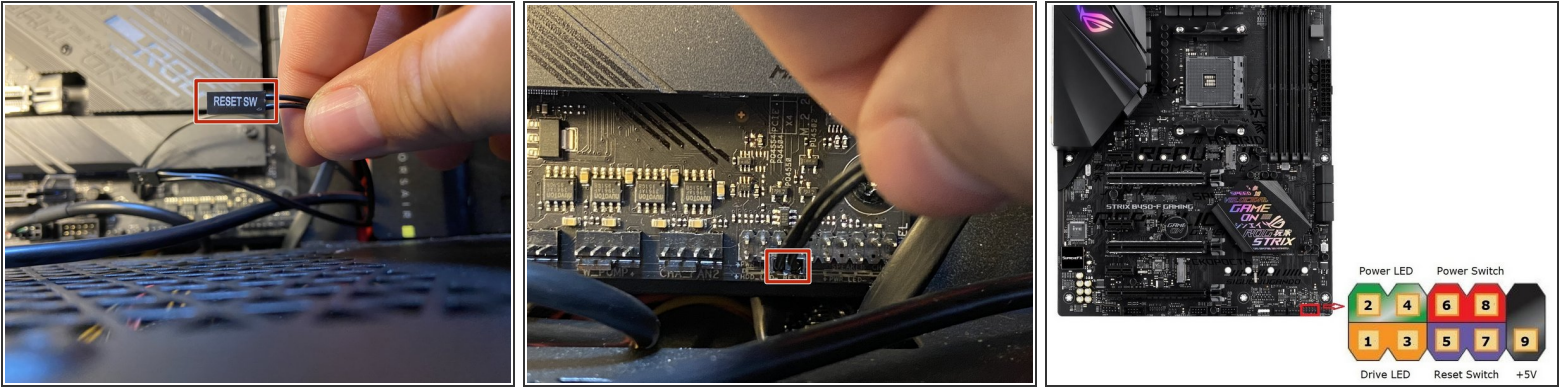
i For some computer cases you may need a screw driver to remove actual screws.

Step 2



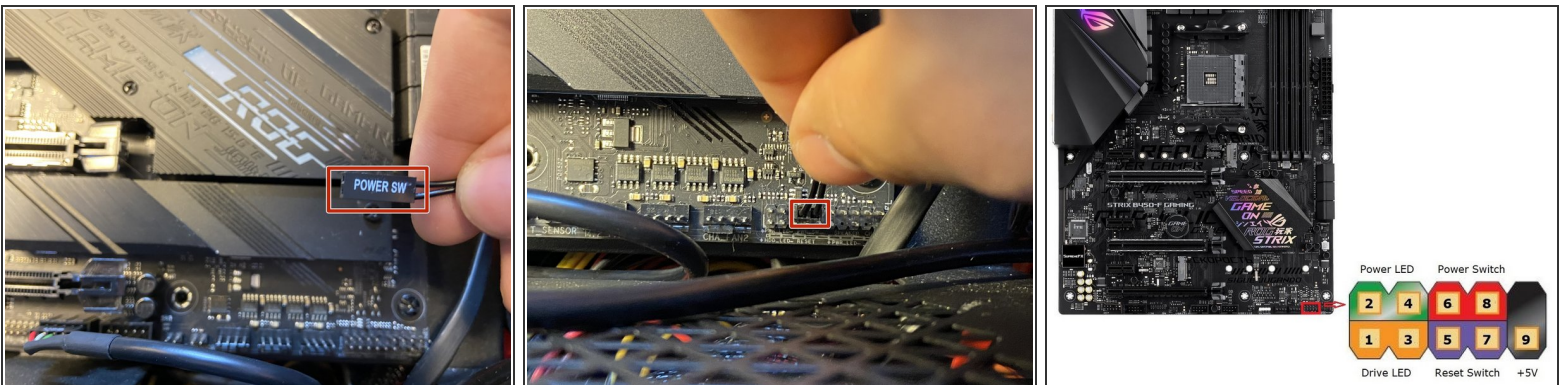
- Once the screws are removed lift off the side panel to expose the motherboard and internal cables.
- Locate where the front panel pins are.

Step 3



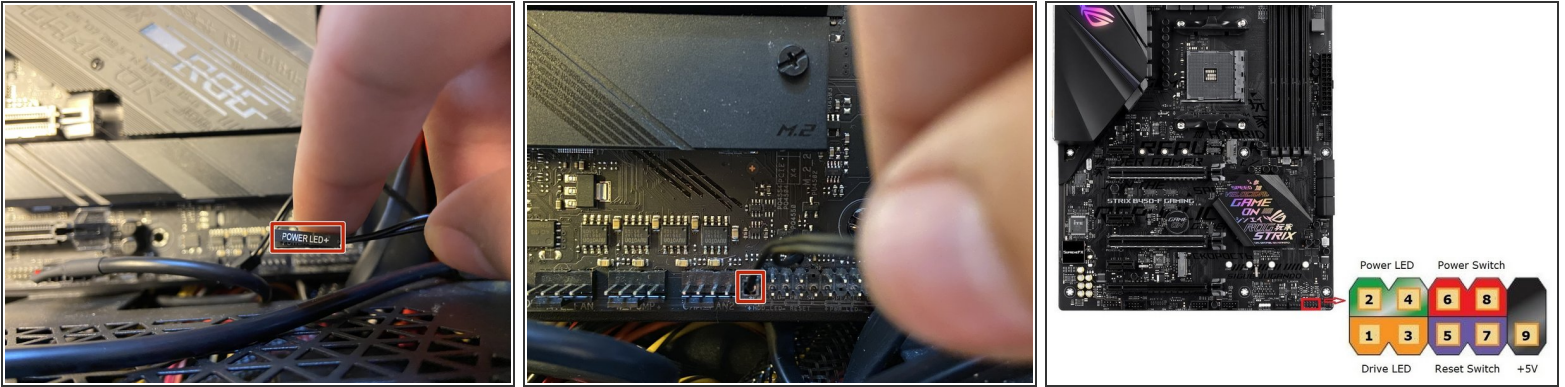
- Plug the cable marked Reset SW into the motherboard. This will allow your reset button to actually work.

Step 4



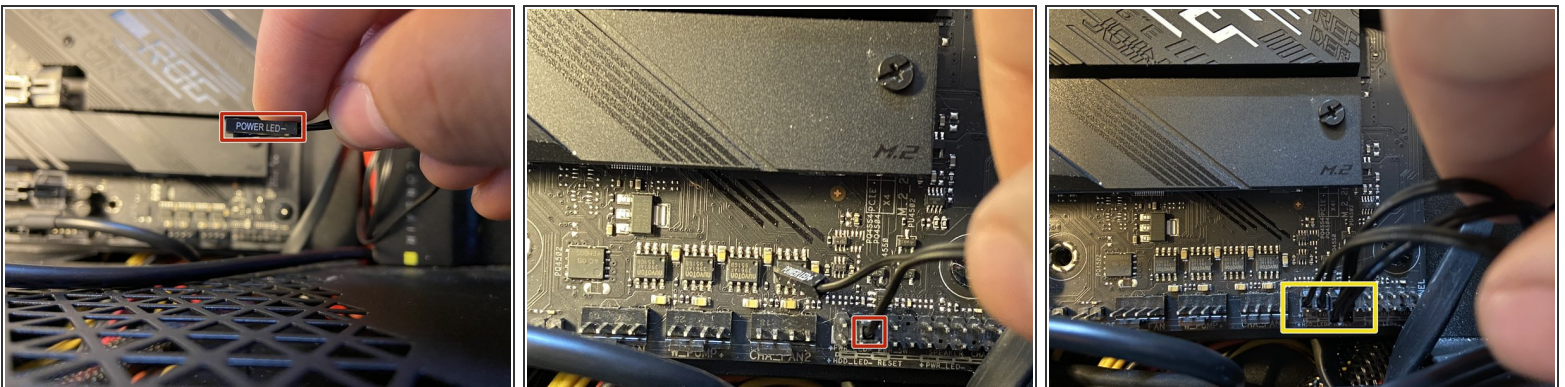
- Plug the Power SW cable in above the Reset SW on the motherboard. This will allow you to turn on your computer with the power button on the front of your PC case.

Step 5



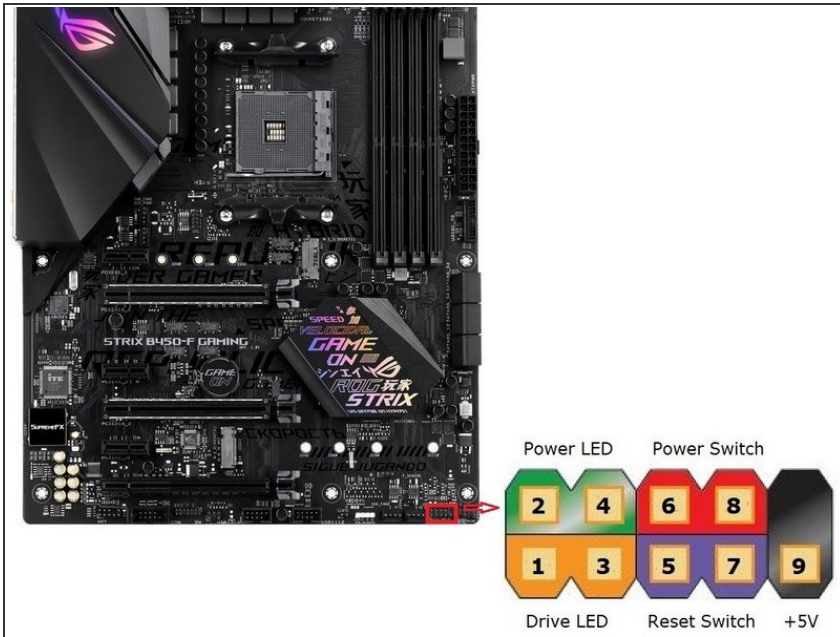
- Plug the Power Led + into the top left prong. Positive goes on the left prong.

Step 6



- Connect the Power Led - cable to the prong on the right.
- This is the final cable structure.

Step 7



- Power LED
- Power Switch
- Reset Switch

To reassemble your device, follow the instructions, steps 1 and 2, in reverse order.