



2005 Toyota Sequoia 2005 Liftgate Latch/Back Lock Sub-Assembly Replacement

How to replace a 2005 Toyota Sequoia 2005 Liftgate Latch/Back Lock Sub-Assembly.

Written By: Evan Jimenez



INTRODUCTION

This guide will show you how to replace the faulty liftgate latch/back lock sub-assembly and how to open a stuck trunk door for a 2005 Toyota Sequoia.

The Toyota Sequoia has a well-known fault that results in the trunk door remaining locked or unable to close properly. This can either make accessing the trunk more difficult or may potentially cause a hazardous situation where the trunk opens while driving. This is because the liftgate latch may have gotten jammed or cracked the fragile actuator motor it is attached to.



TOOLS:

- [Phillips #0 Screwdriver](#) (1)
- [Trim removal tool kit](#) (1)
- [Flashlight](#) (1)
- [Metal Spudger](#) (1)
- [10mm Socket](#) (1)
- [Socket Wrench](#) (1)



PARTS:

- [Toyota Sequoia Liftgate Latch](#) (1)

Liftgate Latch

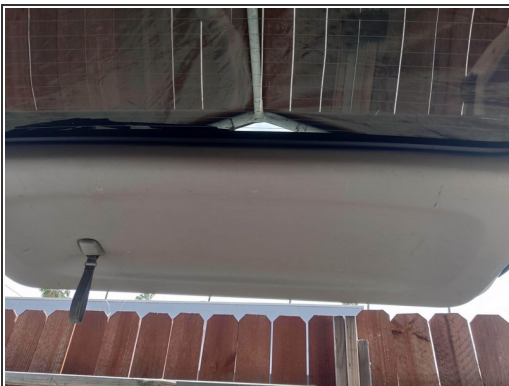
*Part #693010C010, Listed on Amazon.com
as Back Lock Sub-Assembly 69301-0C010*

Step 1 — Liftgate Latch/Back Lock Sub-Assembly



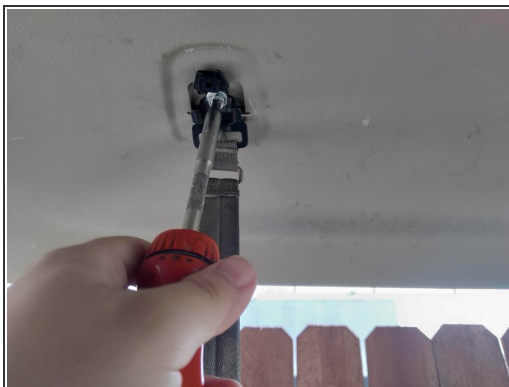
- Open the trunk door if you are able to do so.
- ⓘ Opening the trunk door will allow you to more easily remove the trim and access other components.
- ⓘ If you cannot open the trunk, ignore this step. The guide will show you later on how to open a stuck truck door.

Step 2



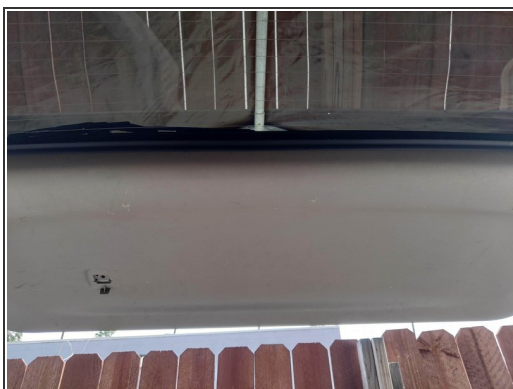
- Pull upwards on the plastic covering the trunk strap to remove it.

Step 3



- Using a Phillips screwdriver, remove the screw holding the trunk strap.

Step 4



- Use a plastic trim kit to start removing the trim on the trunk door.
- ⓘ You may have to use your hands and pull if you have difficulties removing the trim.

Step 5



- Use a 10 mm socket wrench or ratchet and remove the 8 screws located on the edge of the metal trunk cover.

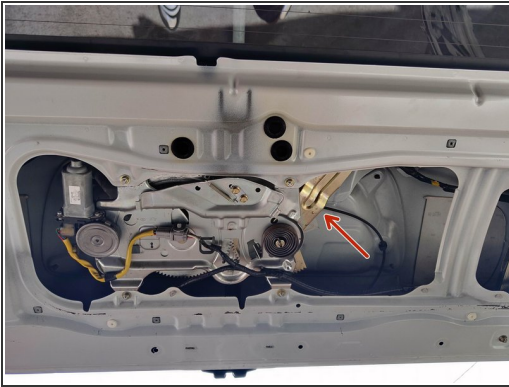
i Don't worry about the metal trunk cover falling off; there are plastic discs holding it in place.

Step 6



- Use a spudger to partially pry open the plastic discs holding the metal trunk cover and push the trunk cover off the discs.

Step 7



- Use a flashlight to follow the black cable that leads to a plastic covering which hides door latch cable.
- Use your fingers to pull down on the plastic covering and remove it.

Step 8



- Use your hand to pull the cable downwards to release the bottom half of the cable.
- Push the cable towards the metal ball and push downwards to release the cable fully.

Step 9



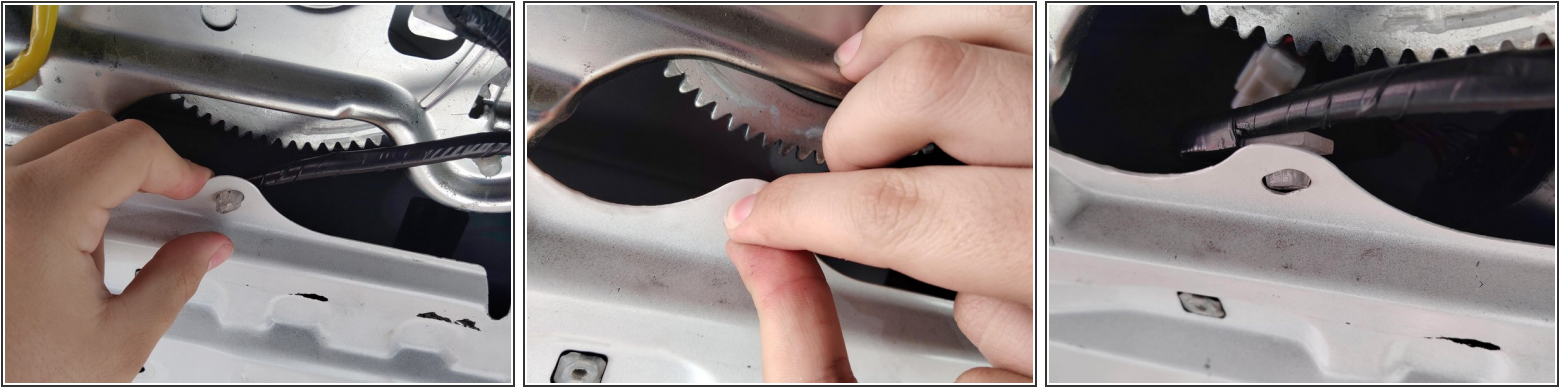
- Use a spudger to pry open the plastic holder and take the cable halfway out.
- ⓘ If you were unable to open the trunk door on the first step, you can now open it by pulling the metal ball on the black cable. This will open the trunk.

Step 10



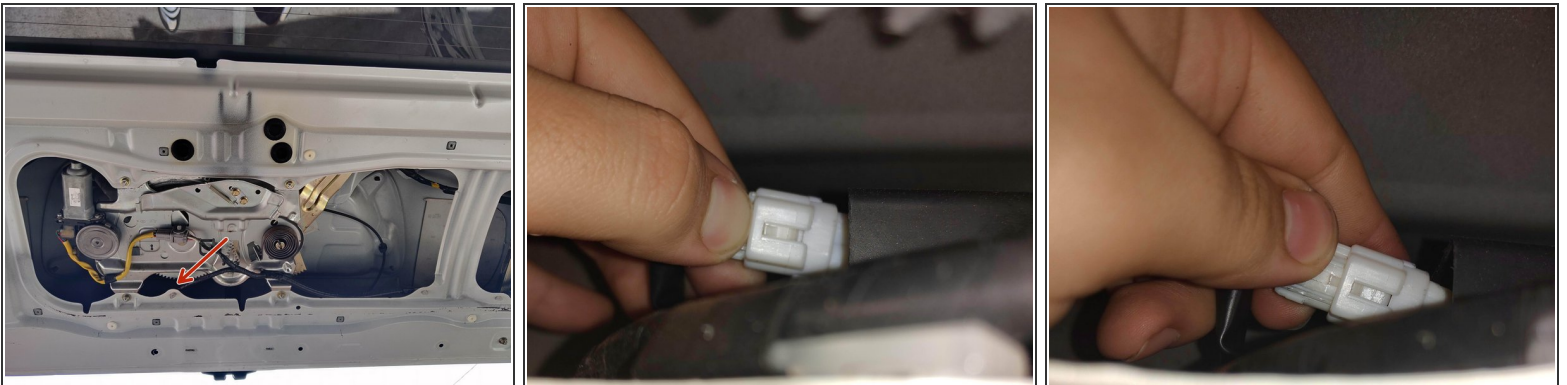
- Use a spudger to pry off the plastic covering the trunk latch.
- Use a 10mm socket wrench or ratchet to remove the three screws.
- Push upwards and in on the trunk latch.

Step 11



- Using your fingers or a spudger, squeeze both sides and push in.

Step 12



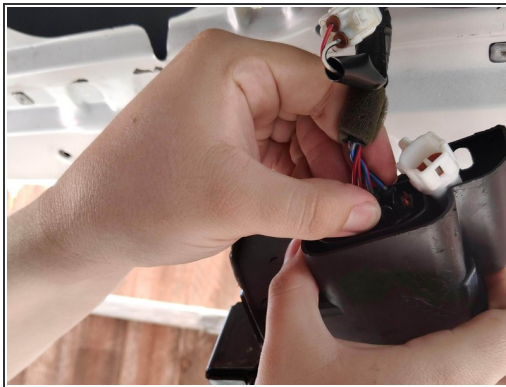
- Use a flashlight and your hands to squeeze to remove white plastic plug connected to the trunk latch.

Step 13



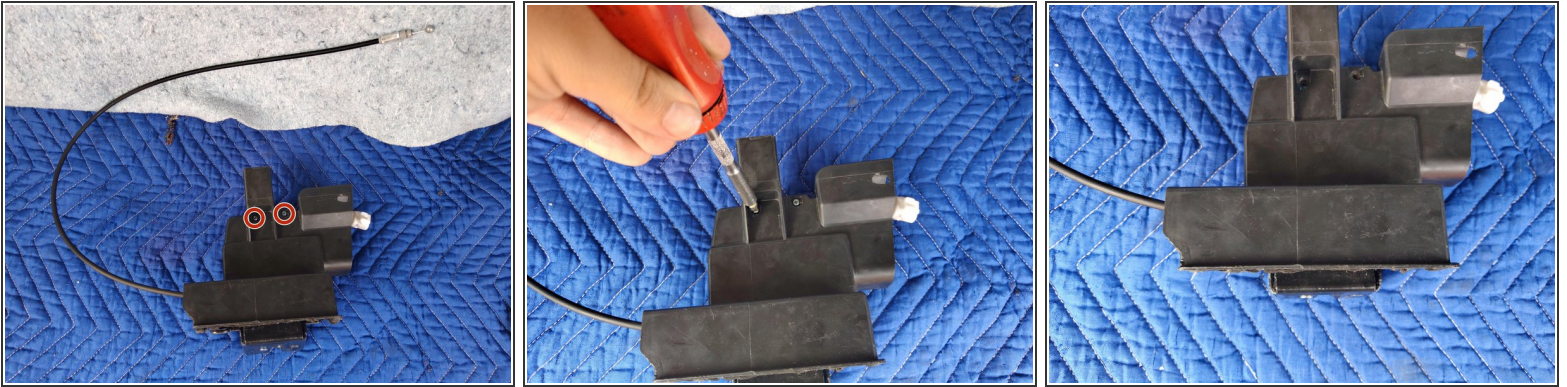
- Using your hands, slide the trunk latch to the right side of the trunk and remove.

Step 14



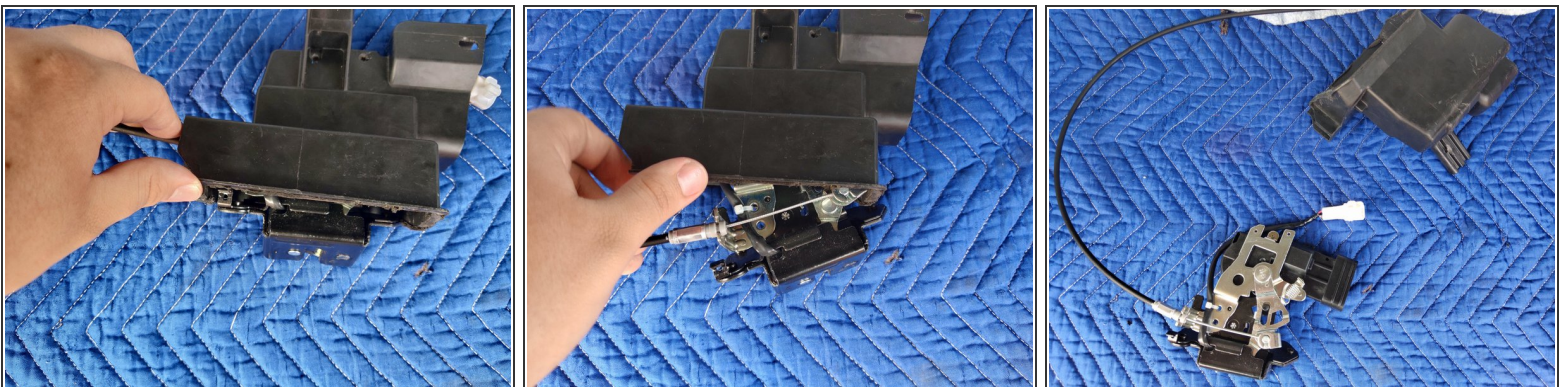
- Use a spudger or your hands to squeeze and remove the black plug.

Step 15



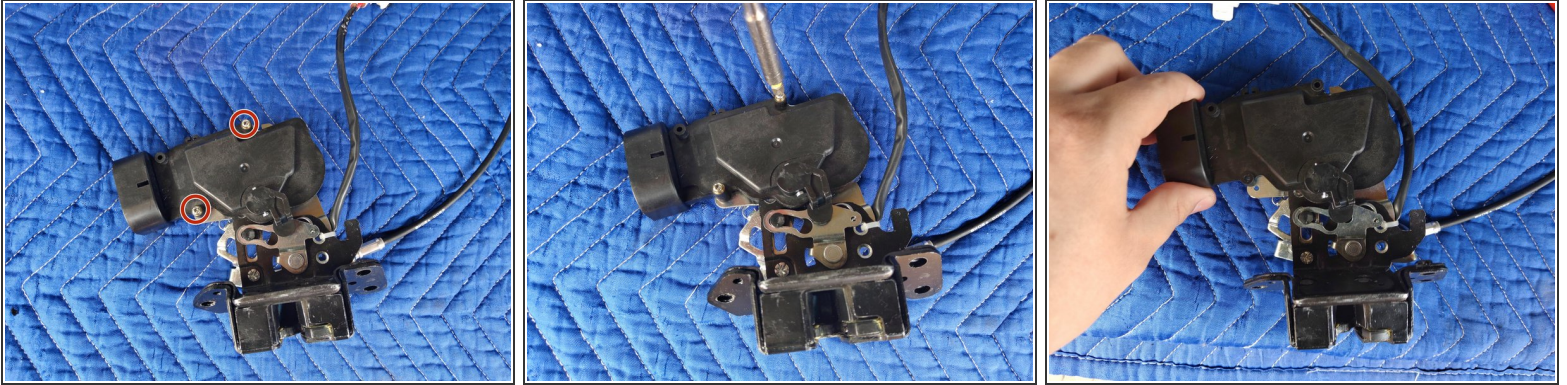
- Use a Phillips screwdriver to remove the two screws holding the plastic trunk latch cover.

Step 16



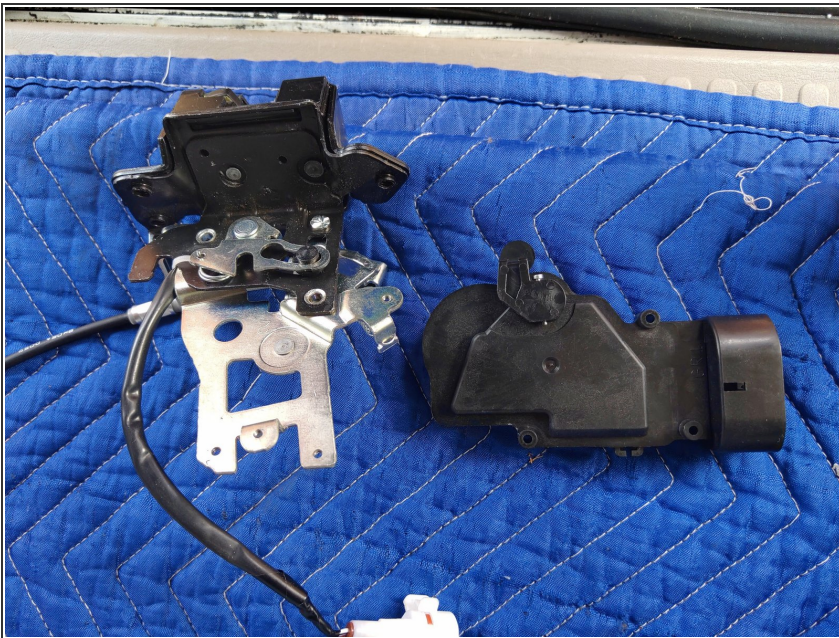
- Use your hands to pull downwards on the black cable to expose more of the trunk latch from the plastic covering.
- Remove the plastic covering by pulling it clockwise from the trunk latch.

Step 17



- Use a Phillips screwdriver to remove the two screws holding the actuator motor to the trunk latch.

Step 18



- You can now reuse or replace your old actuator motor and attach it to a new liftgate latch.

To reassemble your device, follow these instructions in reverse order.