



# Toshiba Satellite L45-S7423 LCD Display Replacement

This guide demonstrates to the user how to remove and install the LCD display for the Toshiba Satellite L45-S7423.

Written By: Stephen Sippel



---

## INTRODUCTION

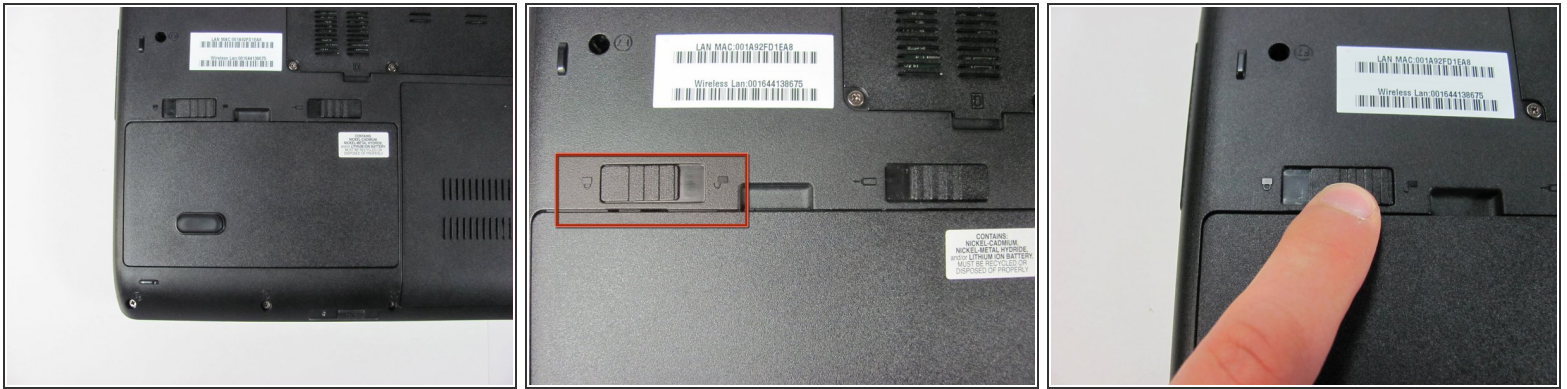
The LCD display can be easily separated from the laptop body to allow for replacement if it is damaged or functioning improperly.

---

### TOOLS:

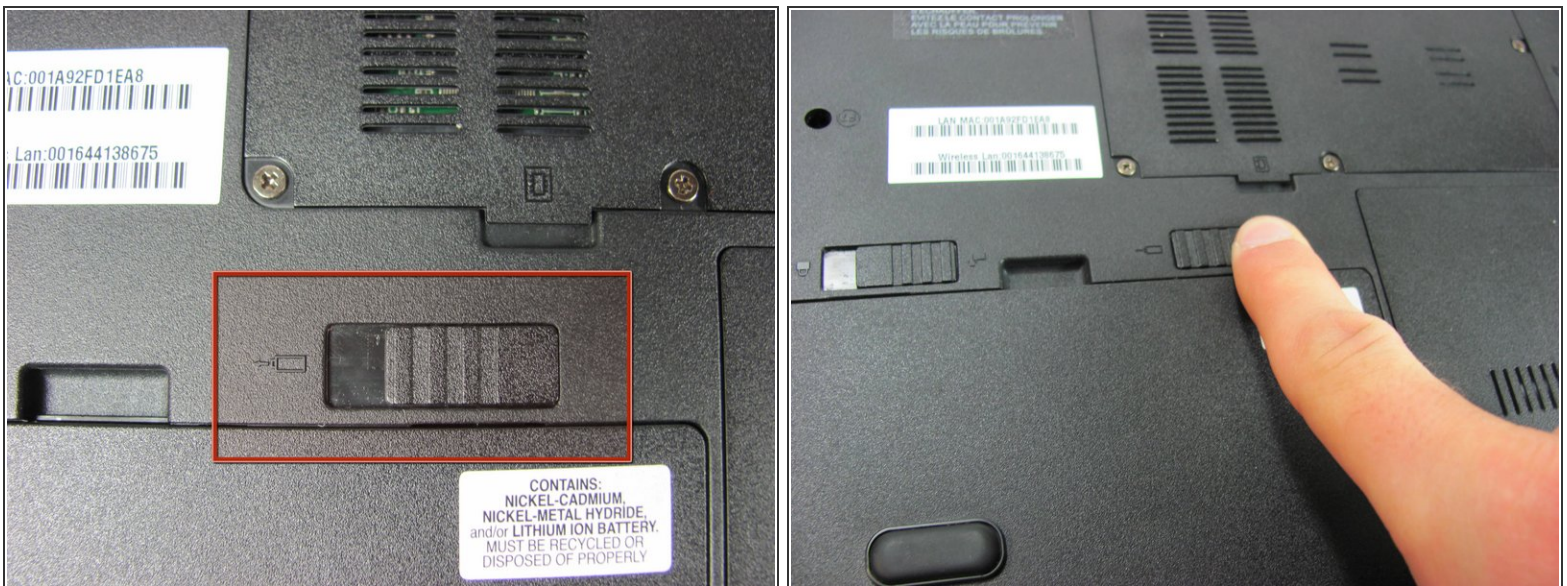
- [Phillips #00 Screwdriver](#) (1)
  - [Spudger](#) (1)
  - [iFixit Opening Tools](#) (1)
-

## Step 1 — Battery



- Make sure the battery lock switch is switched to the unlocked position.
- The battery is unlocked when the battery lock switch is slid to the side with an image of an unlocked lock.

## Step 2



- Slide the battery release switch to the left.
- ⓘ The switch is spring loaded, so you must hold the switch in place while removing the battery.

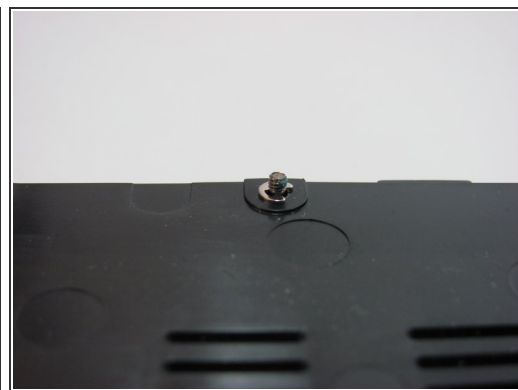
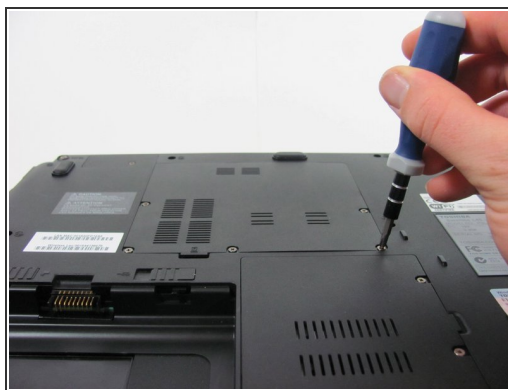
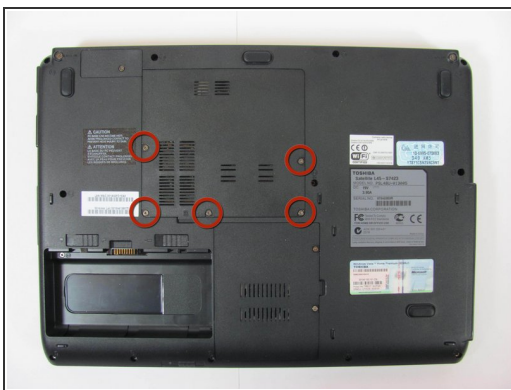


### Step 3



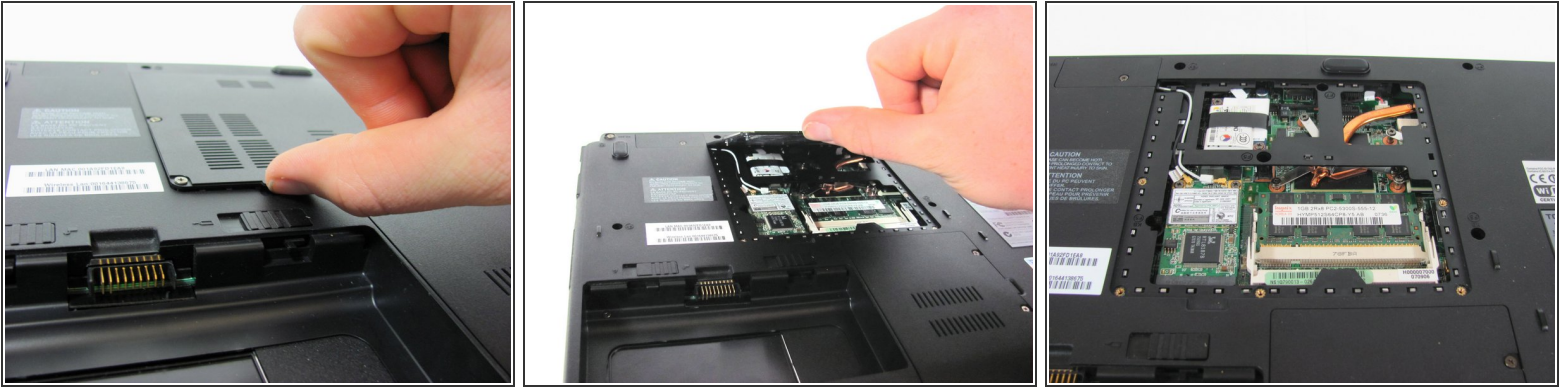
- Using a finger, lift up the battery.
- ☑ The battery release switch must be held in place.

### Step 4 — Bottom Access Panel



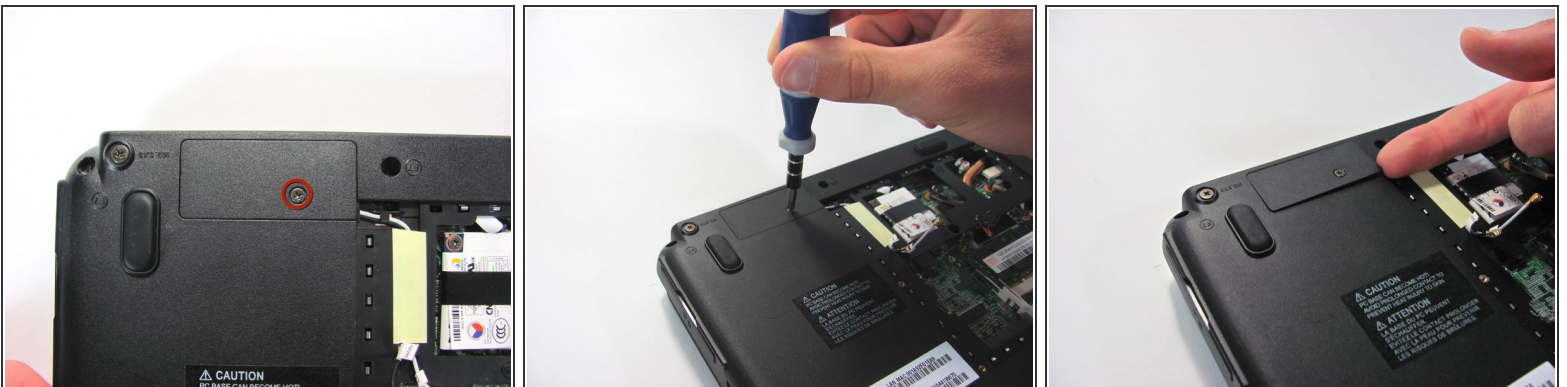
- Remove the 5 Phillips screws holding the panel in place.
- ⓘ These screws are permanently fastened to the panel; they are designed to be removed only partially to avoid loss.

## Step 5



- Use a finger to remove the panel by lifting up on the provided removal tab.

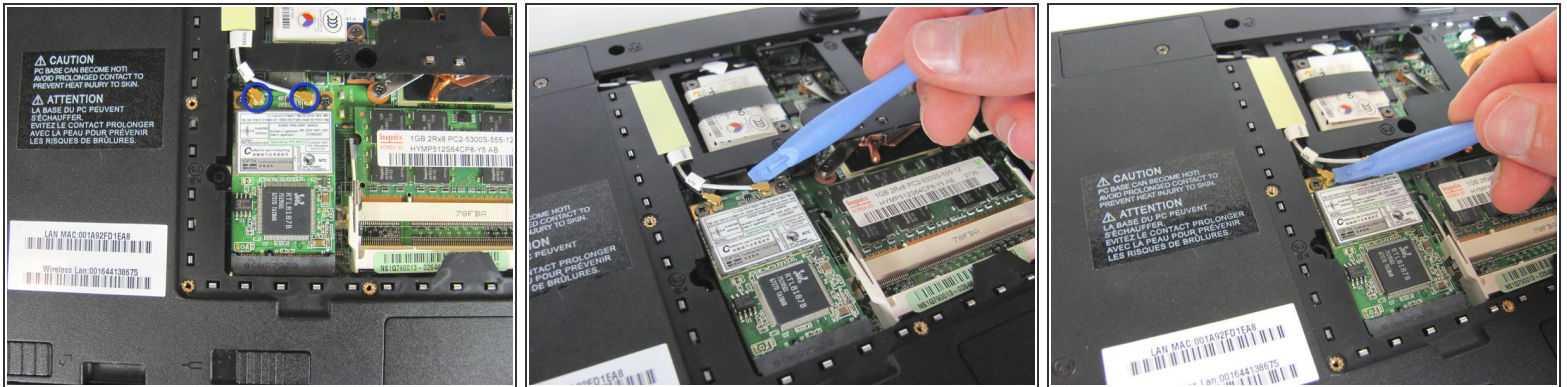
## Step 6 — LCD Display



- Remove the Phillips screw holding the panel in place and then use a finger to remove the panel.
- ⓘ This screw is not designed to be completely removed, it is permanently fastened to the panel to avoid loss.

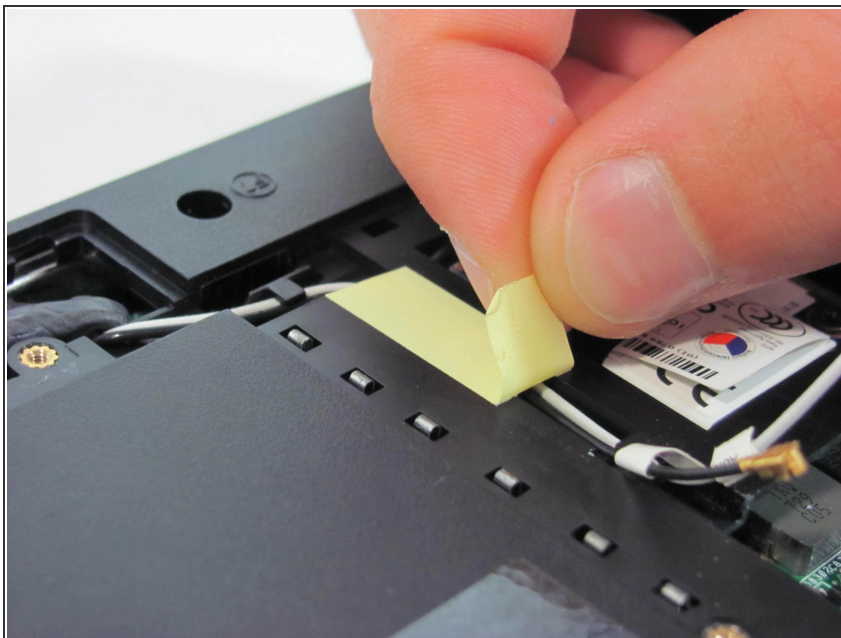


## Step 7



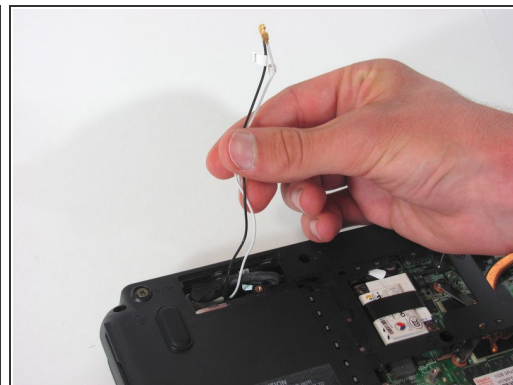
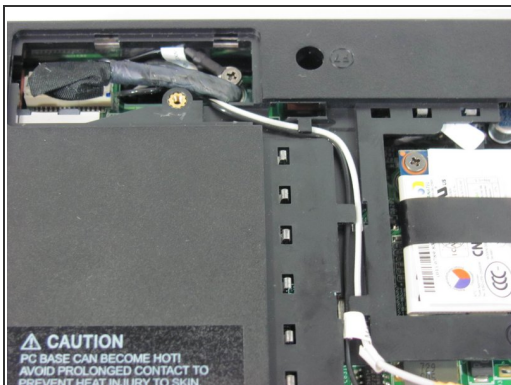
- With the aid of a plastic removal, disconnect the two wires attached to the wireless card.

## Step 8



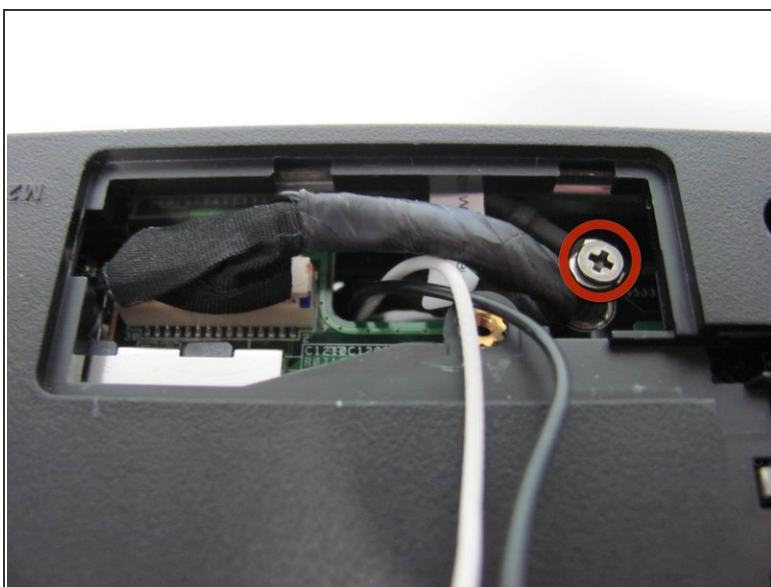
- Remove the yellow tape holding the black and the white wires in place.

## Step 9



- Unwind the wires from the plastic tabs holding the wires in place.

## Step 10



- Remove the screw holding the ground cable in place.
  - One 4.5 mm Phillips screw.



## Step 11




- Disconnect the video cable connecting the display to the base of the laptop.

## Step 12



- Pop off the laptop's hinge covers using a spudger tool.

 Only a small amount of force is required. Excessive force may permanently damage the hinge covers.



## Step 13



- Remove the two screws on the back side of the laptop holding the LCD display in place.
  - Two 8.5 mm Phillips screws.

## Step 14



- Remove the final two screws on the bottom side of the laptop holding the LCD display in place.
  - Two 8.5 mm Phillips screws.

## Step 15



- Carefully pull apart the LCD display from the base by pulling vertically upwards on the display.

⚠ Be careful as you remove the display not to pull too hard on the cables as they pass through the opening.

To reassemble your device, follow these instructions in reverse order.