



Datatronics Discovery 2400CM Teardown

This guide will show the teardown of a Datatronics Discovery 2400CM.

Written By: knipwim

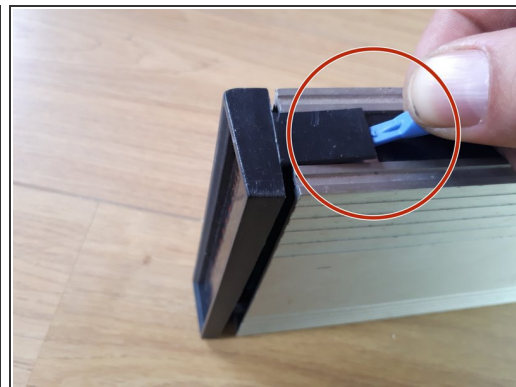
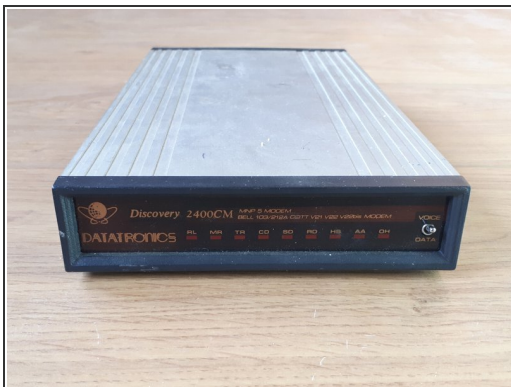




TOOLS:

- [Spudger](#) (1)
 - [Phillips #0 Screwdriver](#) (1)
-

Step 1 — remove front cover



i The front is attached to the body with 2 latches.

- Using the spudger, open a latch on one side.
- Open the latch on the other side next to detach the front.

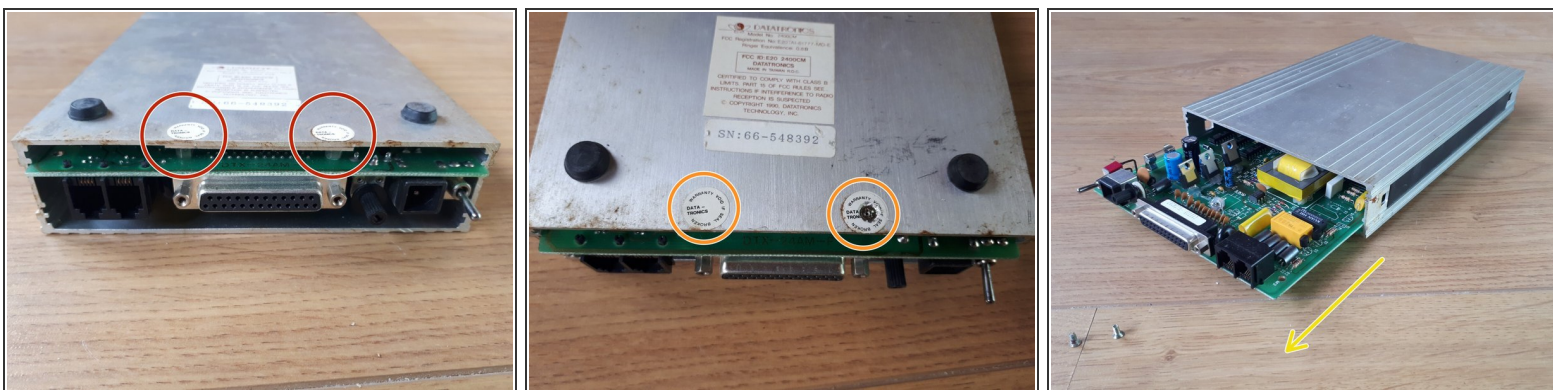
Step 2 — remove back cover



i The back cover is attached to the body the same way as the front.

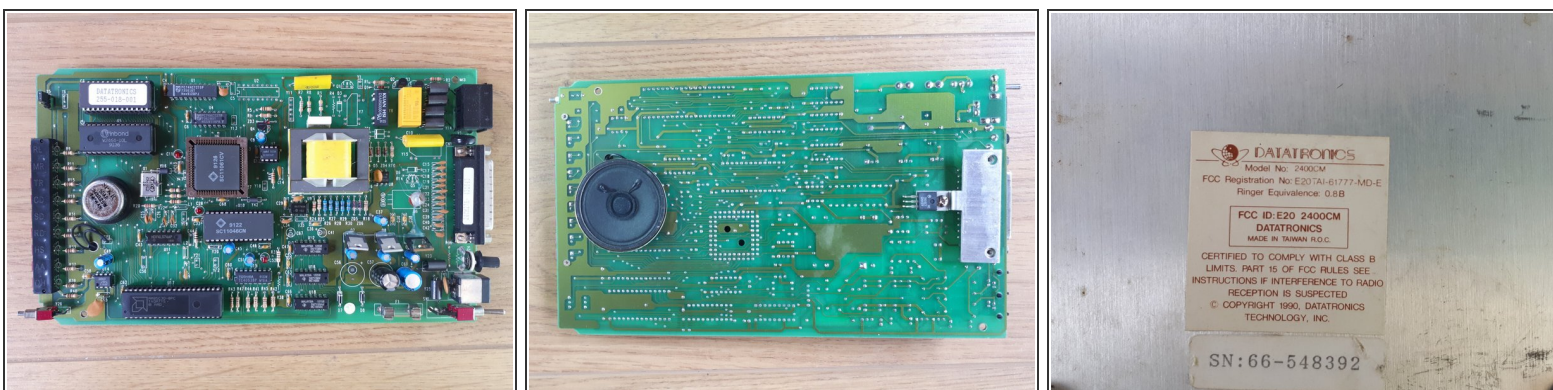
- Open both latches to detach to back cover.

Step 3 — remove board from housing



- The board is attached to the body with 2 screws. The screws are hidden under "warranty avoidance" stickers.
- Remove the stickers so you can unscrew the screws.
- Slide the board from the body.

Step 4 — overview



- ① Overview of the front and back of the board, as well as a detailed view of the label.