



Updating/recovering the firmware of the Xbox One Wireless Controller (Model 1708) on PC

How to update the firmware of a Model 1708 Xbox One Wireless Controller with a computer.

Written By: SojerManLan



INTRODUCTION

While using the controller with a PC or a console, sometimes there may be erroneous issues without visible causes of failure. In some cases, this may be correctable with a firmware update.

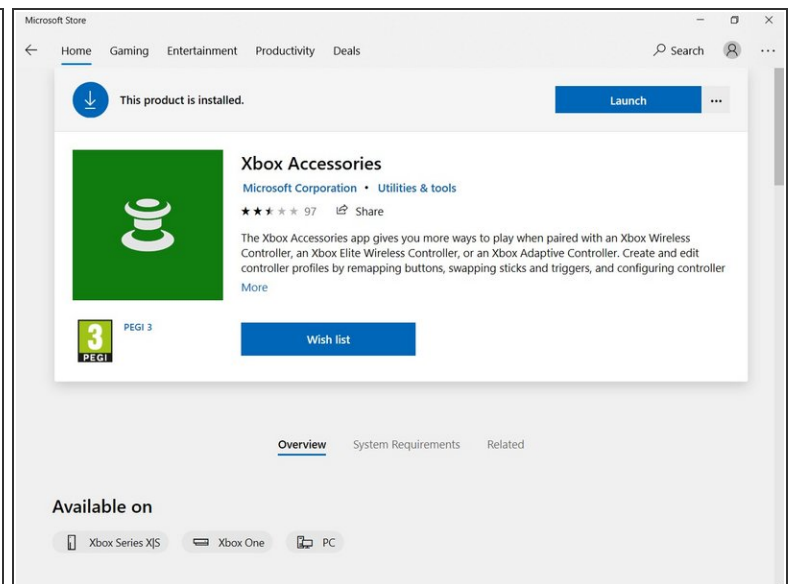
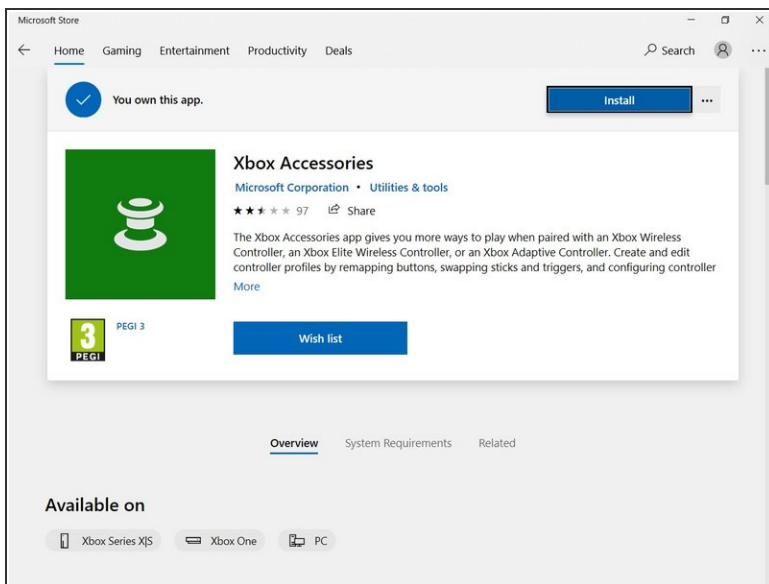
Note: A firmware update is also required to use the controller with a Xbox Series S/X console. Windows 10 is required to complete this guide.

Step 1 — Plug the controller in



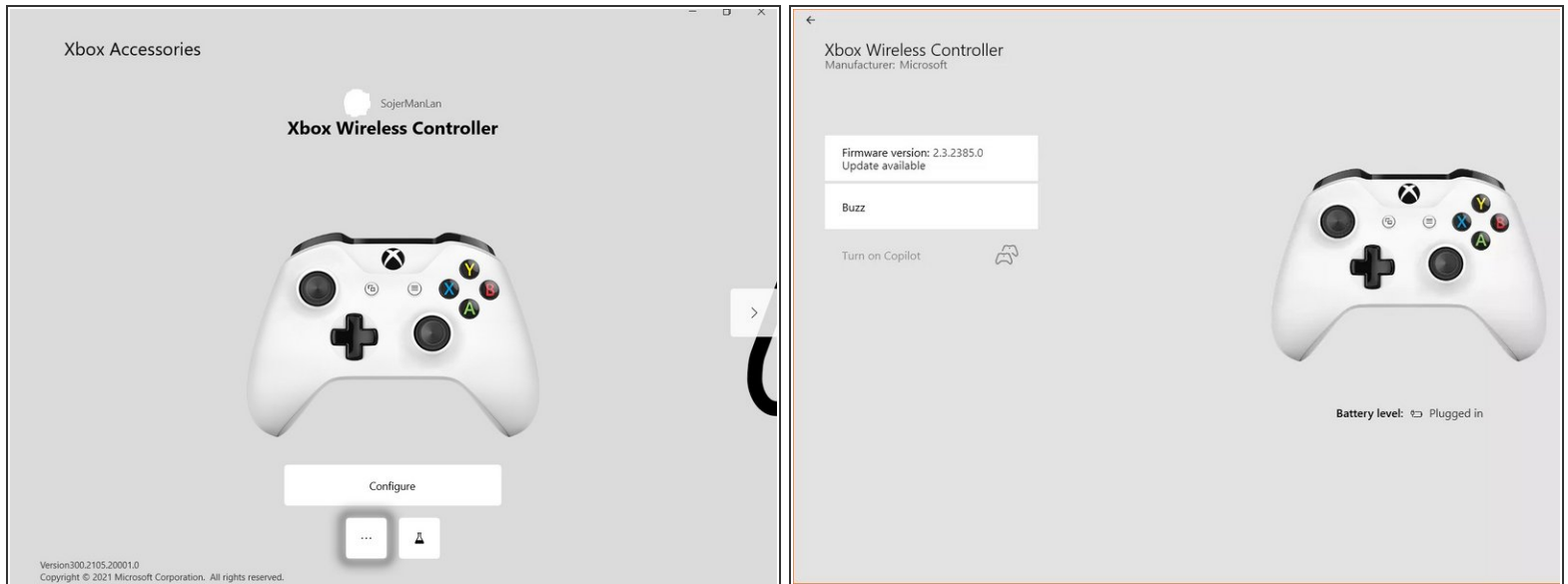
- Connect the controller using a microUSB cable and plug it into one of your PC's USB ports.
- Bluetooth firmware updates are **not supported**.

Step 2 — Download the Xbox Accessories app.



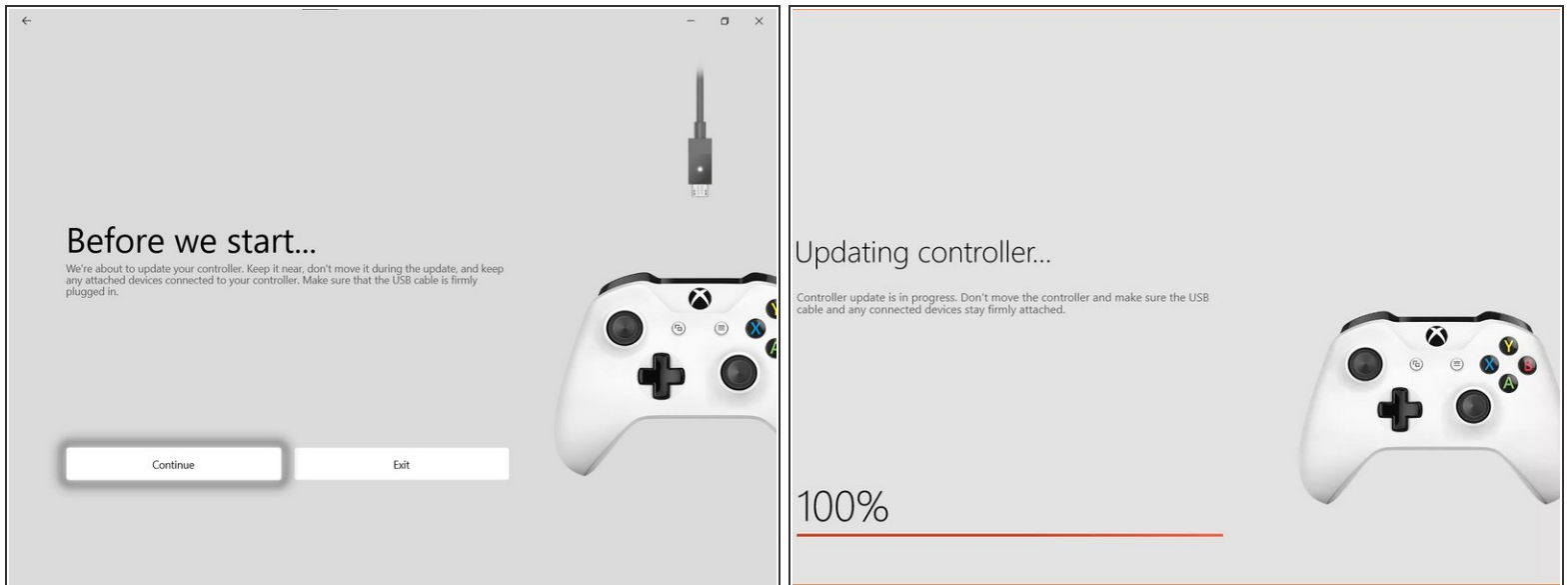
- Download the Xbox Accessories app from Microsoft Store [using this link](#).
- After it has finished downloading, you can launch it either straight off the app's page or from your Start Menu.

Step 3 — Prepare the app for the firmware update



- After you launch the app and it finishes loading, the controller should show up like on the first photo.
- Click on the three dots under the *Configure* button.
- ⓘ If the button over the *Buzz/Vibrate this controller* says **No update available**, your controller is already up to date and the guide ends here.

Step 4 — Update the firmware



- Press the *Continue* button and wait for the process to finish.

⚠ In most cases, the firmware can be recovered, but be careful **not** to disconnect the controller during the update. Any loss of connection, be it disconnecting or PC power loss may damage the controller beyond repair.

- After the update, press *Close*. Your controller is now up to date and should be fully usable with your PC, Xbox One or Series S/X consoles.