



# How to Replace a Gigabyte GeForce RTX 2060 Graphics Card

How to Replace a Gigabyte GeForce RTX 2060 Graphics Card.

Written By: Amirali Rahimian



## INTRODUCTION

The following replacement guide explains how to replace your Gigabyte Geforce RTX 2060 graphics card with any other GPU of your choice.

Every computer needs a graphics card to properly function. The graphics card is what is used to render the things you see on screen, so whether your current GPU is defective/damaged or even outdated, this guide will help you get your computer working properly again.

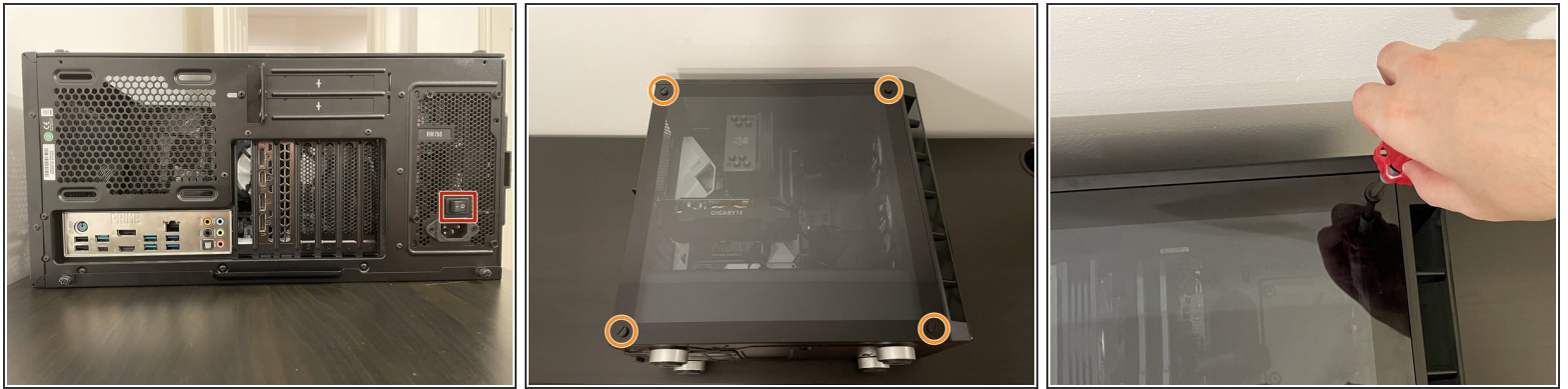
Prior to beginning the guide, be sure to power down your device and disconnect from the power chord. Additionally, work on a hard surface and avoid working on a carpeted area.



### TOOLS:

- [Phillips #0 Screwdriver](#) (1)
  - [Anti-Static Wrist Strap](#) (1)
-

## Step 1 — Graphics Card



- Shut down and unplug everything from the back of your PC.
  - Flip the power supply switch so that it is OFF.
  - Take off the side panel by removing the screws that lock it in place.
- i** Your side panel screws will most likely be in different locations than the screws in the picture, depending on your PC case.
- ⚠** Before proceeding, make sure to ground yourself by touching any metal part of the PC case. This releases any built up static charge that could permanently damage your internal parts.

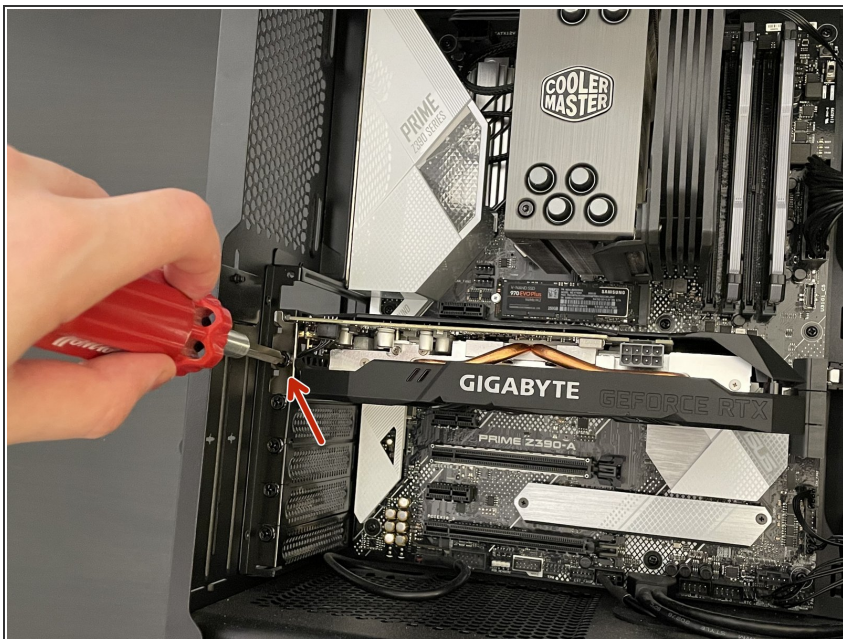


## Step 2



- Push down on the lock clip located on the PCIe cable.
- Unplug the PCIe cable by gently pulling it out.

## Step 3



- Remove the small Phillips #0 mounting screw(s) that connect the GPU onto the back of the PC case.
- ⓘ Keep the small screw(s) in a safe place where they can not be lost.

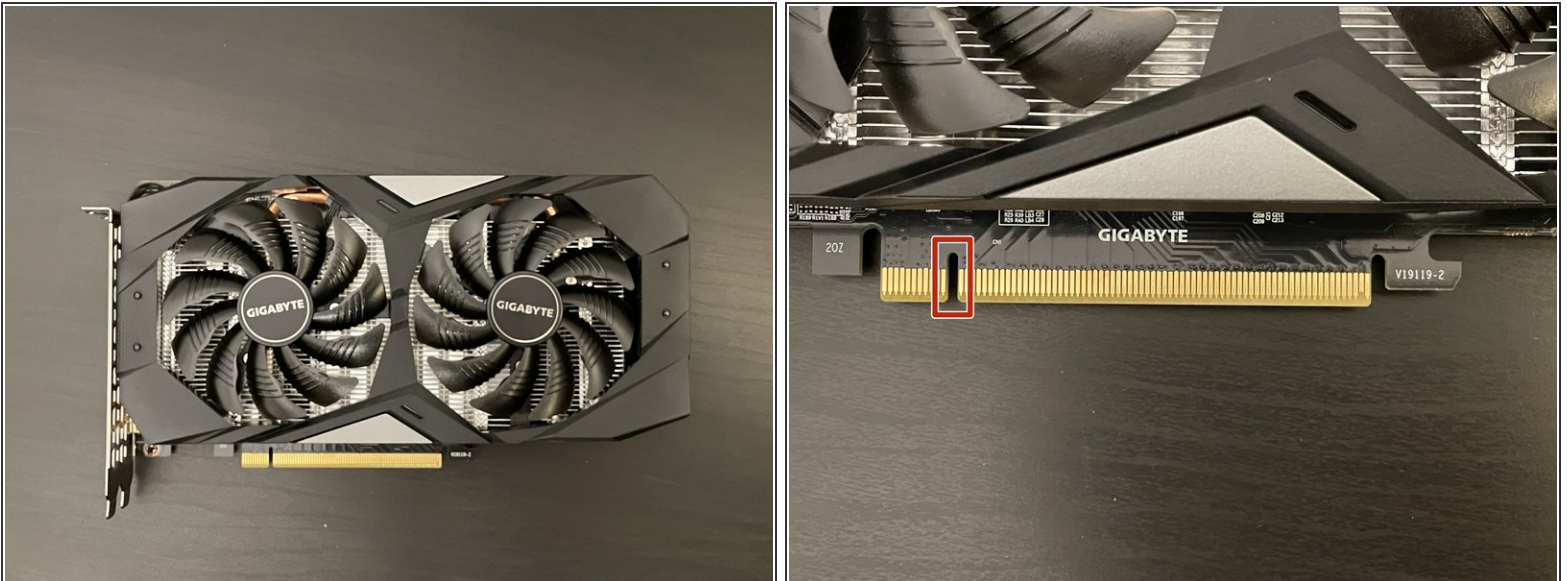


## Step 4



- Push down on the lock tab located beside the GPU slot on the motherboard.
- Remove the graphics card by gently pulling it out from the GPU slot. Use both hands for extra caution.
- ⓘ The screwdriver was only used to point at lock tab since it can sometimes be hard to spot.

## Step 5



- Take your new graphics card and carefully line it up with the GPU slot on the motherboard.
- ⓘ Keep in mind where the gap in the gold pins is located.

## Step 6



- Once it is perfectly lined up, gently push the graphics card into the slot until a click is heard.

To reassemble your device, follow steps 1-3 in reverse order.