



# Samsung Galaxy Note SD Card Replacement

This guide shows you how to replace your phone's SD card.

Written By: David Ritter



---

## INTRODUCTION

The SD card holds your phone's external memory. Replace or remove the SD card if you want to change how your phone deals with memory storage. Check the device's [troubleshooting page](#) if you think your SD card is malfunctioning.



### TOOLS:

- [Phillips #00 Screwdriver](#) (1)
  - [Spudger](#) (1)
-

## Step 1 — Battery



- Make sure the screen is face-down and the camera is opposite you.
- Insert the flat end of a spudger into the phone's top right rectangular slot.
- Use the spudger as a lever to pry open the back of the phone.

## Step 2



- With the spudger still inserted, carefully slide the spudger down the side of the phone.
- Gently peel off the back cover with your hand.

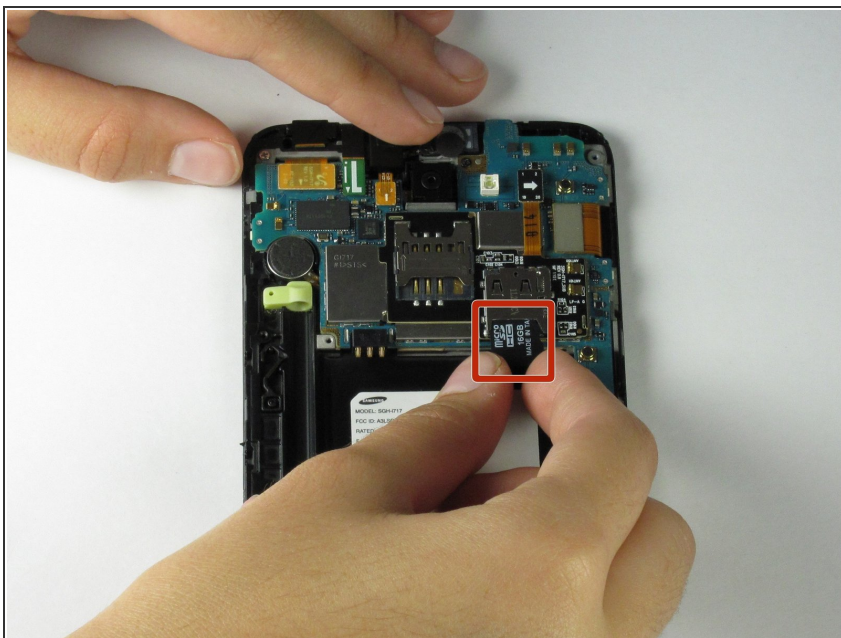


### Step 3



- Place the spudger in the battery's bottom right slot.
- Gently pry to remove the battery.

### Step 4 — SD Card



- Pull out the micro SD card located in the upper right slot (above the battery).

To reassemble your device, follow these instructions in reverse order.