



# Samsung Galaxy A70 Battery Replacement

Use this guide to replace a worn-out or dead...

Written By: Adriana Zwink



# INTRODUCTION

Use this guide to replace a worn-out or dead battery in your Galaxy A70.

If your battery is swollen, [take appropriate precautions](#). For your safety, **discharge your battery below 25%** before disassembling your phone. This reduces the risk of a dangerous thermal event if the battery is accidentally damaged during the repair.

You'll need replacement adhesive to reattach components when reassembling the device.



## TOOLS:

[SIM Card Eject Tool](#) (1)  
[iFixit Opening Picks \(Set of 6\)](#) (1)  
[iOpener](#) (1)  
[Spudger](#) (1)  
[Plastic Cards](#) (1)



## PARTS:

[Tesa 61395 Tape](#) (1)  
[iFixit Adhesive Remover](#) (1)

---

## Step 1 — Eject the SIM tray



- Insert a SIM card eject tool, a SIM eject bit, or a straightened paper clip into the hole on the SIM tray located at the left edge of the phone.
- Press firmly to eject the tray and remove it.

## Step 2 — Soften the adhesive



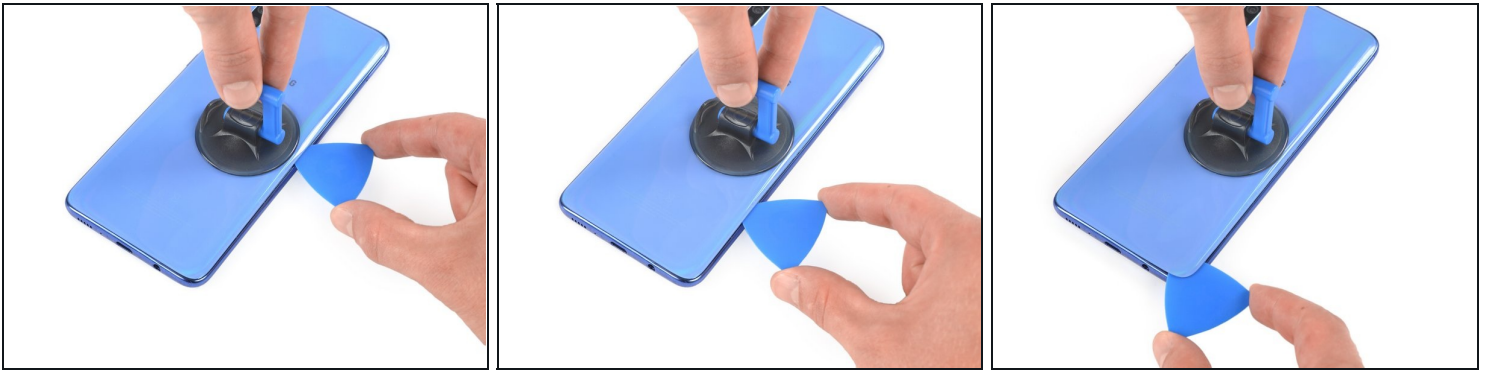
- Switch off your Galaxy A70.
- [Heat an iOpener](#) and use it to soften the adhesive beneath the back cover. Apply the iOpener for at least two minutes. You might want to repeat this step several times during the back cover removal.
- ① A hair dryer, heat gun, or hot plate may also be used, but be careful not to overheat the phone—the AMOLED display and internal battery are both susceptible to heat damage.

## Step 3 — Create a gap



- Apply a suction cup to the back of the phone, as close as possible to the center of the right edge.
- Pull on the suction cup to create a gap between the back cover and the frame.
- Insert an opening pick into the gap.

## Step 4 — Slice the adhesive



- Slide the opening pick along the edge to the bottom right corner.
- Leave the opening pick in its place to prevent the adhesive from resealing.
- ① Once you have inserted an opening pick, feel free to remove the suction cup or continue to use it for a better grip during the removal procedure.

## Step 5



- Insert a second opening pick underneath the bottom right corner of the back cover.
- Slide the opening pick along the edge to the top right corner.
- ① If you have trouble with cutting, you can use the [iOpener](#) again to soften the adhesive.
- Leave the opening picks in place to prevent the adhesive from resealing.



## Step 6



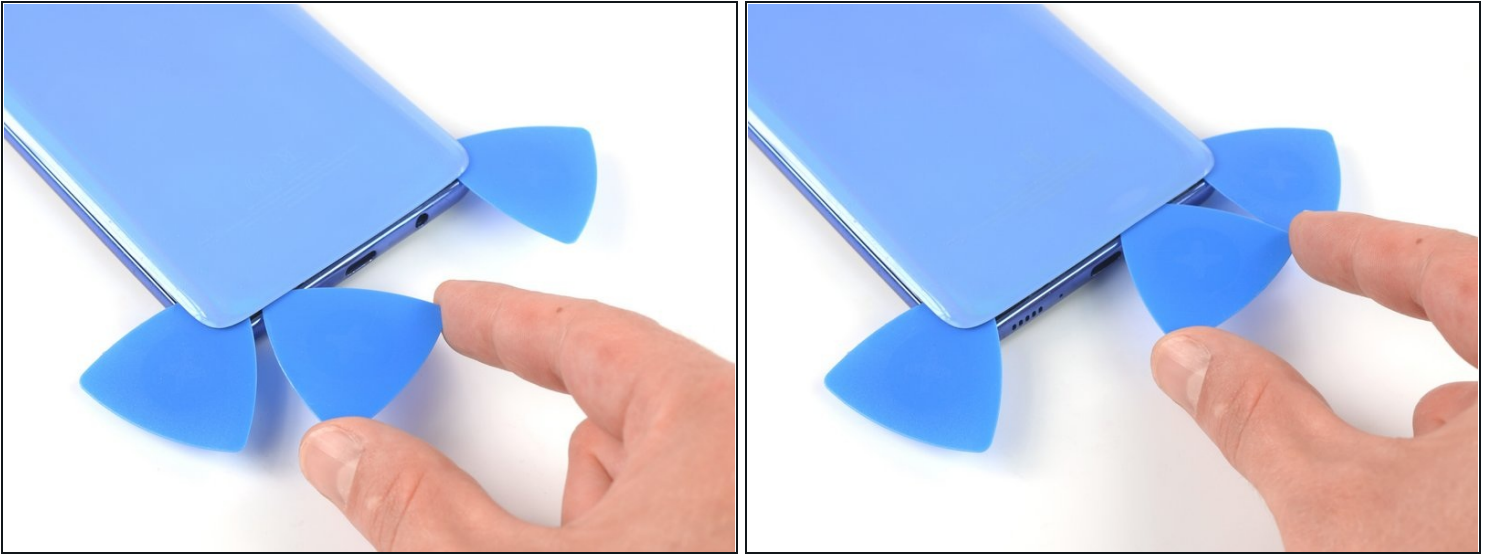
- Insert a third opening pick underneath the top right corner of the back cover.
- Slide the tip of the opening pick along the top edge of the phone to cut the adhesive.
- Leave the opening pick in the top left corner to prevent the adhesive from resealing.

## Step 7



- Insert a fourth opening pick underneath the top left corner.
- Slide the opening pick along the left edge of your phone to cut the adhesive.
- Leave the opening pick in its place to prevent the adhesive from resealing.

## Step 8



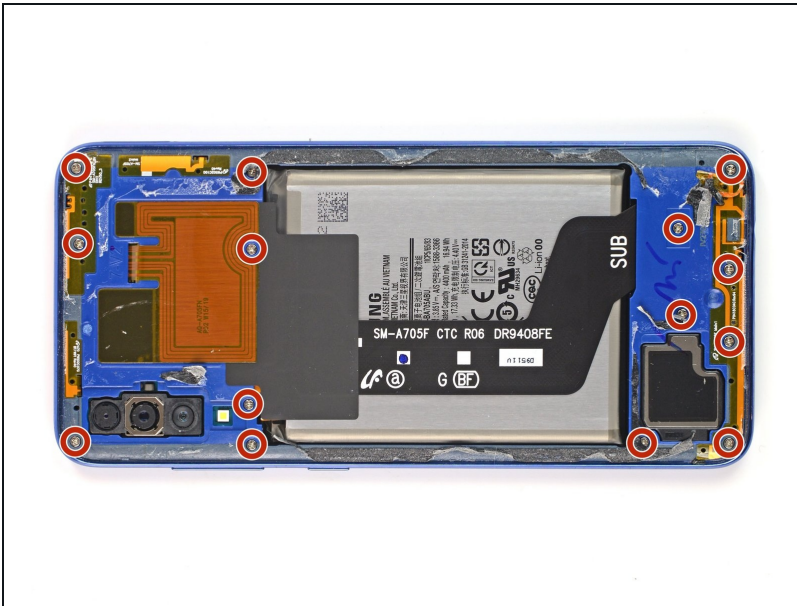
- Insert a fifth opening pick underneath the bottom left corner.
- Slide it along the the bottom edge to cut the remaining adhesive.

## Step 9 — Remove the back cover



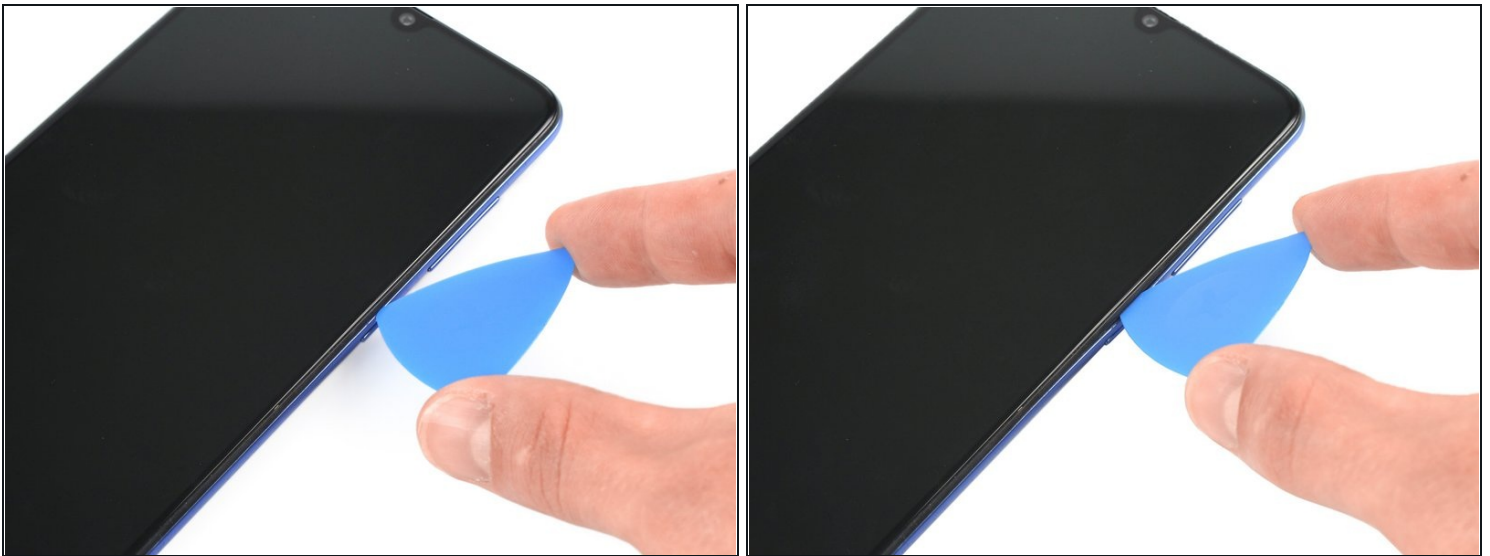
- Remove the back cover.
- ☑ After installing the back cover, apply strong, steady pressure to your phone for several minutes to help the adhesive form a good bond — a stack of heavy books works well.

## Step 10 — Unscrew the midframe



- Use a Phillips screwdriver to remove the fourteen 4.0 mm-long screws that secure the midframe.

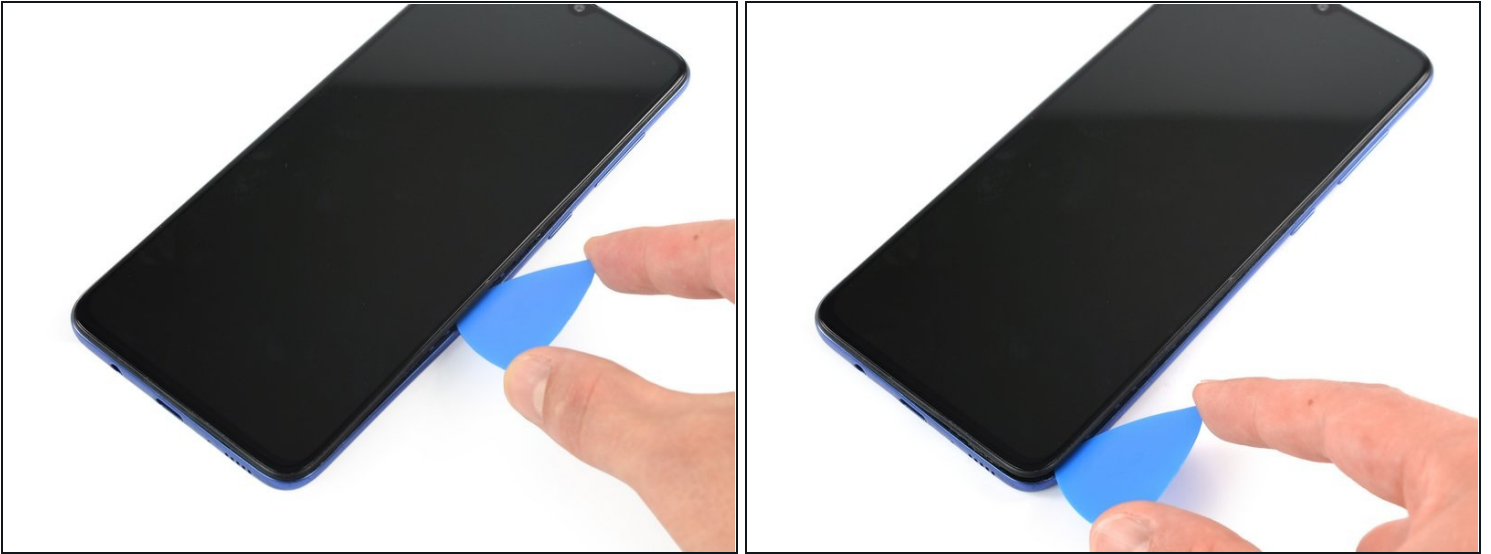
## Step 11 — Insert an opening pick



**i** The midframe is held in place by plastic clips.

- Insert an opening pick between the midframe and front panel assembly on the right edge of the phone near the volume button.

## Step 12 — Detach the plastic clips



- Slide the opening pick to the bottom right corner to detach the plastic clips.

## Step 13



- Continue sliding the opening around the bottom right corner to the bottom left corner to detach the plastic clips.



## Step 14



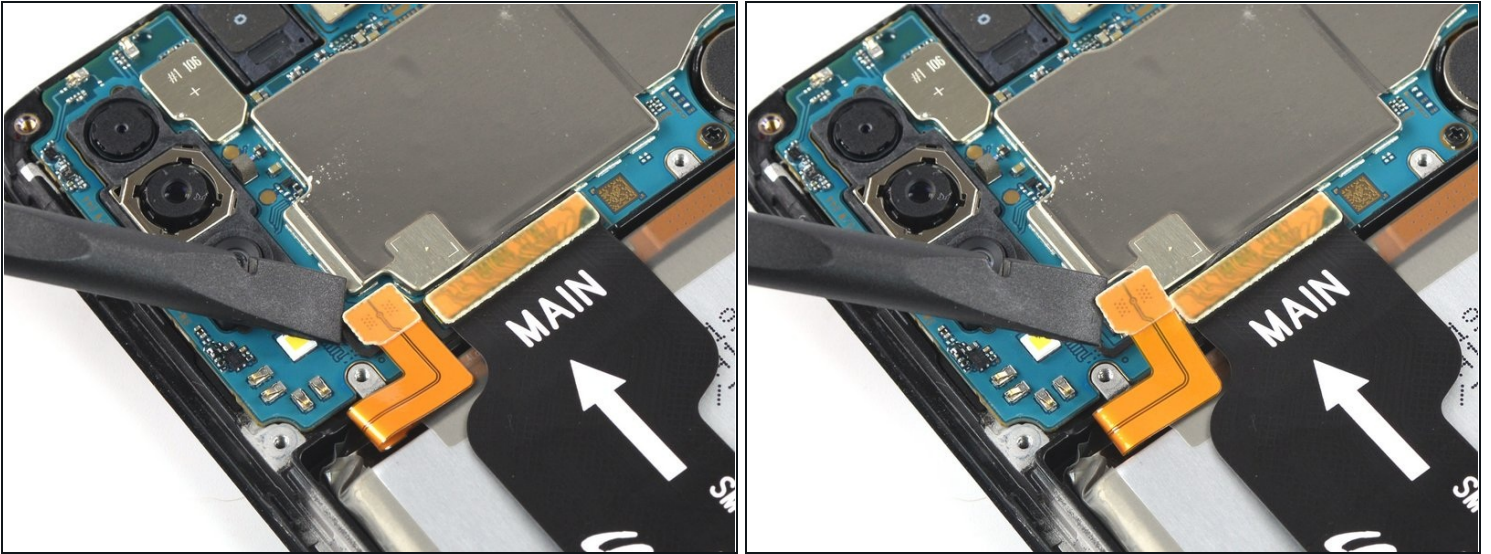
- Slide the opening pick along the left edge to detach the plastic clips.

## Step 15 — Remove the midframe



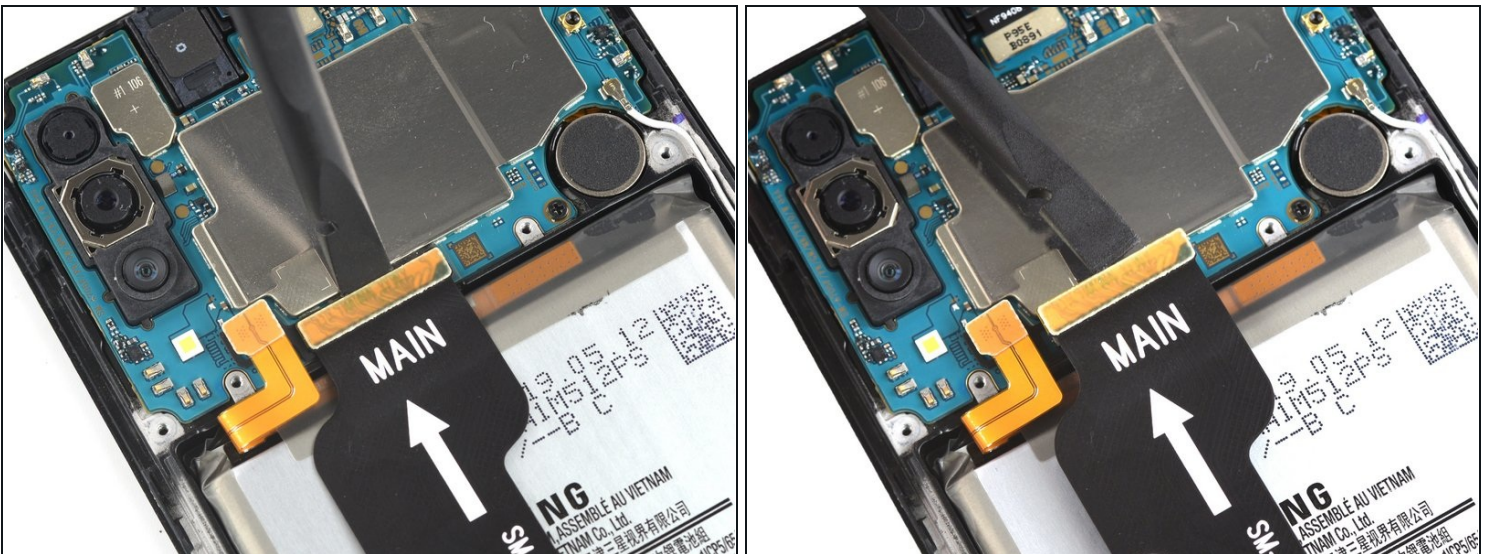
- Remove the midframe.

## Step 16 — Disconnect the battery



- Use a spudger to disconnect the battery by prying the connector straight up from its socket.

## Step 17 — Disconnect the interconnect cable



- Use a spudger to disconnect the interconnect cable from the motherboard by prying the connector straight up from its socket.

## Step 18 — Disconnect the interconnect cable



- Use a spudger to disconnect the interconnect cable from the daughterboard by prying the connector straight up from its socket.
- Remove the interconnect cable

## Step 19 — Apply adhesive remover



**⚠** Follow these [preparation steps](#) before using adhesive remover.

- Apply a few drops of adhesive remover or high-concentration (90% or higher) isopropyl alcohol into the gap at the bottom edge of the battery.
- Lift the bottom of your phone up to tilt it in the direction of the rear facing camera to let the adhesive remover spread out underneath the battery.
- Let the adhesive remover penetrate the battery adhesive for at least 1 minute.



## Step 20 — Pry up the battery



**⚠ Try your best not to deform the battery during this process. Soft-shell lithium-ion batteries can leak dangerous chemicals, catch fire, or even explode if damaged. Do not use excessive force or pry at the battery with metal tools.**

- Insert a [plastic card](#) underneath the bottom edge of the battery.
  - Carefully slide it underneath the battery to loosen the adhesive.
  - Continue sliding the plastic card underneath to pry up the battery from its recess.
- i** The battery should come off easily. In case the battery is still sticky, repeat the previous adhesive remover procedure.

## Step 21 — Remove the battery



- Remove the battery.

**⚠ Do not reinstall a damaged or deformed battery, as doing so is a potential safety hazard.**

- ☒ Before installing a new battery, remove any remaining adhesive from the phone, and clean the glued areas with isopropyl alcohol and a lint-free cloth.



---

If possible, turn on your device and test your repair before installing new adhesive and resealing.

Secure the new battery with pre-cut adhesive or double-sided adhesive tape. In order to position it correctly, apply the new adhesive into the device at the places where the old adhesive was located, not directly onto the battery. Press the new battery firmly into place.

To reassemble your device, follow these instructions in reverse order. Apply new adhesive where necessary after cleaning the relevant areas with isopropyl alcohol (>90%).

For optimal performance, **calibrate your newly installed battery**: Charge it to 100% and keep charging it for at least 2 more hours. Then use your device until it shuts off due to low battery. Finally, charge it uninterrupted to 100%.

Take your e-waste to an [R2 or e-Stewards certified recycler](#).

Repair didn't go as planned? Try some [basic troubleshooting](#), or ask our [Answers community](#) for help.