



Microsoft Surface Laptop 3 13.5" Feet Replacement

Follow this guide to remove or replace the feet...

Written By: Carsten Frauenheim



INTRODUCTION

Follow this guide to remove or replace the feet on the bottom of a Microsoft Surface Laptop 3 (13.5").

Microsoft offers replacement feet for the Surface Laptop 3. Please see [this support article](#) for more details on how to order them.

Some photos in this guide are from a different model and may contain slight visual discrepancies, but they won't affect the guide procedure.

TOOLS:

[Spudger](#) (1)

PARTS:

[Surface Laptop 3/4/5 Feet - Genuine](#) (1)

Step 1 — Flip the laptop over



- Flip the laptop over and place it on your work surface, feet facing up.

Step 2 — Removal tip



- ① The feet on the bottom of the laptop are meant to be removed with the pointed end of a spudger.
 - Each foot has a hidden indent that will simplify removal.
 - To make sure the spudger is in the indent, insert it at the nearest **long edge**, pushing parallel to the short edges of the laptop, as shown.
- ① Note that the two feet near the rear (screen) edge are different than the two front feet.

Step 3 — Remove the rear feet



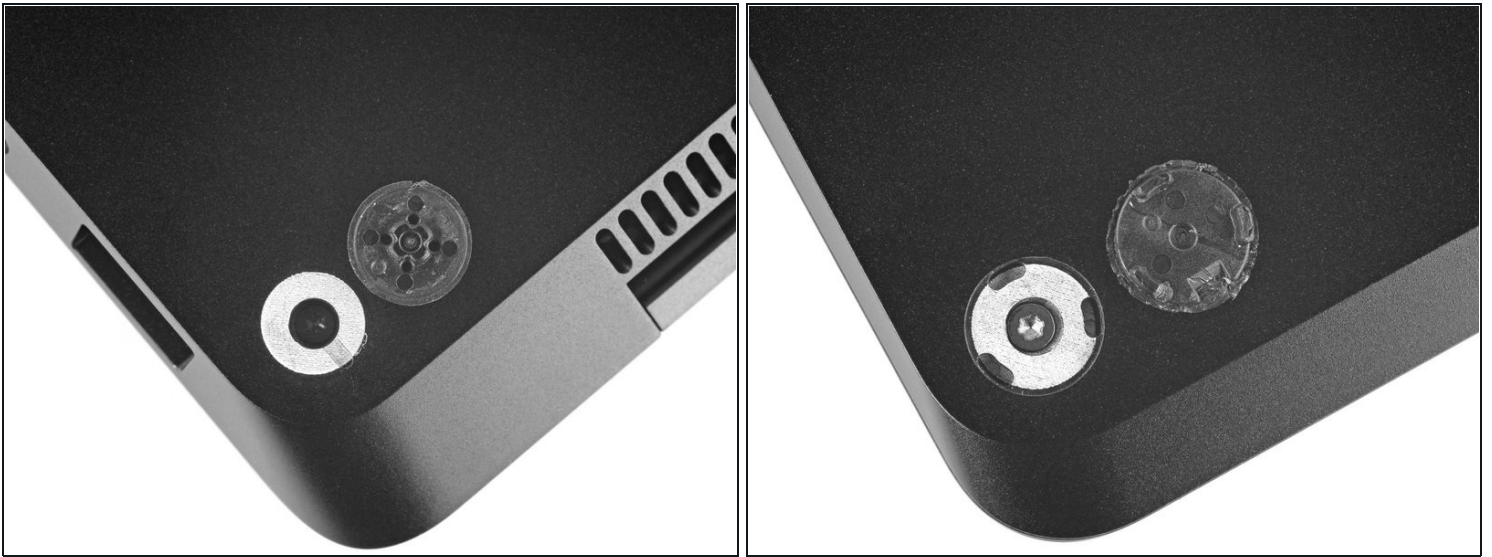
- Insert the pointed end of a spudger underneath one of the two rear feet, at its rear edge.
- Push the spudger underneath the foot and pry up to release it.
 - ❗ The two rear feet are secured with some light adhesive.
- Repeat to remove the second rear foot.

Step 4 — Remove the front feet



- Insert the pointed end of a spudger underneath one of the two front feet, at its front edge.
- Push the spudger underneath the foot and pry up to release it.
 - ❗ The two front feet are secured with plastic clips as well as light adhesive.
- Repeat to remove the second front foot.

Step 5 — Reassembly tip



★ During reassembly:

- Note that the front and rear feet are different.
- Note that the front feet are directional and only clip in one way.

Step 6 — Reassembly tip



★ In place of reusing old, worn out feet on your device, 8 mm rubber furniture pads can be a good substitute.

- Peel a pad away from its backing, align it over a foot cavity, and press to secure.

Compare your new replacement part to the original part—you may need to transfer remaining components or remove adhesive backings from the new part before installing.

To reassemble your device, follow the above steps in reverse order.

Take your e-waste to an [R2 or e-Stewards certified recycler](#).

Repair didn't go as planned? Try some basic [troubleshooting](#) or search our [Answers community](#) for help.