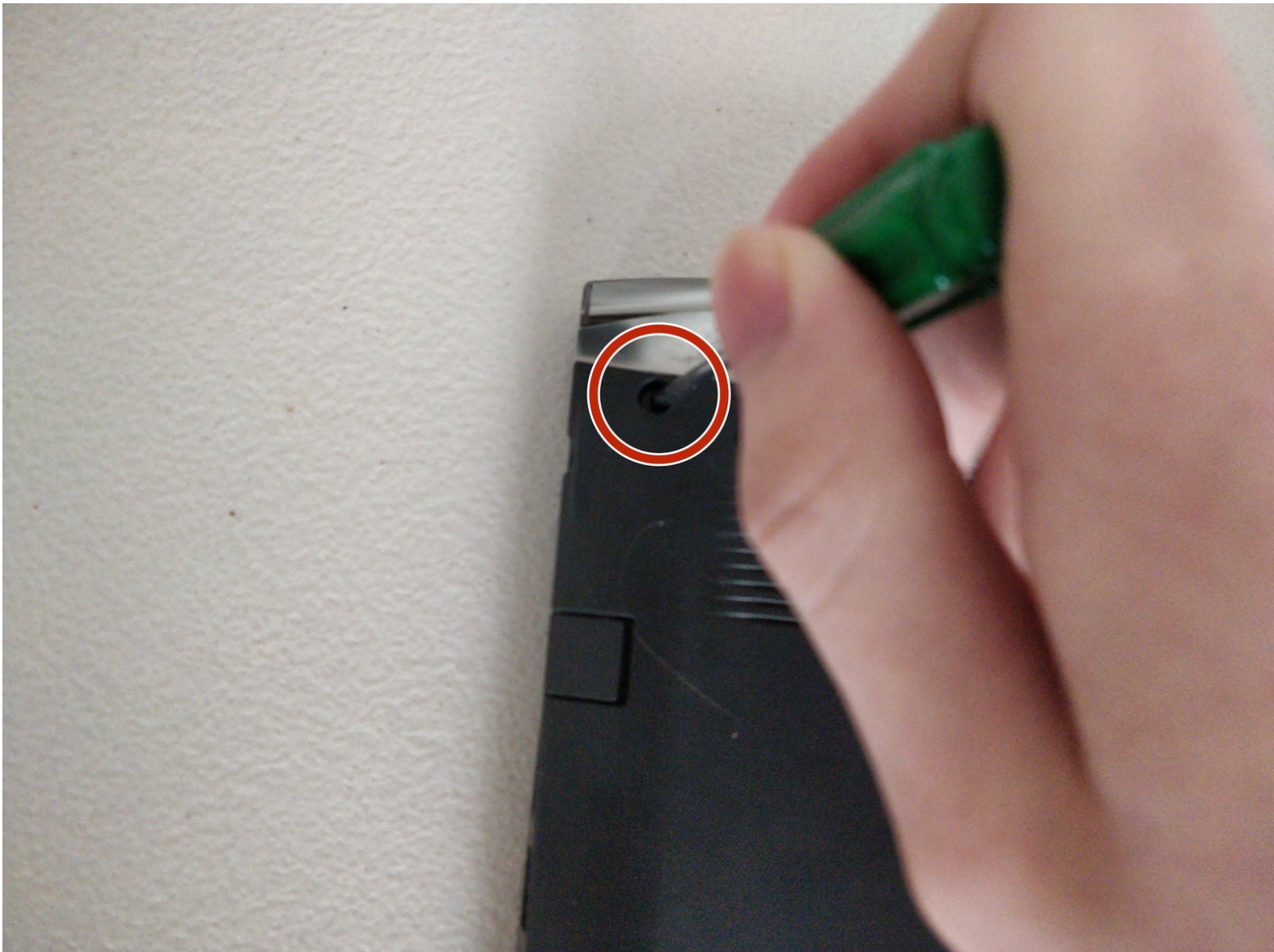




Acer Aspire V Nitro VN7-572G Battery Replacement

Replace the battery in an Acer Aspire VN7-572G laptop.

Written By: Benjamin Doron



INTRODUCTION

Battery power degrades over time, which reduces the portability and function of laptops.

Use this guide to replace the battery in your Acer Aspire V Nitro VN7-572G laptop.

It is very important to take [appropriate precautions](#) if the battery is swollen. This has occurred if the top of the battery is curving, rather than flat, and can be seen as a misshapen keyboard.

Be sure to power down your laptop and unplug from the external charger prior to starting this repair.



TOOLS:

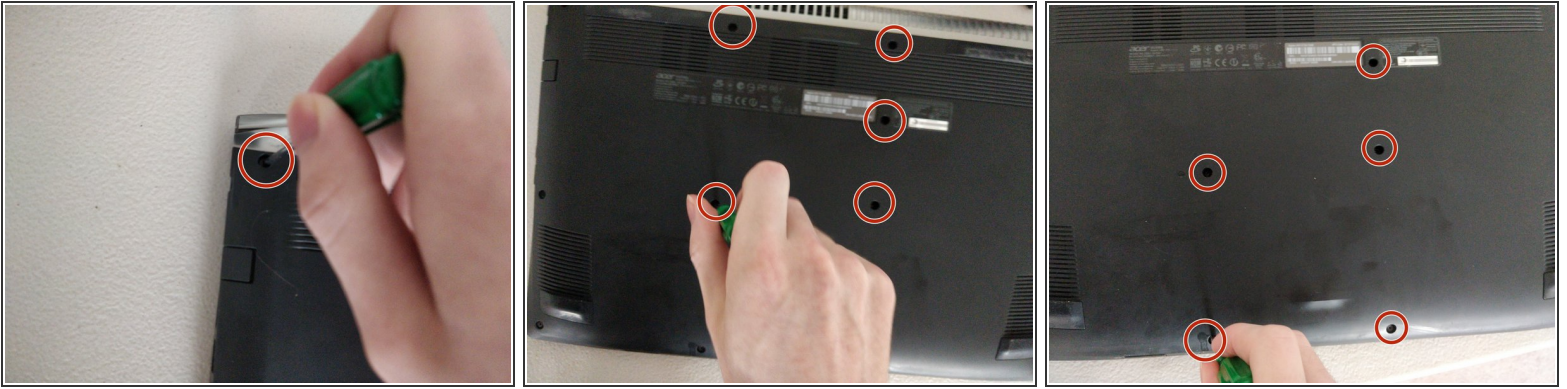
- [Phillips #00 Screwdriver](#) (1)
- [iFixit Opening Picks \(Set of 6\)](#) (1)



PARTS:

- [Acer Nitro 5 Predator Helios 300 Battery](#) (1)

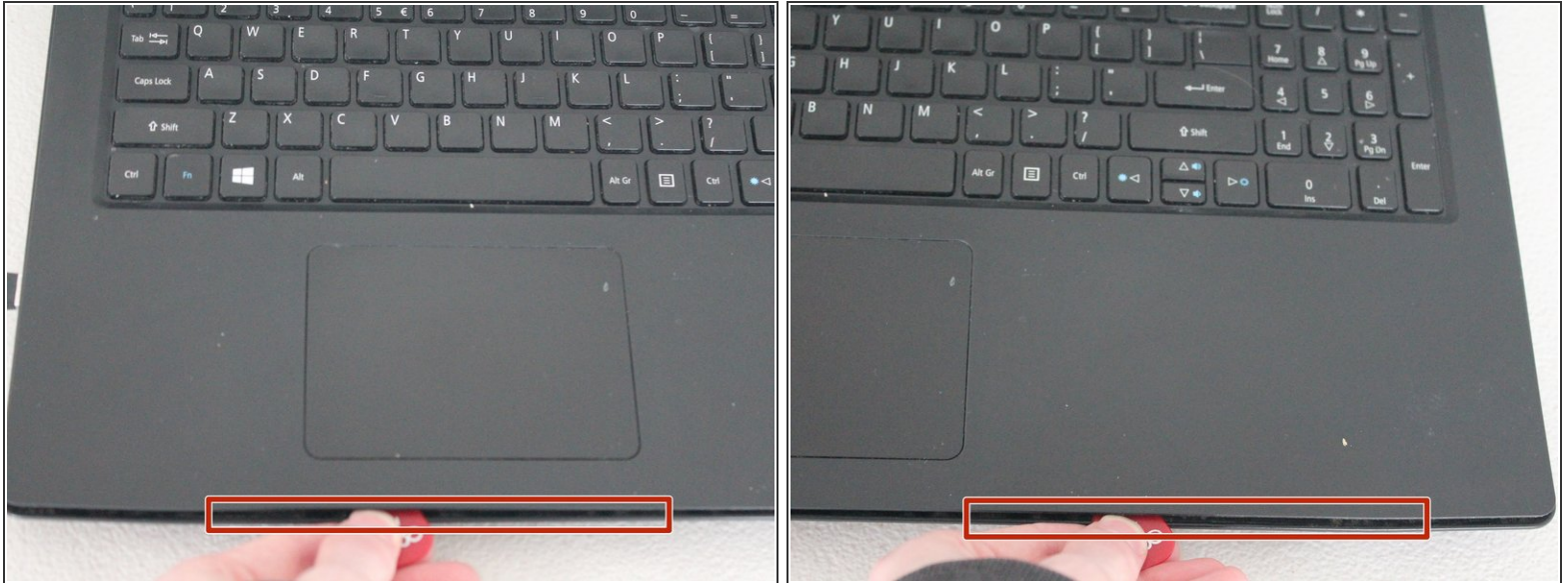
Step 1 — Battery



 Prior to beginning, power off your laptop and unplug from the charger.

- Flip the laptop over so the bottom is exposed.
- Use the Phillips #00 screwdriver to remove the two 8 mm screws at the top-left and top-right of the laptop.
- Remove the remaining 7 mm screws from the bottom of the laptop using the Phillips #00 screwdriver.

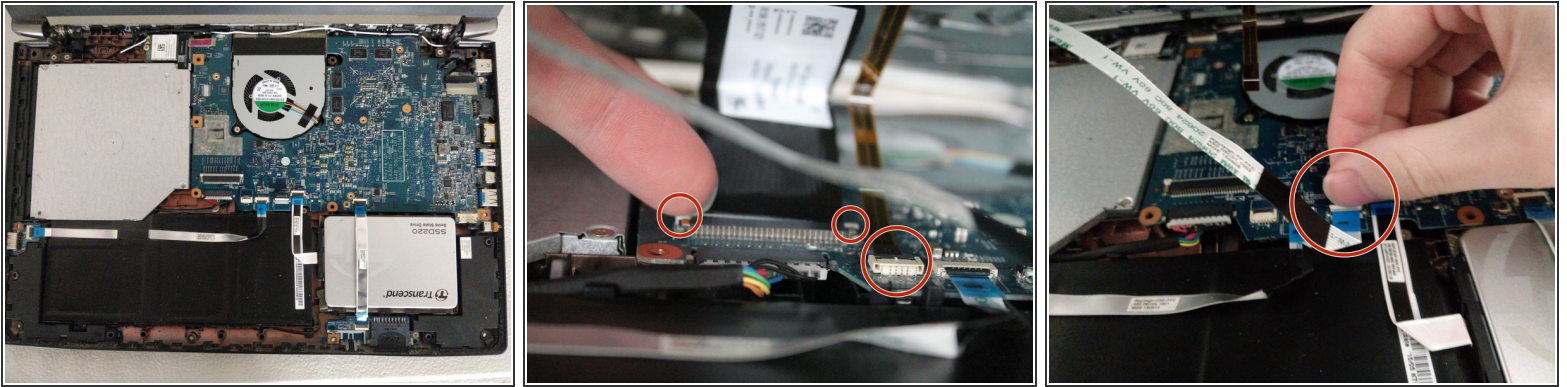
Step 2



- Open the laptop and press the power button to drain any residual power.
 - ⓘ A safety feature prevents the battery from being used while the laptop is opened.
- Use a pick or spudger and insert it between the base and the palm rest. Slide it around the edge to undo the clips holding them together.

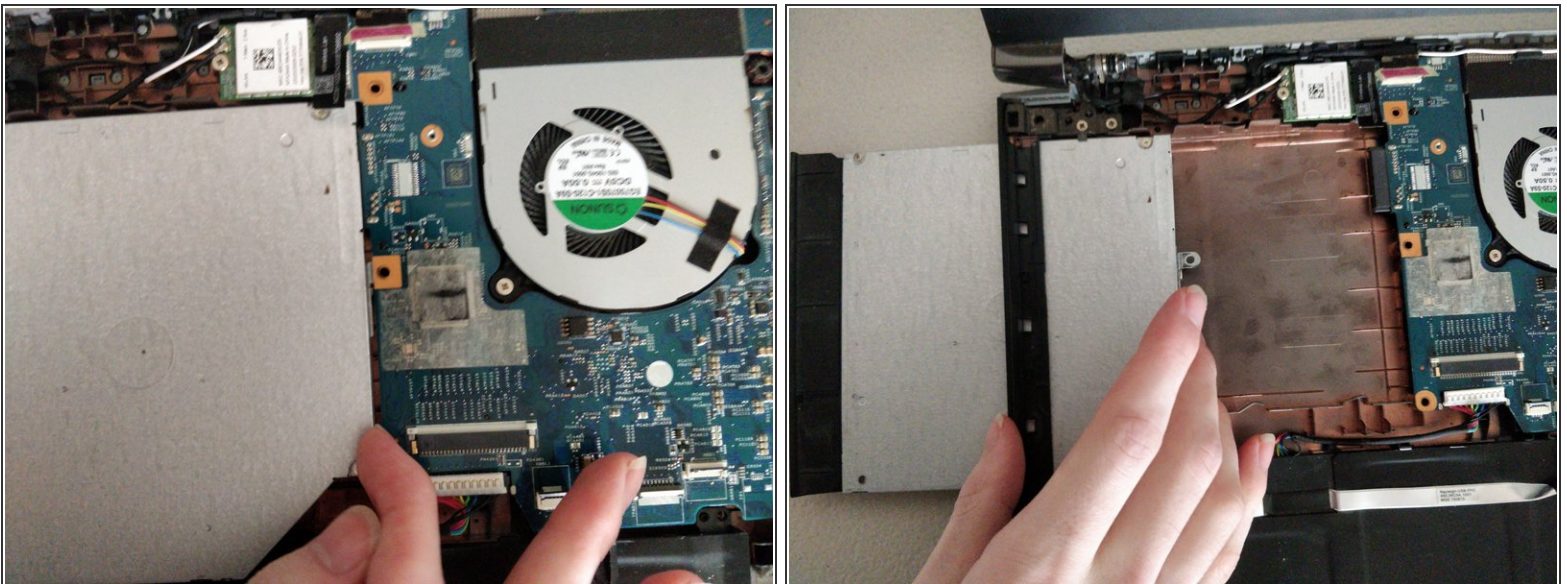
⚠ Do not remove the keyboard from the base yet. It is still connected to the motherboard.

Step 3



- Disconnect the keyboard flex cable by pushing each side of the locking tab to release the connector from the board.
 - ⓘ This is a plunger-style ZIF (zero-insertion force) connector. More information can be found [here](#).
- Release the keyboard backlight connector from the board by levering up the tab with a finger.
 - ⓘ This is the common ZIF connector. More information can be found [here](#).
- Release the touchpad ZIF connector.

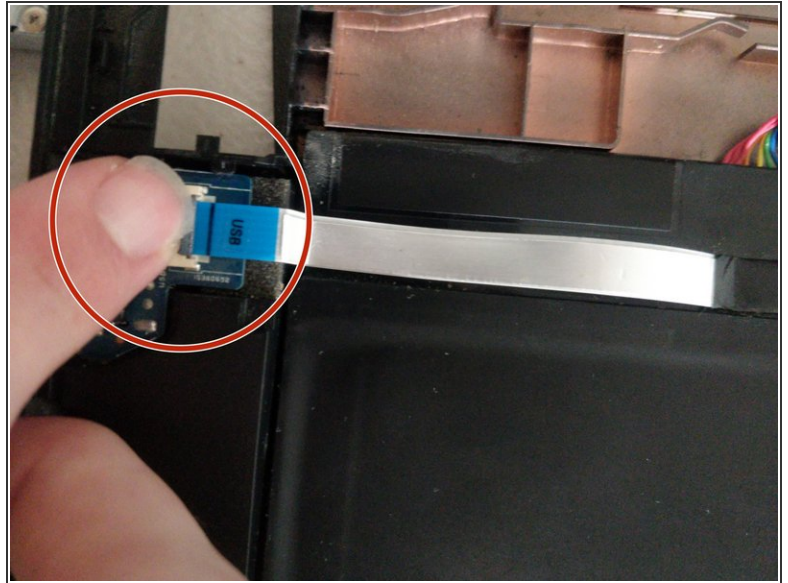
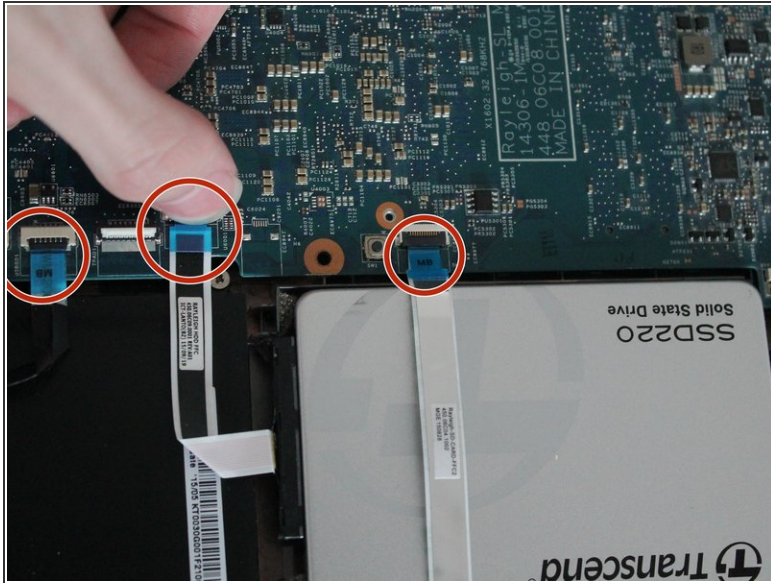
Step 4



- Push the optical drive out with a finger or pick.
 - ⓘ Another screw could be holding the optical drive in.

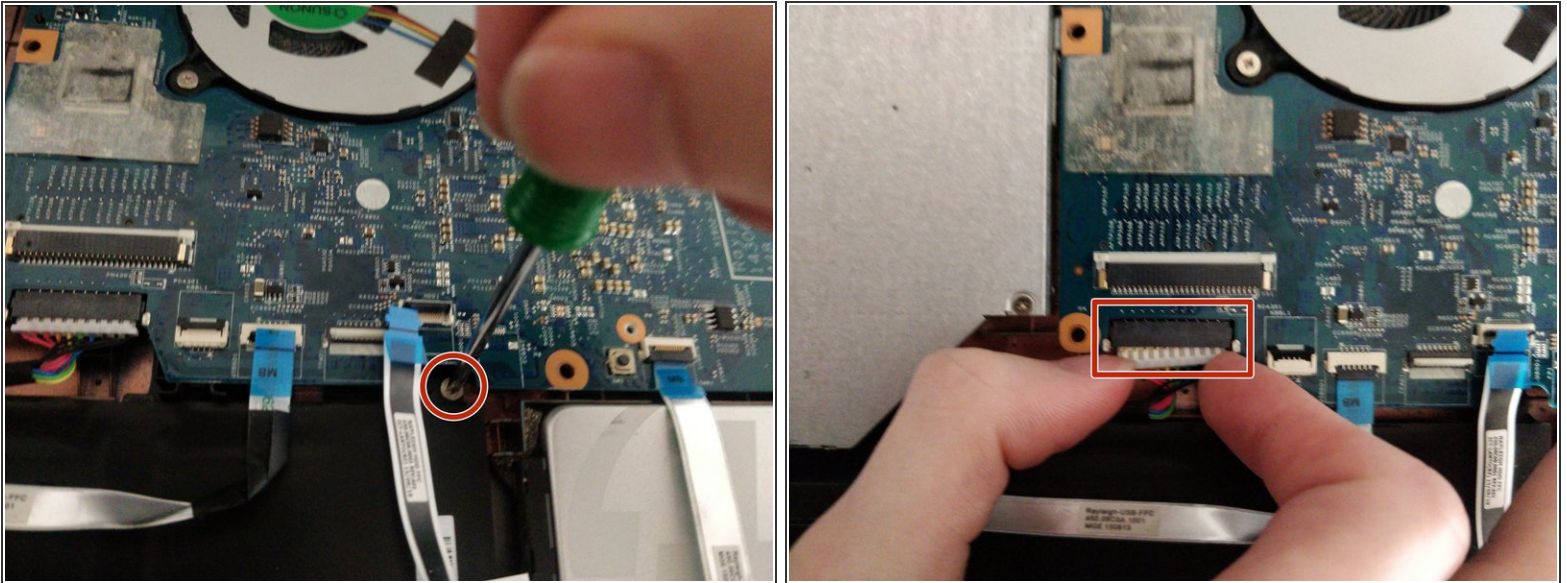
This document was generated on 2022-07-09 02:12:27 AM (MST).

Step 5



- Release the SATA hard drive and USB ZIF connectors from the board.
 - ⓘ Removing the SATA connector is optional only if the battery screw is not easily accessible.
 - ⓘ If the battery screw isn't more accessible, consider also releasing the SD card board ZIF connector and removing the SATA hard drive.
- Release the USB ZIF connector from the breakout board.
 - ⓘ This USB cable is attached to the original battery. Remove and reattach to the replacement battery, if necessary.

Step 6



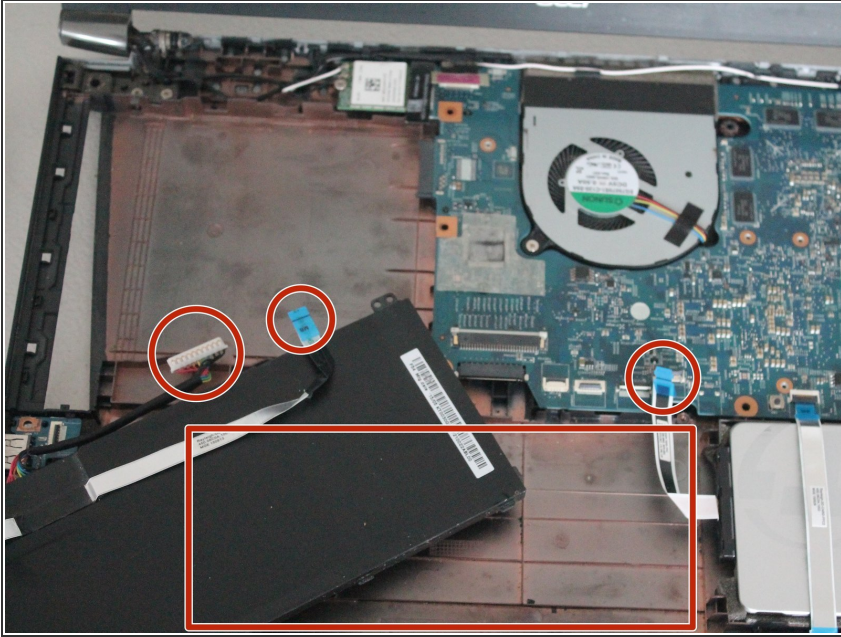
- Use the Phillips #00 to remove the screw holding the battery in place.
- ❗ There may be a second screw holding the battery in at the bottom left.
- Disconnect the battery connector from the board. Grasp it between two fingers and slowly pull it loose.

Step 7



- Lift underneath the top of the battery to remove.
- ⚠ Removing the battery makes the laptop very top-heavy and it might overbalance. Rest the battery on the laptop base, lower the lid somewhat to improve balance, or prepare to catch the laptop.

Step 8



- Install new battery in the same spot as the old one.
- Reconnect all cables and tighten all hardware back up.
- Once everything is reconnected and back together try powering the laptop on.
- ⓘ If everything is working properly, then you did everything correctly. If you are getting no power then you might need to check over your connections.

To reassemble your device, follow these instructions in reverse order.

Dispose of old Lithium-ion batteries appropriately.

- Note that the keyboard connector can be difficult to align and reconnect properly. It should be easier with good visibility. It is recommended to insert the connector flat, parallel to the motherboard, rather than in an angled position between the user's fingers.

If the user wishes to test the keyboard before closing up the device completely, they can connect the laptop to the AC adaptor, which will allow it to power on. Consider using caution.