



How to Open the Samsung Galaxy Buds Plus

How to open the Samsung Galaxy Buds+ for repairs.

Written By: Adriana Zwink



INTRODUCTION

Use this guide to open your Samsung Galaxy Buds+ for repairs. The photos for this guide were taken with the left earbud, but the procedure is the same for both earbuds.

Galaxy Buds+ are rated IPX2 for ingress-resistance, meaning they are splash resistant. After this repair, they may lose their water protection.




TOOLS:

- [iFixit Opening Tool](#) (1)
 - [Large Needle Nose Pliers](#) (1)
 - [ESD Safe Tweezers Blunt Nose](#) (1)
-

Step 1 — Remove the eartip



 If possible, discharge your Galaxy Buds+ before replacing the battery.

- Use your fingers to remove the silicone eartip by pulling it upwards while slipping it off the earbud.

Step 2 — Remove the earbud's rubber wingtip



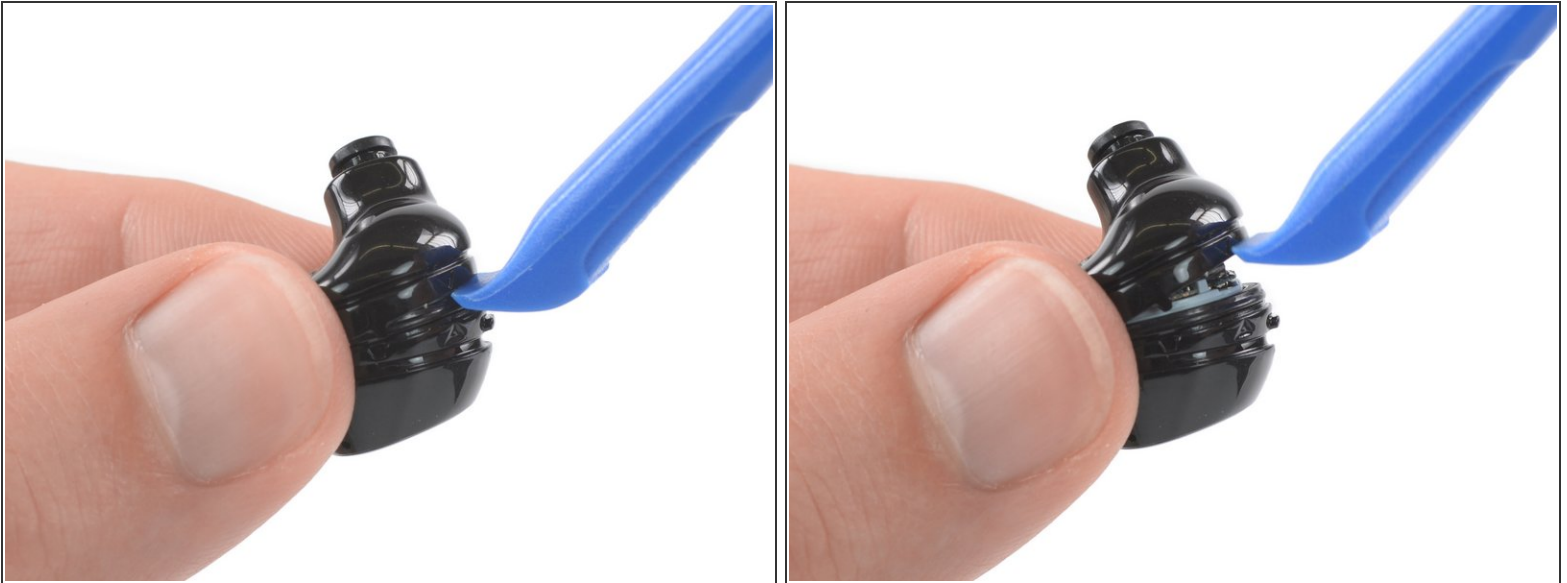
- Use your fingers or a pair blunt nose tweezers to remove the earbud's rubber wingtip by pulling it upwards while slipping it off the earbud.

Step 3 — Create a gap



- Use a pair of pliers to hold the earbud horizontally along the seam between the upper and lower halves of the case.
 - ⓘ To protect the earbud from scratches, tape the surface of the pliers or place a cloth between the pincers.
- Apply steady, even pressure to either side of the earbud along the main housing seam to create a gap.

Step 4 — Insert an opening tool



- Insert an opening tool into the gap between the two cases of the earbud.
- Use the opening tool to pry the two cases apart.
- ⓘ You may need to work your way around the entire earbud with the opening tool.

⚠ Don't remove the upper case yet, it's still connected to the board.

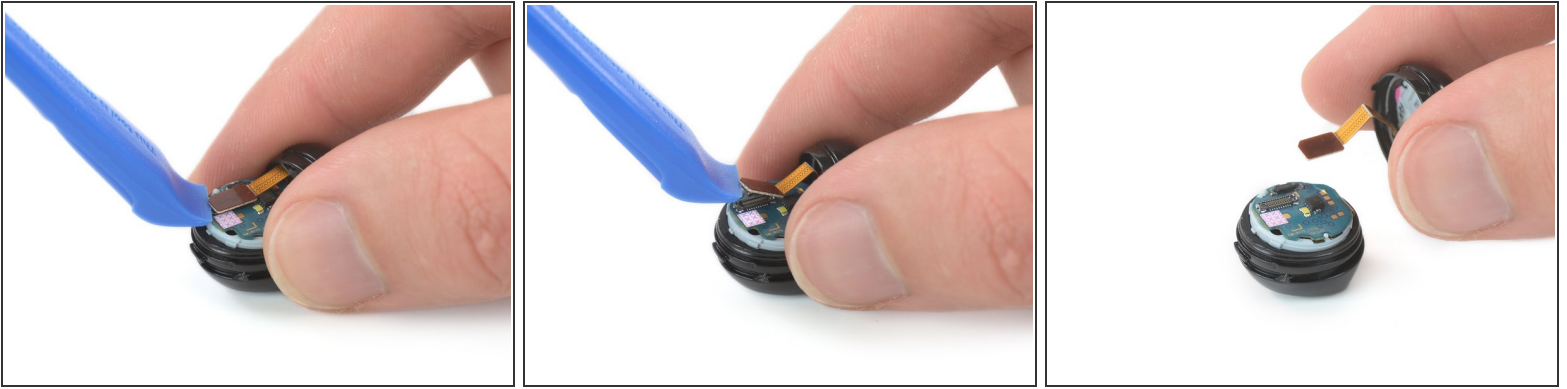
Step 5 — Access the connector



⚠ Make sure that the flex cable is not under tension during the following step.

- To remove the upper part of the earbud from the board, place it on the table to access the connector.

Step 6 — Disconnect the upper earbud case



- Use an opening tool to disconnect the upper earbud case from the board by prying the connector out of its socket.
- Remove the upper earbud case.

To reassemble your device, follow these instructions in reverse order. Apply new adhesive where necessary after cleaning the relevant areas with isopropyl alcohol (>90%).

Take your e-waste to an [R2 or e-Stewards certified recycler](#).

Repair didn't go as planned? Try some [basic troubleshooting](#), or ask our [Answers community](#) for help.