



DrayTek Vigor 2820 Teardown

Written By: knipwim



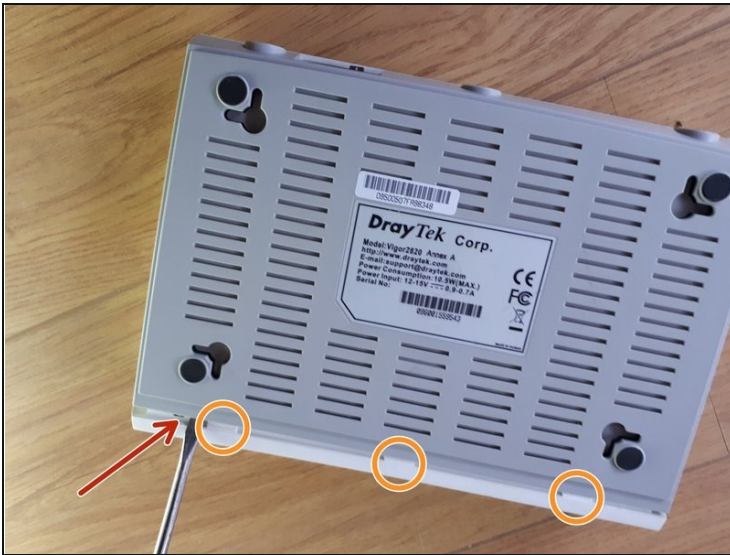
TOOLS:

flathead screwdriver 7/32" (1)

Flathead 3/32" or 2.5 mm Screwdriver (1)

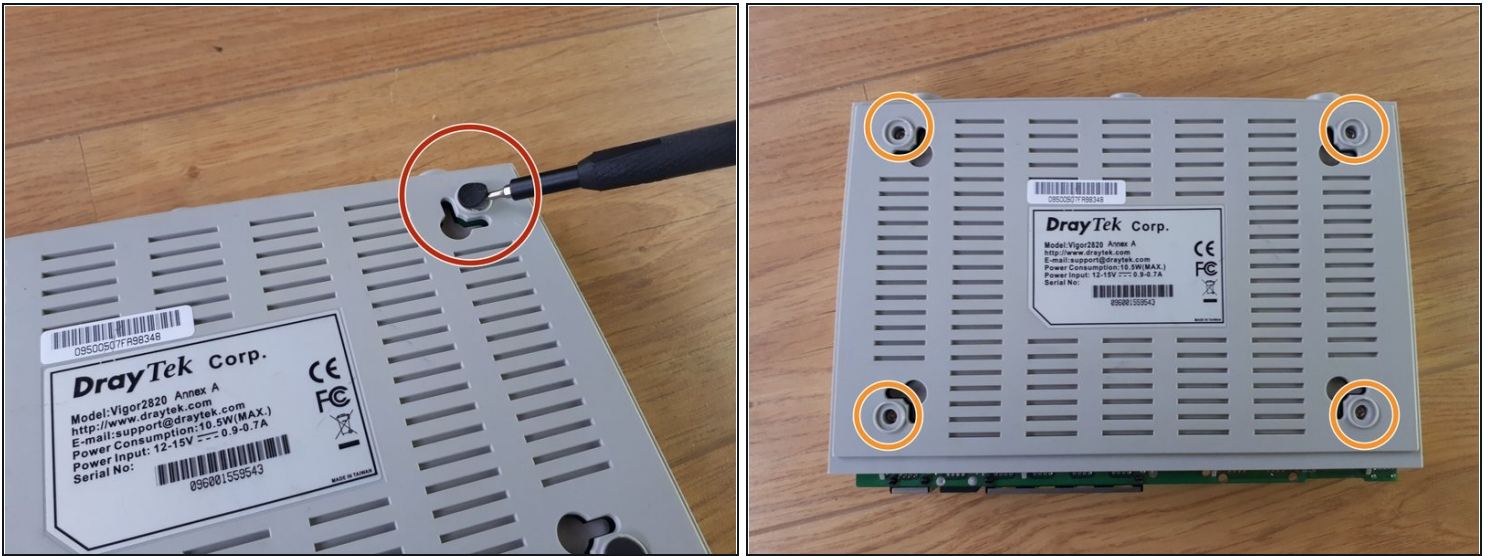
Phillips #1 Screwdriver (1)

Step 1 — remove the front plate



- The front plate is attached to the bottom with 3 clips.
- Using a flathead screwdriver, pry open the first clip.
- Use a flat object to hold the first clip open.
- Use the flathead to open the remaining clips.

Step 2 — disassemble case



- With the [2.5mm flathead](#), remove the rubber feet.
- Unscrew the 4 screws holding the top and bottom parts of the case together.

Step 3 — remove the ADSL module



- Unscrew the screws attaching the ADSL module to the mainboard.
- The mainboard:
 - Nanya Technology NT5DS16M16CS-5T 256Mb DDR SDRAM
 - Infineon Technologies PSB 6972 HL V1.2 Ethernet Switch Controller
 - Delta Electronics LFE8731
 - Delta Electronics LFE9208A

