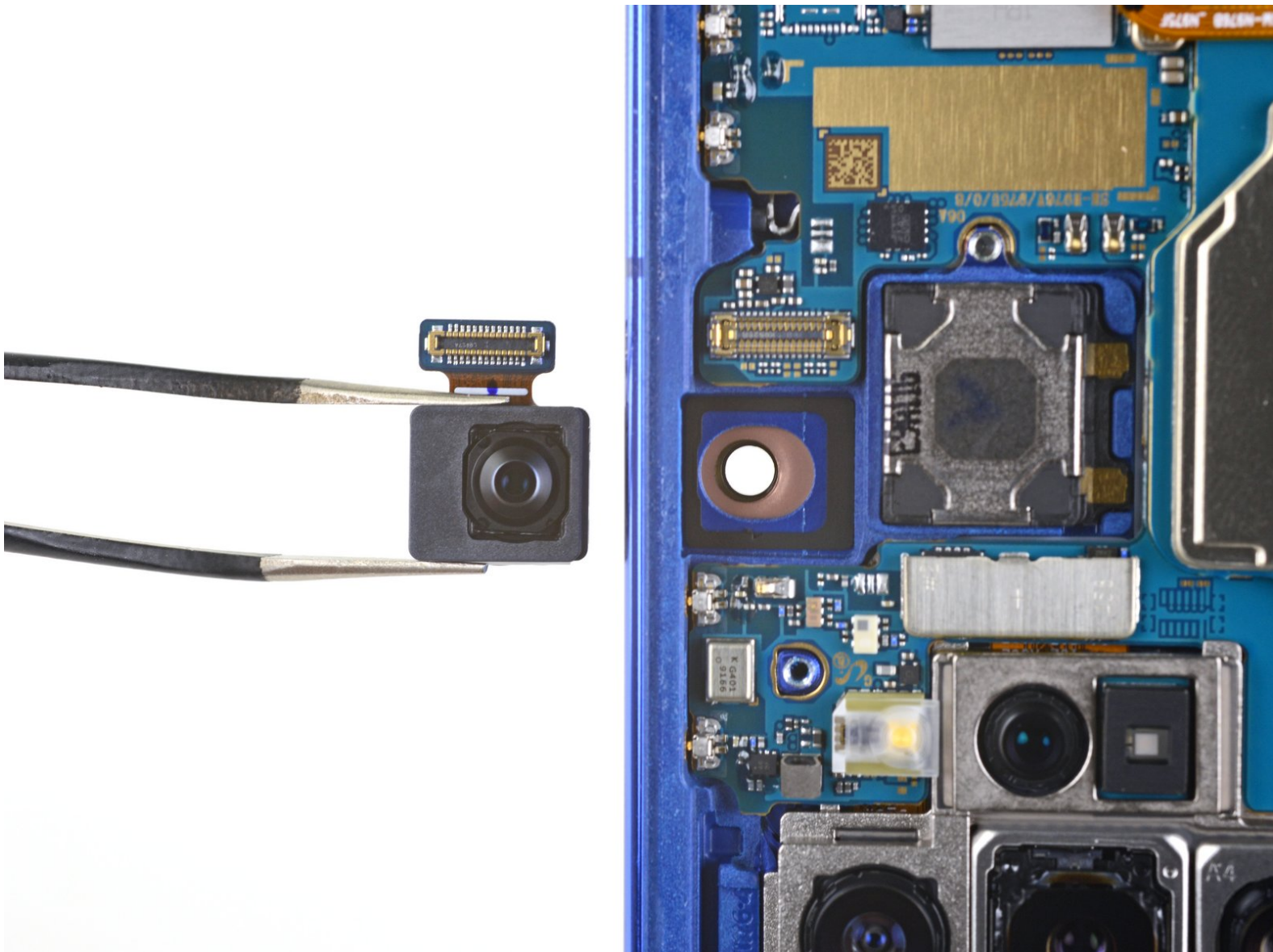




# Samsung Galaxy Note10 Plus 5G Front-Facing Camera Replacement

Use this guide to remove or replace the...

Written By: Arthur Shi



# INTRODUCTION

Use this guide to remove or replace the front-facing camera on your Samsung Galaxy Note10+ 5G.

*This guide uses steps written for the non-5G Note10+. Some images in this guide may show minor discontinuities. They shouldn't affect the overall guide procedure.*



## TOOLS:

- [iOpener](#) (1)
- [iFixit Opening Picks \(Set of 6\)](#) (1)
- [Suction Handle](#) (1)
- [Spudger](#) (1)
- [Tweezers](#) (1)
- [Phillips #00 Screwdriver](#) (1)



## PARTS:

- [Galaxy Note10+ Rear Cover Adhesive](#) (1)

## Step 1 — Heat the rear cover



**⚠** Completely power off your phone before you begin disassembly.

- [Prepare an iOpener](#) and apply it to the left edge of the rear cover for one minute.
- ⓘ A hair dryer, heat gun, or hot plate may also be used, but be careful not to overheat the phone—the display and internal battery are both susceptible to heat damage.

## Step 2 — Insert an opening pick



- Apply a suction cup to the heated edge of the rear cover, as close to the edge as possible.
  - ❗ If your rear cover is badly cracked, covering it with a layer of clear packing tape may allow the suction cup to adhere. Alternatively, very strong tape may be used instead of the suction cup. If all else fails, you can superglue the suction cup to the broken cover.
- Pull up on the suction cup with strong, steady force to create a gap between the rear cover and the frame.
  - ❗ Depending on the age of your phone, this may be difficult. If you are having trouble, apply more heat to the edge and try again.
- Insert the point of an opening pick into the gap.

### Step 3 — Begin to slice the adhesive



- Slide the opening pick along the left edge towards the bottom left corner to slice the adhesive.  
**⚠ Don't insert the opening pick more than halfway into the phone or you risk damaging internal components.**
- Leave the pick inserted in the bottom left corner to prevent the adhesive from re-sealing.

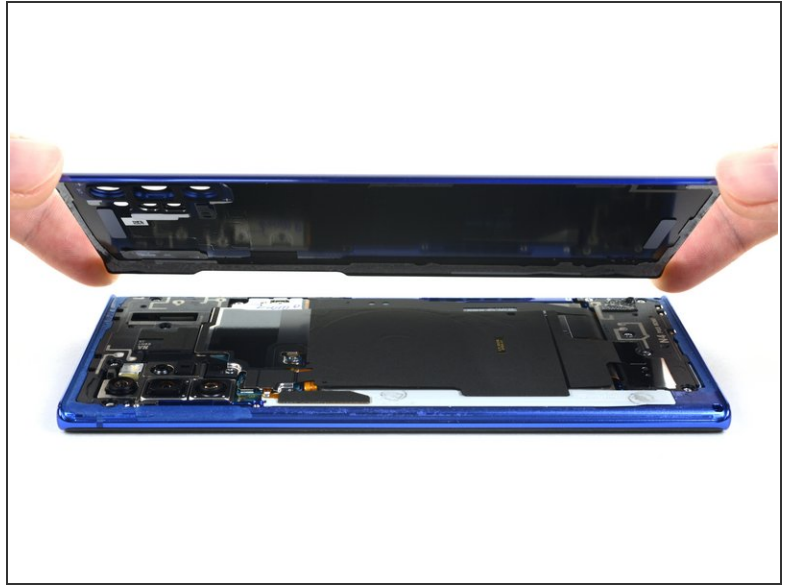
### Step 4 — Slice around the perimeter of the phone



- Repeat the previous heating and cutting procedure for the remaining three sides of the phone.
  - Leave an opening pick on each side as you continue to the next to prevent the adhesive from resealing.
- i** The rear cover will begin to separate from the phone as you finish all sides of the phone.



## Step 5 — Lift off the rear cover



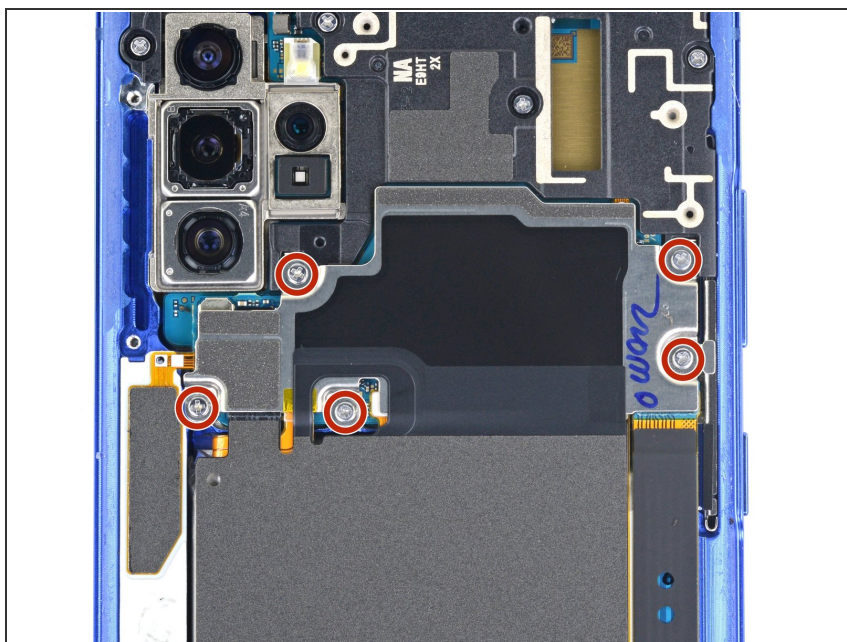
- Lift the rear cover straight up to remove it.

✦ [Follow this guide](#) to reinstall the rear cover and replace the adhesive.

ⓘ Be sure to turn on your device and test your repair before installing new adhesive and resealing the device.

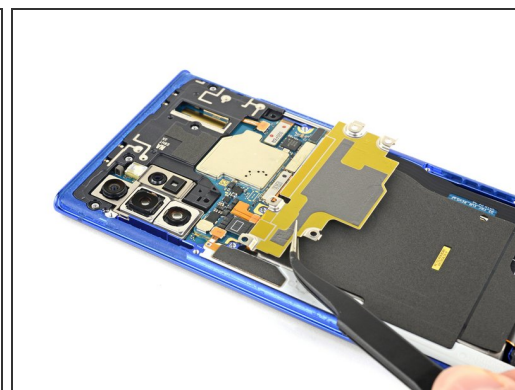
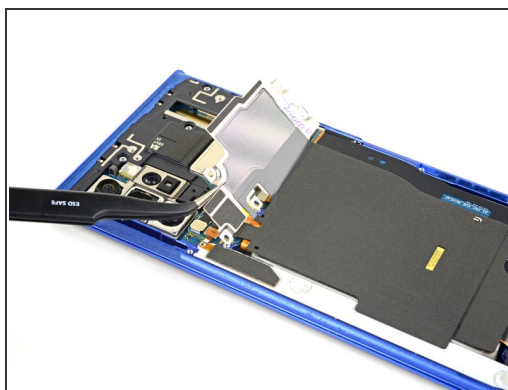
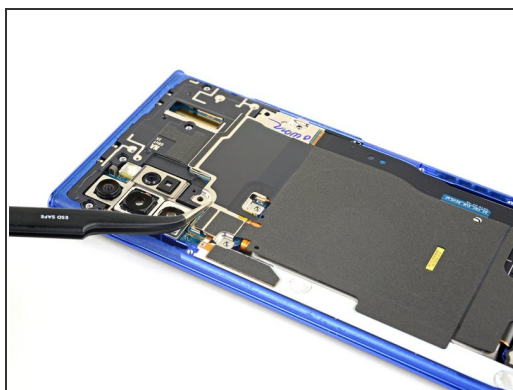
✦ If you're using Tesa tape to reattach components, [follow this guide](#).

## Step 6 — Lift up the metal cover



- Use a Phillips screwdriver to remove the five 4 mm screws securing the wireless charging coil.

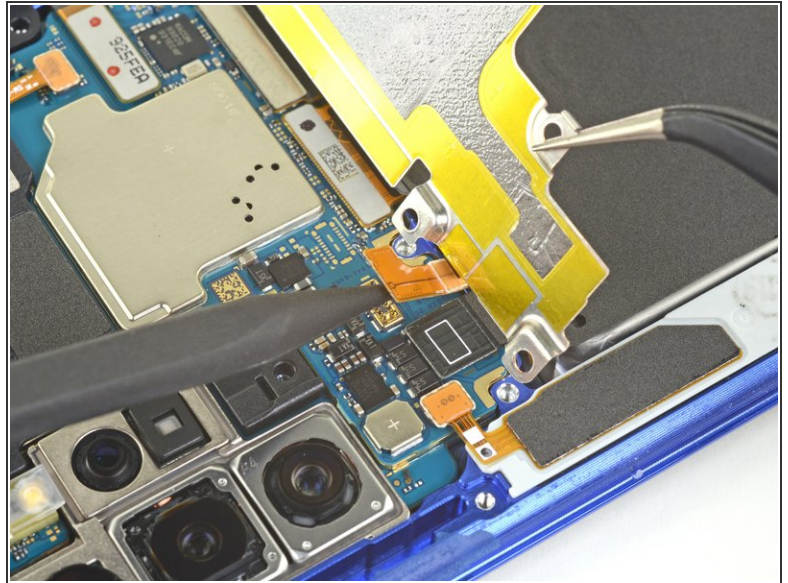
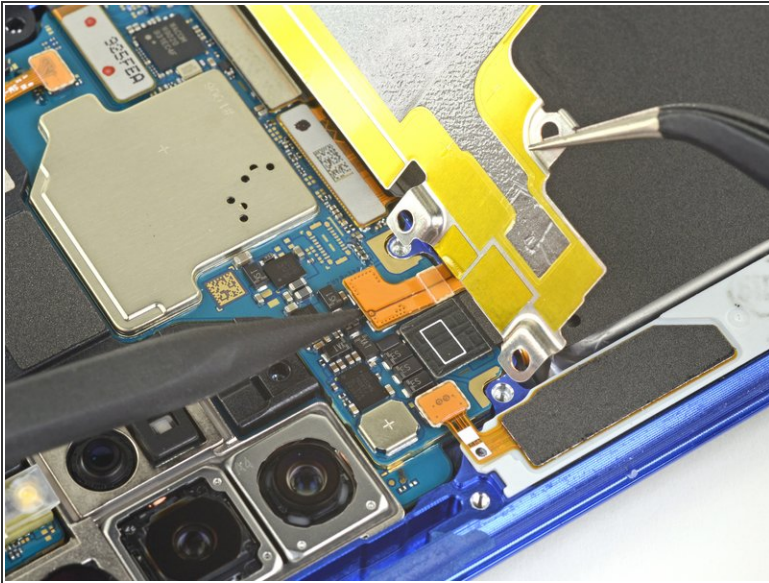
## Step 7



- Use a pair of tweezers to lift up and flip back the metal shield covering the battery connector.

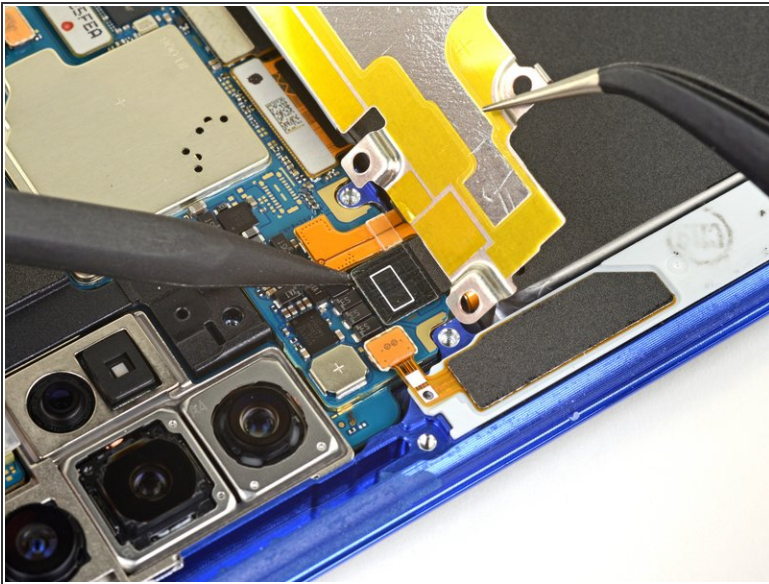


## Step 8 — Disconnect the battery



- While holding the metal shield up and out of the way, use the pointed end of a spudger to pry up the battery connector to disconnect it.

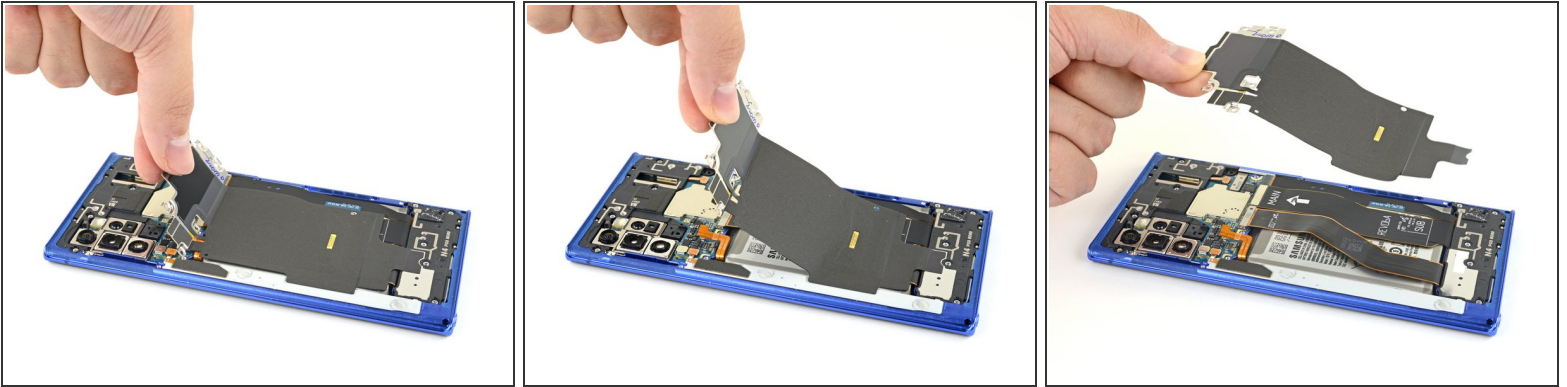
## Step 9 — Disconnect the wireless charging coil



- Use the pointed end of a spudger to disconnect the wireless charging coil connector from the motherboard.

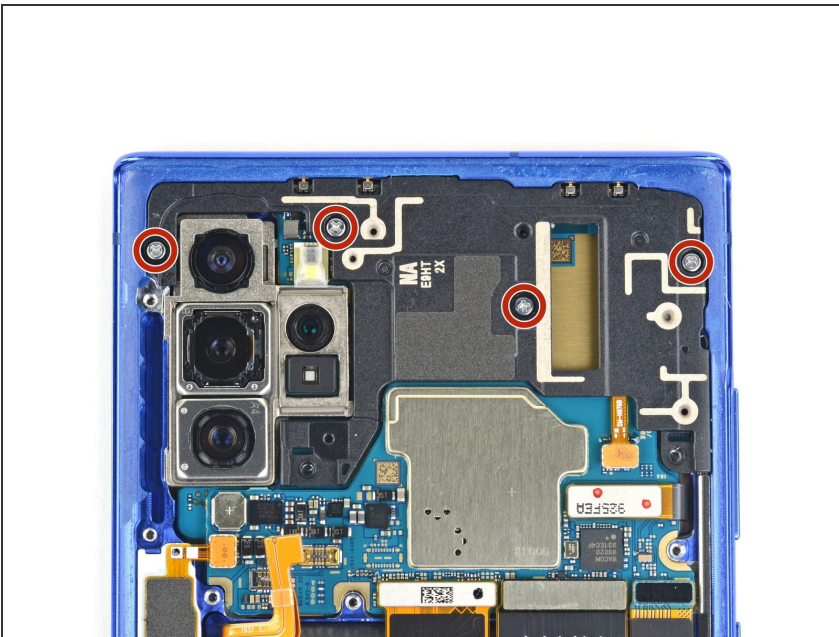


## Step 10 — Remove the wireless charging coil



- Tilt the metal shielding up so you can grip it with your fingers.
- Peel the wireless charging coil up and away from the device.
  - ❗ The wireless charging coil is secured to the phone with some light adhesive.
- Remove the wireless charging coil.

## Step 11 — Remove the front-facing camera



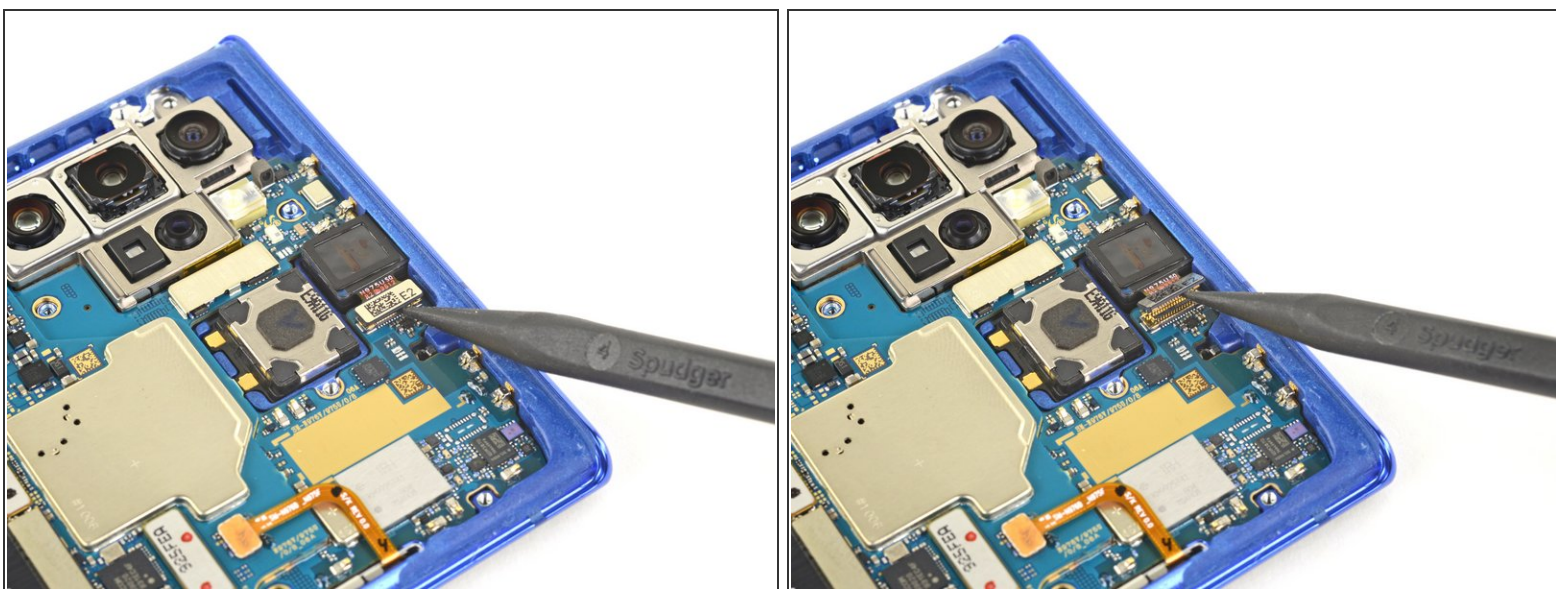
- Use a Phillips screwdriver to remove the four 4 mm screws securing the top plastic cover.

## Step 12



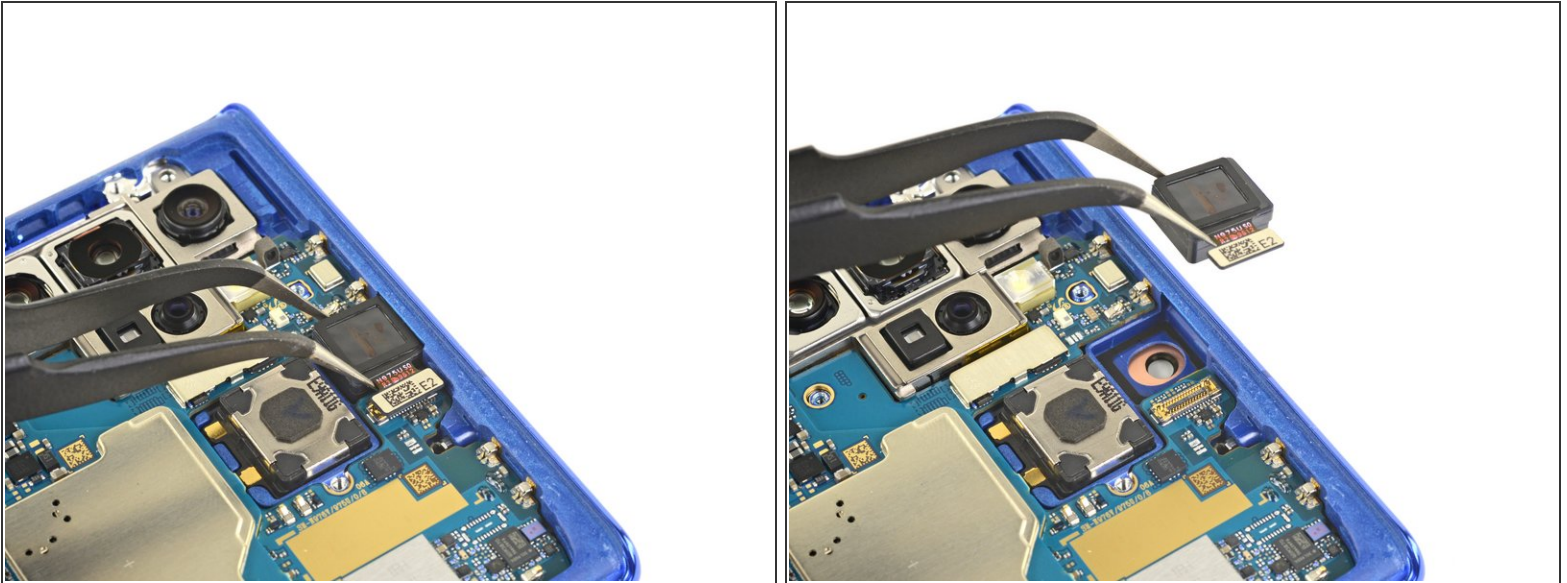
- Use a pair of tweezers to pivot the top plastic cover up and off of the phone.

## Step 13



- Use the pointed end of a spudger to pry the front-facing camera connector straight up from the motherboard.

## Step 14



- Use a pair of tweezers to remove the front-facing camera.

**To reassemble your device, follow the above steps in reverse order.**

Take your e-waste to an [R2 or e-Stewards certified recycler](#).

Repair didn't go as planned? Try some [basic troubleshooting](#), or ask our [Answers community](#) for help.