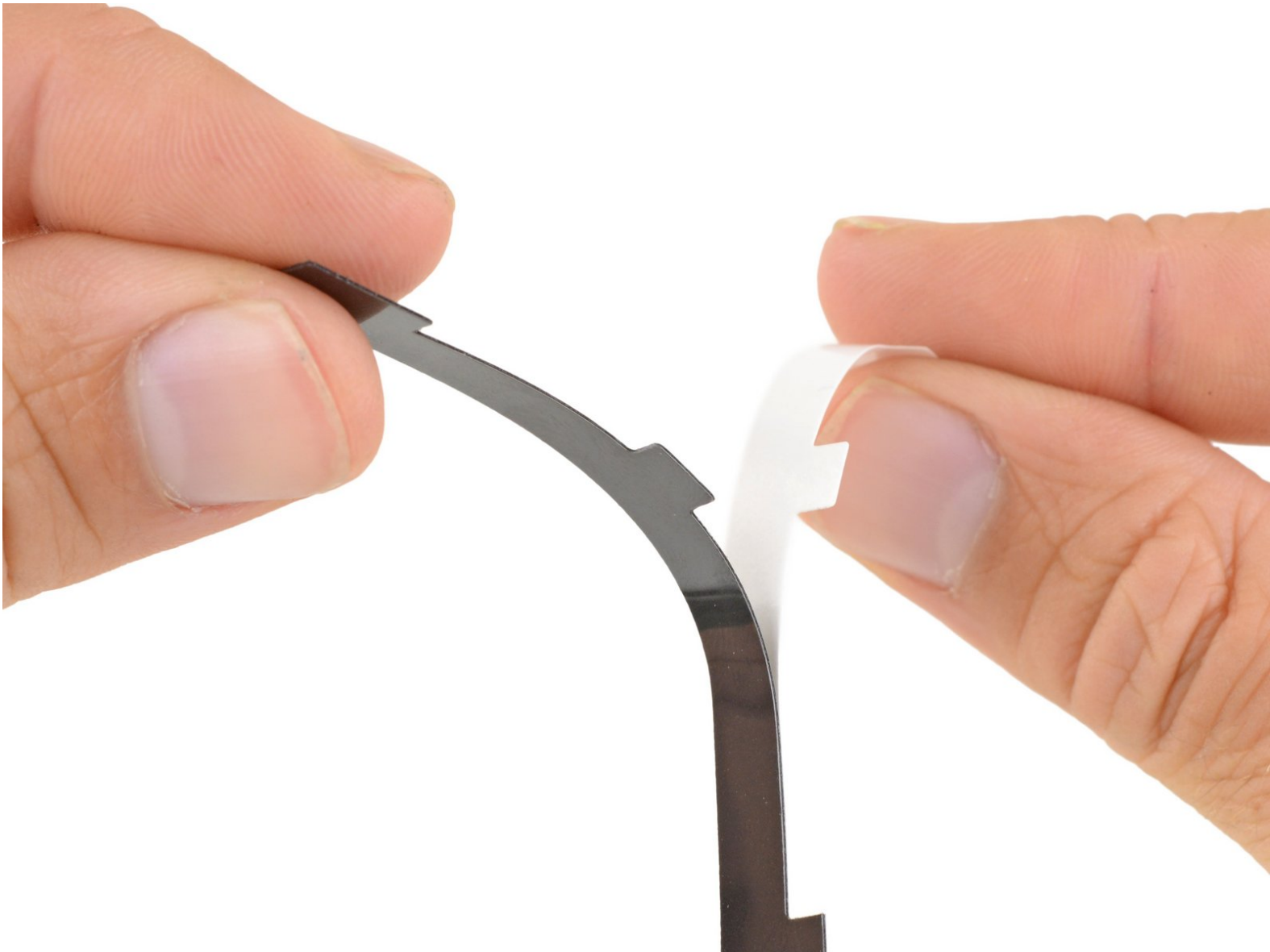




Microsoft Surface Pro 4 Screen Adhesive Replacement

How to replace the screen adhesive on a Microsoft Surface Pro 4.

Written By: Sam Omiotek



INTRODUCTION

Follow this guide to replace the screen adhesive on a Microsoft Surface Pro 4. This guide is meant to be used with our [Surface Pro 4 repair guides](#), most of which require removal of the display.

Some photos in this guide are from a different model and may contain slight visual discrepancies, but they won't affect the guide procedure.



TOOLS:

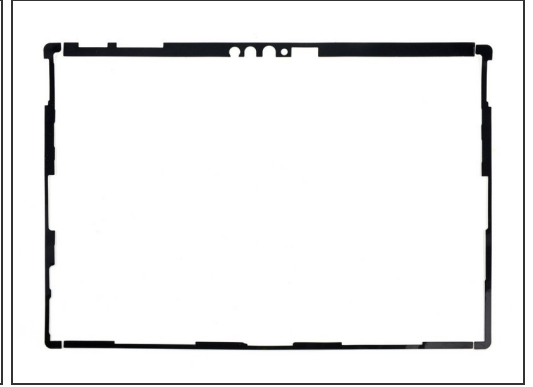
- [Spudger](#) (1)
- [iFixit Adhesive Remover \(for Battery, Screen, and Glass Adhesive\)](#) (1)
- [Microfiber Cleaning Cloths](#) (1)



PARTS:

- [Surface Pro 4 Adhesive Strips](#) (1)

Step 1 — Remove the old adhesive



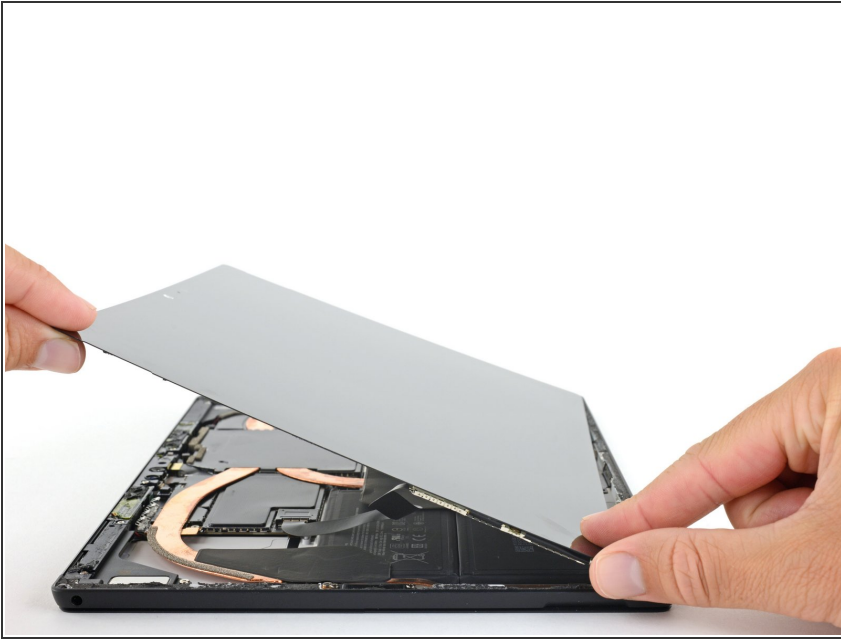
- Scrape away all traces of adhesive and debris from the Surface's case and screen.
- Use high concentration isopropyl alcohol (over 90%) or iFixit adhesive remover and a lint-free cloth to clean the adhesion surfaces on both the case and the screen.
- ⚠ If glue or glass remnants are left behind, the new screen will not mount correctly and may be damaged.
- Lay the adhesive strips out to get an idea of where they go.

Step 2 — Apply the new adhesive



- Peel the white backing off of one adhesive strip, and carefully align it with the edge that matches the cutouts in the strip.
- Lay the strip down lightly on its matching edge and make sure all the cutouts and edges of the strip line up with the Surface case.
- Once aligned, use your fingers to press the adhesive strip down against the case.
- Repeat this procedure for the remaining three adhesive strips.

Step 3 — Install the display



- Continue reassembly until the cables are reconnected and you're ready to install the screen.
- *i* If possible, test your screen's functionality before sticking it in place.
- Remove the clear backing from the adhesive strips.
- Align the screen with the case and set it on top of the adhesive. Once it's aligned, press down on the edges of the screen to set the adhesive.
- Apply a few books worth of weight on top of the screen for an hour to help the adhesive bond.

Take your e-waste to an [R2 or e-Stewards certified recycler](#).

Repair didn't go as planned? Try some [basic troubleshooting](#), or ask our [Answers community](#) for help.