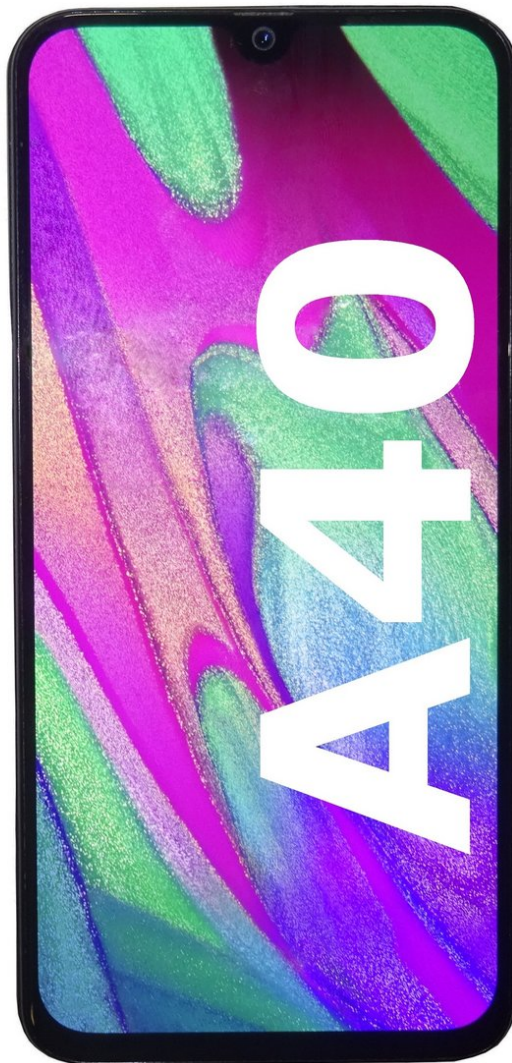




# Samsung Galaxy A40 Charging Board Replacement

Written By: ZFix



---

## INTRODUCTION

[video: <https://youtu.be/onBNEUzrnS4>]

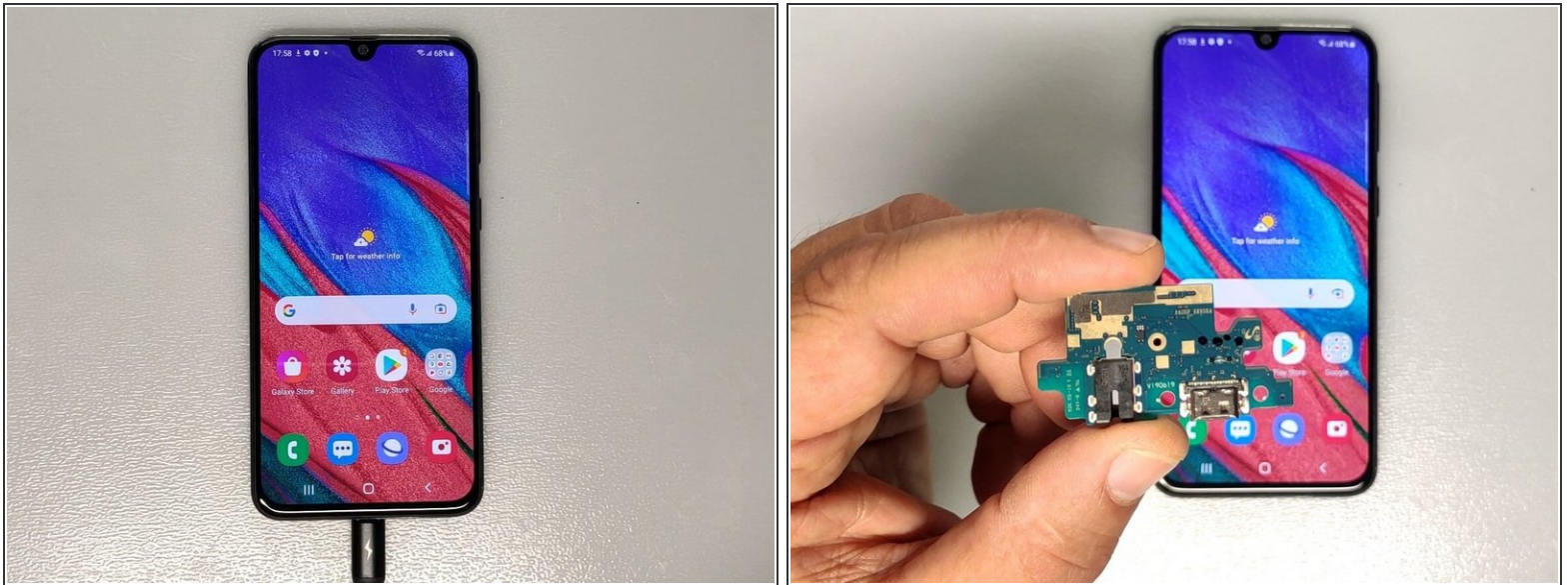
---



### TOOLS:

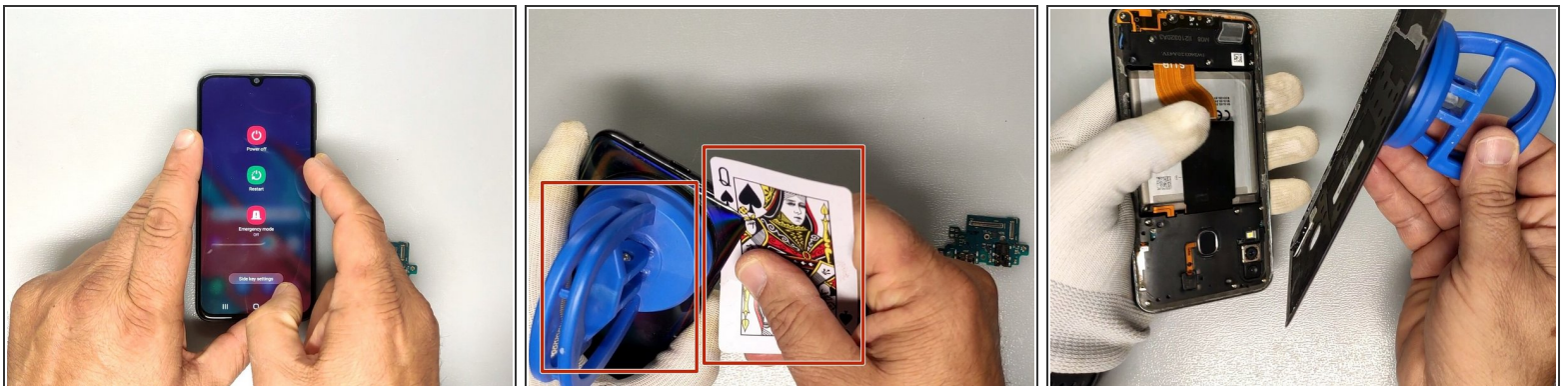
- [Spudger](#) (1)
  - [Phillips #0 Screwdriver](#) (1)
  - [Tweezers](#) (1)
-

## Step 1 — Charging Dock / Charging Board



- i** The spare part: Daughter board with Charging port, Microphone, Main flex cable connector, display connector, 3G, 4G antennas

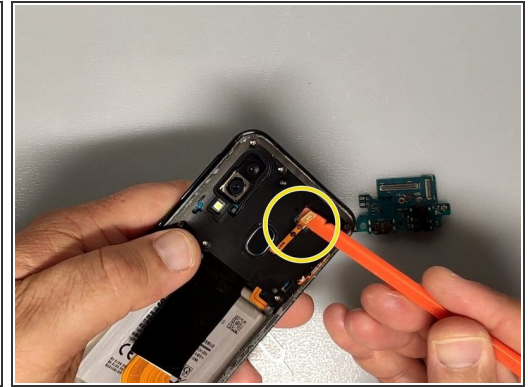
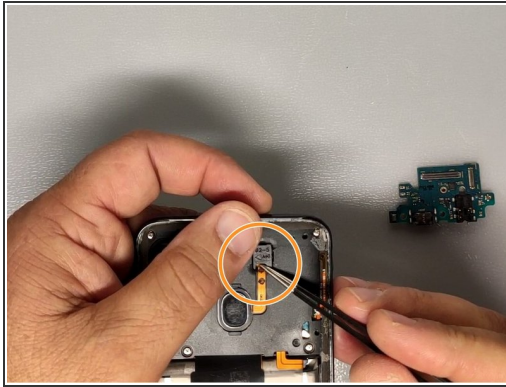
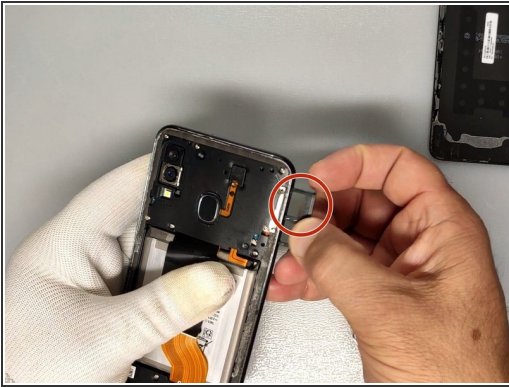
## Step 2 — Remove the Back Cover



- Turn off the device by pressing and holding the small button on the right side. After a few seconds, press the **Power Off** button and wait until the device has completely shut off
- To soften the adhesive, use a heat gun or heating pad to warm up the device.
- Use a Spudger (Or playing card) , Suction Cup, and Isopropyl alcohol to separate the back cover.



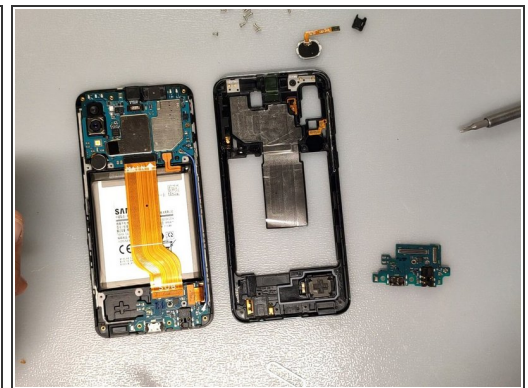
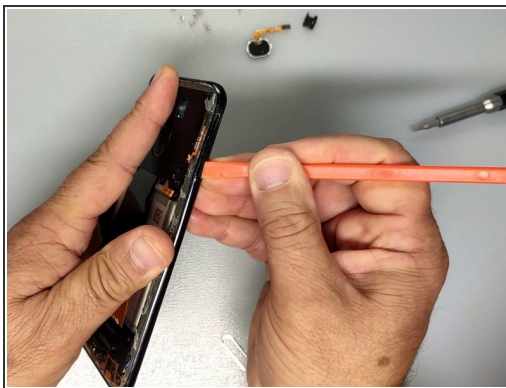
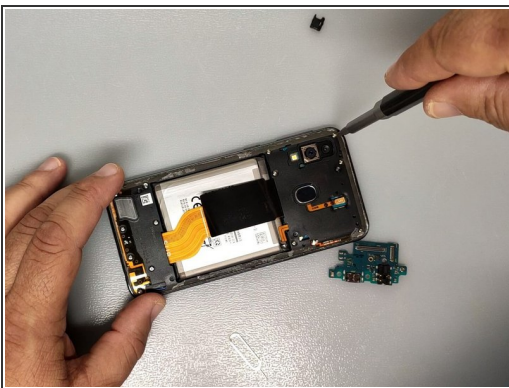
### Step 3 — Remove the Sim Card Tray/Fingerprint Sensor



**⚠ Be very careful when removing the ribbons in this step! Damaging the ribbons may cause parts of your phone to stop working**

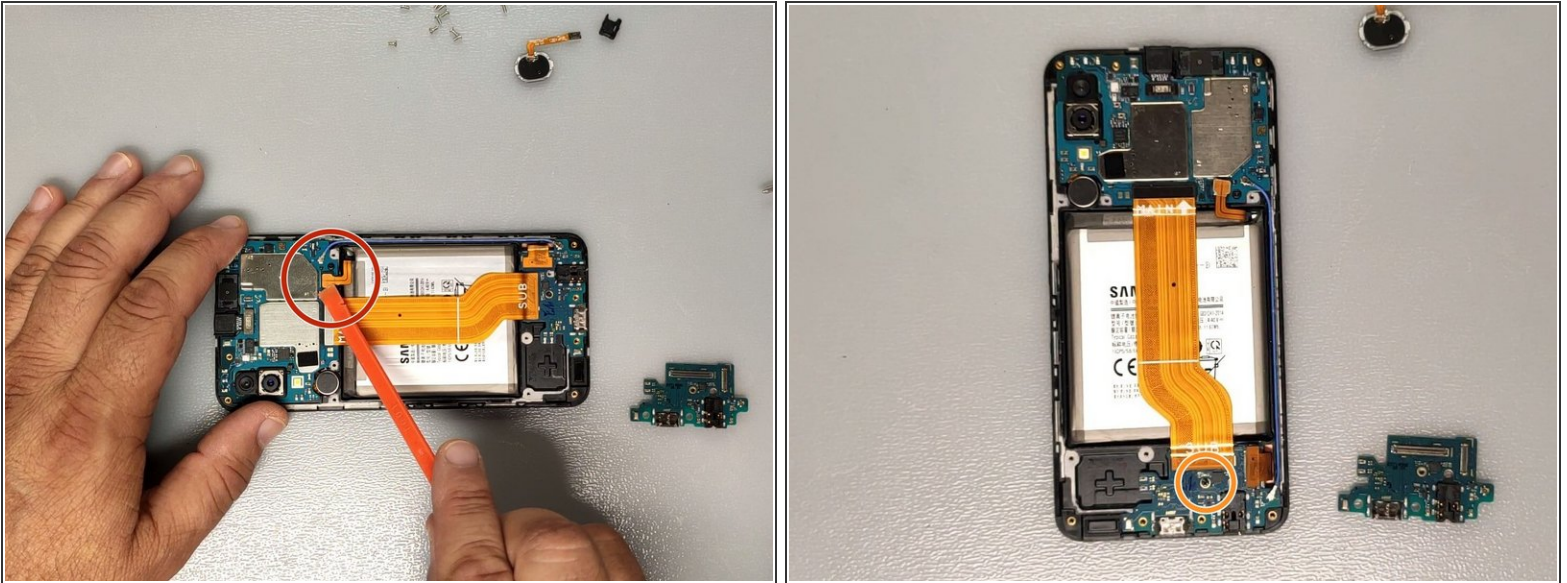
- Remove the SIM tray.
- Remove the plastic cover that covers the Fingerprint flex connector.
- Disconnect the Fingerprint Sensor.

### Step 4



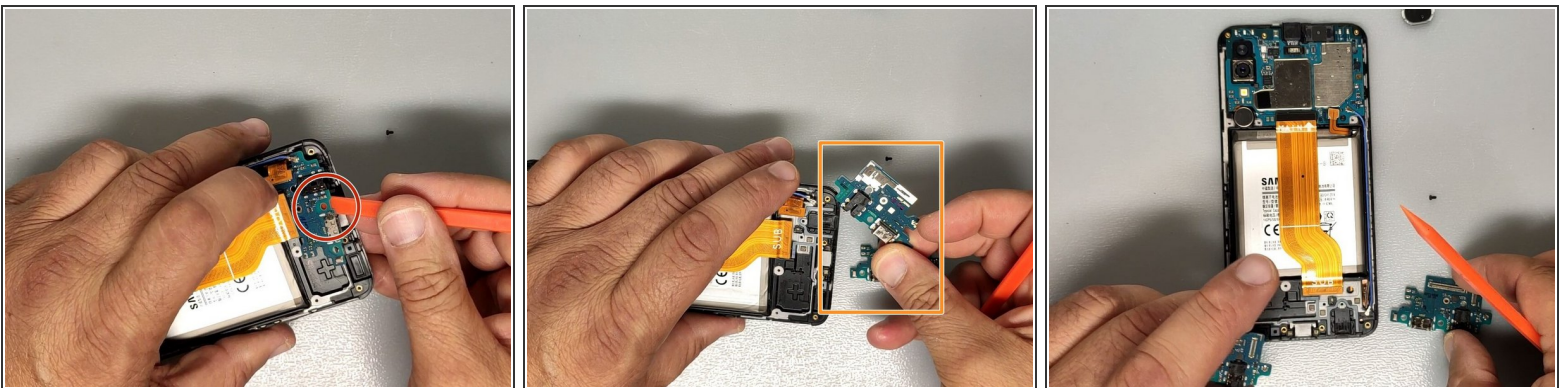
- Remove the 13 screws
- Remove the back cover

## Step 5



- Disconnect the Main flex cable, Display flex cable and the Coaxial antenna cable.
- Remove the black screw securing the charging board.

## Step 6



- Use Plastic tool to separate the charging board from the frame.
- ⓘ Warm the charging board slightly to make it easier to disassemble.
- Now, install the new board and test the device.

To reassemble your device, follow these instructions in reverse order.

This document was generated on 2022-11-23 03:24:44 PM (MST).

