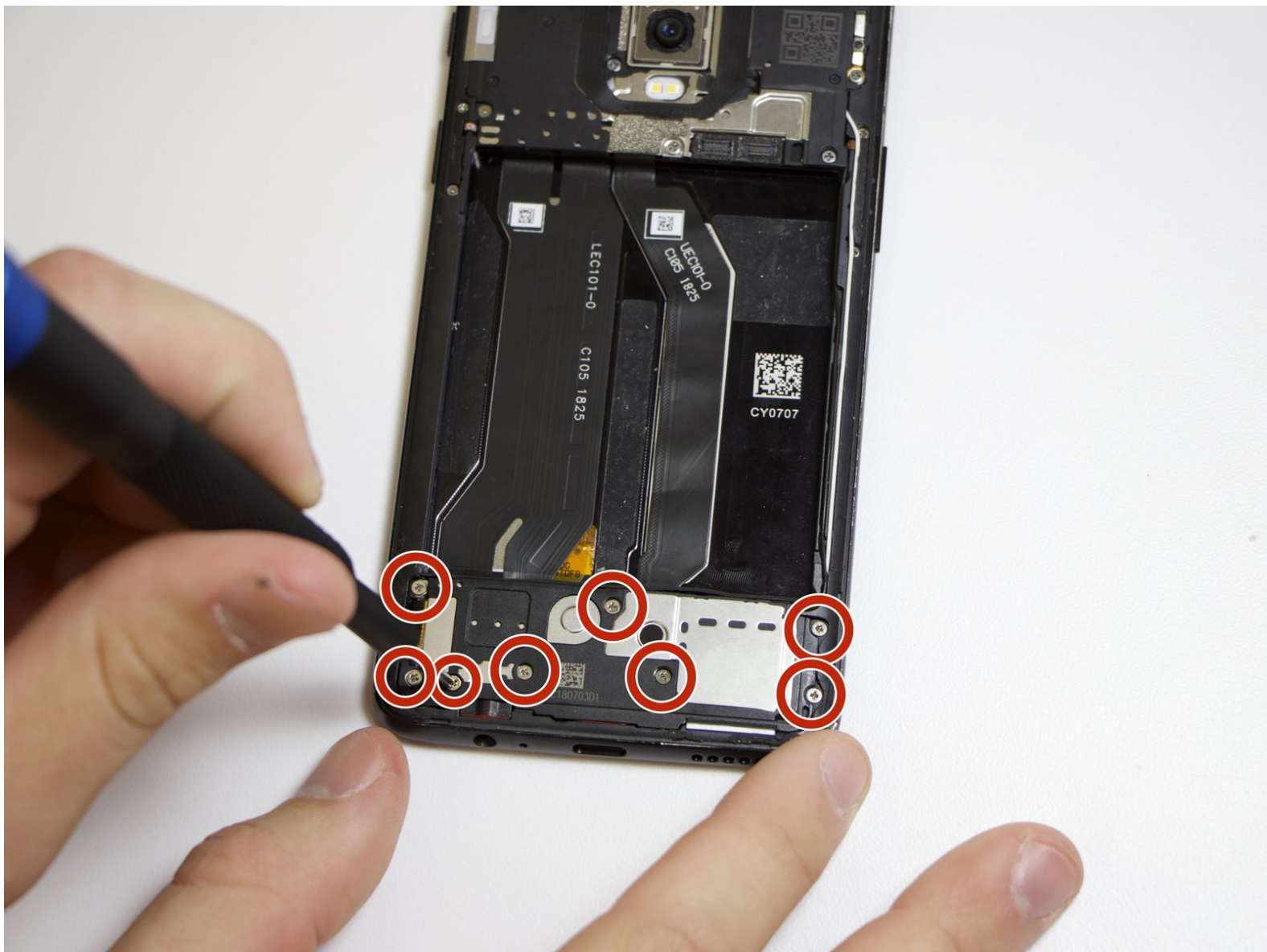




OnePlus 6 Lower Frame Replacement

This guide will show you how to remove the lower frame within the OnePlus 6.

Written By: Mickenzie Thompson



INTRODUCTION

If your OnePlus 6 is having issues with charging, clear audio from the headphone jack, or audio issues from the speaker, such as muffled noise, use this guide to gain access to the charger port, headphone jack, and the speaker.

Before taking action to remove the lower frame to repair any one of these issues, such as problems with the phone charging or audio distortion, make sure there is no debris pileup in any of the phone's components. Also, before using this guide make sure to take a look at the [troubleshooting page](#), sometimes charging and audio problems can be resolved without replacing parts within the phone.

The first step of this guide will require you to remove the back panel of the phone, which is made of glass, so be careful not to shatter it.

Before performing this guide, you should also make sure that your OnePlus 6 is powered down and no other power source is connected.



TOOLS:

- [Heat Gun](#) (1)
 - [iFixit Opening Picks \(Set of 6\)](#) (1)
 - [Tweezers](#) (1)
 - [Phillips #00 Screwdriver](#) (1)
-

Step 1 — Back Panel



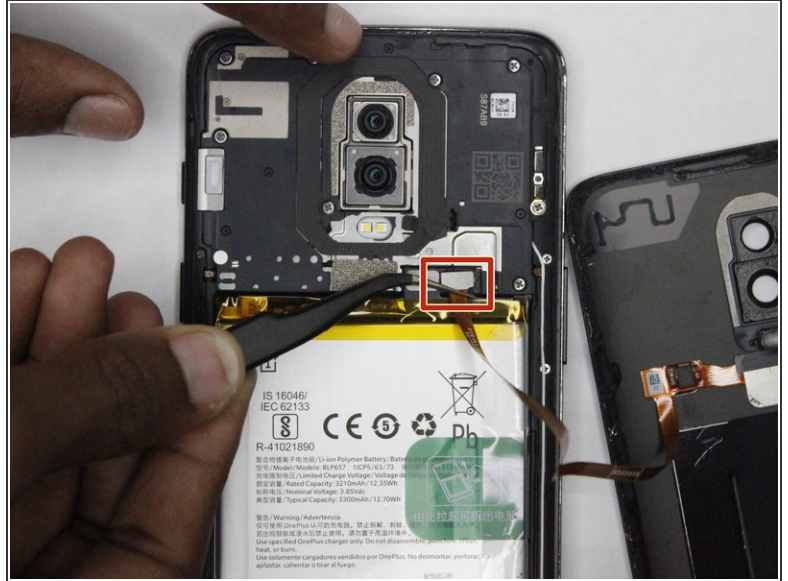
- Turn on the heat gun to a low heat and gently heat the curved edges on the back of the phone.
⚠ Be careful not to overheat or melt the plastic; heat guns can get out of hand quickly!
- Wedge the opening picks between the front and back panel and slide them around the perimeter to break the adhesive securing the back cover.
- Repeat until the back panel is fully released.

Step 2



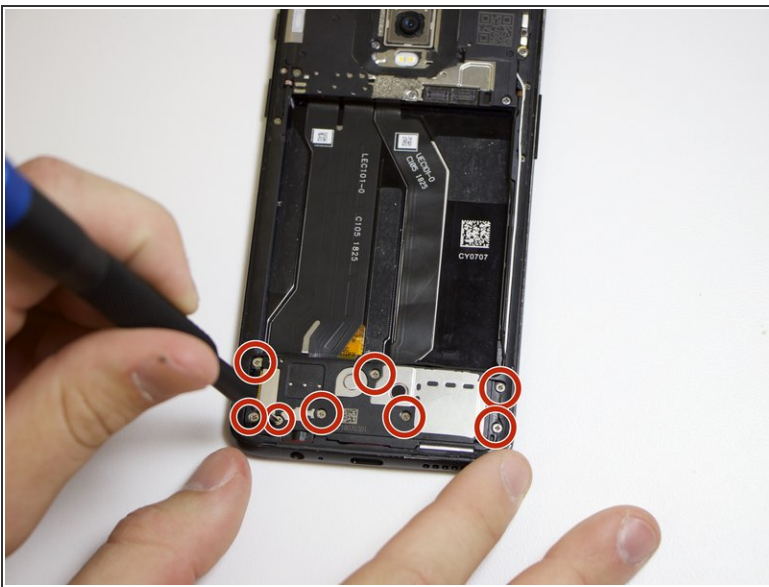
- Gently lift up the back panel, with care not to damage the fingerprint sensor ribbon cable.

Step 3



- Use a pair of tweezers to gently pull up on the red tab and disconnect the cable from the device.
- Completely remove the back panel from the device.

Step 4 — Lower Frame



- Using the Phillips #00 screwdriver, remove the eight 3 mm screws from the lower frame.
- Gently lift the lower panel up and out of the device.

To reassemble your device, follow these instructions in reverse order.