



Casio A158WA-1 Watch Circuit Board Replacement

This guide will show you how to replace a...

Written By: Valeria Pérez Irizarry



INTRODUCTION

This guide will show you how to replace a faulty Casio A158WA-1 watch circuit board. If your watch is not turning on, there is a possibility that the circuit board is damaged and needs to be replaced.

The circuit board allows electricity to flow from the battery (power source) to the LCD screen. If the circuit board is damaged, the watch will not turn on or display the time. A faulty circuit board will most likely have cracks, scratches, or bulges.

Before using this guide, test new batteries on the watch. If the battery is running low, the watch will not display correctly or turn on either.

TOOLS:

[Tweezers](#) (1)

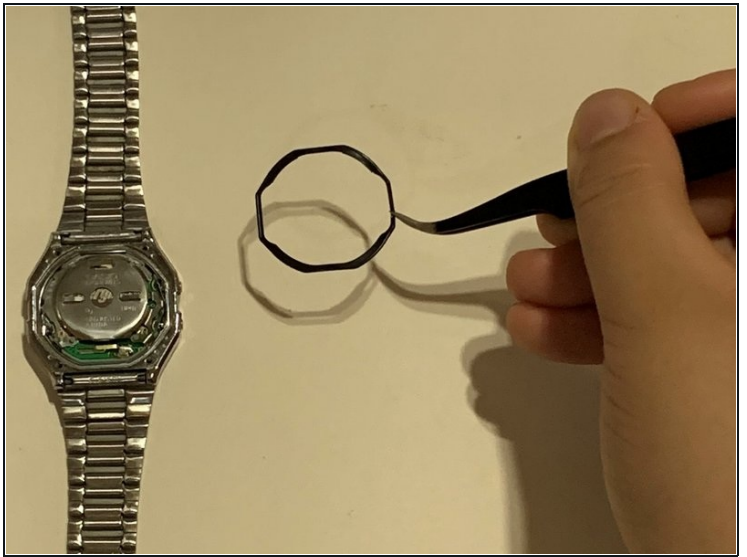
[Phillips #00 Screwdriver](#) (1)

Step 1 — Circuit Board



- Remove the four screws from the back of the watch using a Phillips #00 screwdriver.

Step 2



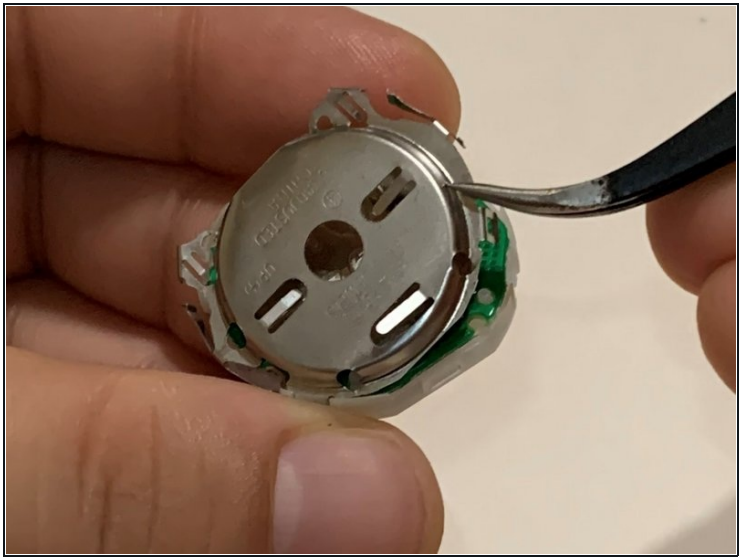
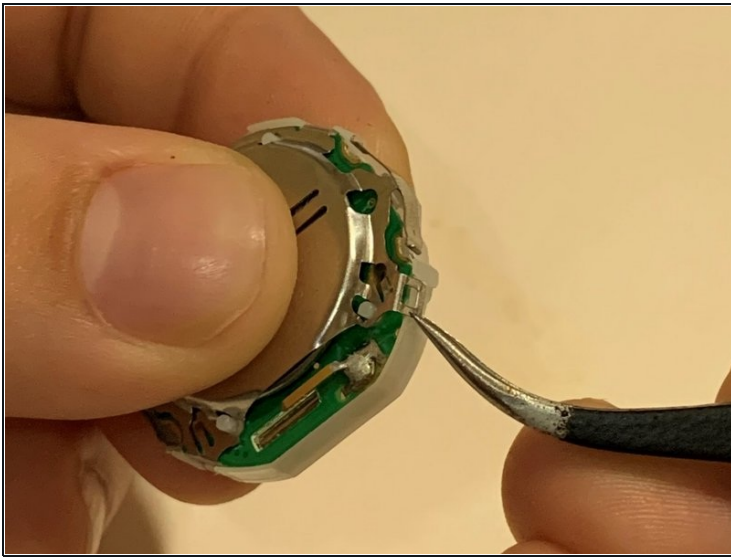
- Remove the back cover and the black rubber band with tweezers.

Step 3



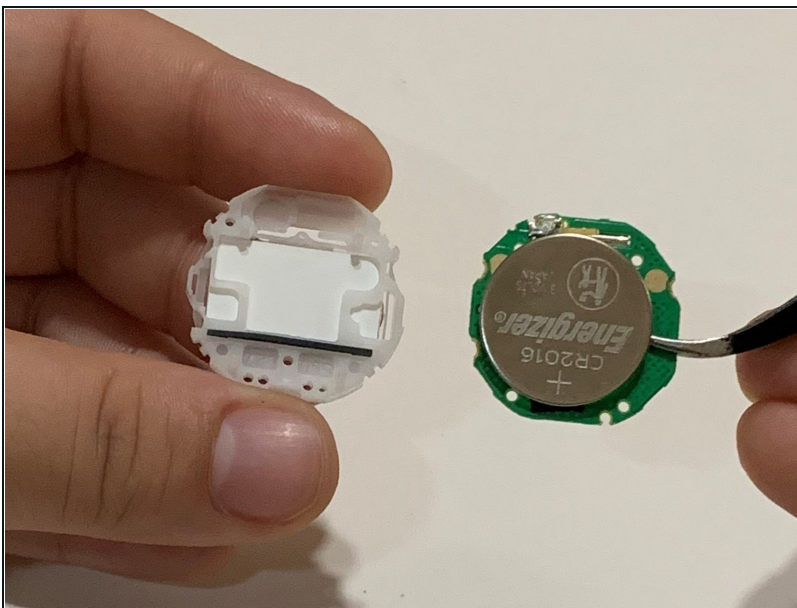
- Use a pair of tweezers to pull the small metal tab and remove the interior of the watch.

Step 4



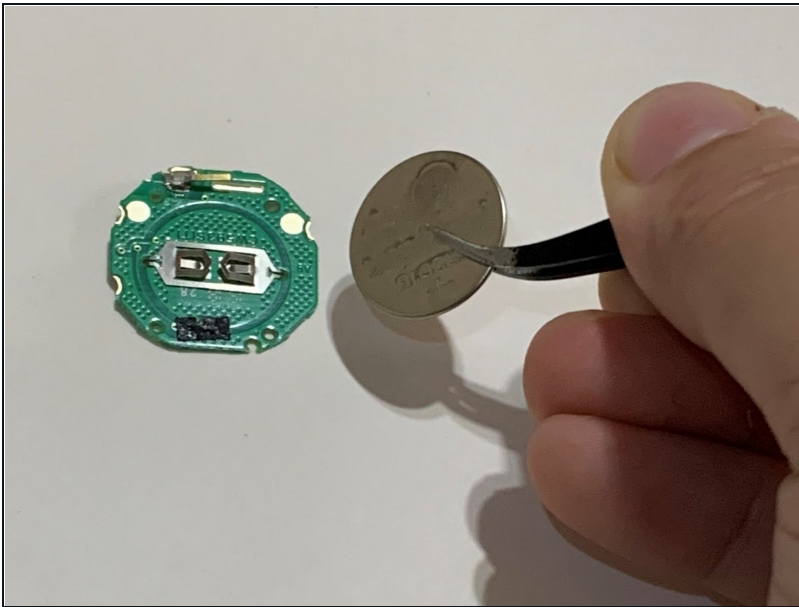
- Use a pair of tweezers to lift the metal clasps at each corner and remove the battery holder.

Step 5



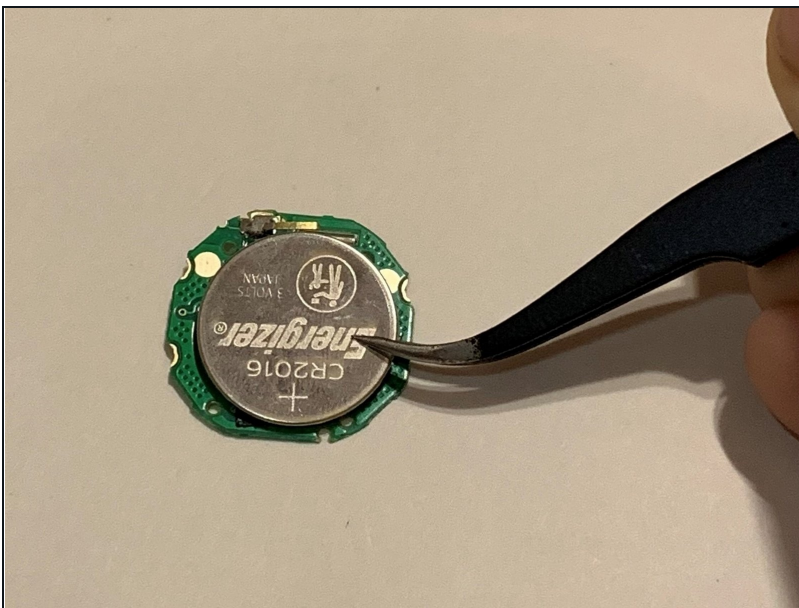
- Separate the LCD from the circuit board.

Step 6



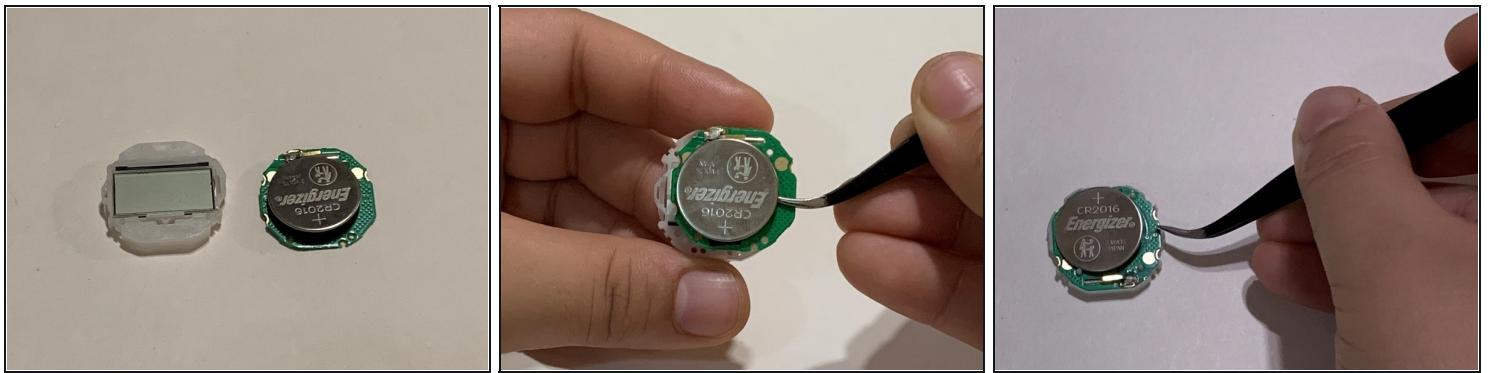
- ★ Remember the position of the battery for reassembly.
- Detach the battery from the circuit board.

Step 7



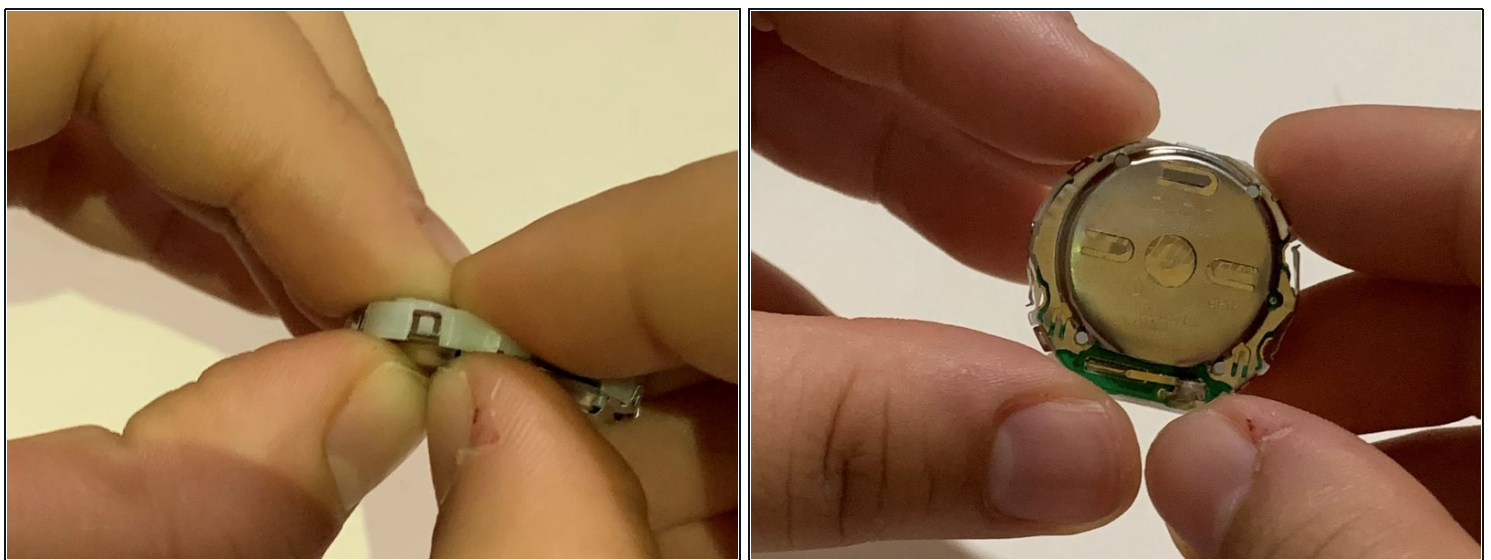
- Attach the battery to the new circuit board.

Step 8



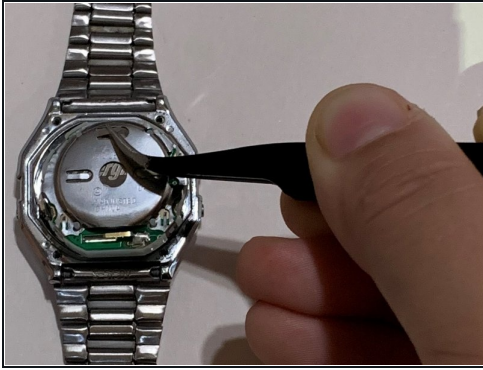
- Place the new circuit board behind the LCD.

Step 9



- Reattach the battery holder and push down on the clasps at each corner.

Step 10



- Place the interior of the watch inside of the shell.
 - Put the rubber band and the lid back in their original position.
-