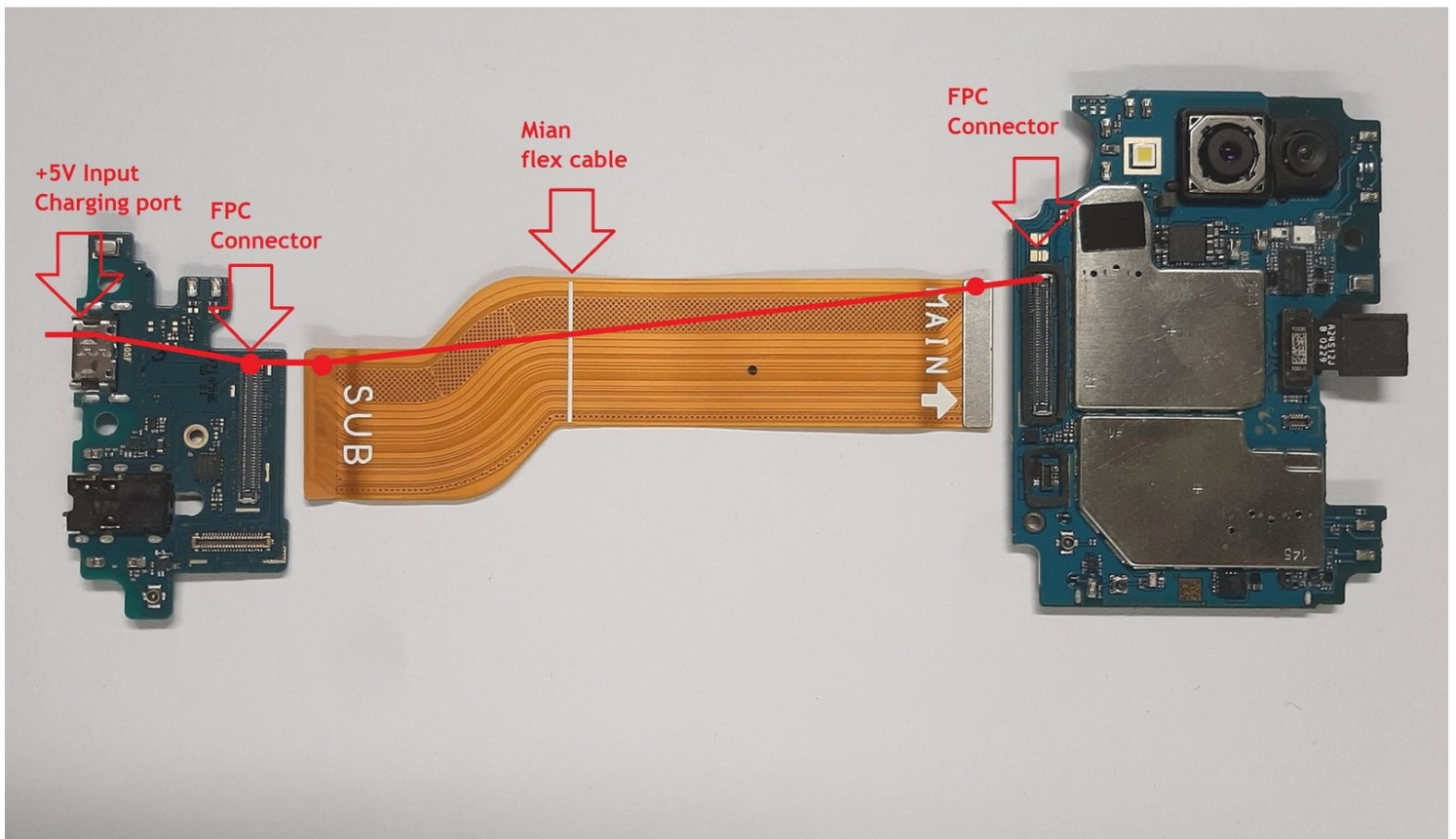




Diagnose A Samsung Galaxy A40 Charging Problem

This guide will help you diagnose the Samsung...

Written By: ZFix

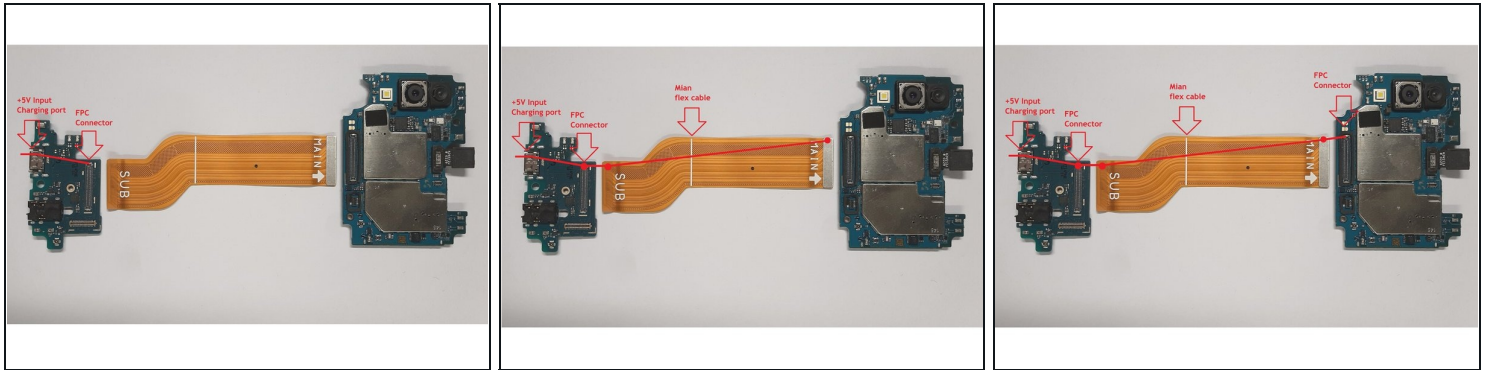


INTRODUCTION

This guide will help you diagnose the Samsung Galaxy A70, Samsung Galaxy A50, and the Samsung Galaxy A20. This guide might also work for other Samsung models.

[video: <https://youtu.be/Xvs7PFzbfOs>]

Step 1 — +5V line



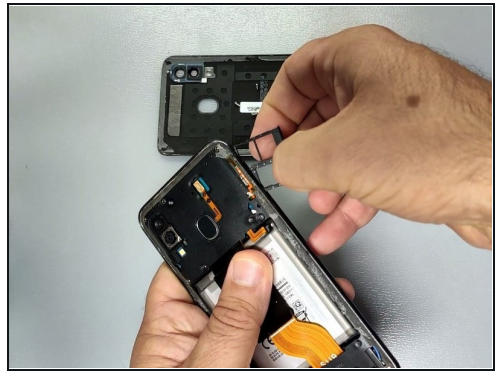
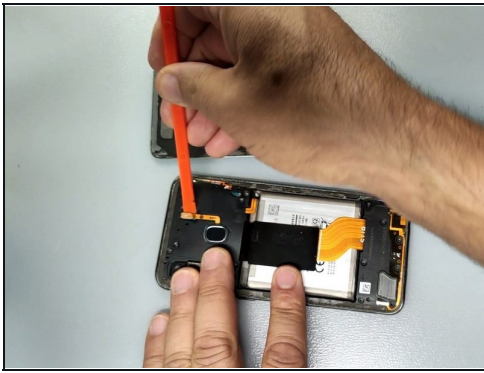
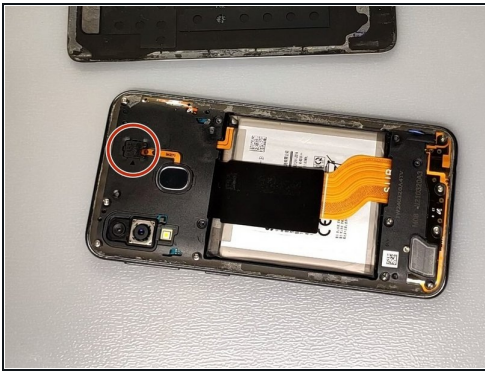
- This is the +5V line from the Charging port to the Motherboard.

Step 2 — Back cover removal.



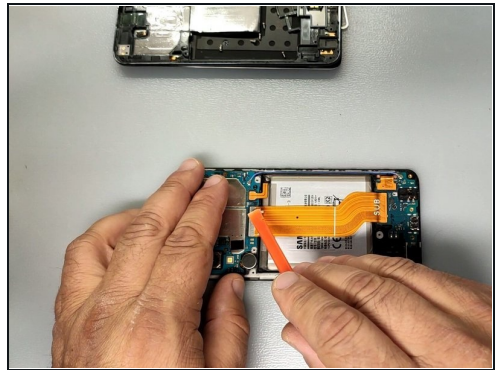
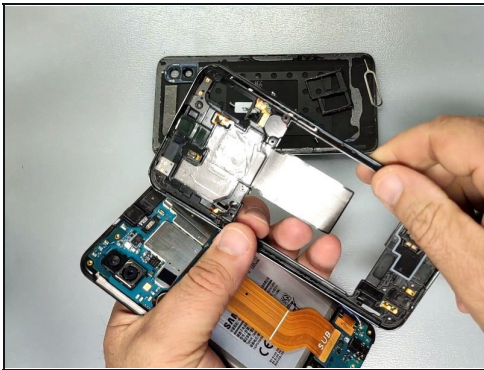
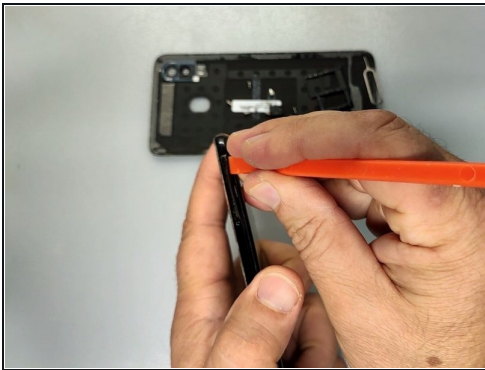
- Warm the device to soften the adhesive.
- Use Sanction cup, Plastic tools and isopropyl alcohol.
- Remove the silver Phillips screws from the middle frame.

Step 3 — Fingerprint sensor



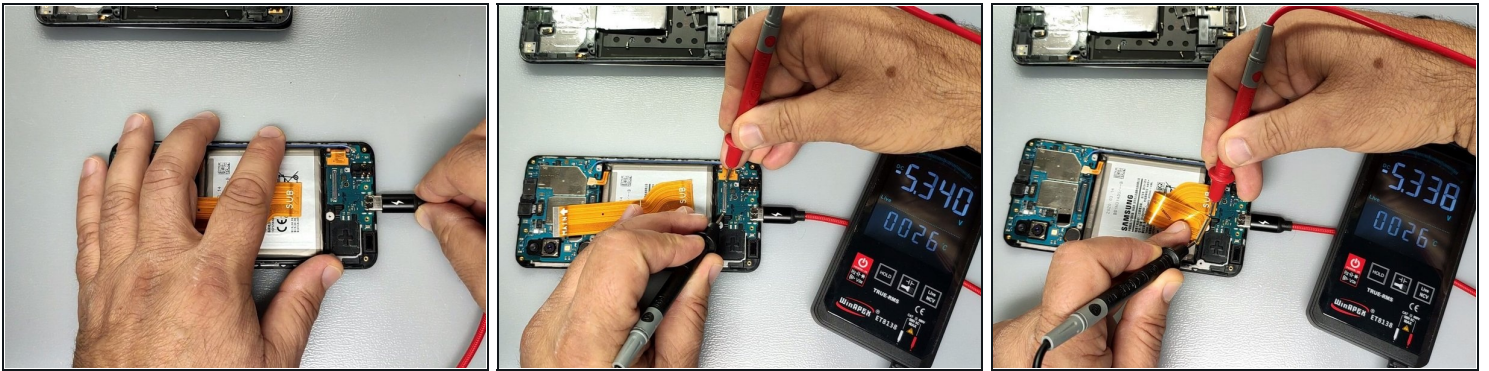
- Remove the plastic cap from the Fingerprint flex cable connector and disconnect the cable.
- Remove the SIM Tray.

Step 4 — Middle frame removal



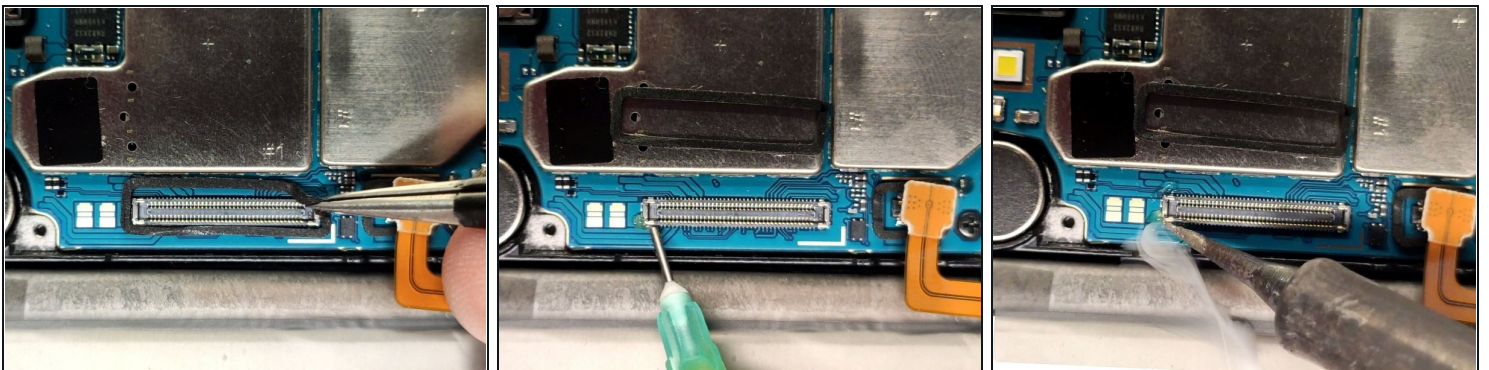
- "Use plastic tool to separate the middle frame. Start from the SIM Tray hole."
- First of all disconnect the battery.

Step 5 — Measurement



- Disconnect the Main flex cable and connect the charger.
- Use a multimeter to measure the voltages at the the large end pins of the FPC connector of the Charging board (See the second image)
 - If the reading is okay (~5V) continue with the next step, if not - change the Charging board.
- Attach the Main flex cable and measure the large end pins of the Main flex FPC connector - pic.3.
- If the reading is okay, continue with the next step, if not - change the Main flex cable.

Step 6



- Remove the adhesive rubber.
- Use some flux and soldering iron to re-solder the first pin of the Mother board FPC.

To reassemble your device, follow these instructions in reverse order.