



EVGA GeForce GTX 1080 FTW2 DT GAMING with iCX Cooler Fan Shroud Removal

The removal of the fan shroud to access the fans or for further disassembly

Written By: Wolphin





TOOLS:

- [1.5mm Hex Screwdriver](#) (1)
-

Step 1 — Remove Dust Caps



- If you have any dust caps over the HDMI or Display Port connections, remove them

Step 2 — Remove Back Screws



- Remove the 3 screws using a Phillips #1 Screwdriver (Red)
- Remove the 2 Standoffs using a 5mm socket

Step 3



- Remove top screw using a Phillips #0 screwdriver (Blue)
- Remove the bottom screw and nut using a Phillips #0 screwdriver. Will want to use a finger to hold the nut from spinning while releasing the screw.

Step 4 — Slide out the plate



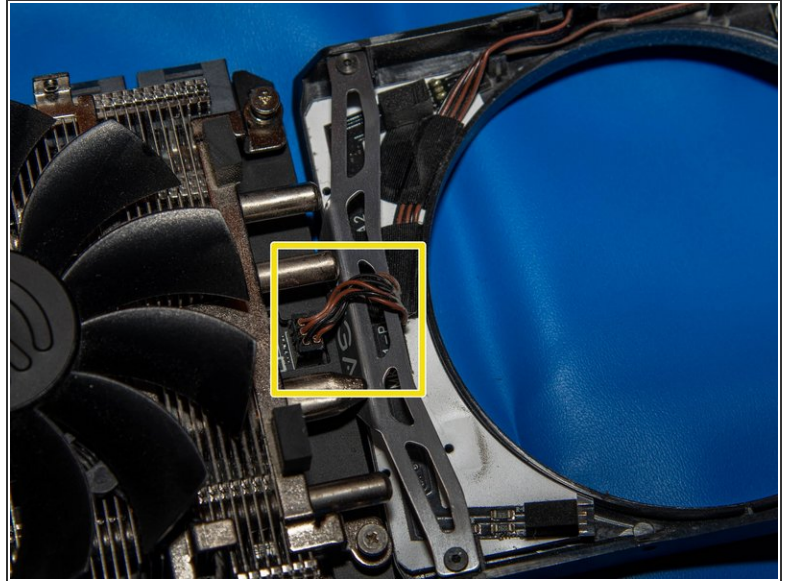
- Gently slide the plate out from between the back cover and the circuit board. It should come out without much force.
- If it doesn't want to budge, check that the right screw was removed from the top of the video card.

Step 5 — Remove 4 Screws



- Using the 1.5mm Hex, remove the 4 screws (one on each corner) to release the shroud
- Note: there is 4 screws on each corner plate, the other 3 screws do not need to be removed.

Step 6 — Open the shroud



- The shroud should be able to be lifted free easily, on the wiring harness for the lights.
- The connector for the harness is on the inside end end, nearest the power connectors.
- The connector can be disconnected to completely separate the shroud, or left connected if just needing access to the fans.

To reassemble your device, follow these instructions in reverse order.