



EVGA GeForce GTX 1080 FTW2 DT GAMING with iCX Cooler PCIe Video Card Fan Replacement

Replacing the fan in the iCX cooler

Written By: Wolphin



INTRODUCTION

This guide is for the replacement of the GPU fan on the video card. Replacing the other fan would be the same steps, just with the other fan assembly.



TOOLS:

- [5mm Allen Hex Socket](#) (1)
- [Phillips #0 Screwdriver](#) (1)
- [1.5mm Hex Screwdriver](#) (1)
- [Phillips #1 Screwdriver](#) (1)
- [ESD Safe Tweezers Blunt Nose](#) (1)



PARTS:

- [PLD10015B12H GPU Fan](#) (1)
95mm DC 12V 0.55A fan
4-pin wiring

Step 1 — Remove Dust Caps



- If you have any dust caps over the HDMI or Display Port connections, remove them

Step 2 — Remove Back Screws



- Remove the 3 screws using a Phillips #1 Screwdriver (Red)
- Remove the 2 Standoffs using a 5mm socket

Step 3



- Remove top screw using a Phillips #0 screwdriver (Blue)
- Remove the bottom screw and nut using a Phillips #0 screwdriver. Will want to use a finger to hold the nut from spinning while releasing the screw.

Step 4 — Slide out the plate



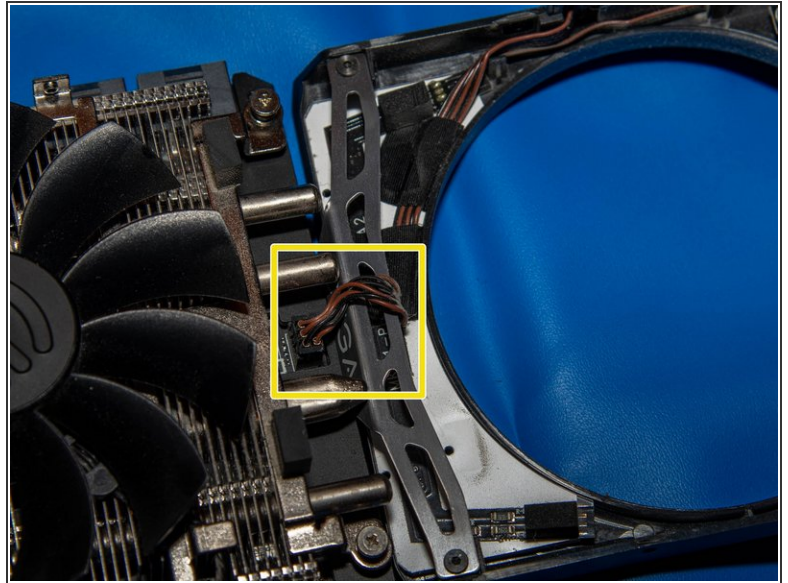
- Gently slide the plate out from between the back cover and the circuit board. It should come out without much force.
- If it doesn't want to budge, check that the right screw was removed from the top of the video card.

Step 5 — Remove 4 Screws



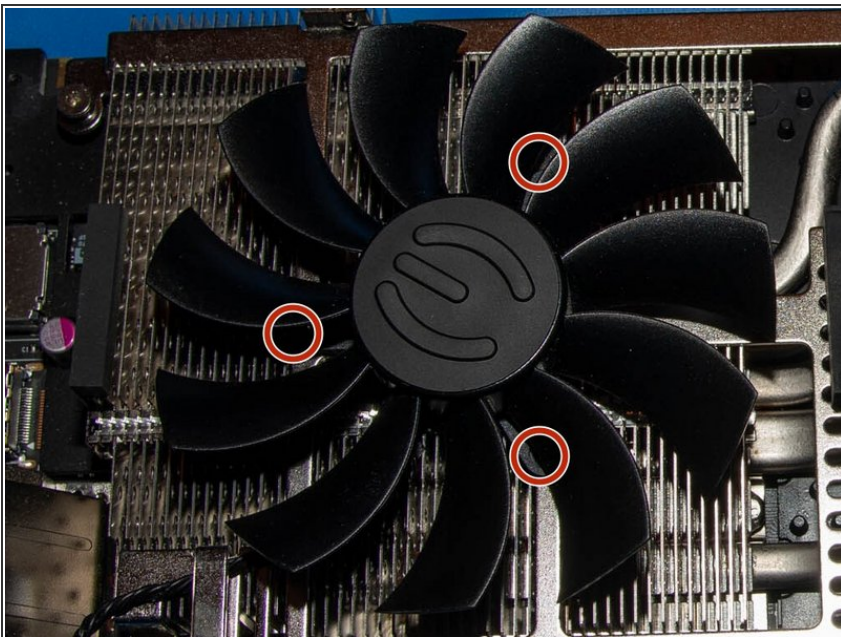
- Using the 1.5mm Hex, remove the 4 screws (one on each corner) to release the shroud
- Note: there is 4 screws on each corner plate, the other 3 screws do not need to be removed.

Step 6 — Open the shroud



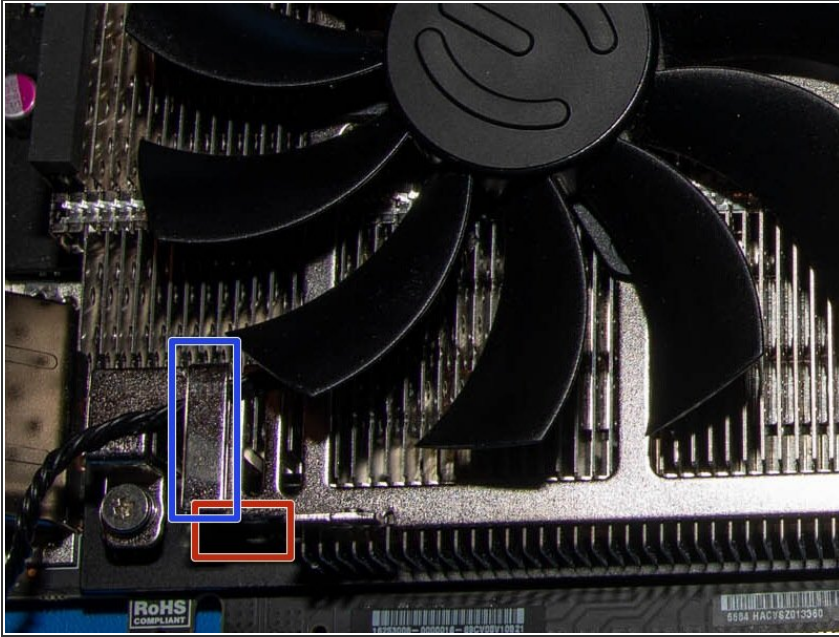
- The shroud should be able to be lifted free easily, on the wiring harness for the lights.
- The connector for the harness is on the inside end end, nearest the power connectors.
- The connector can be disconnected to completely separate the shroud, or left connected if just needing access to the fans.

Step 7 — Remove the 3 screws



- Using the #1 Phillips Screwdriver, reach between the fins to unscrew the 3 screws holding the fan to the heatsink.

Step 8 — Detach the wiring harness



- The wiring harness goes under the Blue clip and pulling the wire down will allow it to come free.
- The Red box is where the connector is located on the circuit board.
- Use the Tweezers to gently disconnect the connector.

Step 9 — Install new fan



- Installing the new fan, I found it easier to connect the wiring first, then the fan itself
- Connect the connector (the keying points away from you)
- Seat the cable under the metal clip
- Screw in the 3 screws for the fan
 - Loosely screw in all 3 screw before screwing them down tight.
 - Careful to not damage the fan blade, as that would cause premature wear and excess noise.

To reassemble your device, follow these instructions in reverse order.