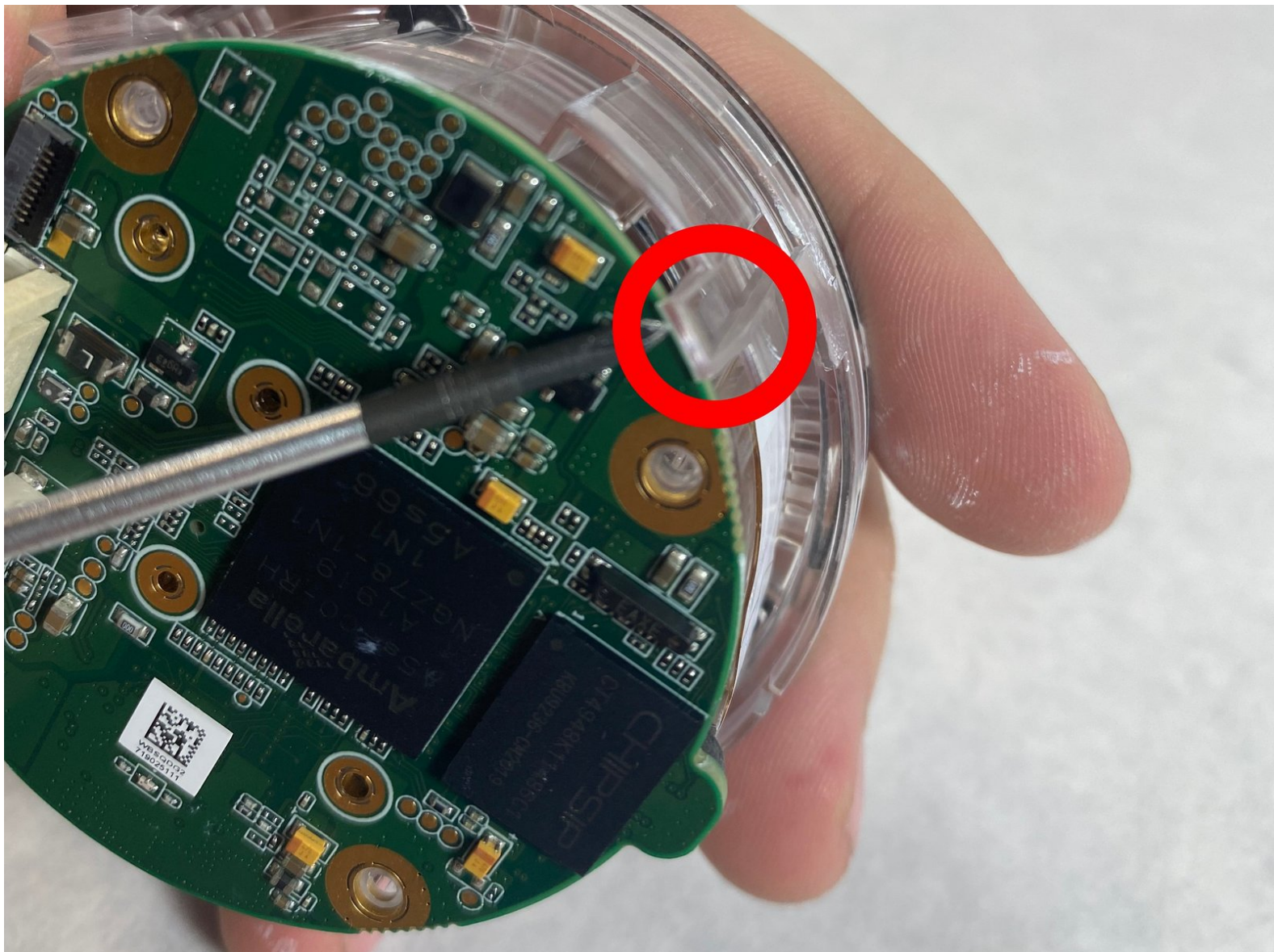




Nest Cam Outdoor S Motherboard Replacement

Replacement for Motherboard for the Google Nest Cam Outdoor S

Written By: Skylar DeVoe

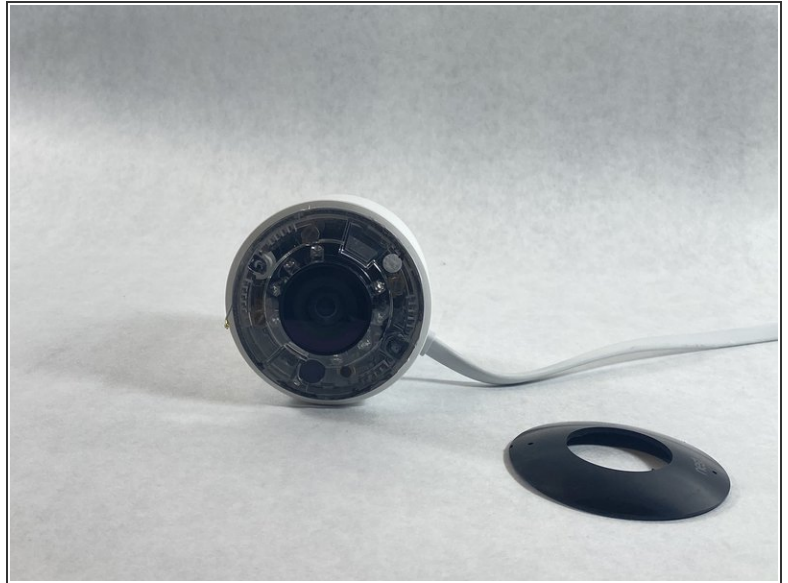




TOOLS:

- [Essential Electronics Toolkit](#) (1)
-

Step 1 — Plastic Camera Cover



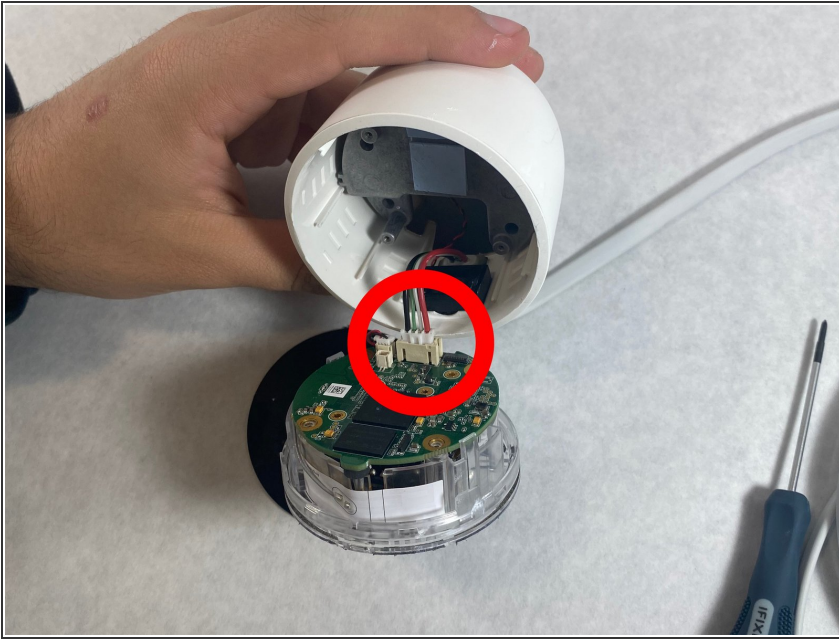
- Wedge a spudger between the black front panel and the white outer shell.
- Slide the spudger around the edge of the panel to pop it off.

Step 2



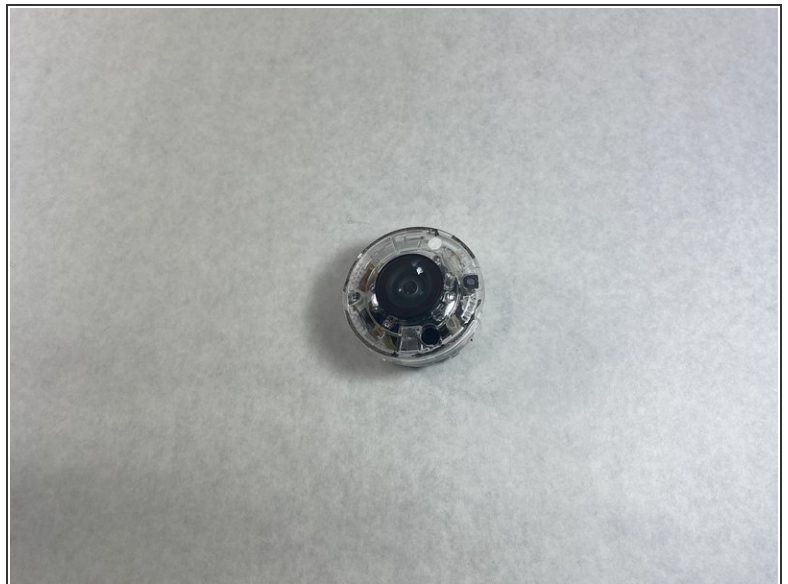
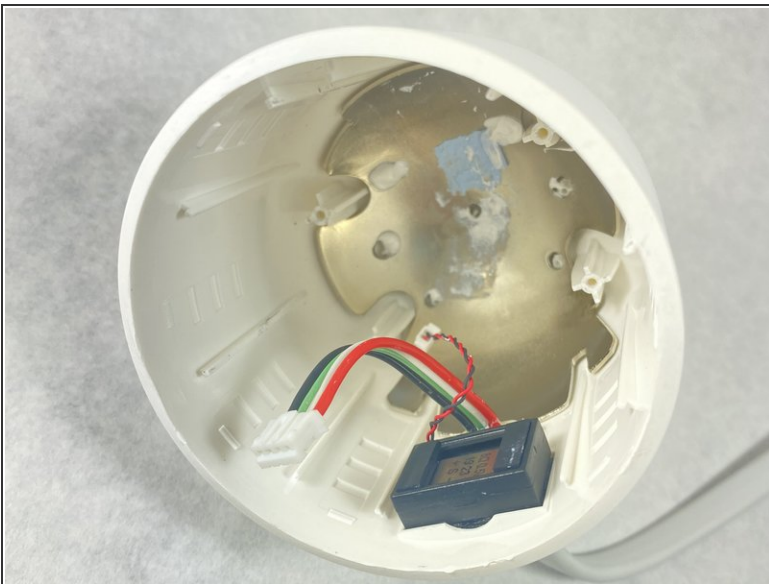
- Remove the four small screws from the plastic camera cover.

Step 3



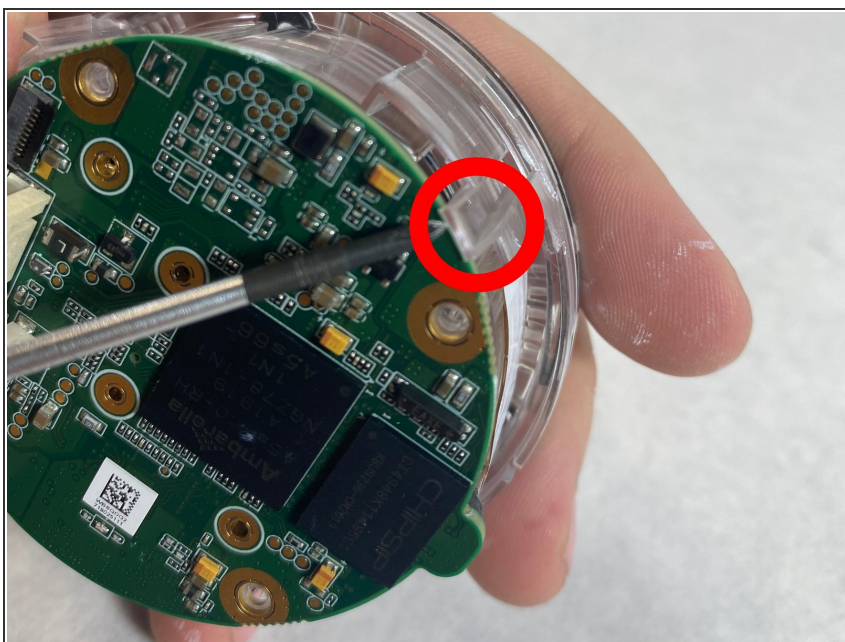
- Disconnect the microphone cable to separate the motherboard from the main camera unit.

Step 4



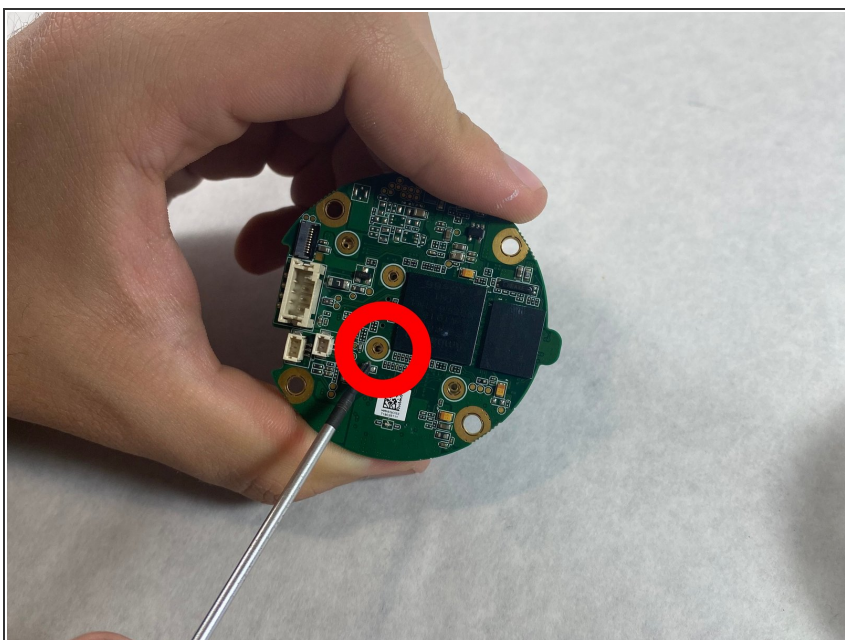
- Remove the plastic camera cover from the device.

Step 5 — Motherboard



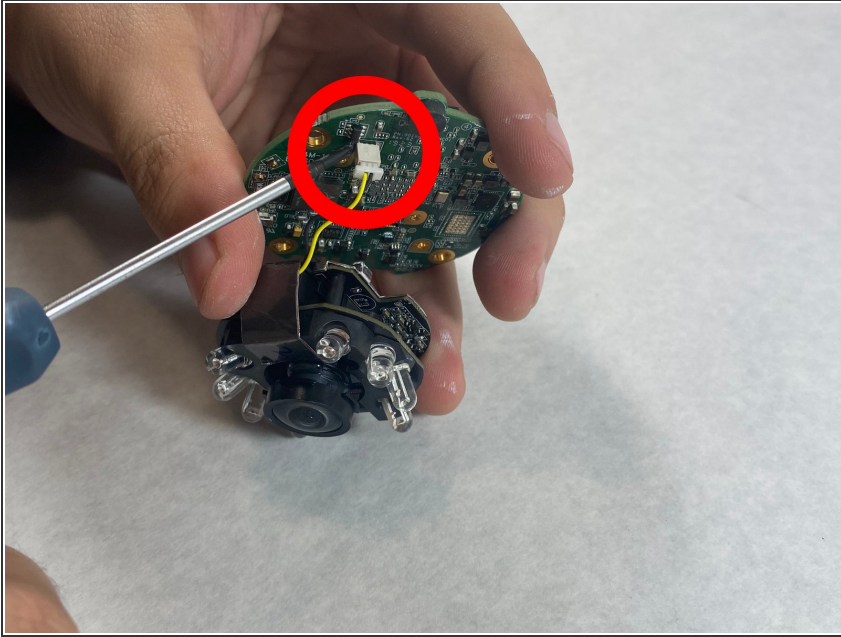
- Pry the plastic cover away from the motherboard at the plastic clips using a spudger.

Step 6



- Remove the four mounting screws from the motherboard.

Step 7



- Disconnect the yellow camera cable from the motherboard.
- Remove the motherboard from the device.

To reassemble your device, follow these instructions in reverse order.