



Panasonic Lumix DMC-ZS3 Lens Replacement

If your Panasonic Lumix DMC-ZS3 is producing...

Written By: Kellen Ericson



INTRODUCTION

If your Panasonic Lumix DMC-ZS3 is producing fuzzy, blurry, flared, or otherwise degraded images, it may have a broken or damaged lens. While a slightly damage or smudged lens might result in a minor reduction in photo and video quality, a severely damaged or broken lens may need to be replaced altogether.

Lenses control the amount of light that enters the camera. The optical elements inside focus the light into a focal point, and if the lens is damaged or broken, the light cannot be properly directed to the camera's sensor, resulting in images that may look blurry or have excessive lens flare. In that case, the lens should be replaced.

Before beginning, be sure the device is not attached to any external power sources and power it down completely.

TOOLS:

Phillips #00 Screwdriver (1)

Spudger (1)

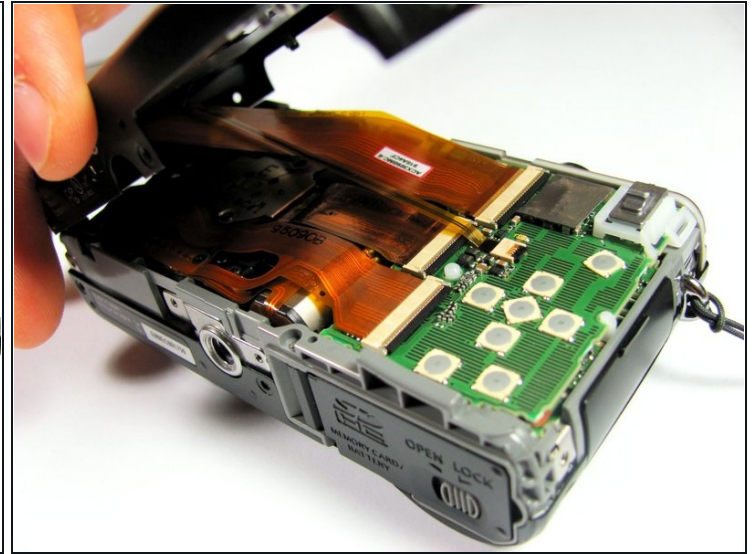
Step 1 — Back Cover



- Remove the following eleven screws securing the covers to the ZS3
 - Eleven 3 mm Phillips screws

 Using too much pressure when removing the screws may strip the screws and complicate screw removal at a later time.

Step 2



- Use the flat end of a spudger to pry apart the back cover from the rest of the unit as shown.

⚠ Be sure to carefully and slowly lift the back cover. Forcefully lifting the back cover and fully separating it at this point may ruin internal connections.

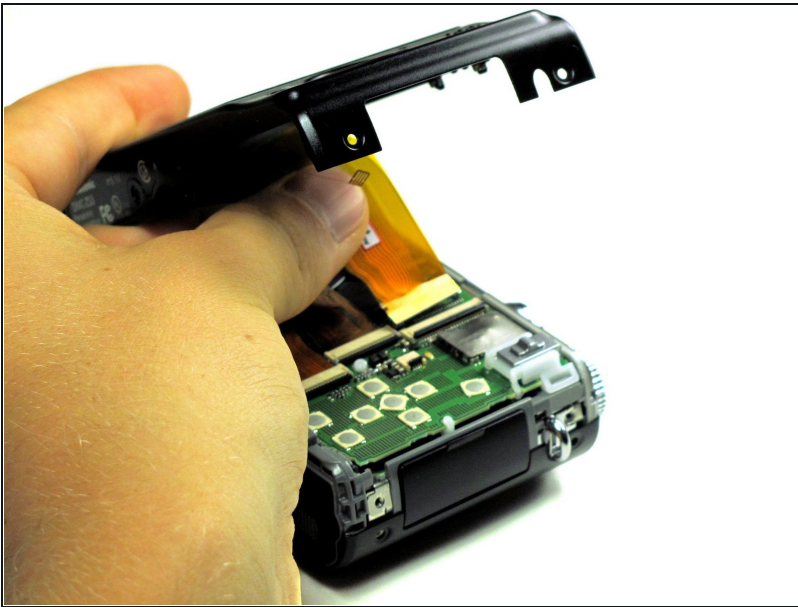
Step 3



- Using your fingernail or a spudger, flip up the ZIF locking flap on the two LCD ribbon cable sockets that connect the back cover to the rest of the unit.

⚠ Be sure you are opening the locking tab, not pulling against the socket mounted to the board.

Step 4



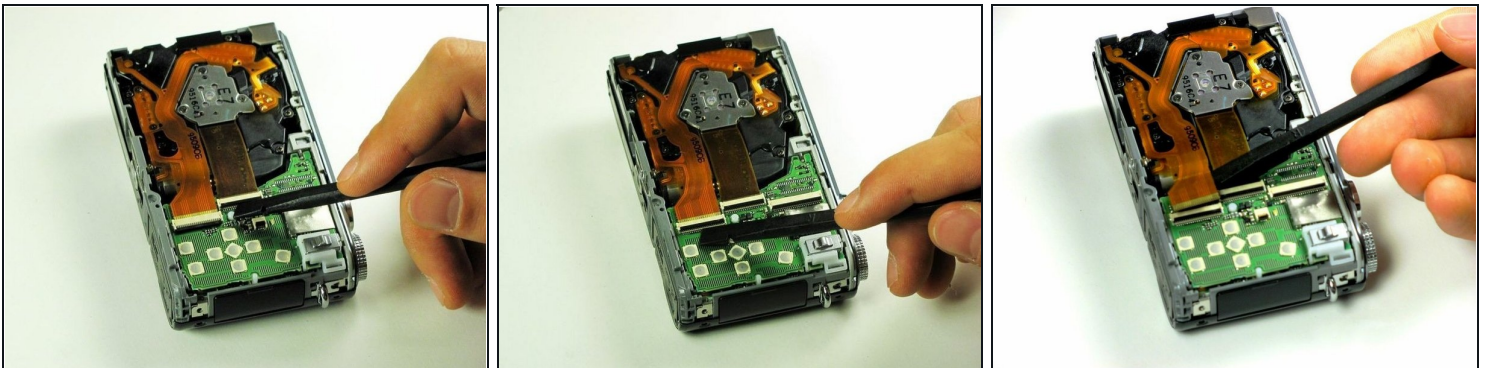
- Remove the two LCD board ribbon cables out of their sockets.

Step 5 — Lens



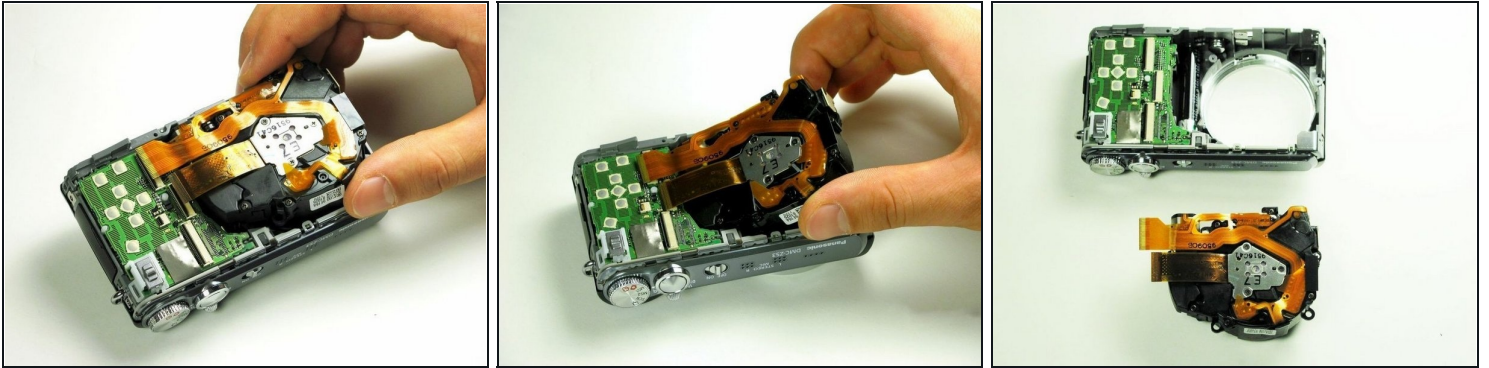
- Remove the three 3 mm black screws that surround the lens using a Phillips #00 screwdriver.

Step 6



- Flip up the locking flaps on the two LCD ribbon cable sockets with the spudger.
 - ① The LCD ribbon cables connect the back cover to the rest of the unit.
- Use the spudger to disconnect the LCD ribbons.

Step 7



- Use your fingers or a spudger to gently remove the lens mechanism from the rest of the camera.
⚠ Excessive force may damage the camera. Be sure to lift the lens slowly and carefully to avoid damage to other parts.
 - Unlock lens mechanism located on the bottom of the device using your fingers.
-

To reassemble your device, follow these instructions in reverse order.