



How to enter maintenance mode

Brother DCP-J4110DW, MFC-J2310 -J2510 -J4310DW -J4410DW -J4510DW -J4610DW -
J4710DW maintenance mode

Written By: Sebastian



INTRODUCTION

Maintenance mode provides useful functions for diagnosis if you are having troubles with your printer.

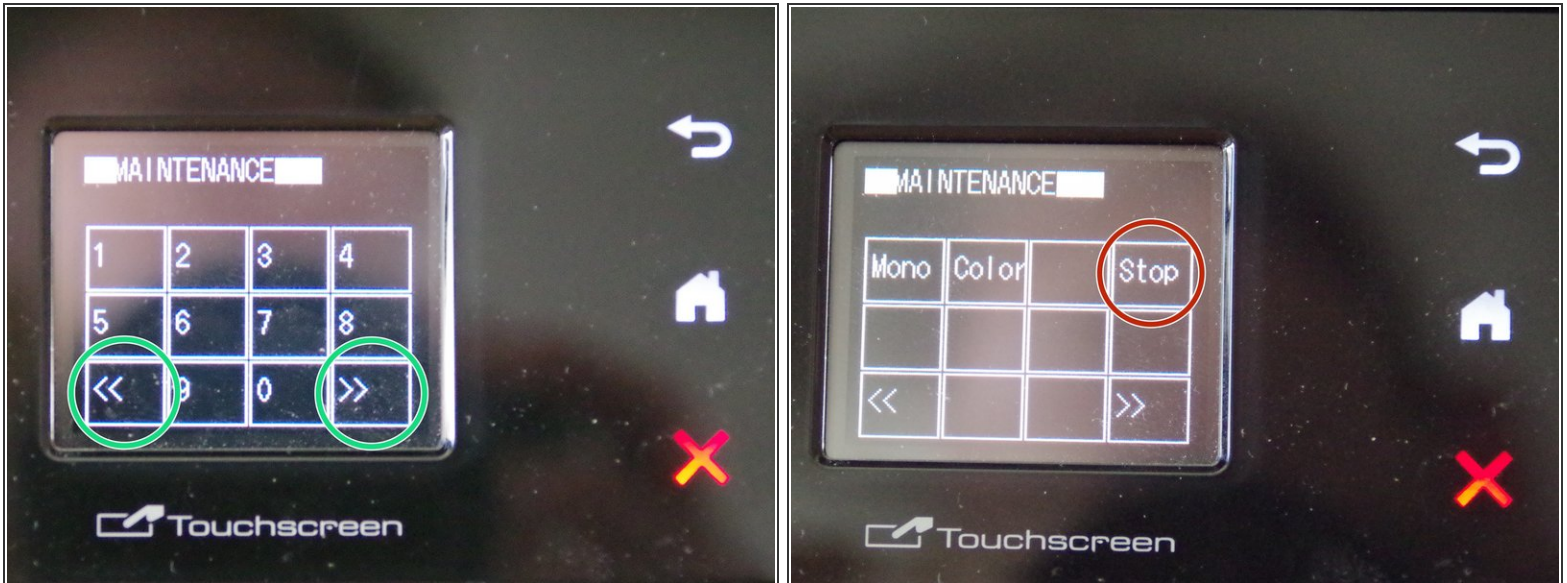
This guide shows how to enter maintenance mode on a Brother DCP-J4110DW printer. As the models MFC-J2310/J2510 as well as MFC-J4310DW/J4410DW/J4510DW/J4610DW and J4710DW are similar, the guide should also work for these models.

Step 1 — Enter maintenance mode



- Power on your printer.
- Hold the home button until the display shows Serial No., ROM version and print page count. Then press and hold the lowermost (empty) space of this screen until some numerical keys appear.
- Navigate through the keyboard by the << and >> keys (marked green) and press *, 2, 8, 6 and 4 in this order. A beep occurs and the display shows MAINTENANCE.

Step 2 — Navigating inside maintenance mode



- Navigate through the keyboard using the << and >> keys (marked green). The numerical keys can be used to enter a two-digit number referring a certain maintenance mode, e.g. a test of sensors can be accessed by pressing 3 and then 2 (maintenance mode 32). Entered numbers will not show up on the display.
- For a complete overview over all modes and functions, refer to the attached [service manual](#), chapter 5 (overview: section 5.1.2).
- For more information on the worker switch (WSW) settings (maintenance mode 10), refer to the featured [reference of worker switch settings](#).
- Single maintenance modes can usually be exited by pressing the Stop key (marked red).
- In the main menu of the maintenance mode, enter 99 to exit maintenance mode.