



Nintendo GameCube Motherboard Replacement

This guide will teach you how to remove the...

Written By: mwabisson



INTRODUCTION

This guide will teach you how to remove the existing GameCube motherboard and replace it with a new one.

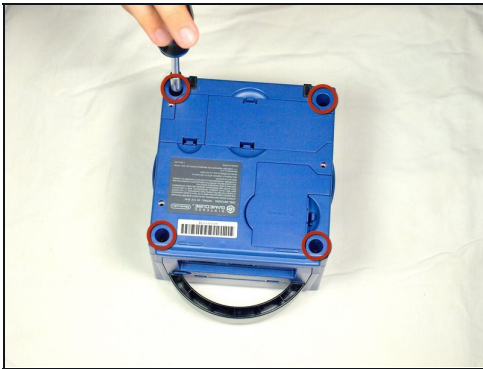
TOOLS:

Gamebit 4.5mm (1)

Phillips #1 Screwdriver (1)

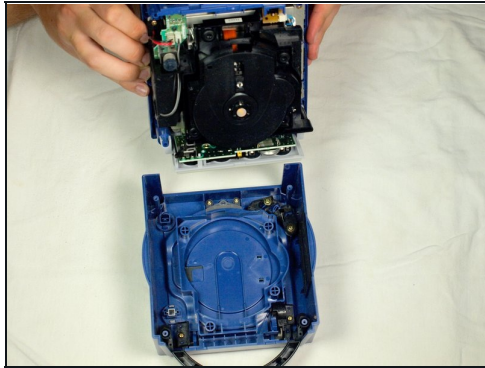
Phillips #2 Screwdriver (1)

Step 1 — Top Case



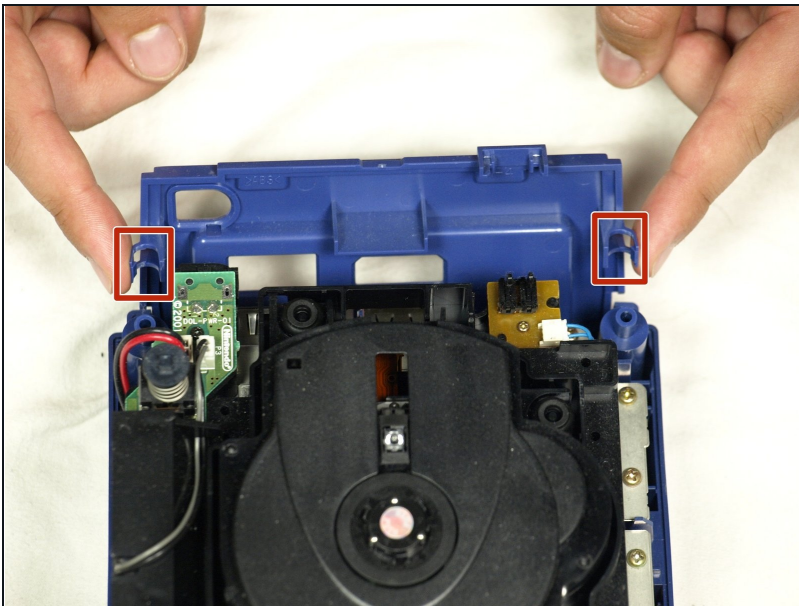
- Turn over the Gamecube so that the bottom side is facing up.
- Use the 4.5 mm Gamebit screwdriver to remove all four screws.

Step 2



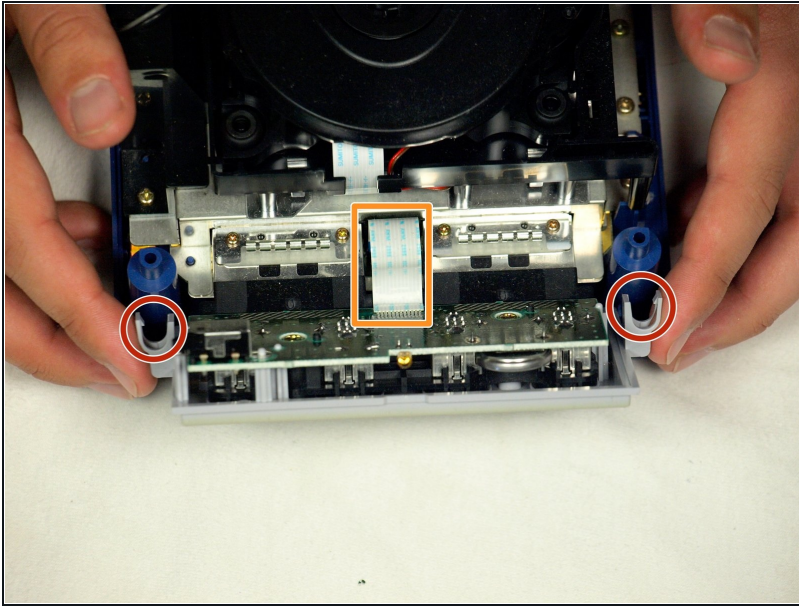
- With the bottom side of the GameCube facing upward and the screws removed, carefully pull the outer shell of the unit away from the top half.
- Move the GameCube so that the inside is facing upwards.

Step 3 — Removing the back panel



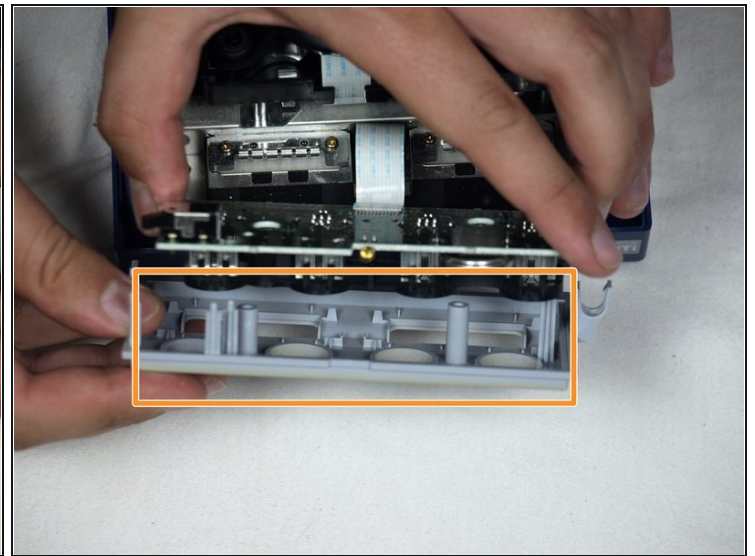
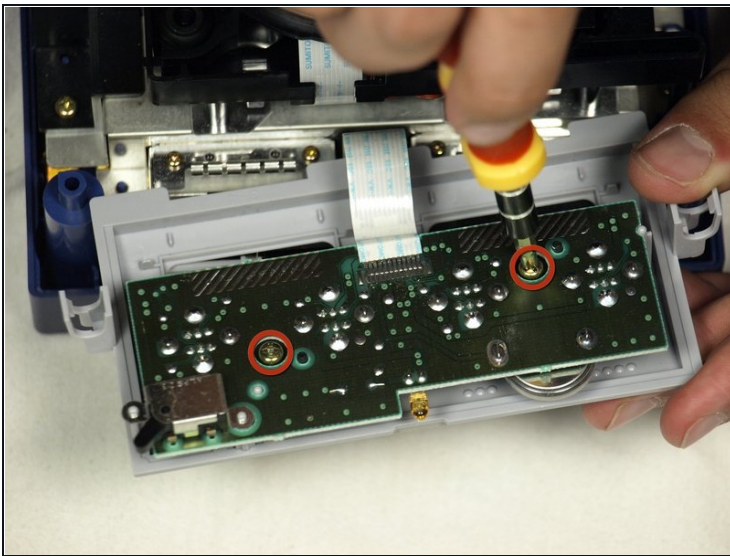
- Gently press down on the clips located on either side of the back panel.
- Carefully remove the back panel from the GameCube.

Step 4



- Unclip the controller ports at the front of the unit.
⚠ A ribbon cable (outlined in orange) is still attached to the unit. **Do not disconnect this cable.**
- ☑ Controller ports are where the controllers plug into the game console, and are a half circular shape.

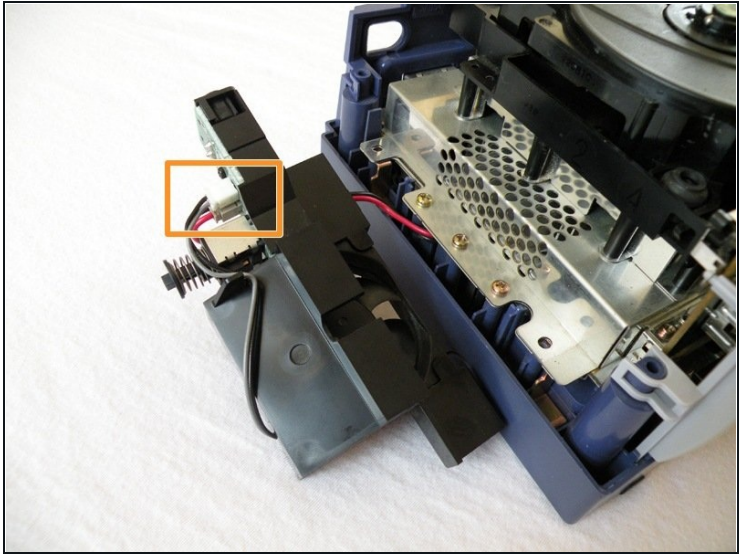
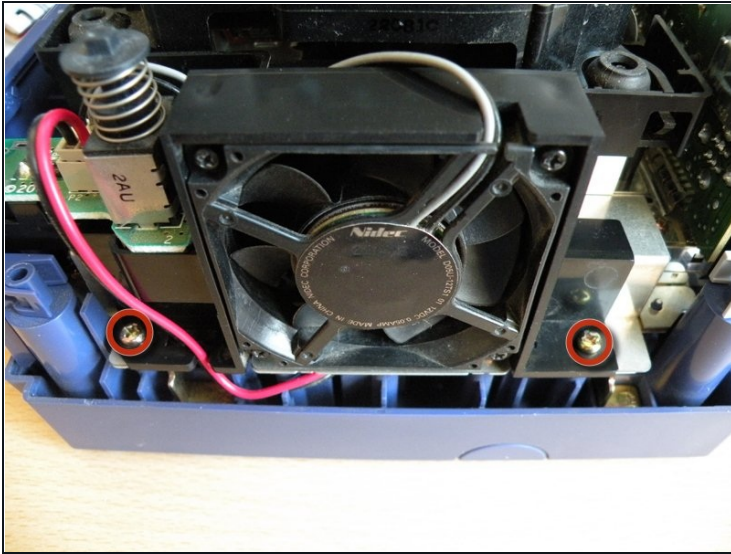
Step 5 — Separate the casing



ⓘ This step may not be necessary depending on your end goal

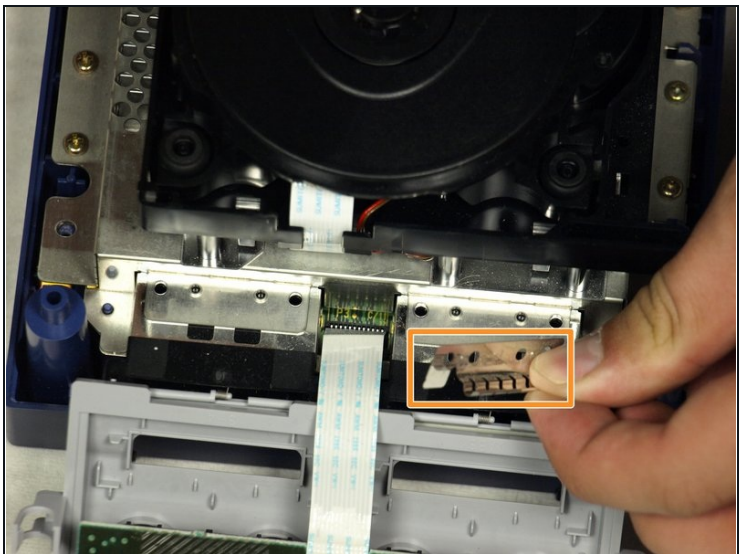
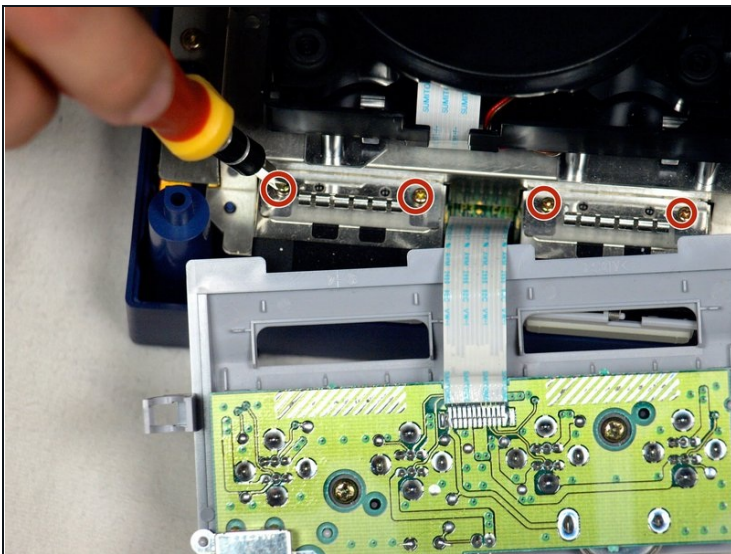
- Use a Phillips #2 screwdriver to remove the two screws on the back of the control port.
- Carefully separate the gray outer casing of the control port and the circuit board.

Step 6 — Remove Nintendo GameCube Optical Drive Assembly



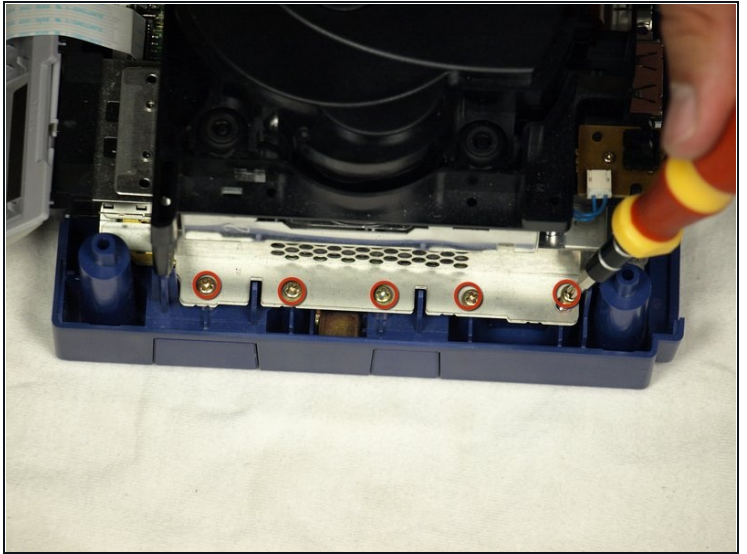
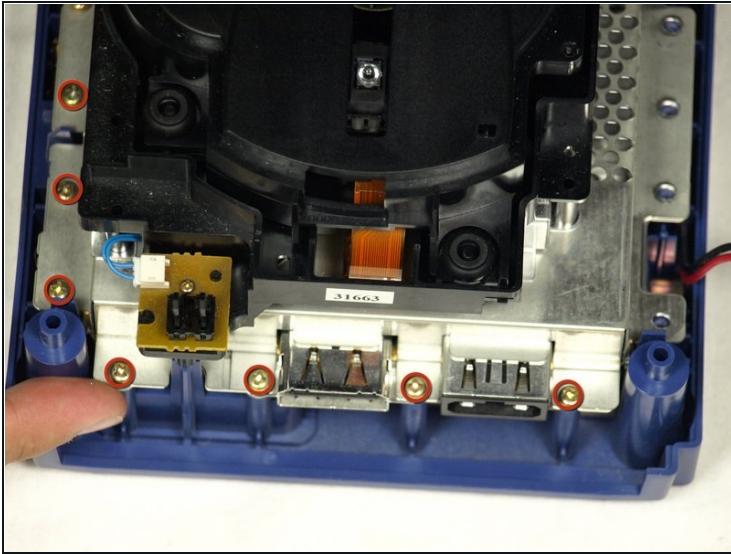
- The left side of the unit contains the cooling fan and its housing.
- Carefully remove the two screws attaching the cooling fan housing to the unit.
⚠ Do not detach the red and black cooling fan wire from the main unit. Boxed in orange.

Step 7



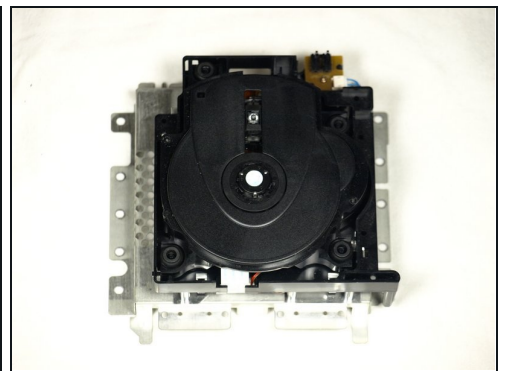
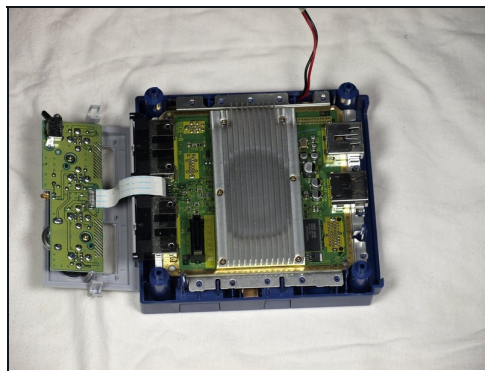
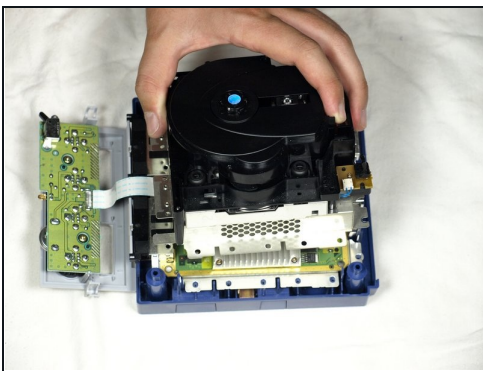
- Remove the four Phillips #1 screws retaining the ground springs.
- Carefully remove the ground springs from the main unit.

Step 8



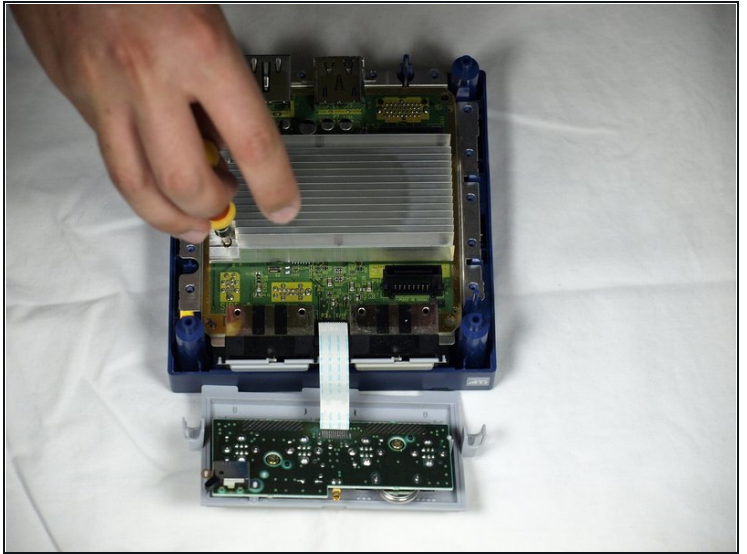
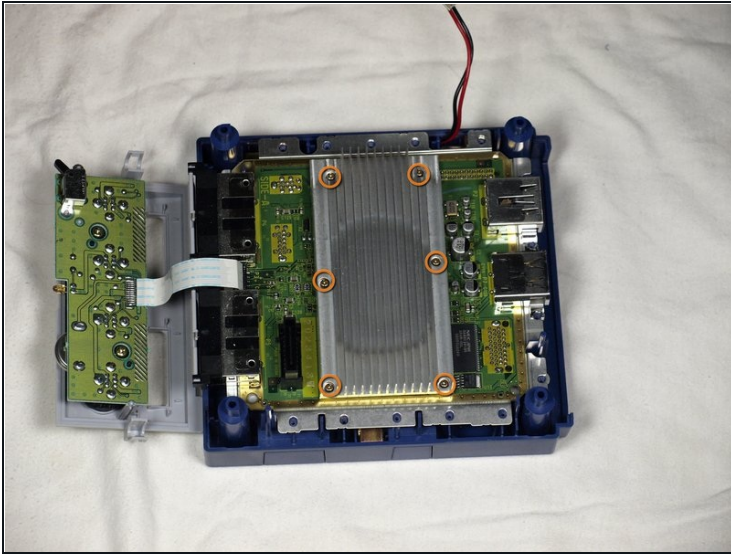
- The optical drive is secured to a metal plate.
- Using a Phillips #2 screwdriver, unscrew the twelve screws that are around the outer edge of the optical drive.

Step 9 — Remove the assembly



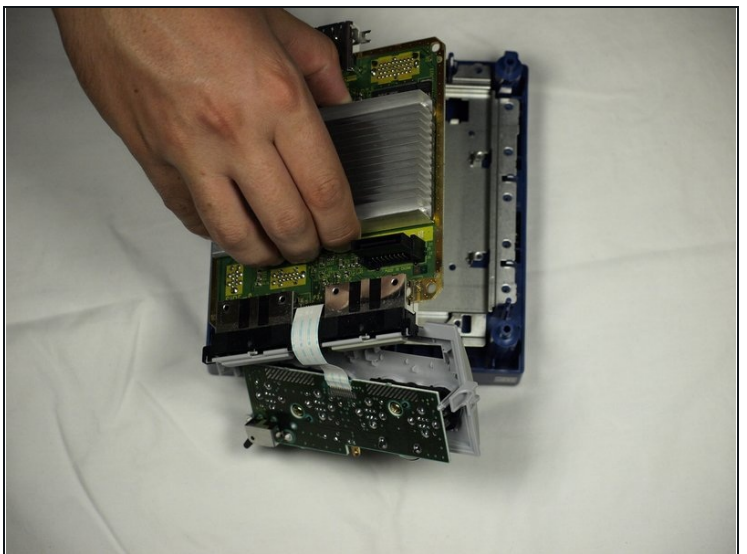
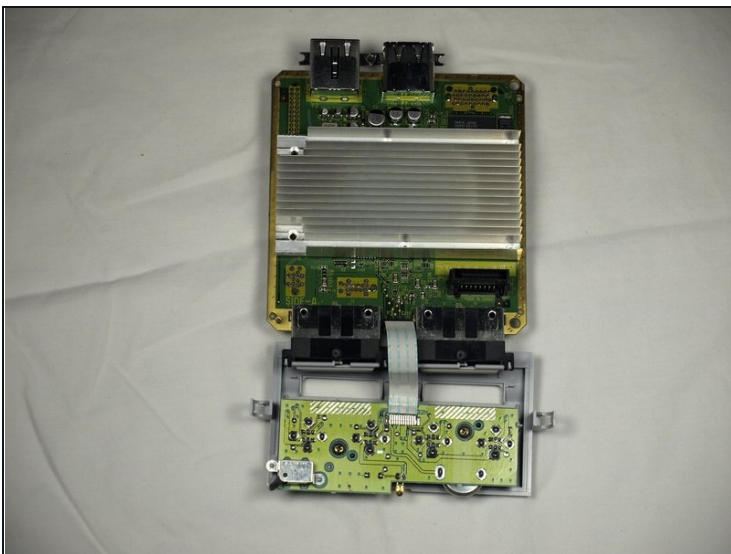
- Carefully separate the optical drive assembly from the rest of the GameCube unit.
- The optical drive assembly is secured to the motherboard underneath by a slot; some force may be required to carefully free the assembly.
- The metal plate and the actual optical drive will remain attached.

Step 10 — Motherboard



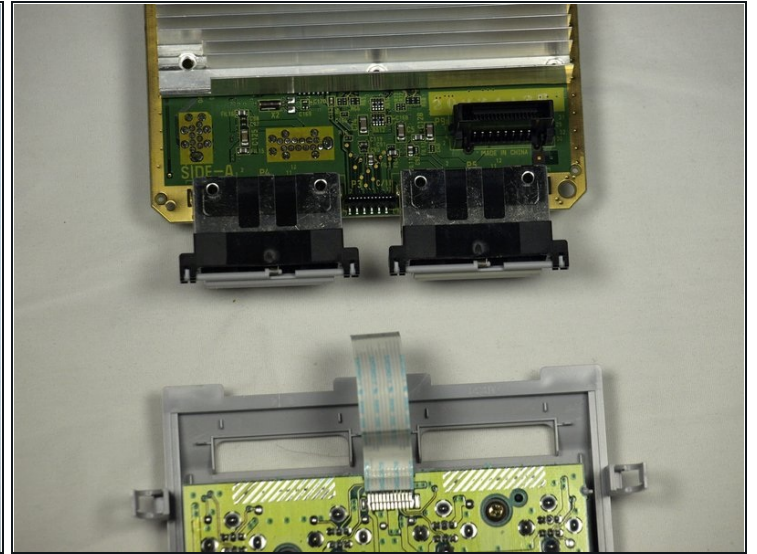
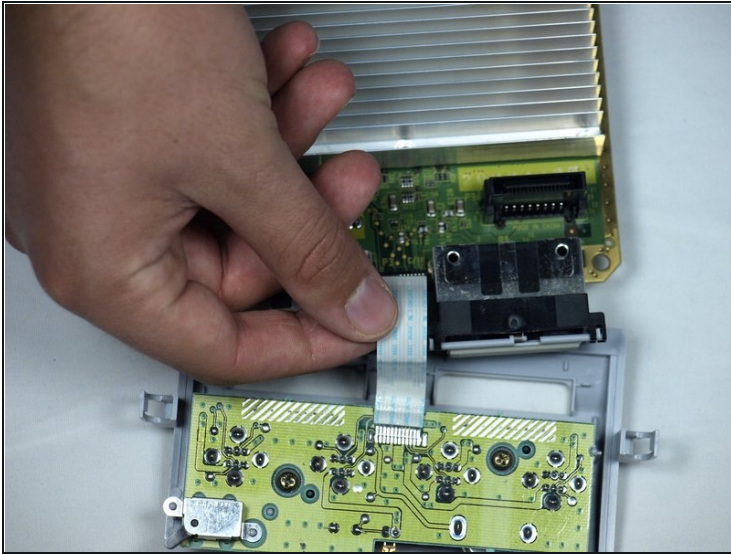
- With the Optical Drive Assembly removed, your GameCube should now look like this.
- Remove the 6 screws (circled in orange) on the heat sink using a #1 Phillips screwdriver.

Step 11



- Gently lift the motherboard from base (as shown in second picture).

Step 12



- Carefully disconnect the ribbon cable connecting the motherboard with the front panel.
- ① At this point you can replace the old motherboard with a new one and enjoy your now-functional GameCube!

To reassemble your device, follow these instructions in reverse order.