



Removing the HP Elitebook 6930p Switch Cover

This guide will show you how to remove the switch cover assembly from the laptop.

Written By: Richdave



INTRODUCTION

This guide will show you how to remove the switch cover assembly from the laptop.



TOOLS:

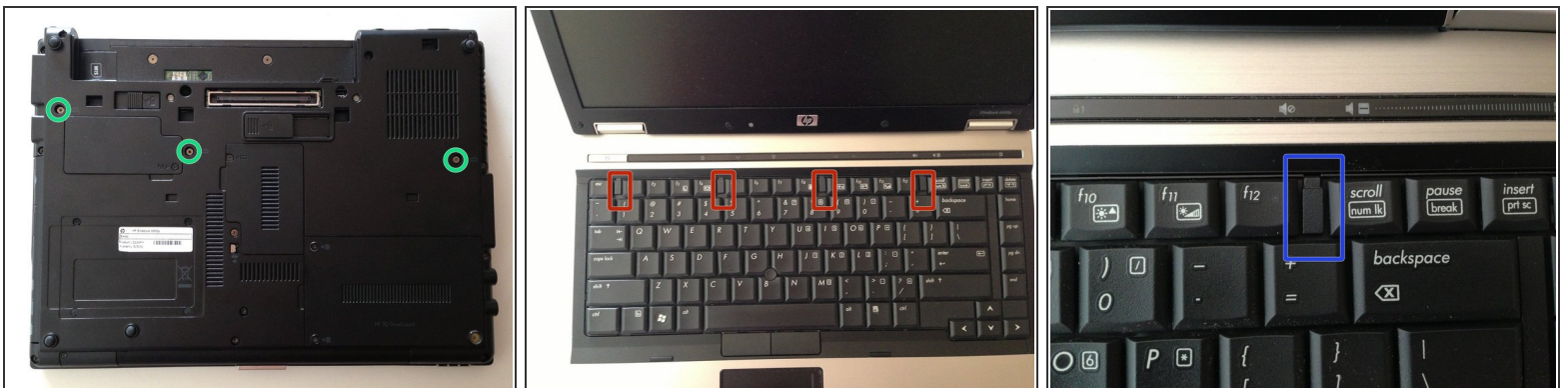
- [Phillips #1 Screwdriver](#) (1)
 - [iFixit Opening Tools](#) (1)
 - [T8 Torx Screwdriver](#) (1)
-

Step 1 — Battery Removal



- Flip laptop over and locate the battery release button
- Push release button to the left to release battery and gently pull battery from the laptop

Step 2 — Keyboard



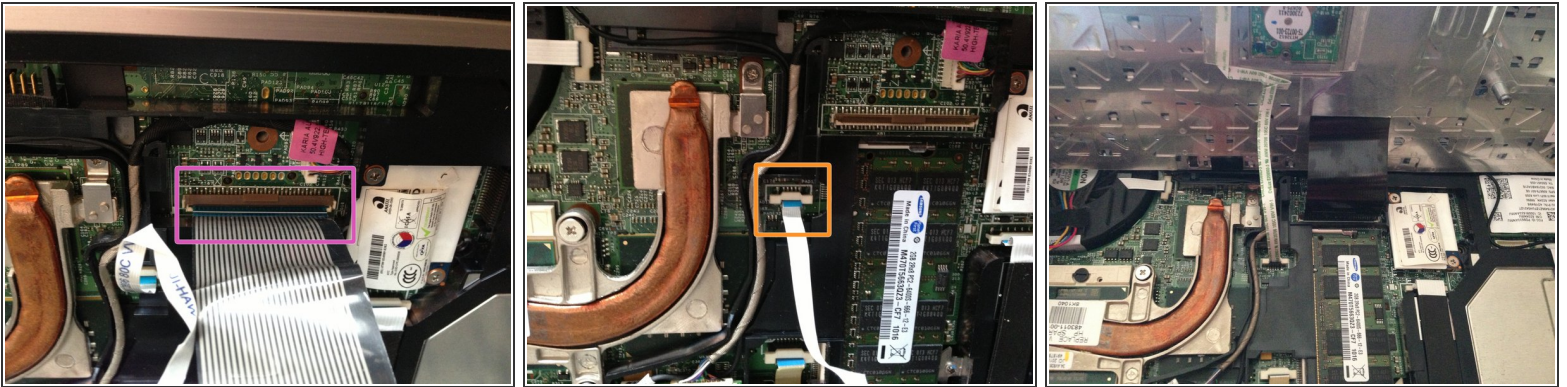
- Loosen the three Phillips 2.5×9.0 **captive** screws that secure the keyboard to the laptop
- Turn the laptop so the keyboard is facing up and locate the 4 retention tabs along the back edge of the keyboard
- Slide the retention clips toward the keyboard to release the keyboard

Step 3



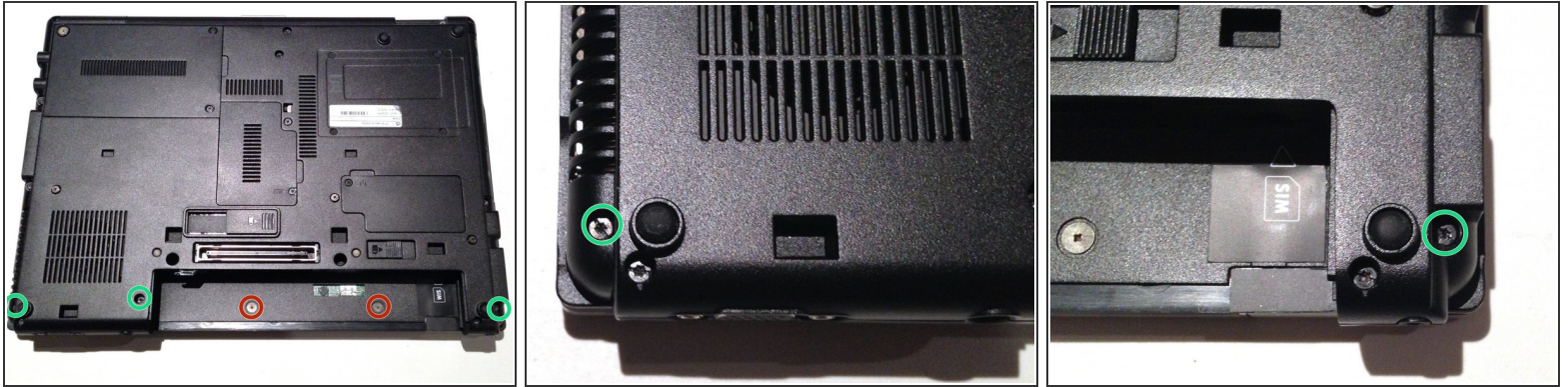
- Use a plastic pry tool to lift the rear edge of the keyboard.
- Pull the keyboard slightly towards the display to disengage the tabs along the front of the keyboard from the laptop palm rest.
- Lift the keyboard up to reveal the ribbon connectors

Step 4



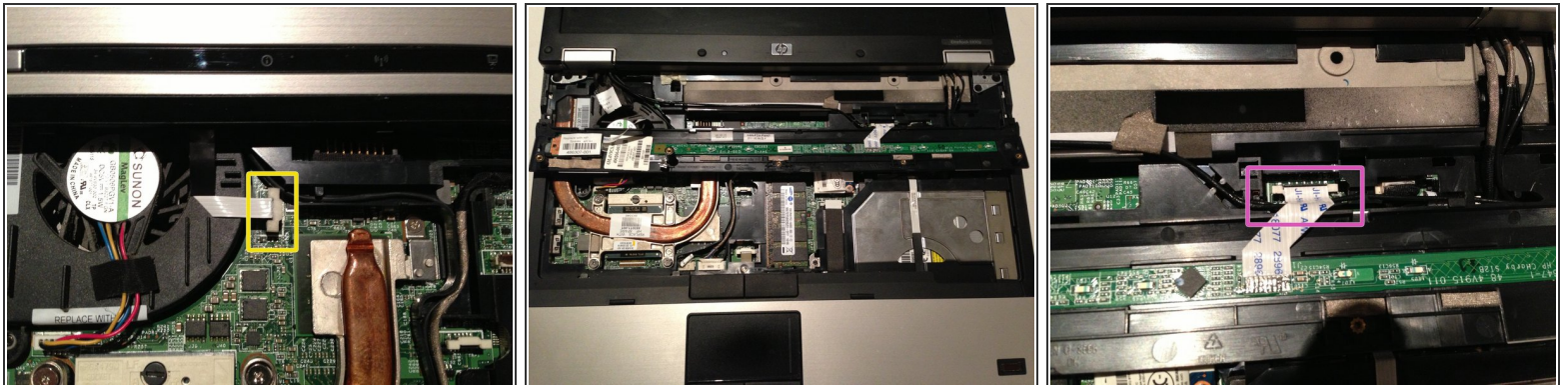
- Release the larger ribbon cable by flipping the brown retainer up so it is parallel with the ribbon cable
 - Release the smaller ribbon cable by lifting the white retainer
- i** I found it easier to reinstall both cables with the new keyboard resting on the back edge

Step 5 — Switch Cover



- Remove the two M2.0×4.0 broad-head screws.
- Remove the three Torx T8 M2.5×7.0 screws.

Step 6



- Turn the computer over with the front toward you and the open the computer as far as possible.
- Release the ZIF connector for the power button board cable.
- Remove the switch cover by lifting it straight up and flip it forward.
- Release the ZIF connector for the LED board cable.

To reassemble your device, follow these instructions in reverse order.