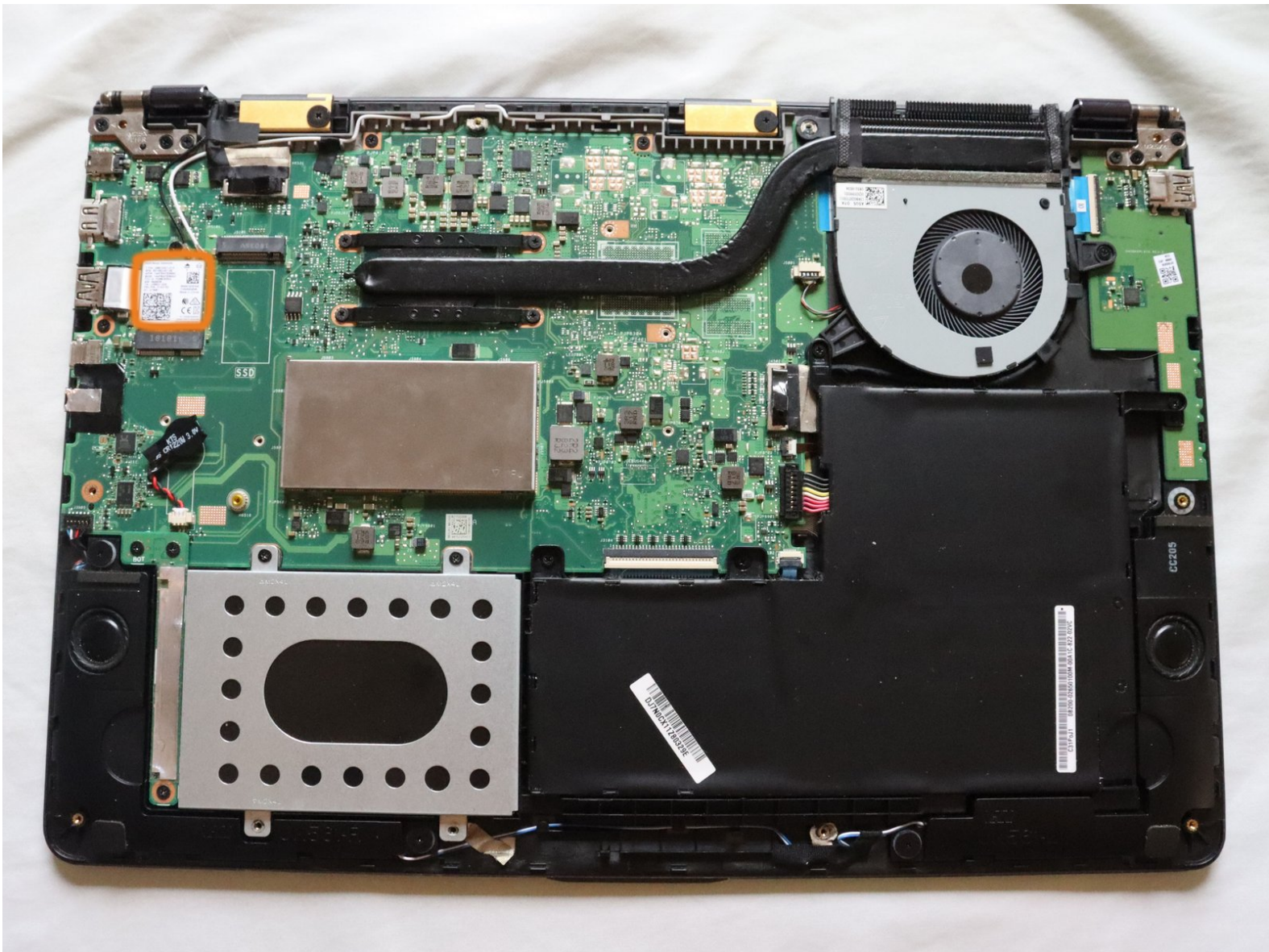




# Asus Q525U Wi-Fi Card Replacement

Having issues accessing the internet from your...

Written By: Stewart Crandall



---

## INTRODUCTION

Having issues accessing the internet from your Asus Q525U laptop? This guide gives a step-by-step instruction on how to replace the Wi-Fi card from this device.

Before beginning this repair be sure to carefully read each step in order to successfully understand the necessary procedure. Make sure your device is turned off and disconnected from the power adapter.



### TOOLS:

- [iFixit Opening Picks \(Set of 6\)](#) (1)
  - [Phillips Head Screwdriver: Size PH1](#) (1)
  - [Tweezers](#) (1)
-

## Step 1 — Back Cover



⚠ Begin by powering off the device and flipping the device over.

- Carefully remove the two longer 9.5 mm screws on the corners with a Phillips #1 screwdriver.
- Remove the eight 7.5 mm Phillips #1 screws on the back of the device.

## Step 2



- Use an opening pick to separate the back cover from the device.
- ⓘ For easiest removal, begin by prying at one of the front corners and sliding the tool under the cover in a counter-clockwise motion (to the left) toward the laptop hinge.

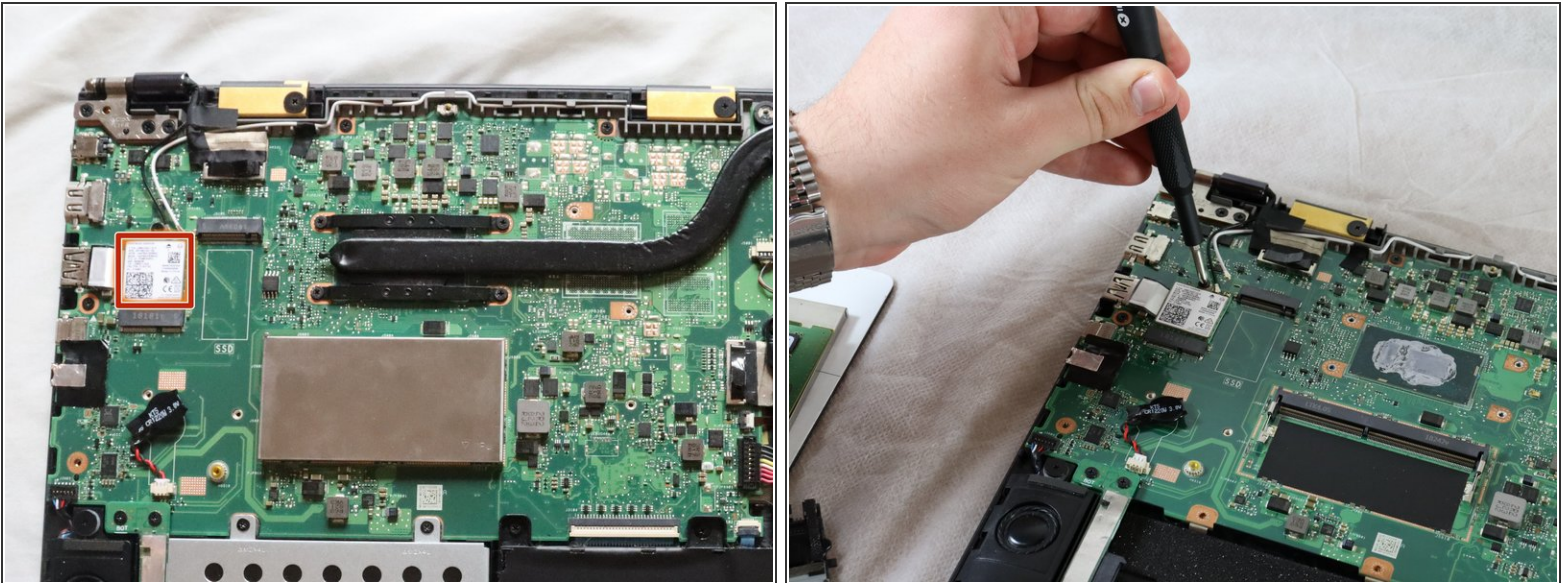


## Step 3



- Once the cover has been separated from the device, carefully lift the back cover off the device (begin by lifting from the front of the cover first).
- ⓘ The back cover should be easily removable, allowing full access to all of the internal components.

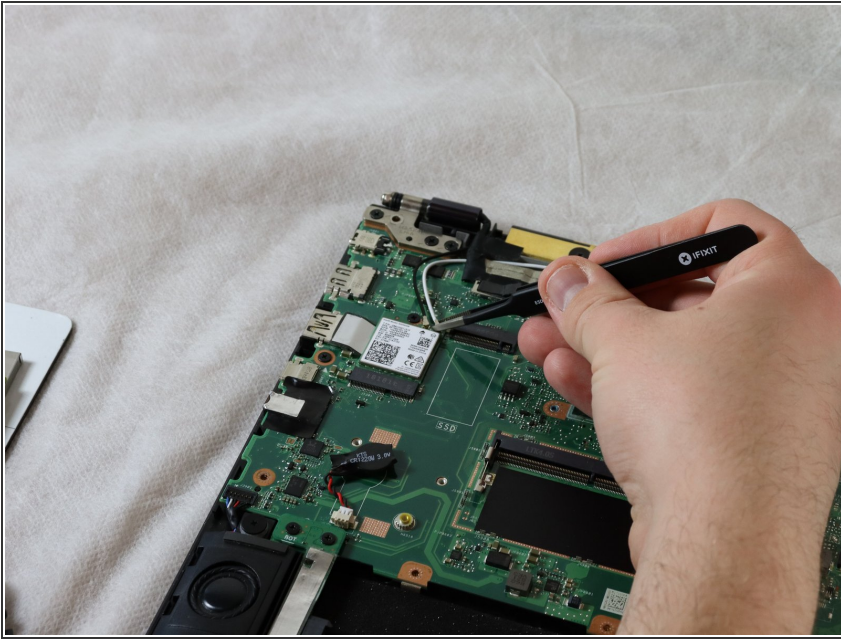
## Step 4 — Wi-Fi Card



- The Wi-Fi card is located above the CMOS coin cell battery and below one of the hinges.
- Using a Phillips #1 screwdriver, remove one 2 mm screw, that holds the card in place.

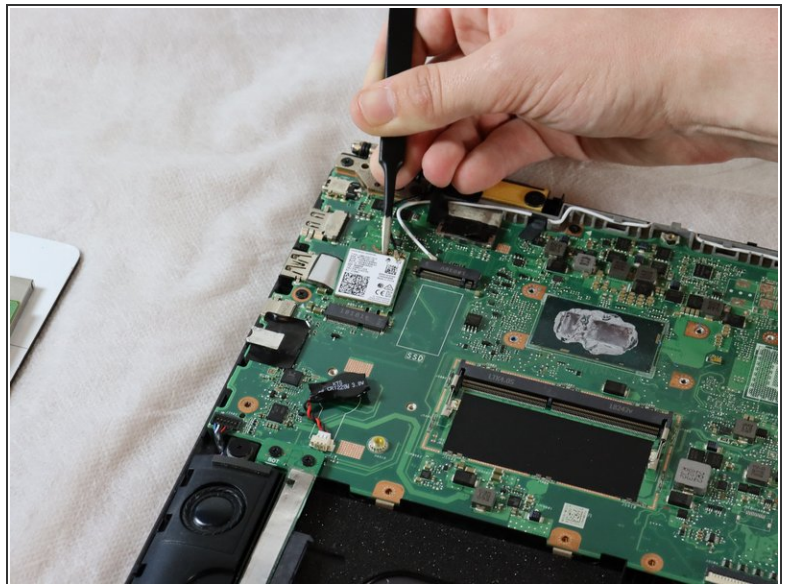
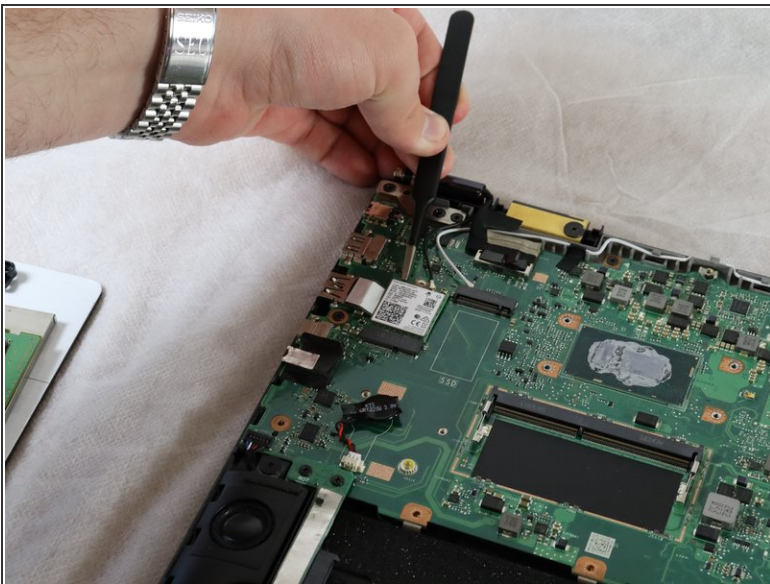


## Step 5



- Use a pair of pointed tweezers to disconnect the small black and white coaxial connectors from the Wi-Fi card.

## Step 6



- Use the pointed tweezers to pull the network card out and away from the socket.

To reassemble your device, follow these instructions in reverse order.