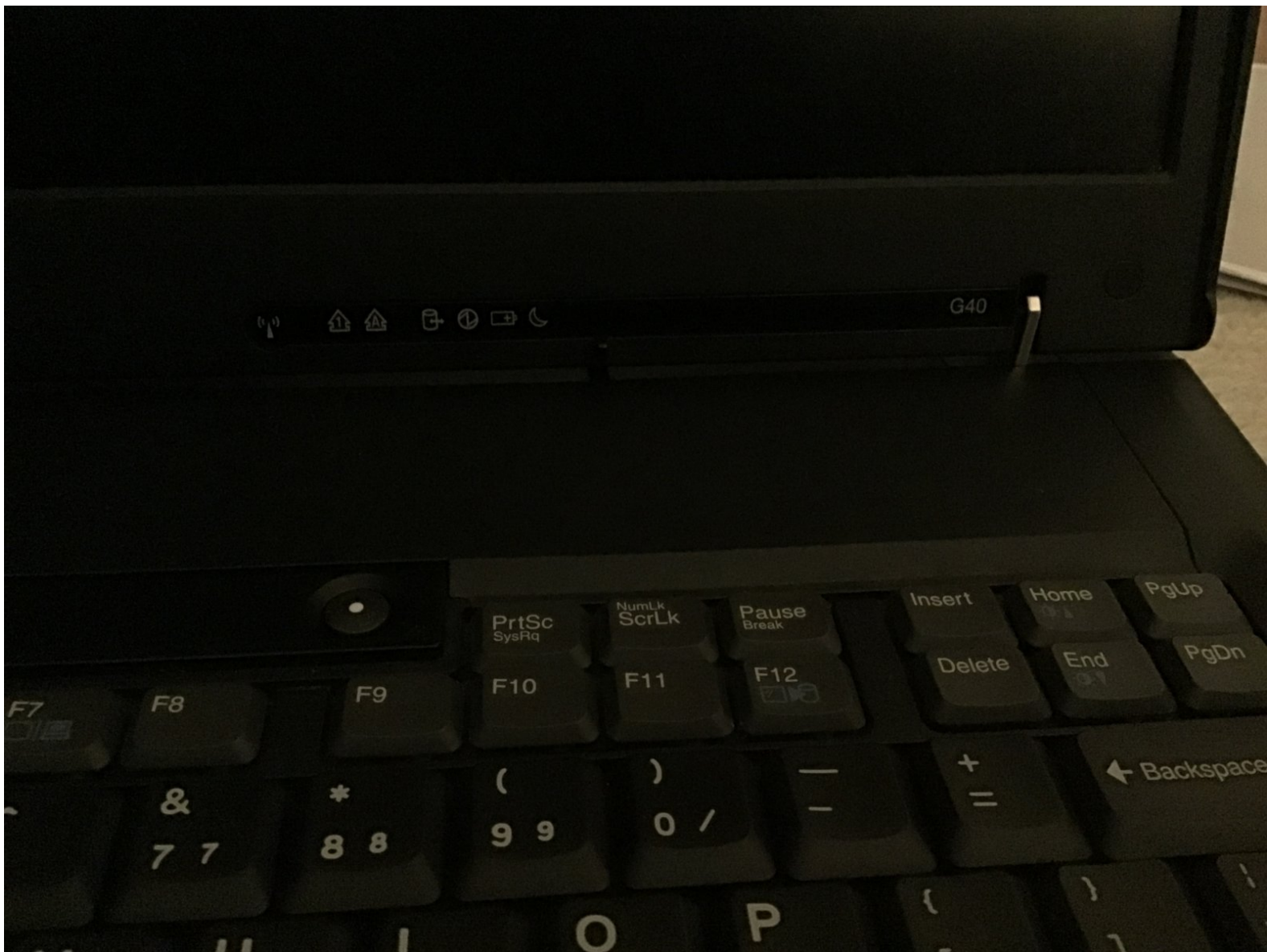




Replace IBM ThinkPad G40 Hard Drive

This technique is useful to remove your hard...

Written By: Eshaan Bhargav Patel



INTRODUCTION

This technique is useful to remove your hard drive.



TOOLS:

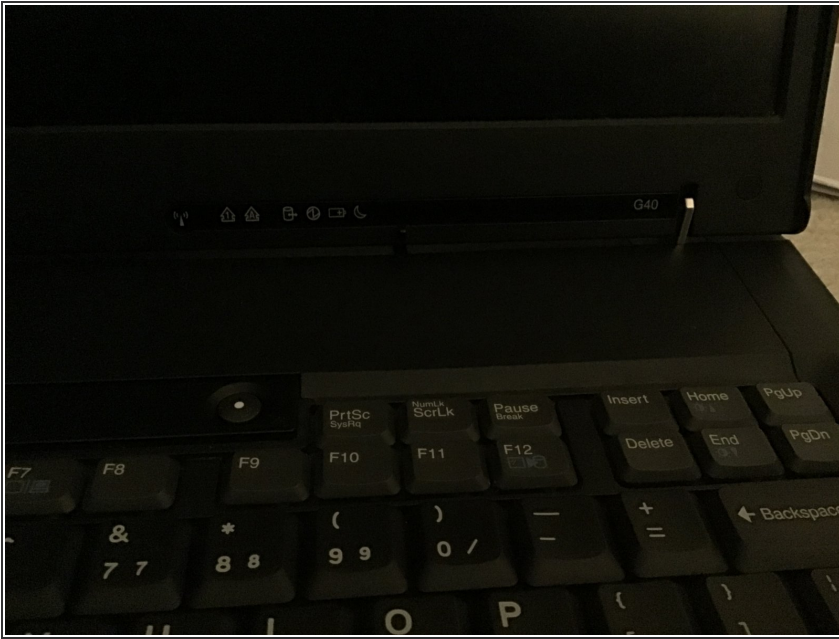
- [Phillips #0 Screwdriver](#) (1)



PARTS:

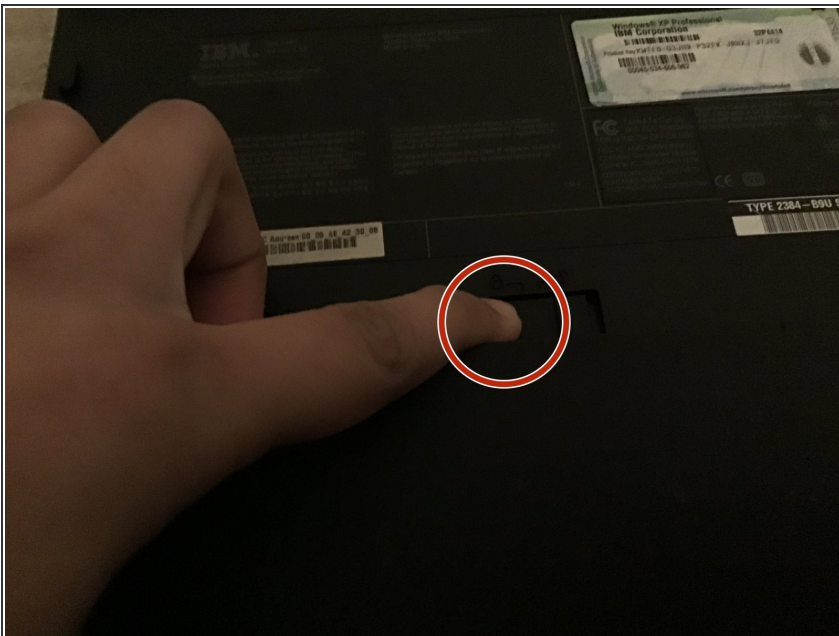
- [1 TB SSD](#) (1)
- [Crucial MX500 250 GB SSD](#) (1)
- [Crucial MX500 500 GB SSD](#) (1)
- [Crucial MX500 2 TB SSD](#) (1)

Step 1 — Identify model



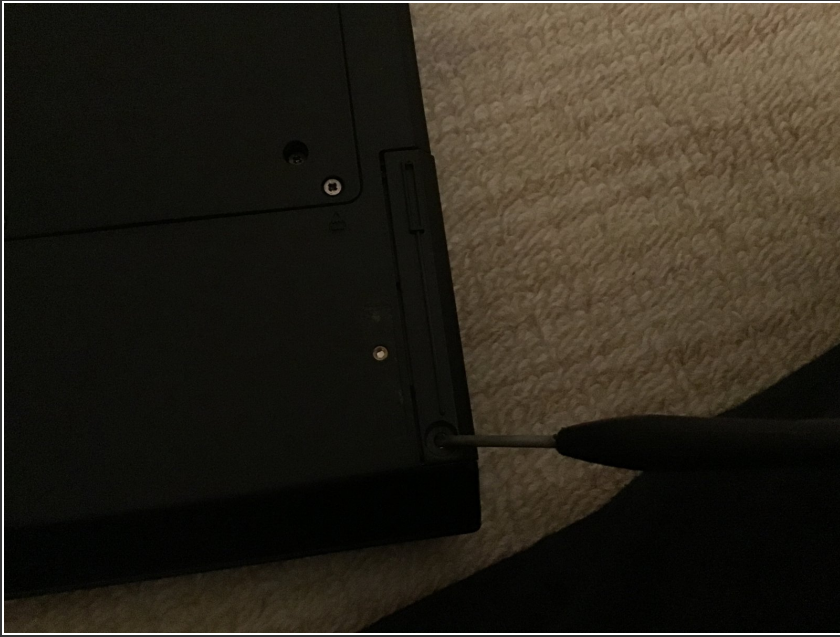
- i To begin, make sure you have an IBM ThinkPad G40. Identify your model by the status light bar.

Step 2 — Remove battery (optional but recommended)



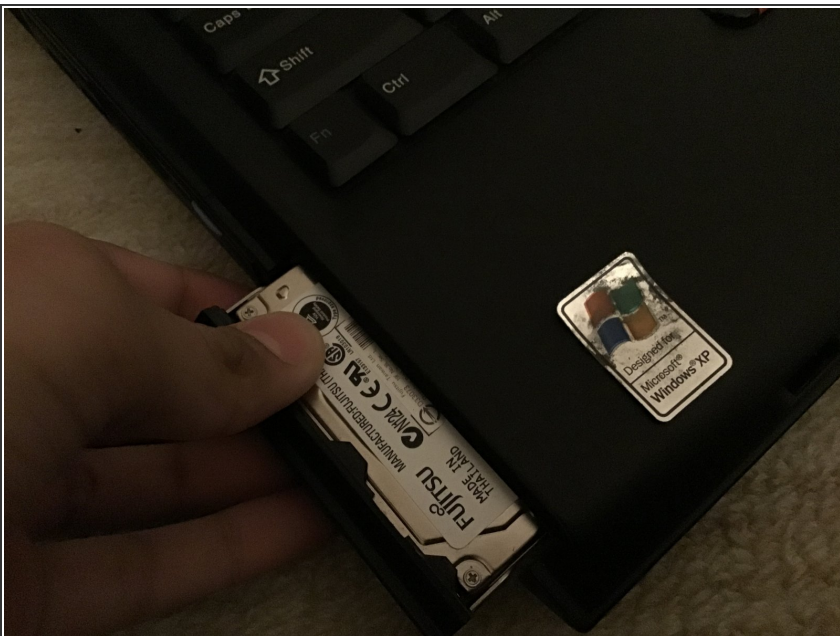
- Turn over the laptop. Press the latch to remove the battery.

Step 3



- Remove the screw on the bottom next to the hard drive. It is under the palmrest on the side opposite the battery.

Step 4 — Remove the drive



- Now pull strongly but gently without shaking on the hard drive, it's next to the audio jacks. Don't yank out the audio jacks.
- Open your computer's latch.

Step 5 — Finished!



- Now you're complete with it. Put a new hard drive (or ssd) inside if desired, or put back in the old hd.

To reassemble your device, follow these instructions in reverse order.