



Nokia Lumia 900 Battery Replacement

A guide for removing the battery of your Nokia Lumia 900 Windows Phone.

Written By: Kourtney Collier



INTRODUCTION

The battery is crucial to the function of the Nokia Lumia 900. The battery is the one of the easiest components to replace within the Nokia Lumia 900. This guide will show you how to easily and quickly remove the battery.



TOOLS:

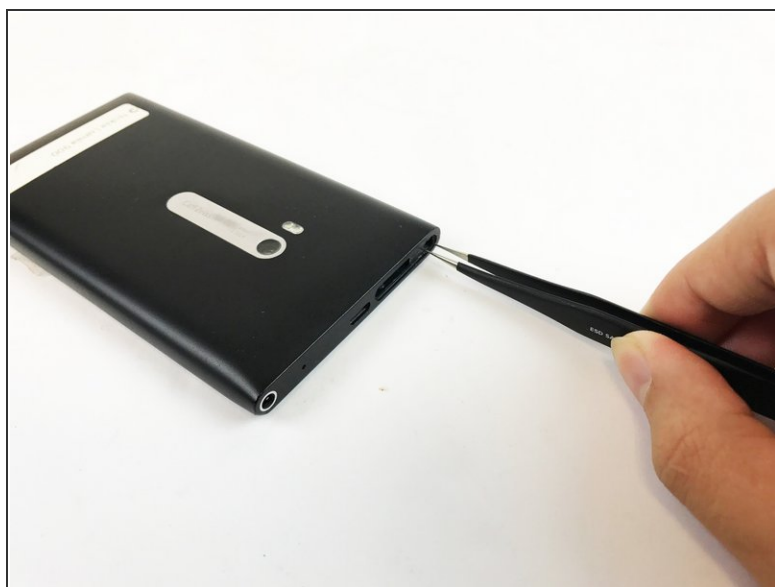
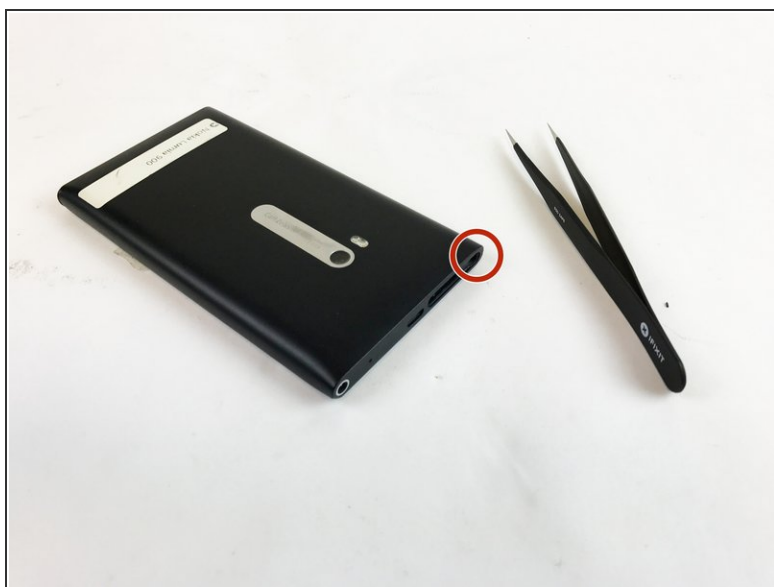
- [Suction Handle](#) (1)
 - [Spudger](#) (1)
 - [Tweezers](#) (1)
 - [iOpener](#) (1)
 - [iFixit Opening Tool](#) (1)
-

Step 1 — Screen



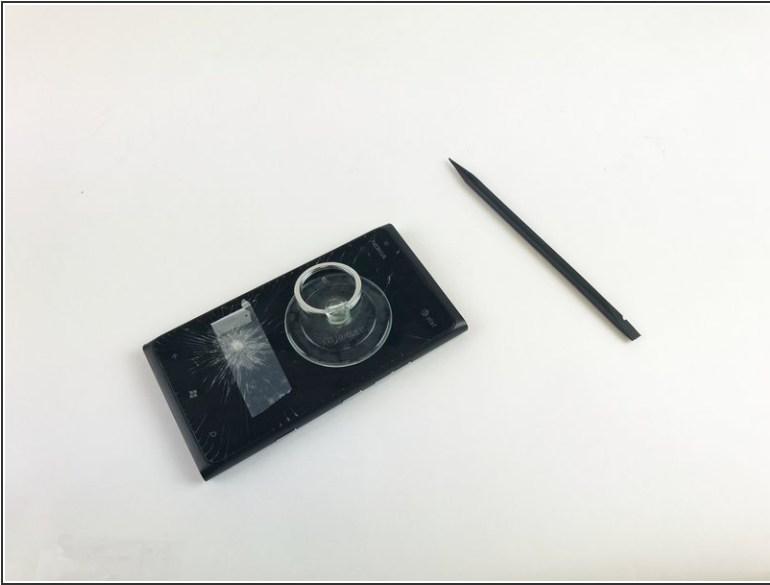
- Insert the pointed end of the spudger into the sim card port indicated by the picture. Then proceed to remove the sim card port entirely.

Step 2



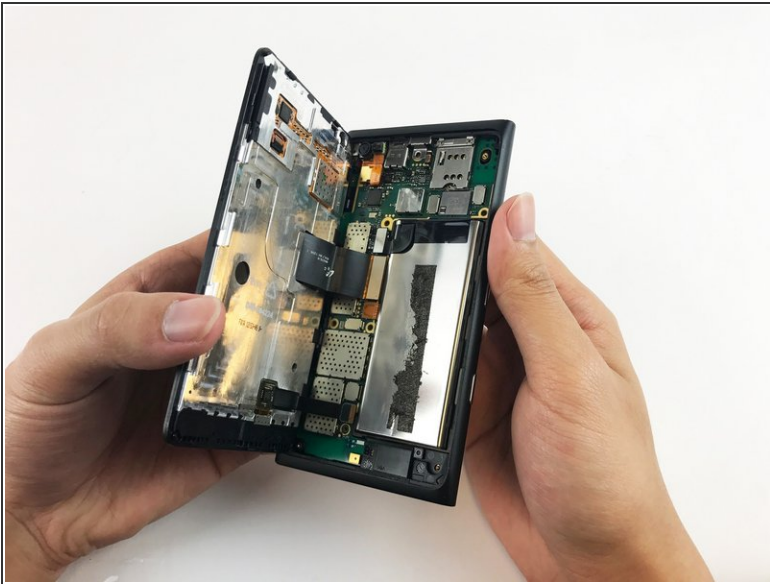
- Use tweezers to remove the small rod in the port indicated in the picture.

Step 3



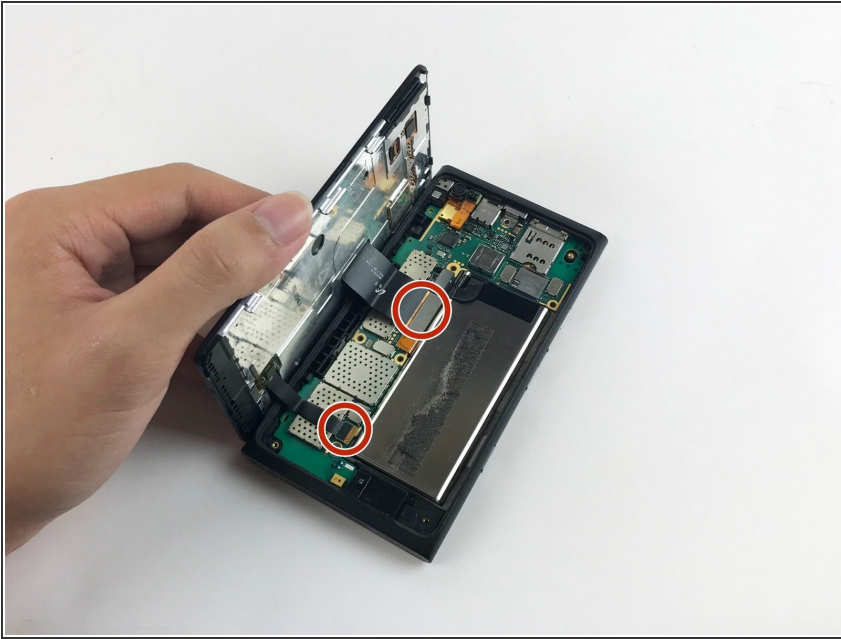
- Separate the screen from the motherboard by prying it open with the spudger along with pulling upwards with the suction cup.

Step 4



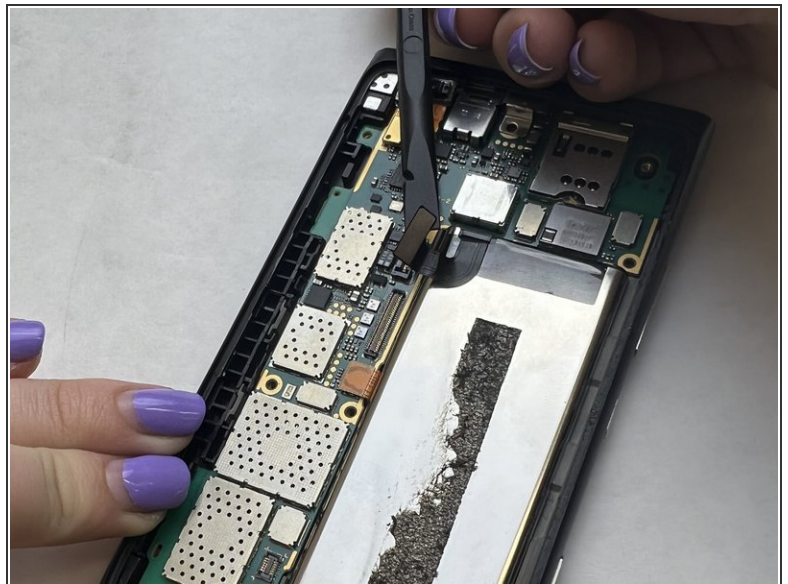
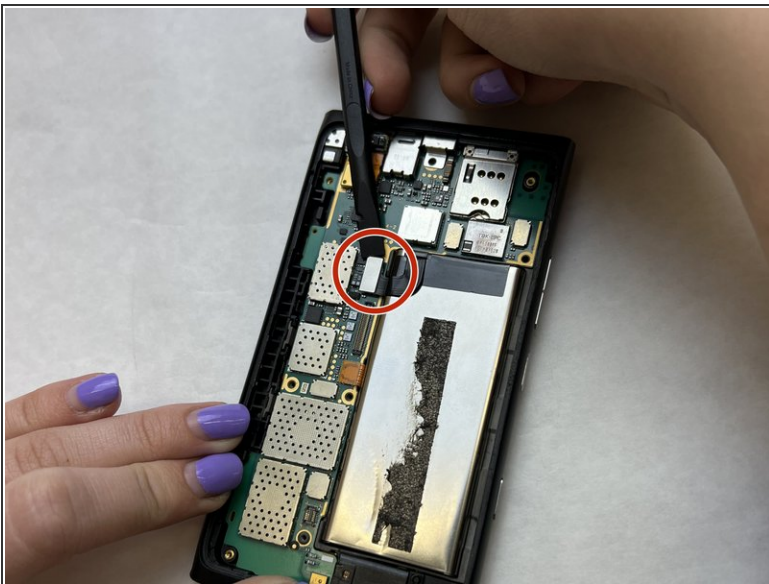
- Gently pull apart the screen from the motherboard, with only the ribbons connected from the motherboard to the screen.

Step 5



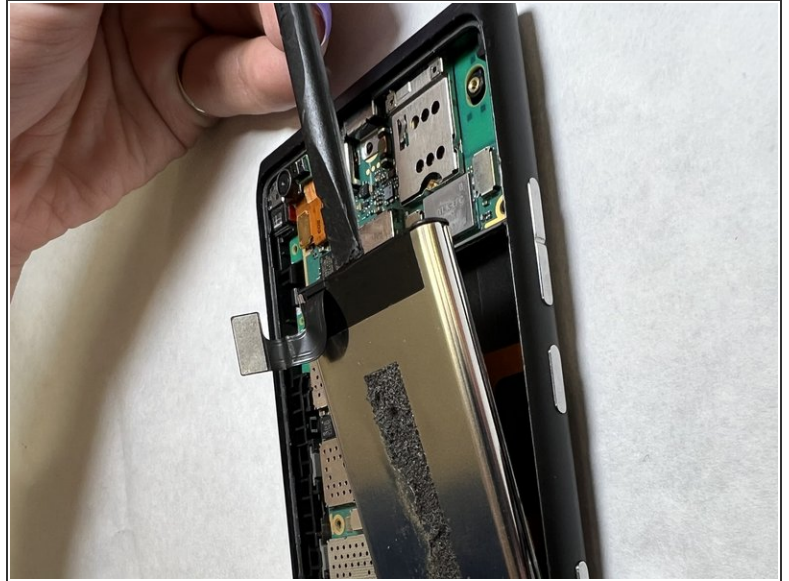
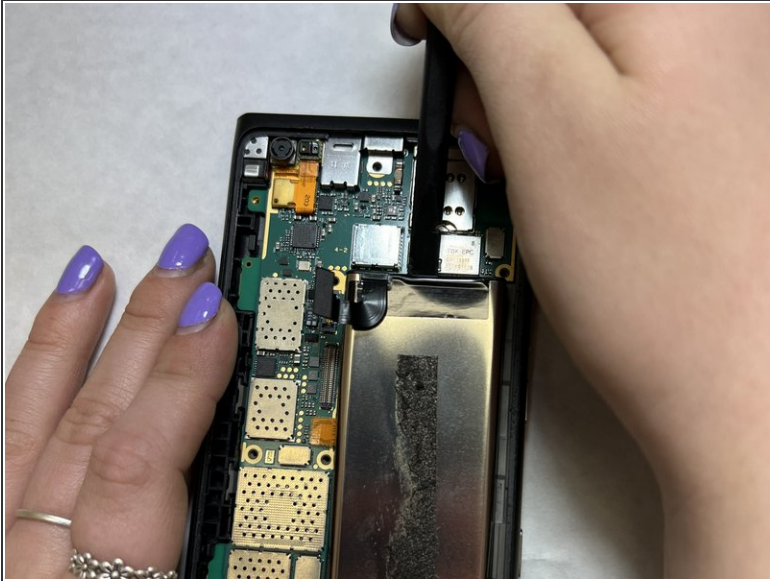
- Disconnect the No-fuss cables from the motherboard by gently prying them up using the flat end of the black stick spudger. Make sure not to bend or crease the cable.
- Remove the screen.

Step 6 — Battery



- Use the flat end of a spudger to carefully disconnect the ribbon cable.
- ⓘ Make sure not to bend or crease the cable.

Step 7



- Use the flat end of a spudger to remove the battery.
- ⓘ The battery may be glued down. This will be evident if the battery is difficult to lift. Use the iFixit iOpener to heat the back of the phone allowing the glue to heat and become more pliable before trying to lift the battery again. This may take several minutes.

To reassemble your device, follow these instructions in reverse order.