



Nokia Lumia 900 Speaker Replacement

A guide for removing the speaker of your Nokia Lumia 900 Windows Phone.

Written By: Kourtney Collier



INTRODUCTION

The speaker is an important component of the Nokia Lumia 900. Because it is a small component that is housed beneath many different parts, this guide will show how to remove it carefully and properly.



TOOLS:

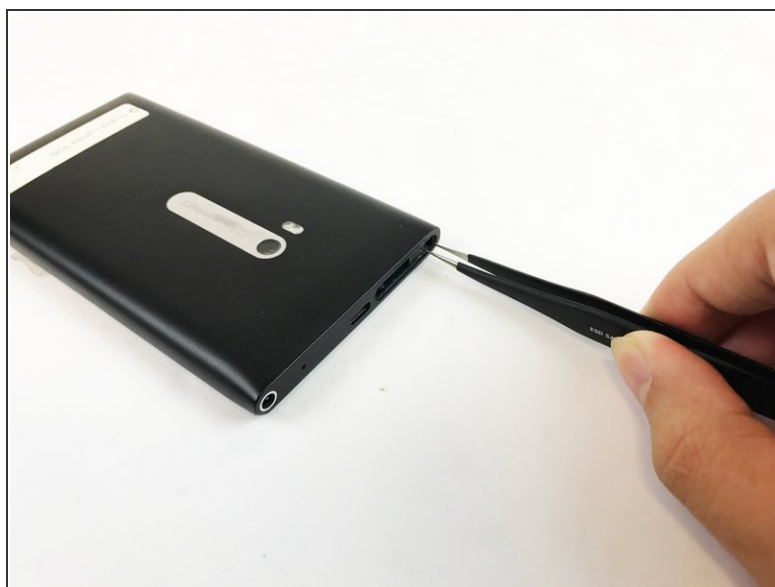
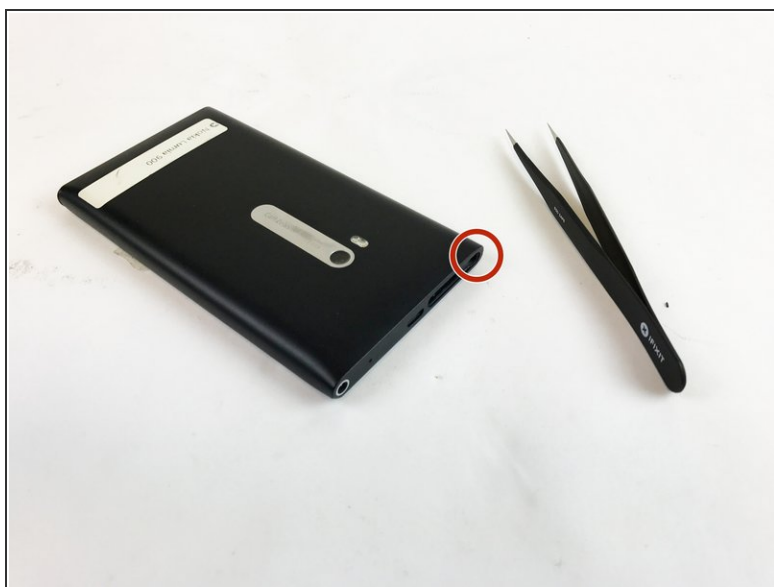
- [Suction Handle](#) (1)
 - [Spudger](#) (1)
 - [Tweezers](#) (1)
 - [iOpener](#) (1)
 - [iFixit Opening Tool](#) (1)
-

Step 1 — Screen



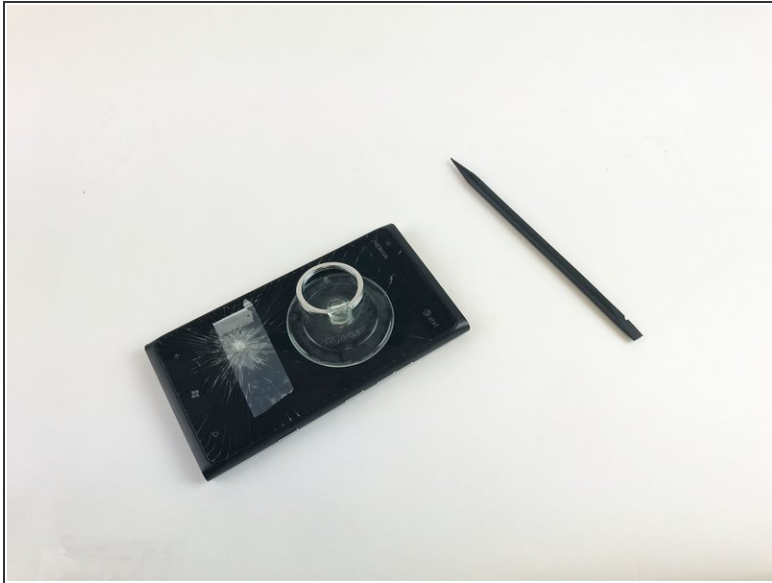
- Insert the pointed end of the spudger into the sim card port indicated by the picture. Then proceed to remove the sim card port entirely.

Step 2



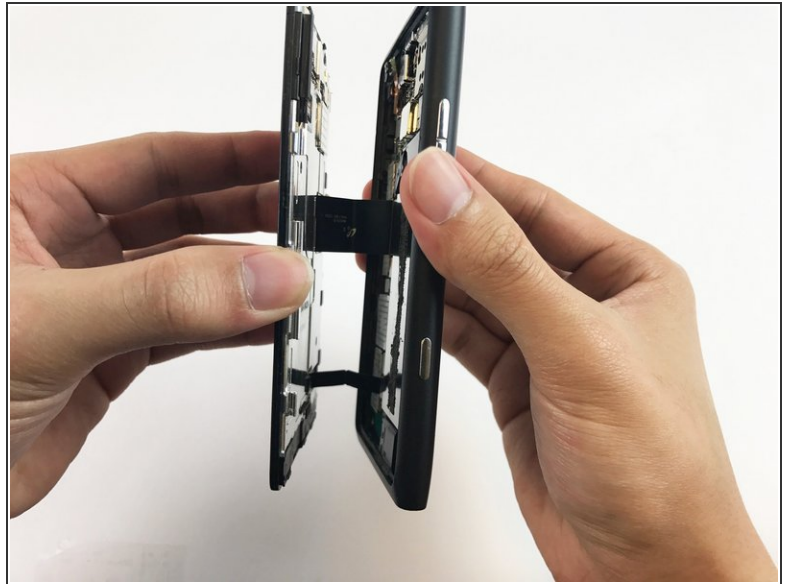
- Use tweezers to remove the small rod in the port indicated in the picture.

Step 3



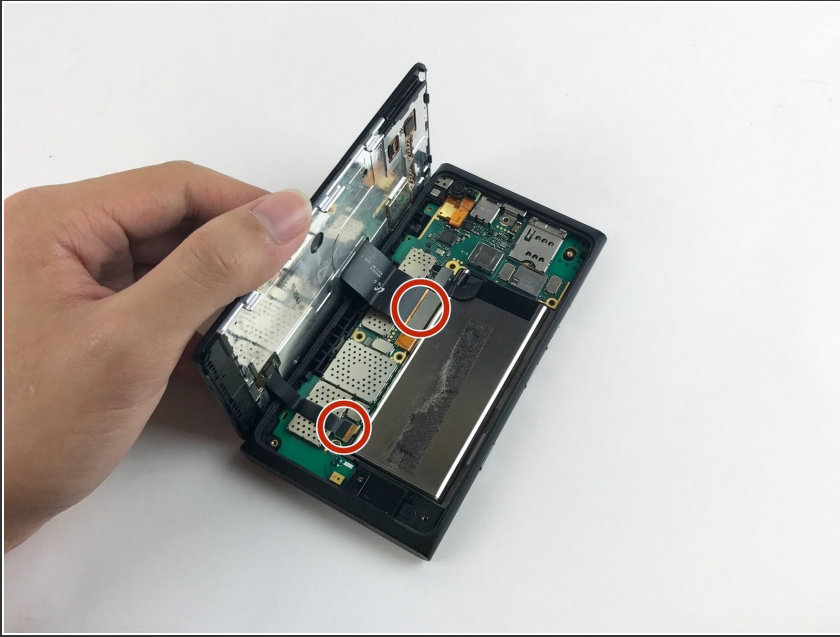
- Separate the screen from the motherboard by prying it open with the spudger along with pulling upwards with the suction cup.

Step 4



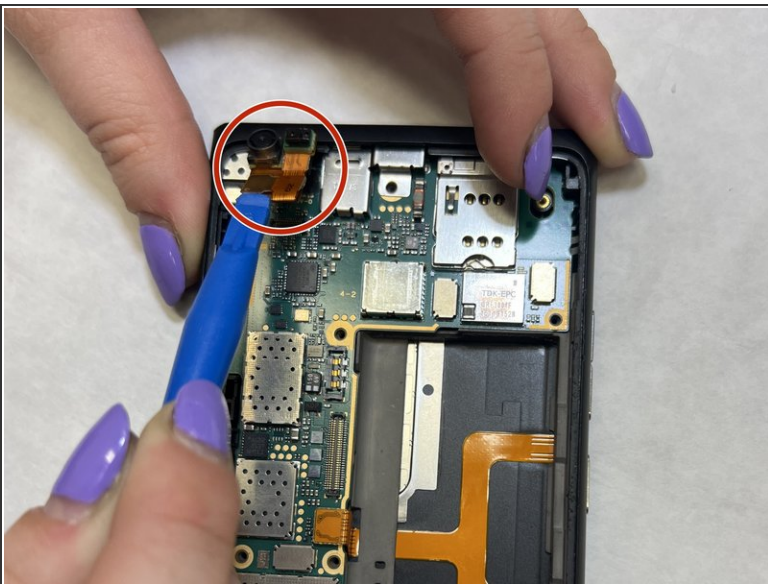
- Gently pull apart the screen from the motherboard, with only the ribbons connected from the motherboard to the screen.

Step 5



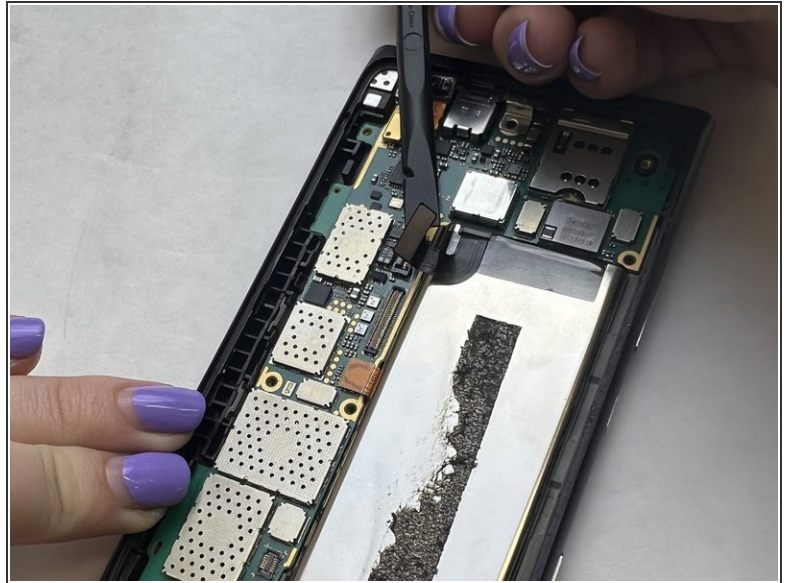
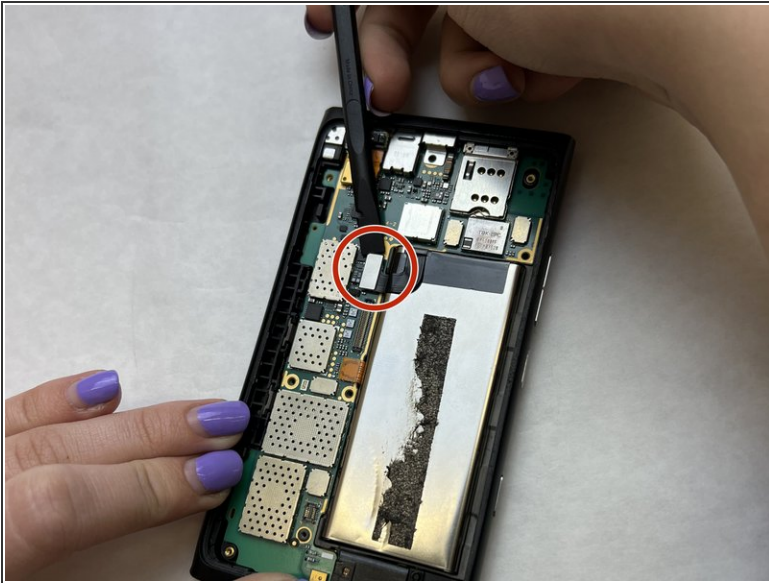
- Disconnect the No-fuss cables from the motherboard by gently prying them up using the flat end of the black stick spudger. Make sure not to bend or crease the cable.
- Remove the screen.

Step 6 — Front Camera



- Use the iFixit iOpener or another heat source to gently heat the top left corner until the adhesive under the camera softens.
- Use the plastic opening tools to carefully lift the front camera from the motherboard.

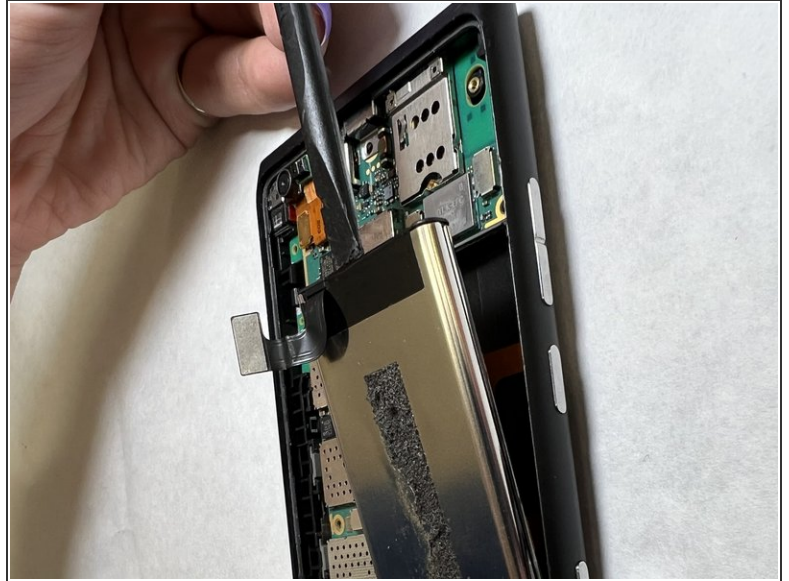
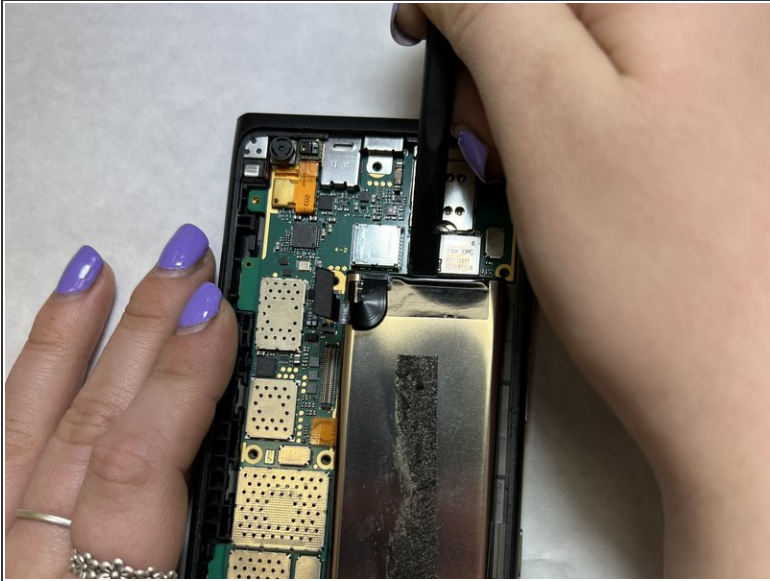
Step 7 — Battery



- Use the flat end of a spudger to carefully disconnect the ribbon cable.

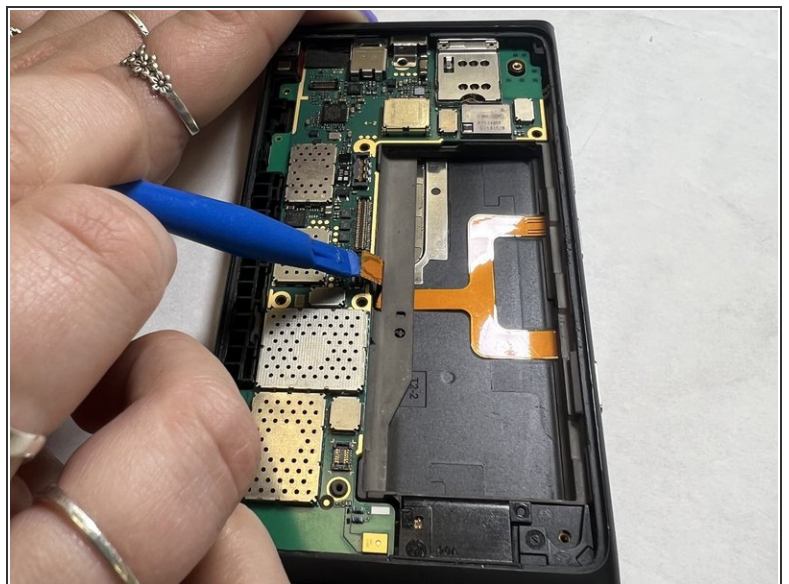
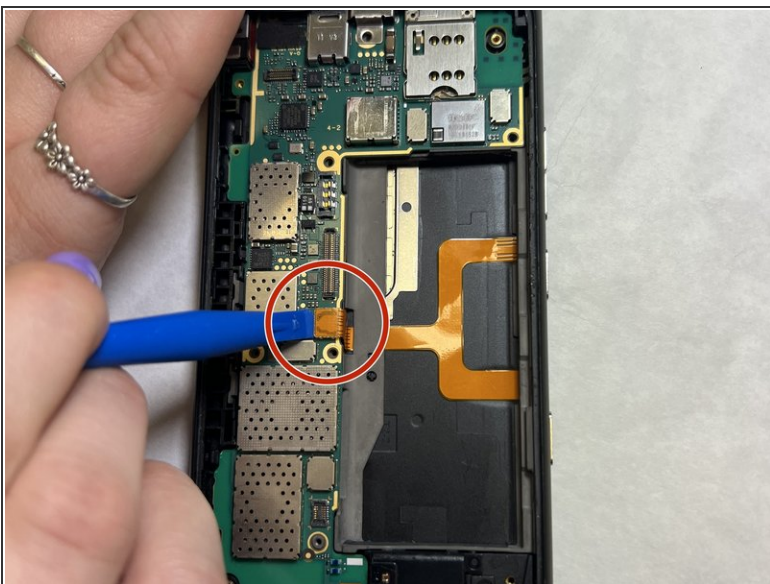
i Make sure not to bend or crease the cable.

Step 8



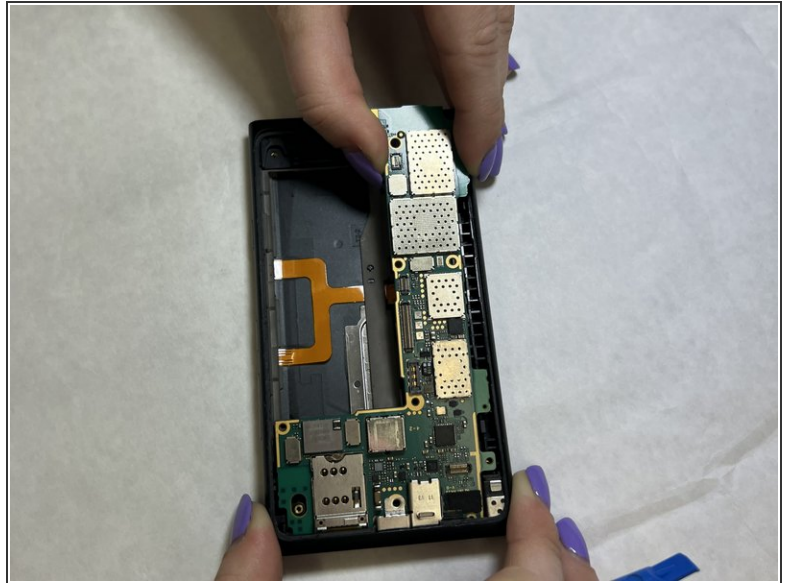
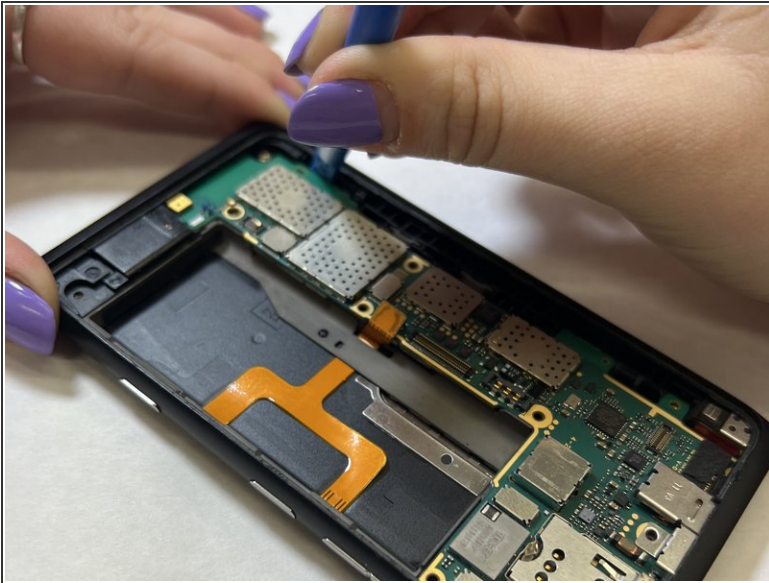
- Use the flat end of a spudger to remove the battery.
- ⓘ The battery may be glued down. This will be evident if the battery is difficult to lift. Use the iFixit iOpener to heat the back of the phone allowing the glue to heat and become more pliable before trying to lift the battery again. This may take several minutes.

Step 9 — Speaker



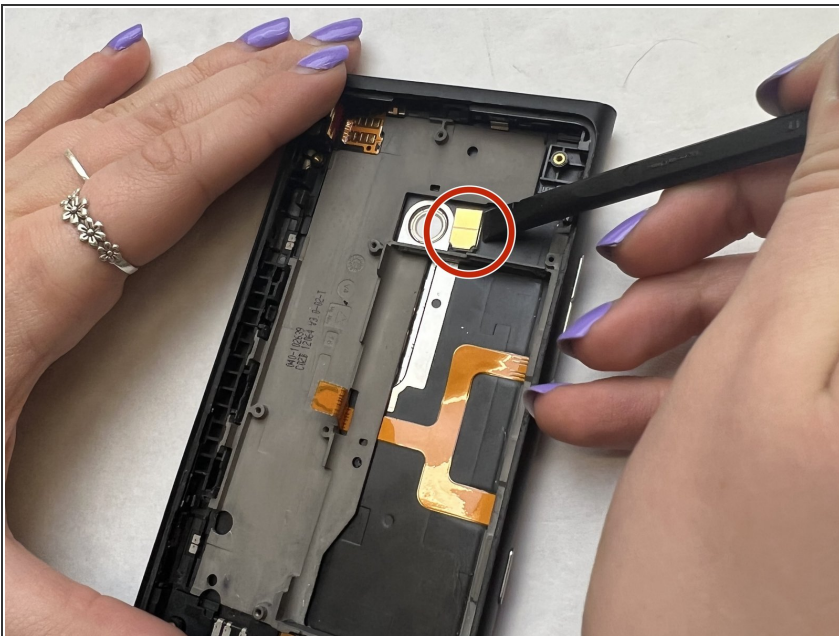
- Use the plastic opening tool to lift the orange ribbon cable from the motherboard.

Step 10



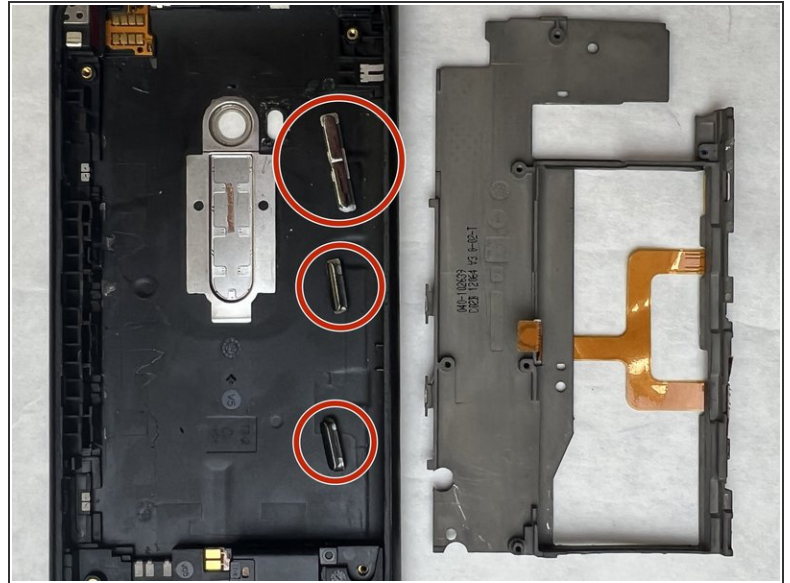
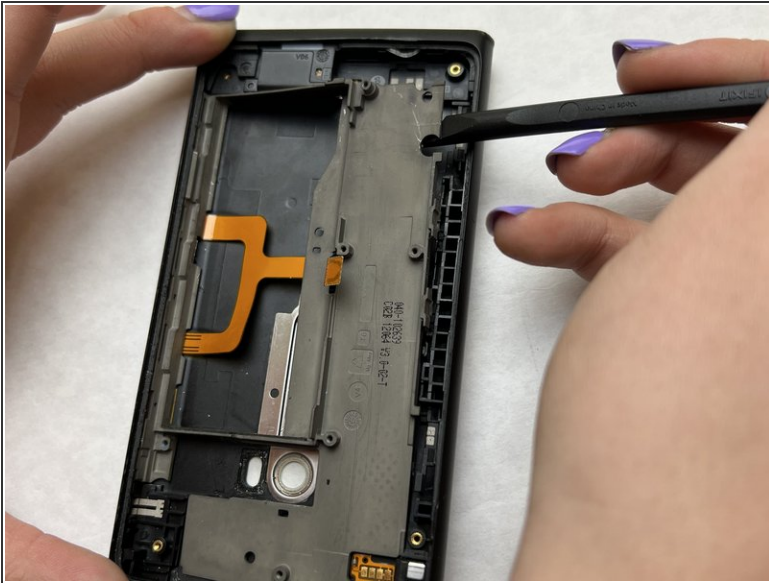
- Use the plastic opening tool to lift the motherboard out of the casing.
- ❗ It is recommended that you wedge the opening tool in the crevice between the motherboard and casing in the top righthand corner of the device.

Step 11



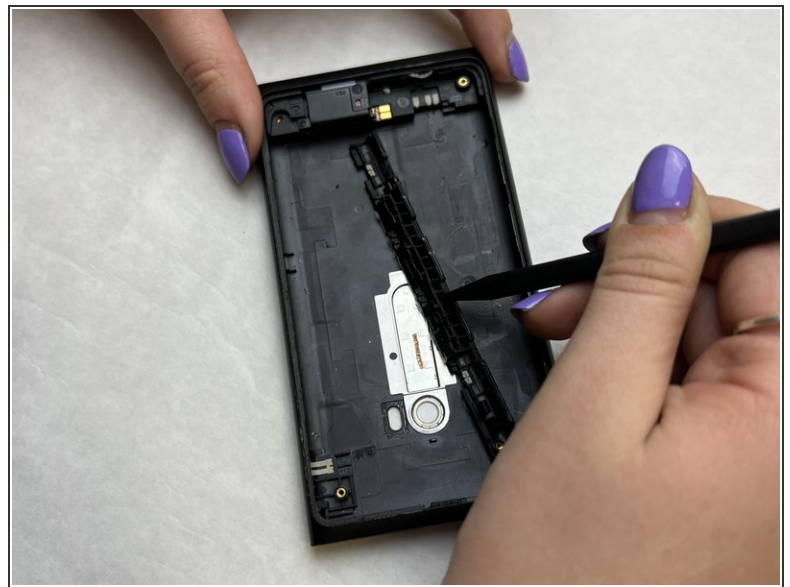
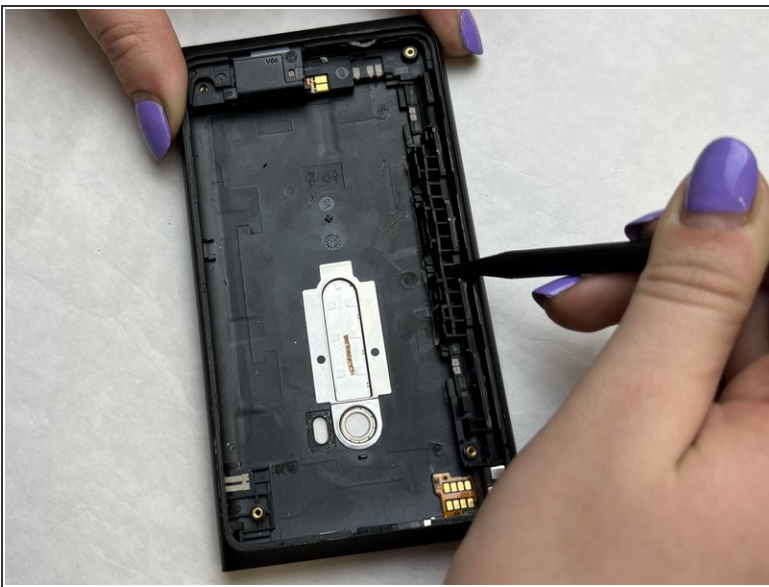
- Use the flat end of a spudger to lift the LED out of the casing.

Step 12



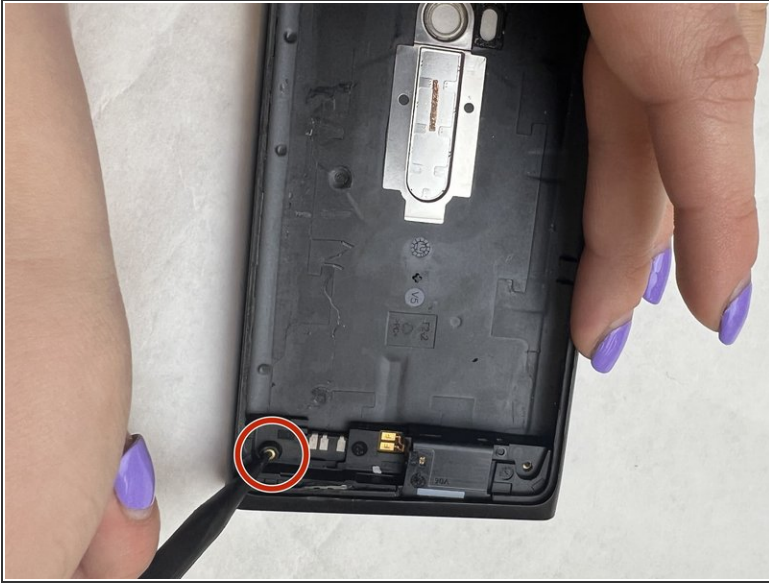
- Use the flat end of a spudger to lift the metal backplate from the casing.
- Be sure not to lose the buttons.

Step 13



- Wedge the pointed end of the spudger into the gaps in the antenna housing and pull the antenna housing away from the casing walls.

Step 14



- Insert the pointed end of the spudger into the hole and slide the speaker housing out from the casing.

To reassemble your device, follow these instructions in reverse order.