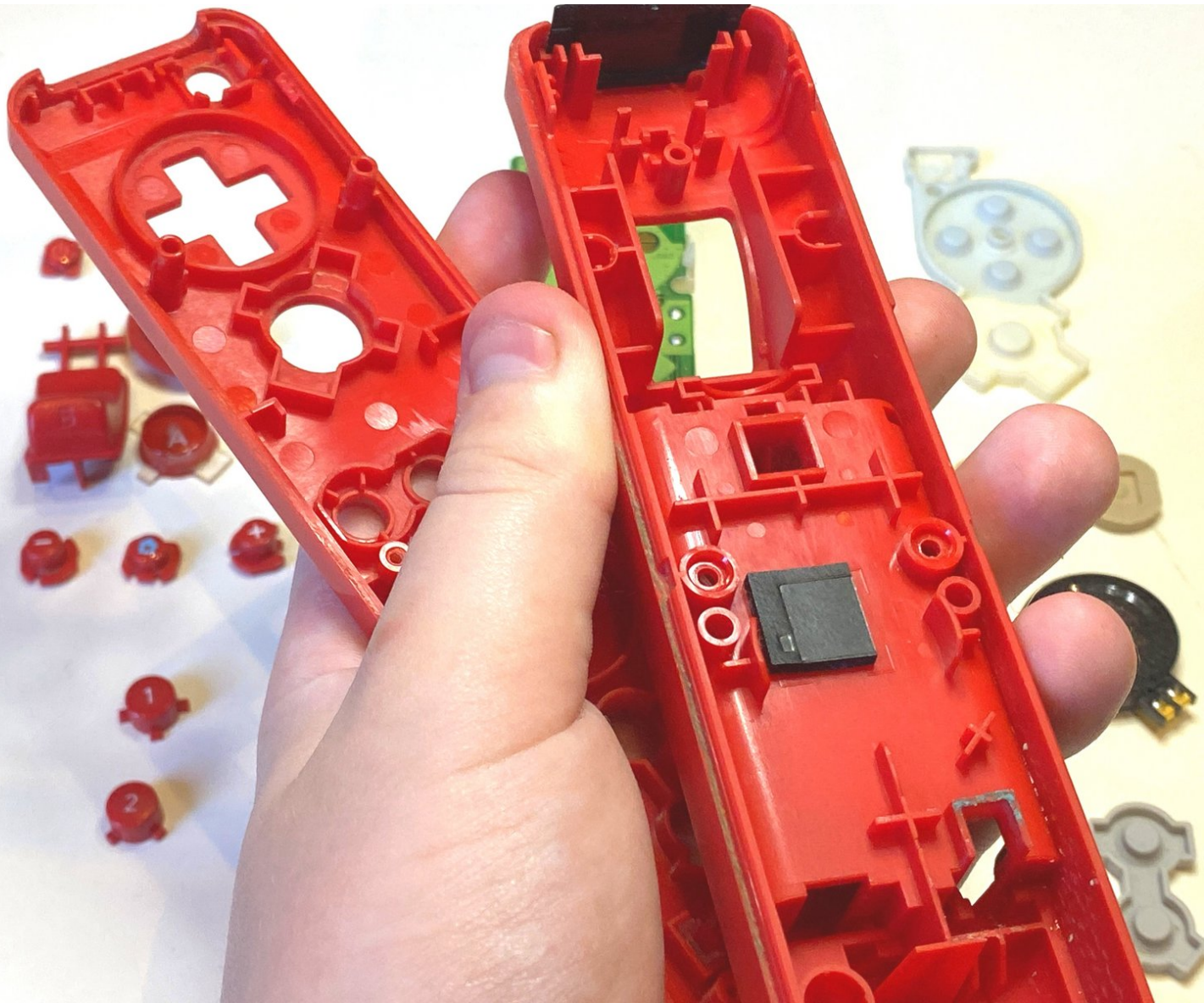




# Nintendo Wii Remote Shell Replacement

This Guide shows how to change a Wii Remote She...

Written By: Artem Ivat



# INTRODUCTION

This Guide shows how to change a Wii Remote Shell. There are many reasons to change the shell. Such as

- Not liking the color
- Shell is cracked
- White Shell turned yellowish

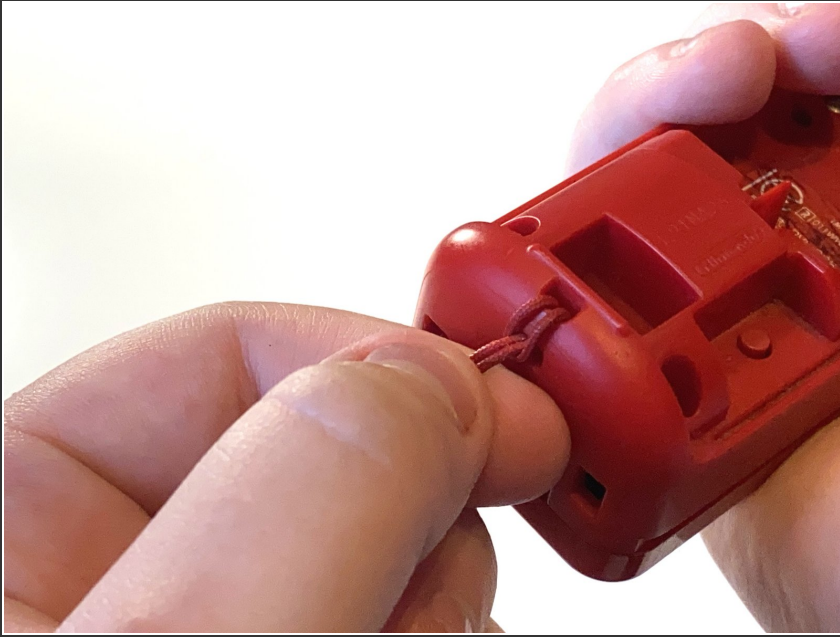
Lets get right into the guide!



## TOOLS:

- [Tri-point Y1 Screwdriver](#) (1)
-

## Step 1 — Removing the strap (Optional, but recommended.)



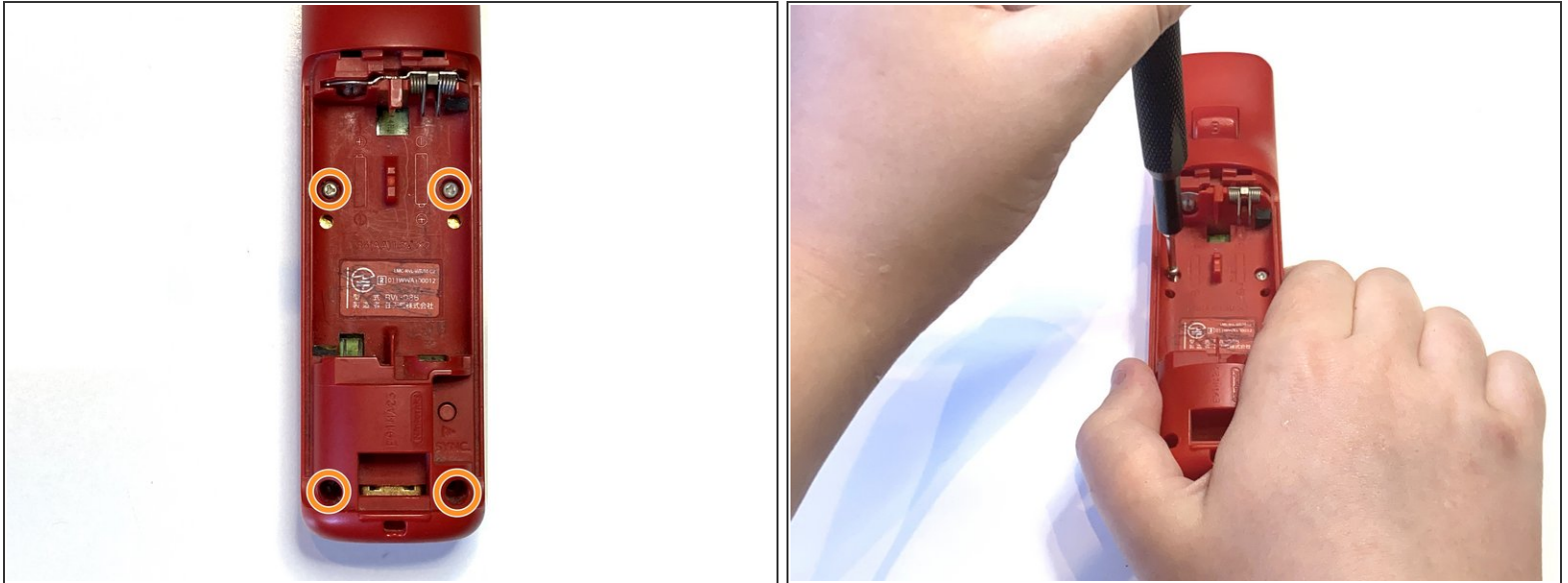
- Remove the Safety strap to prevent it into getting in our way

## Step 2 — Removing the batteries



- Remove the battery using a fingernail.

### Step 3 — Removing the screws



- This is where the disassembly begins, Grab your Y1 Screwdriver and unscrew the following screws

### Step 4 — Getting inside



- Gently take out the front cover

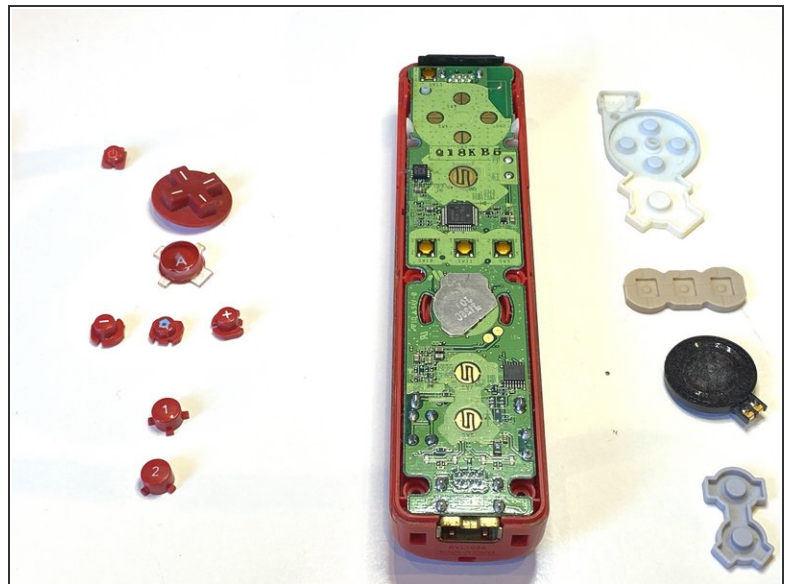


## Step 5 — Removing the buttons



- Remove all of the buttons on the motherboard

## Step 6 — Removing Rubber



- Remove all of the rubber.

## Step 7 — Removing the Motherboard



- Take out the motherboard

## Step 8 — Taking out the B Button



- Take out the B button

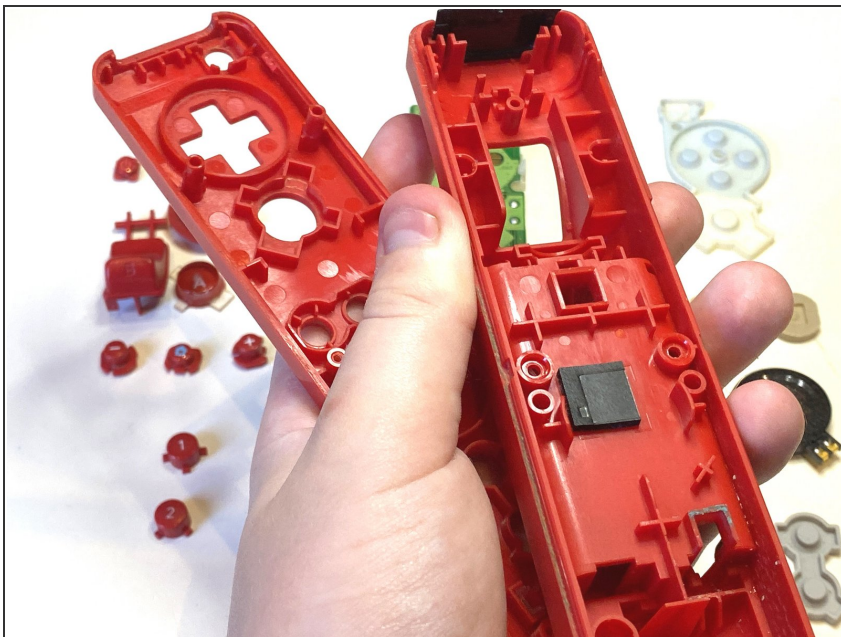


## Step 9 — Removing the B Button



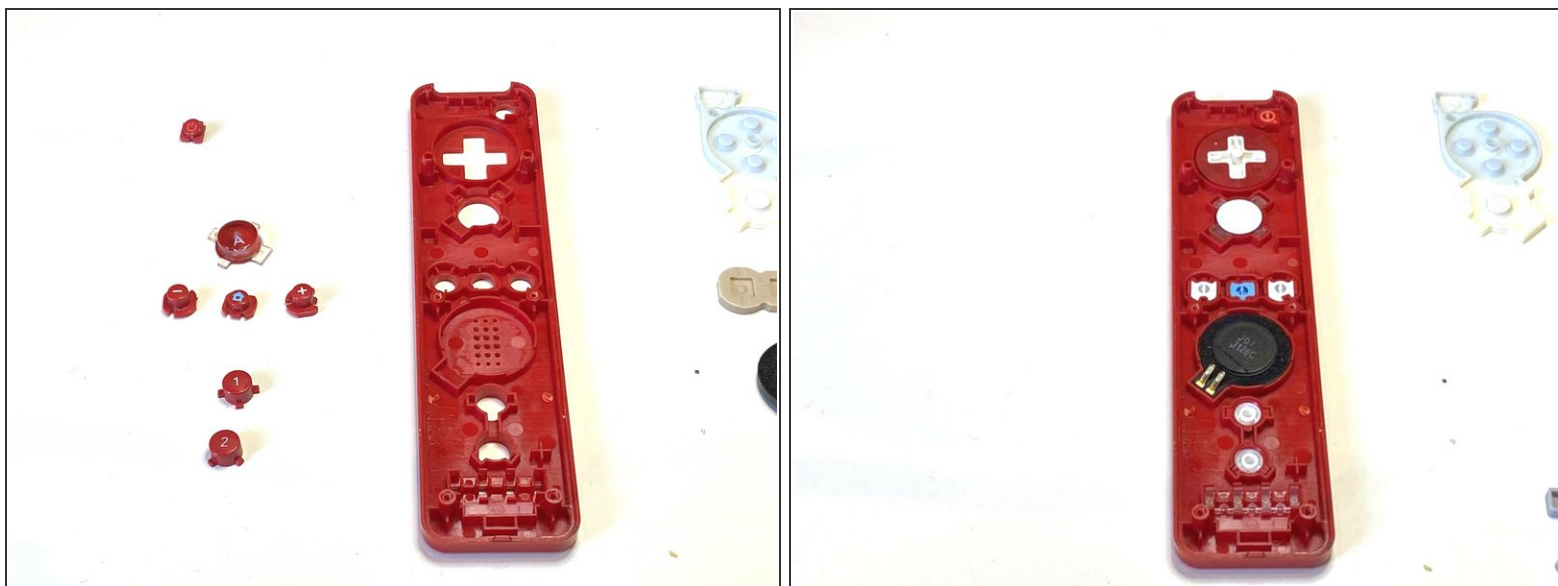
- Remove the B Button

## Step 10 — Getting new shell



- Grab your new shell

## Step 11 — Inserting the components



- Insert all of the buttons

⚠ Make sure they fit in properly and are clickable.

## Step 12 — Inserting Rubber



- Put on all of the rubber on the buttons



## Step 13 — Inserting the B Button



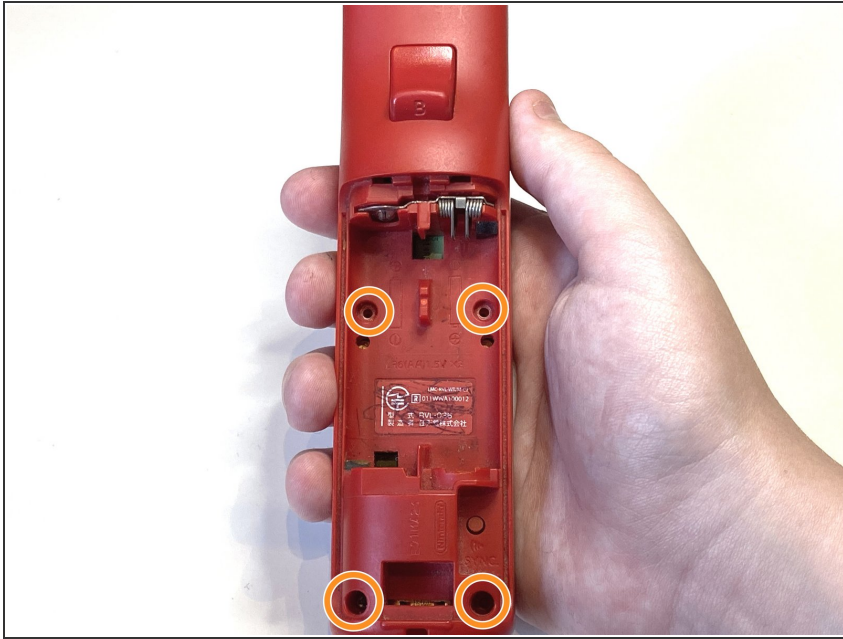
- Connect the B button

## Step 14 — Closing up the remote



- Carefully place the back cover on your wii remote

## Step 15 — Screwing In



- Screw in the Y1 Screws into the following places

Thats it!