



Xbox 360 S RF Board Repair

Are the faceplate buttons on your Xbox 360 S...

Written By: Bayden Yazalina



INTRODUCTION

Are the faceplate buttons on your Xbox 360 S not responding (i.e. power and eject), and your wireless controller will not connect/turn on the unit? Once you have ensured it is not a power supply fault, it is likely a problem with the RF board.



TOOLS:

- [Metal Spudger](#) (1)
- [Spudger](#) (1)
- [TR9 Torx Security Screwdriver](#) (1)



PARTS:

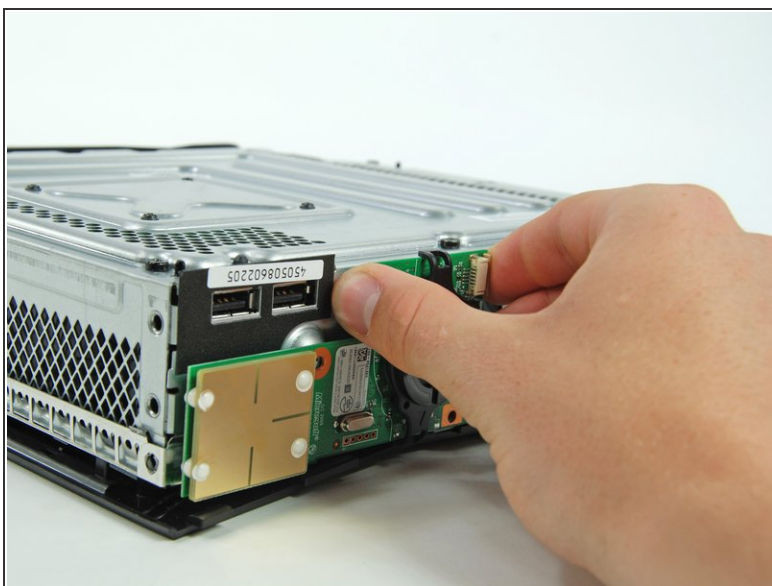
- [Xbox 360 S RF Module](#) (1)

Step 1 — RF Module



- Remove the two 5.6 mm T8 Torx screws securing the RF module to the metal case.

Step 2



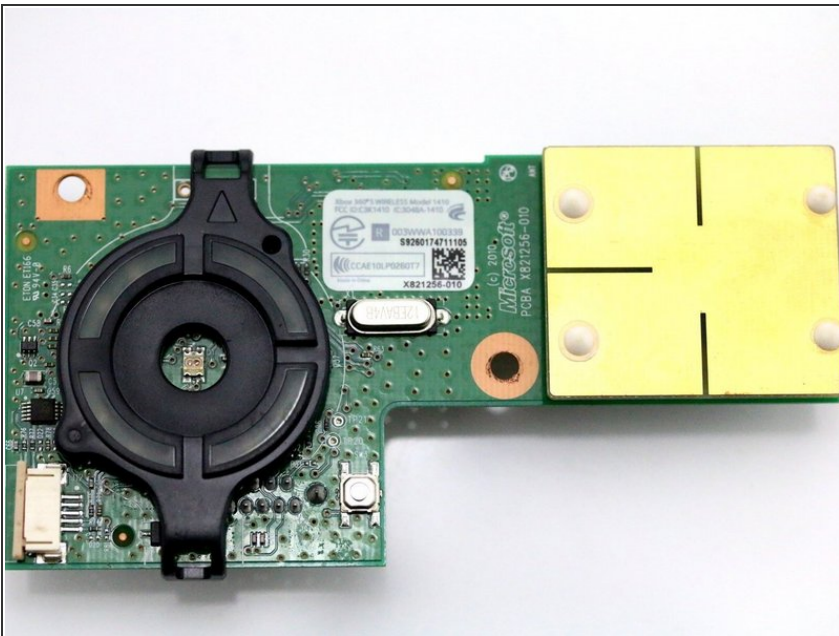
- ⓘ The RF module is still connected to the Xbox by a large USB-type connector.
- Pull the board directly away from the Xbox to remove it.

Step 3 — PSU Check



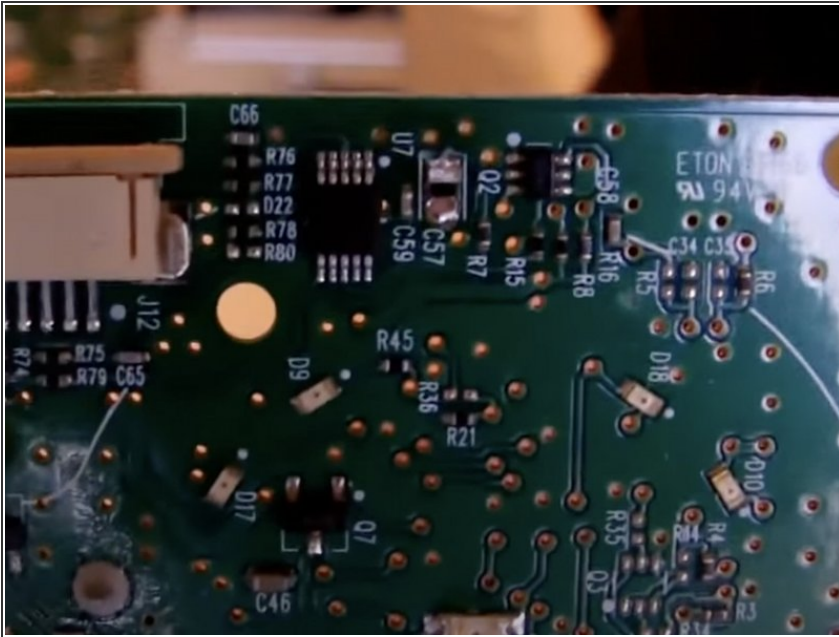
- First things first, check the power supply. When plugged into the wall but not plugged into the unit, it should emit an orange light (showing that it is in standby mode). This light should stay orange when plugged into the unit. If it turns red, you likely have a PSU fault.

Step 4 — Faceplate Check



- To access the RF board, follow the RF module replacement guide for the unit, linked [here](#).
- First try disconnecting and reconnecting the ribbon cable for the faceplate. If this doesn't affect the issue, continue with the guide.

Step 5 — RF Board Repair



- The safest solution is to purchase a new RF Board, but there is a more immediate solution available
- Capacitor C57 on the RF Board frequently shorts out causing the entire board to fail, but it is not strictly necessary for the board to function. You can either desolder the capacitor or pop it off with a screwdriver. Just be careful not to damage any other capacitors
- Note: the buttons on the board still may not work, the console may occasionally make eject or power sounds, but it will function with a wireless controller and turn on/off accordingly.
- EMBEDONIX has a video more carefully describing this process, linked [here](#).

To reassemble your device, follow these instructions in reverse order.