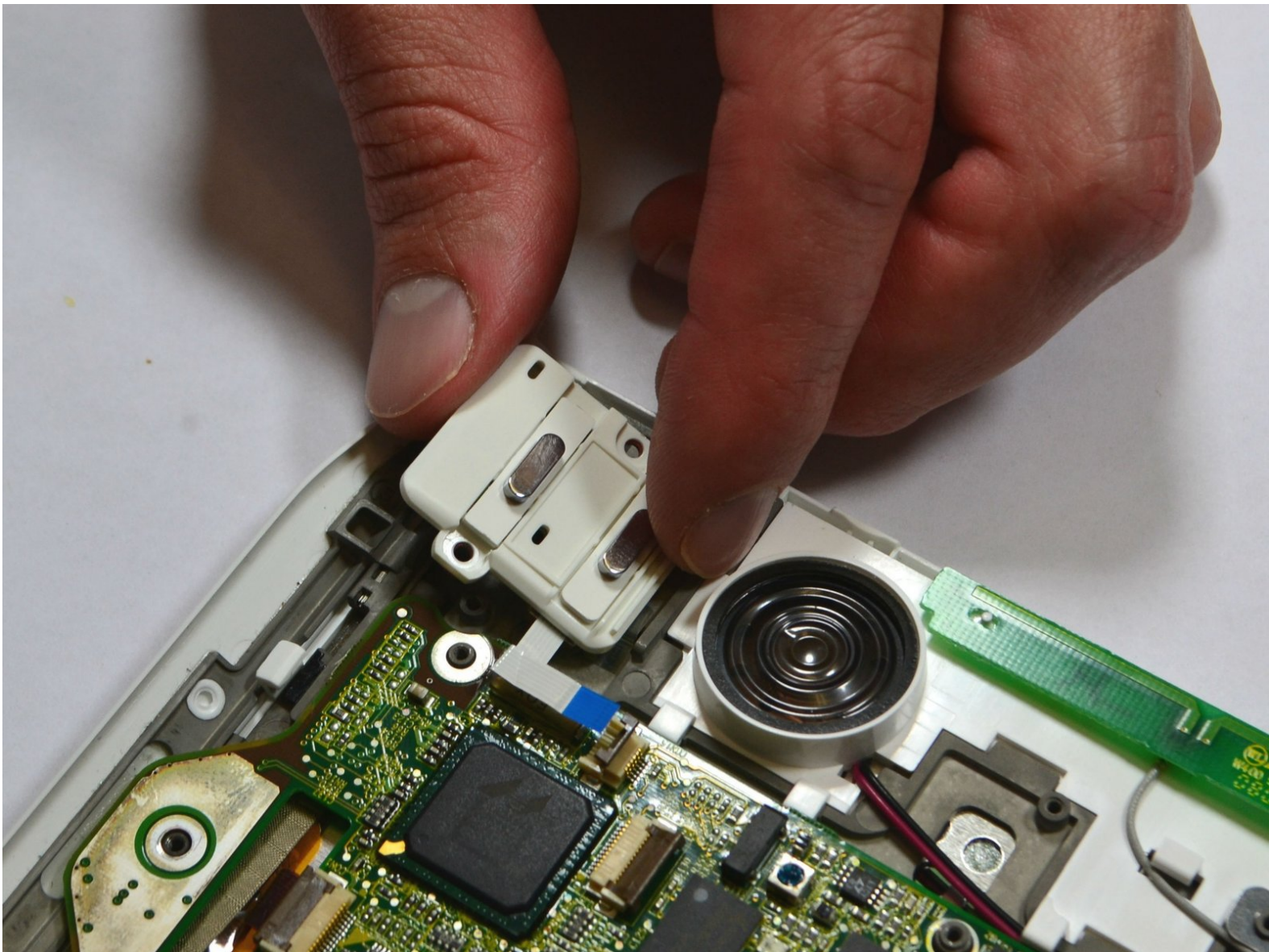




Kindle 1st Generation ON/OFF Power and Wifi Switches Replacement

This guide goes through the process to replace the ON/OFF Power and Wifi Switches on the First Generation Amazon Kindle.

Written By: Samantha Manning



This document was generated on 2020-11-28 02:58:26 AM (MST).

INTRODUCTION

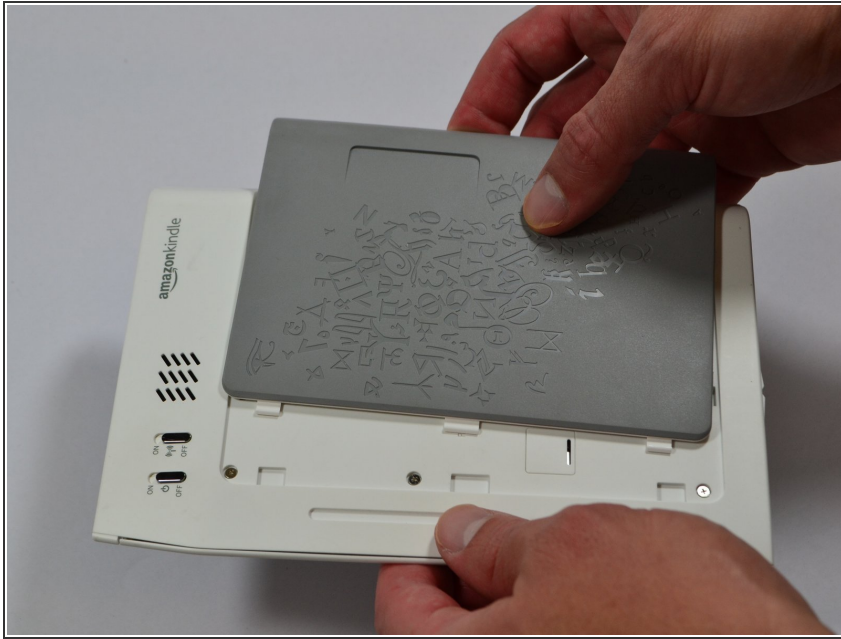
This guide goes through the process to replace the ON/OFF Power and Wifi Switches on the First Generation Amazon Kindle.



TOOLS:

- [iFixit Opening Tools](#) (1)
 - [Phillips #00 Screwdriver](#) (1)
 - [Spudger](#) (1)
-

Step 1 — Battery



- Slide the grey plastic cover laterally off the back of the device.

Step 2



- Use a plastic opening tool to lift the battery on the side closest to the edge of the device.
- Unplug the battery from the device by pinching the white connector and pulling.

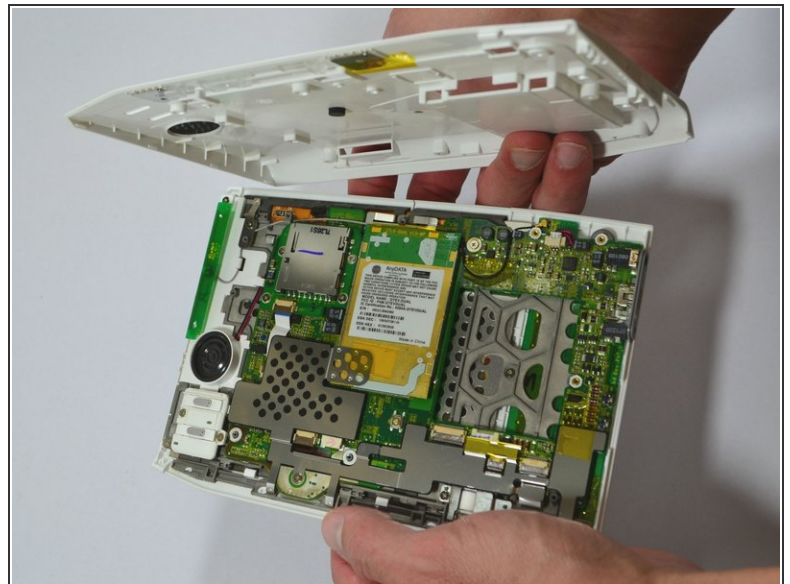
⚠ Do not yank the battery or try to disconnect the battery by pulling the wires.

Step 3 — ON/OFF Power and Wifi Switches



- Unscrew eight (8) Phillips #00 screws (3 mm).

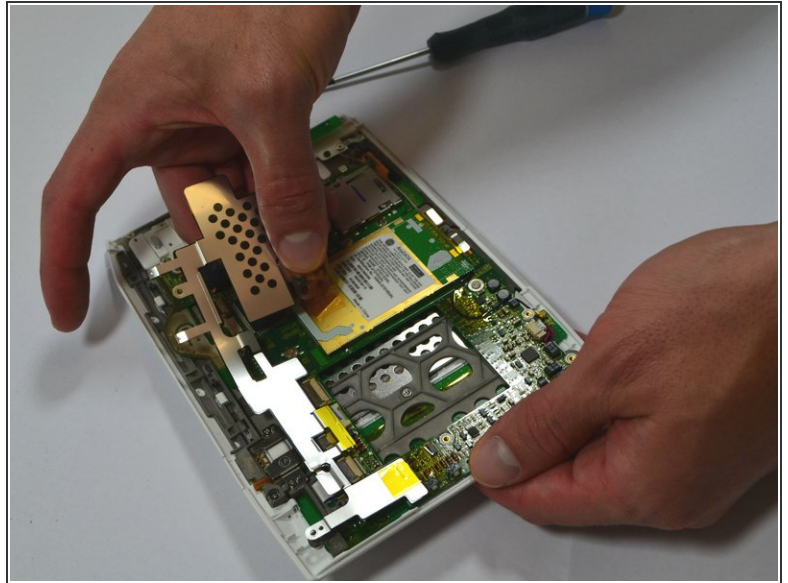
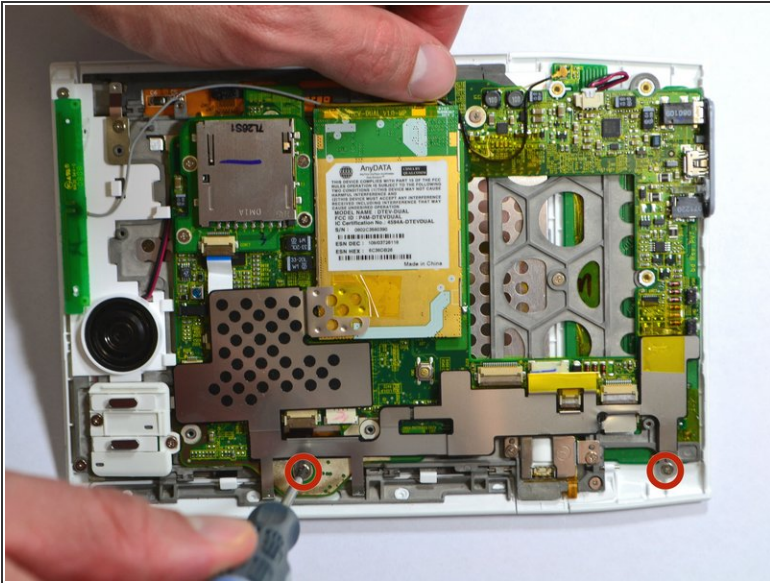
Step 4



- Start at one side of the device. Use a soft plastic prying tool to separate the casing of the device. Slowly work your way around the entire device.

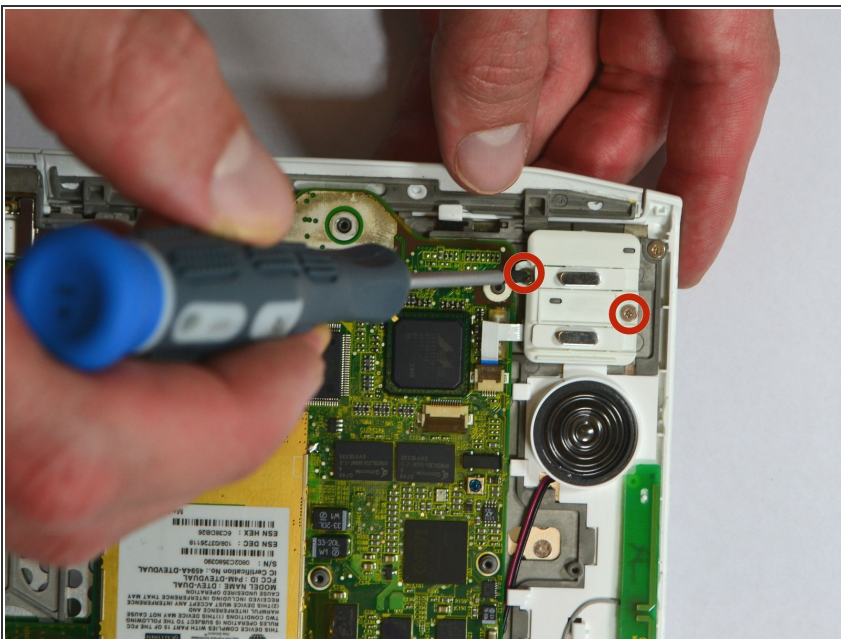
⚠ Avoid prying between the buttons and the device. This could cause damage to the buttons.

Step 5



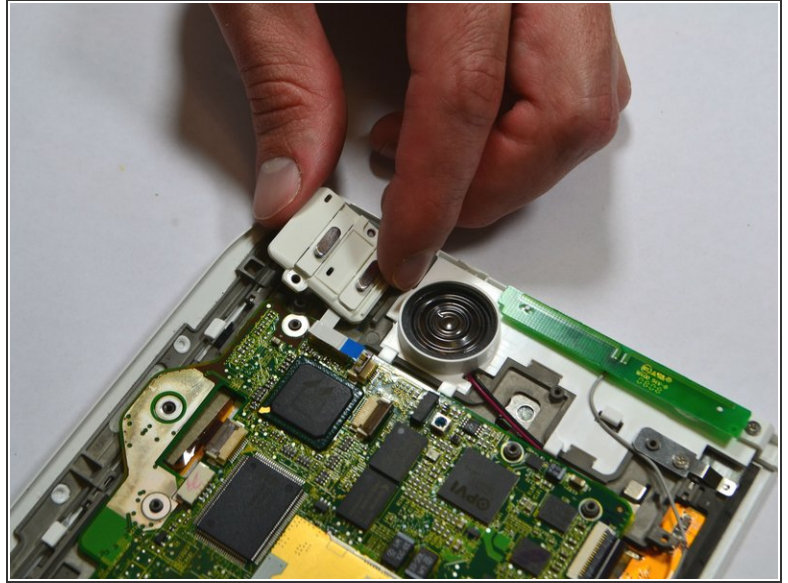
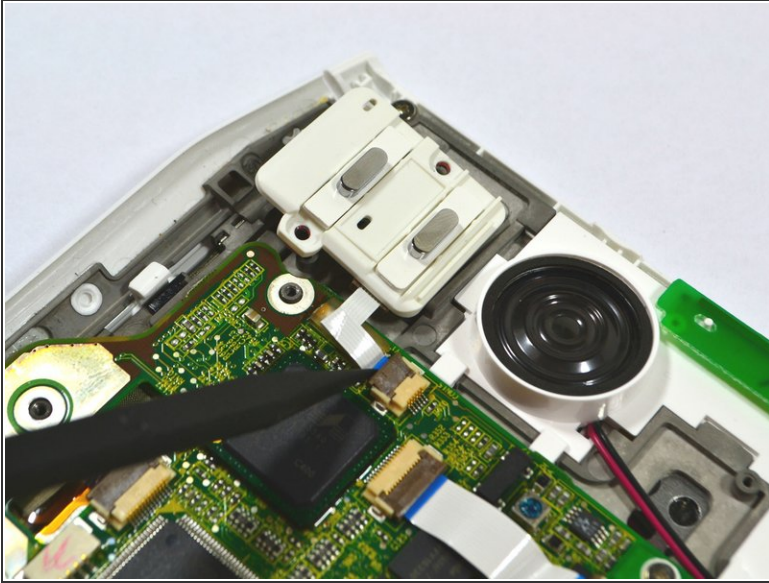
- Unscrew the two (2) Phillips #00 screws (3 mm) which fasten the metal casing shield.
- Slowly remove the metal casing shield by lifting it and carefully peeling up the tape.

Step 6



- Remove the two (2) Phillips #00 screws (3 mm) which fasten the ON/OFF Power and Wifi Switches to the device.

Step 7



- Lift the flap attaching the blue and white ribbon cable to the motherboard by lifting it vertically with the pointed-end of the spudger.
- ⓘ The flap is connected via a hinge. Once you lift the flap, it will stay up and the cable will be loose. Remember to snap it back down during reassembly.
- Carefully lift the ON/OFF Power and Wifi Switch vertically from the device motherboard.

To reassemble your device, follow these instructions in reverse order.