



Google Pixel 3 Back Cover Adhesive Installation

This repair guide was authored by the iFixit...

Written By: Chayton Ritter



INTRODUCTION

This repair guide was authored by the iFixit staff and hasn't been endorsed by Google. Learn more about our repair guides [here](#).

Follow this guide to correctly apply back cover adhesive to your Pixel 3 after a repair.

Before you begin, you should have already removed your Pixel's back cover and set it aside. Detailed instructions for this can be found [here](#).



TOOLS:

- [Tweezers](#) (1)
- [Spudger](#) (1)
- [Cotton Swabs](#) (1)
- [Isopropyl Alcohol \(90% or Greater\)](#) (1)
- [Phillips #00 Screwdriver](#) (1)



PARTS:

- [Google Pixel 3 Rear Cover Adhesive - Genuine](#) (1)

Step 1 — Remove adhesive residue from the frame



- Pick and scrape away the old adhesive from the frame.
- Use a spudger to scrape away any lingering adhesive.
- ⚠ Don't use metal tools to scrape away adhesive as this will damage the frame.
- For best results, clean the area underneath the removed adhesive with 90% or greater isopropyl alcohol to prep the surface for the new adhesive.

Step 2 — Remove adhesive residue from the back cover



- Repeat the previous step for the back cover adhesive.
- ⚠ Don't use metal tools to scrape away adhesive as this will damage the back cover coating.
- ⚠ Don't use isopropyl alcohol near the rear camera bracket as it will damage its adhesive and foam.

Step 3 — Prepare the replacement adhesive



- Peel away the clear plastic lining to expose the frame side of the replacement adhesive.

Step 4 — Apply the adhesive

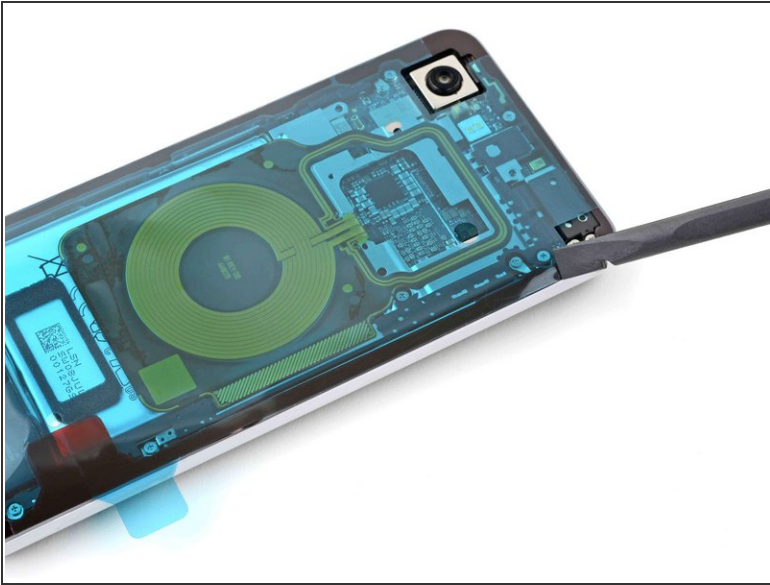


⚠ Be very careful during this step! The adhesive is very sticky and can't be repositioned once it sticks. Misaligned adhesive can lead to an improper seal.

- Lower the adhesive onto the frame.
- Use the rear camera and corners to properly align the adhesive.

This document was generated on 2022-11-25 11:08:27 PM (MST).

Step 5 — Secure the adhesive to the frame



- Use the flat end of a spudger or your fingernail to press down on the adhesive.
- Slide along the perimeter to secure the adhesive to the frame.

Step 6 — Peel away the outer plastic lining



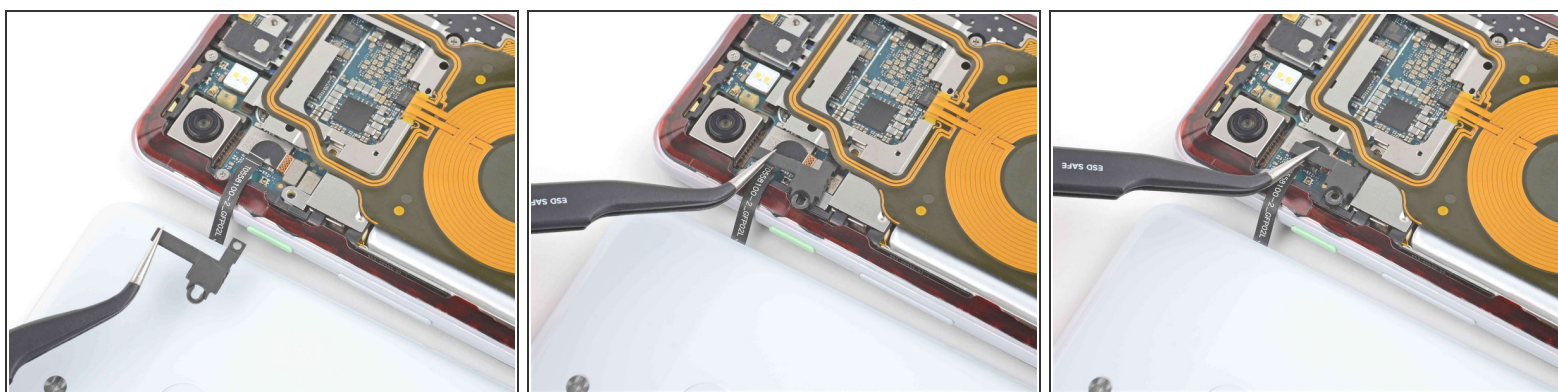
- Peel away the blue outer plastic lining on the back cover side of the adhesive.

Step 7 — Connect the fingerprint sensor cable



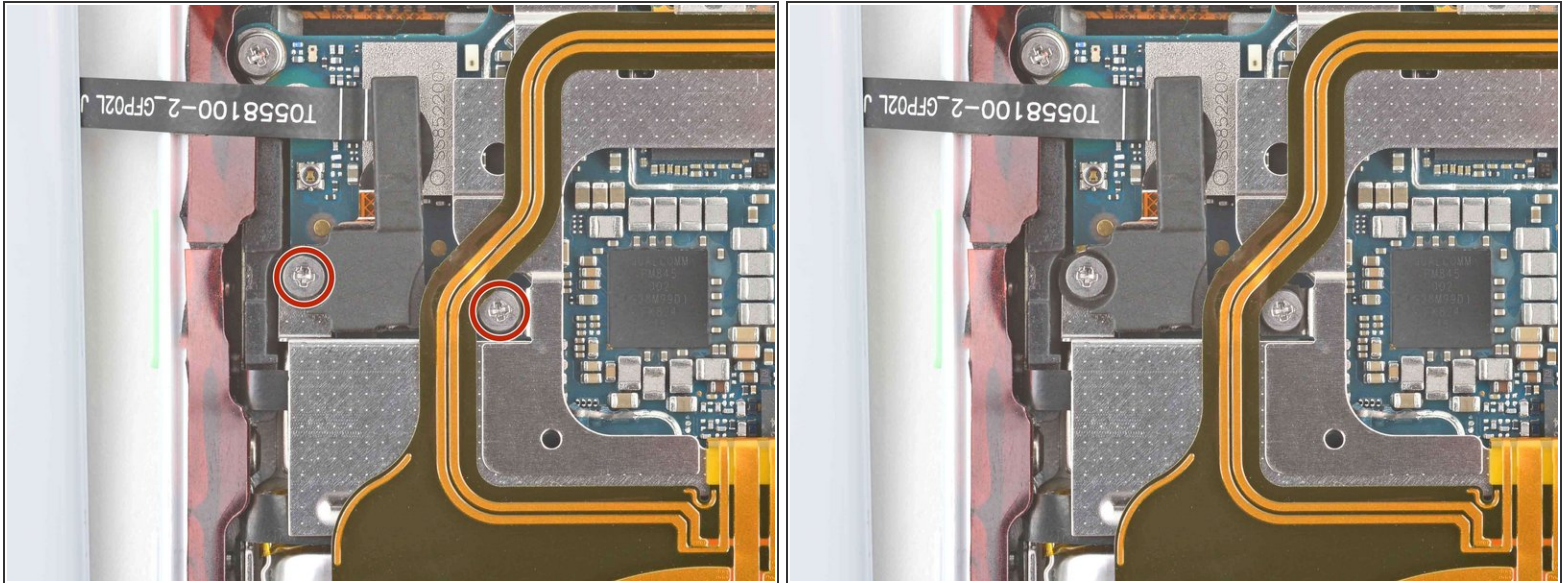
- Use tweezers or your fingers to position the fingerprint sensor cable over its connector on the motherboard.
- Use the flat end of a spudger or your finger to press down on the connector to secure it to the motherboard.

Step 8



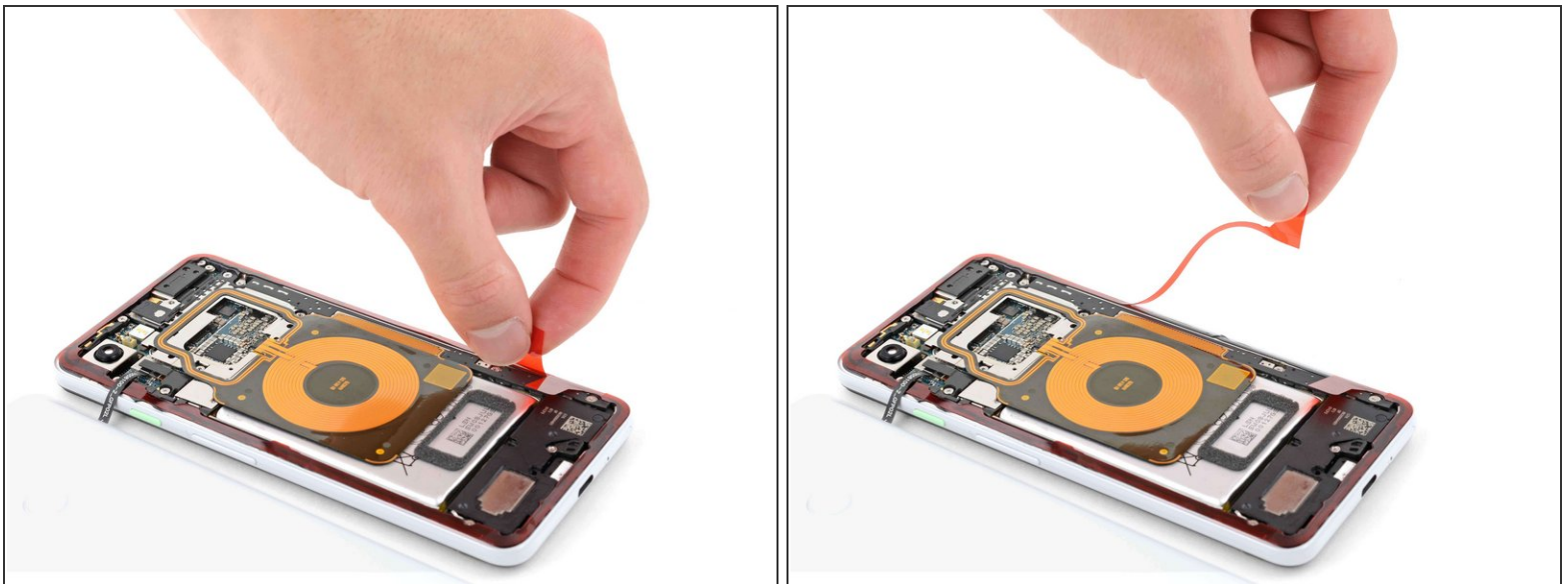
- Use tweezers or your fingers to place the bracket over the fingerprint sensor cable.

Step 9



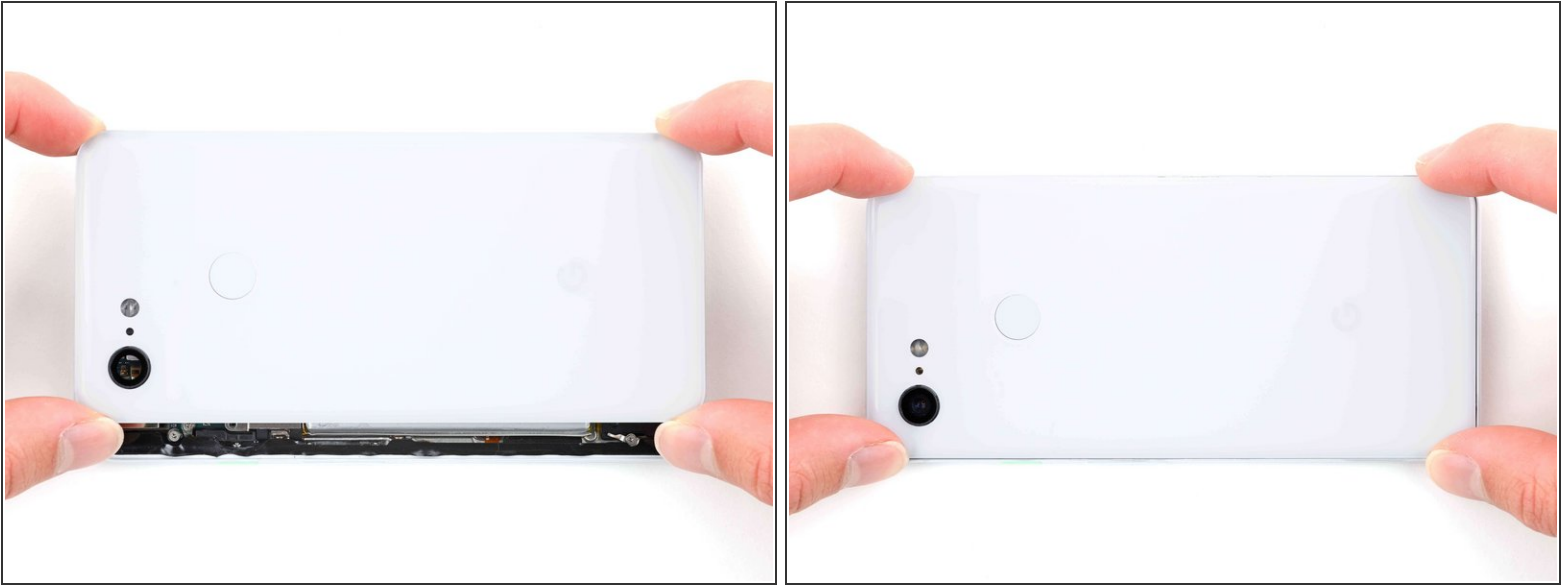
- Use a Phillips PH00 screwdriver to install the two 4.1 mm screws securing the bracket to the frame.

Step 10 — Peel away the remaining plastic lining



- Peel away the red plastic lining to expose the back cover side of the adhesive.

Step 11 — Secure the back cover to the frame



- Lower the back cover onto the frame.
- Press down on all edges of the back cover to secure it to the frame.
- ⓘ To help the adhesive bond more securely, heat the perimeter of the back cover and then place the phone face-down under a heavy stack of books for 30 minutes.

Repair didn't go as planned? Try some [basic troubleshooting](#), or ask our [Pixel 3 Answers community](#) for help.