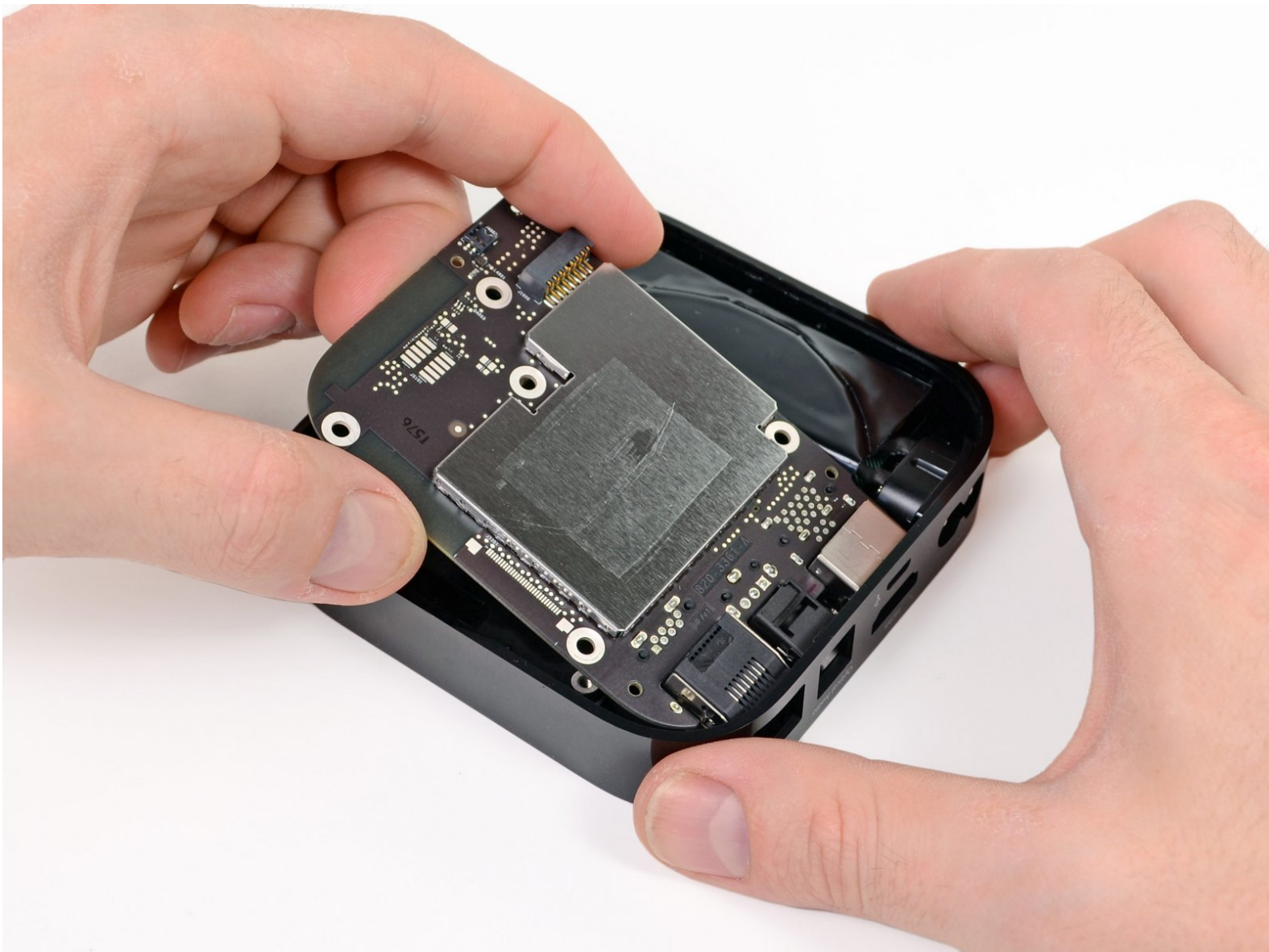




Apple TV 3rd Generation Logic Board Replacement

Written By: Vincent Monteil





TOOLS:

- [Metal Spudger Set](#) (1)
 - [Phillips #00 Screwdriver](#) (1)
-

Step 1 — Snap-on Base



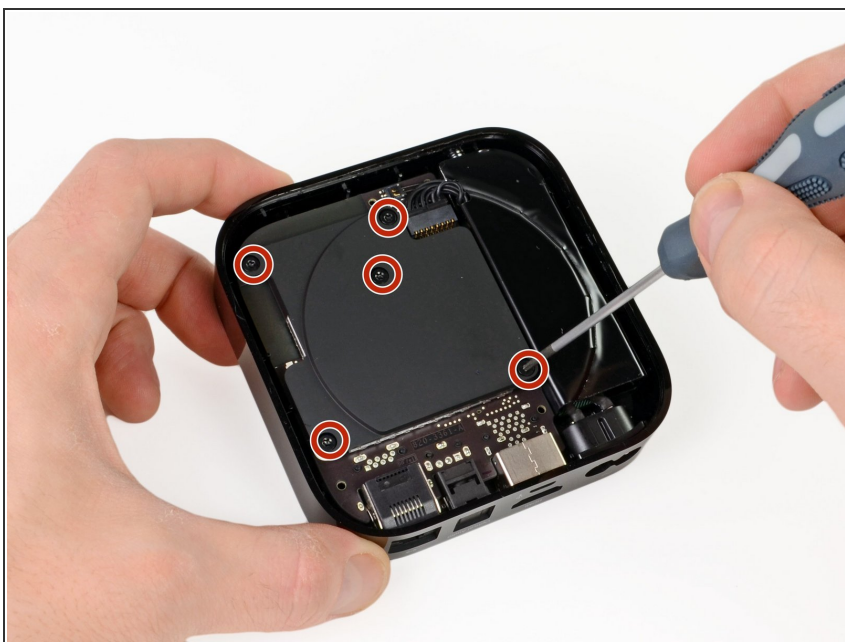
- As the device base is firmly clipped, insert two metal spudgers to gently release the first clips.

Step 2



- Continue releasing the last plastic clips with your hands taking care not to break any of the plastic elements attached to the base.

Step 3 — Logic Board



- Use a philips screwdriver to remove the 5 screws securing the metal heat sink. On Rev A (A1469) you need a T7 screwdriver

Step 4



- Disconnect the power supply connector from the logic board with a spudger.

To reassemble your device, follow these instructions in reverse order.