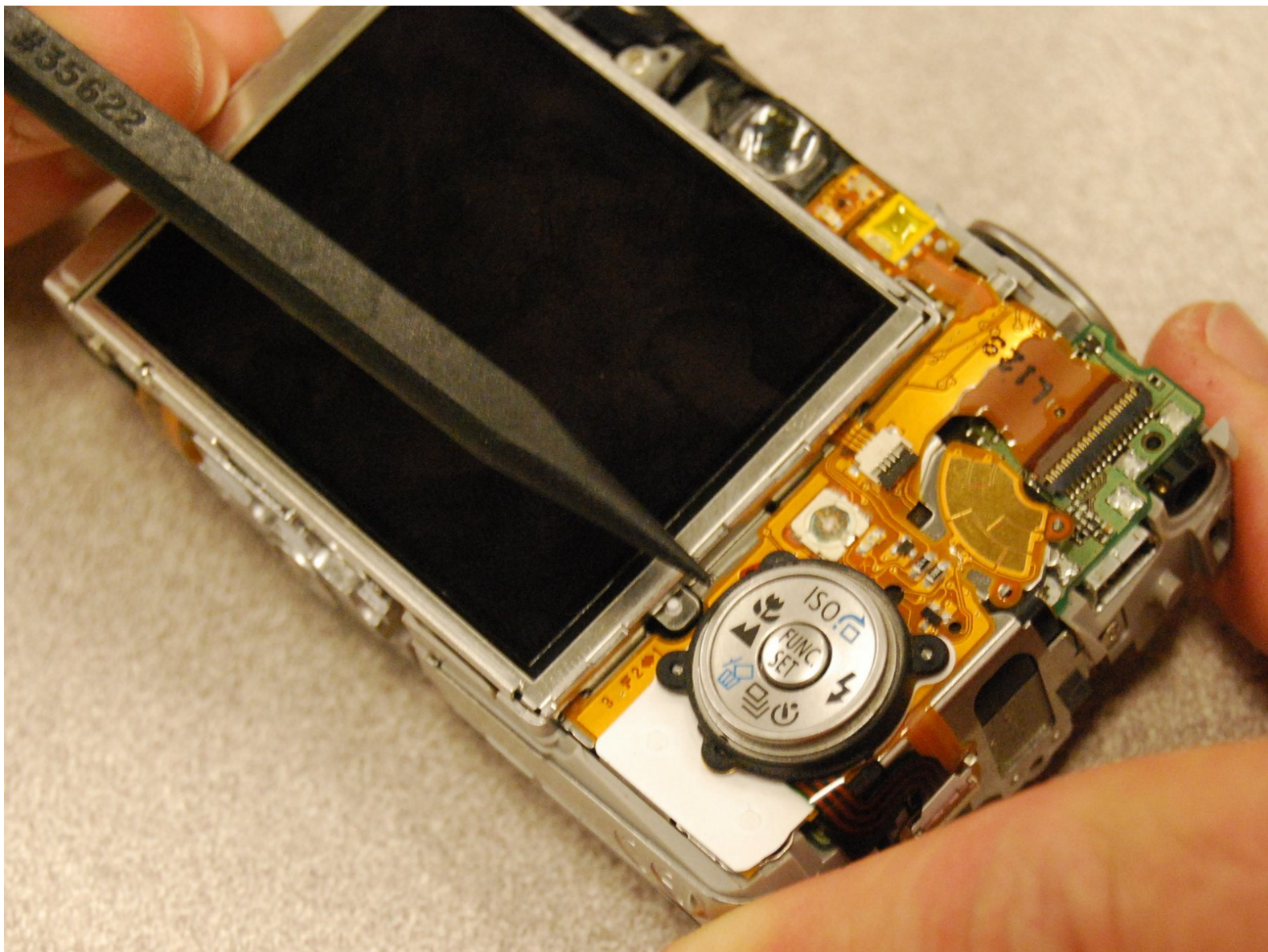




Canon PowerShot SD850 IS Function Set Button Replacement

Written By: iDeleted



INTRODUCTION

This manual is for replacing the function/set button located on the back of the camera.

TOOLS:

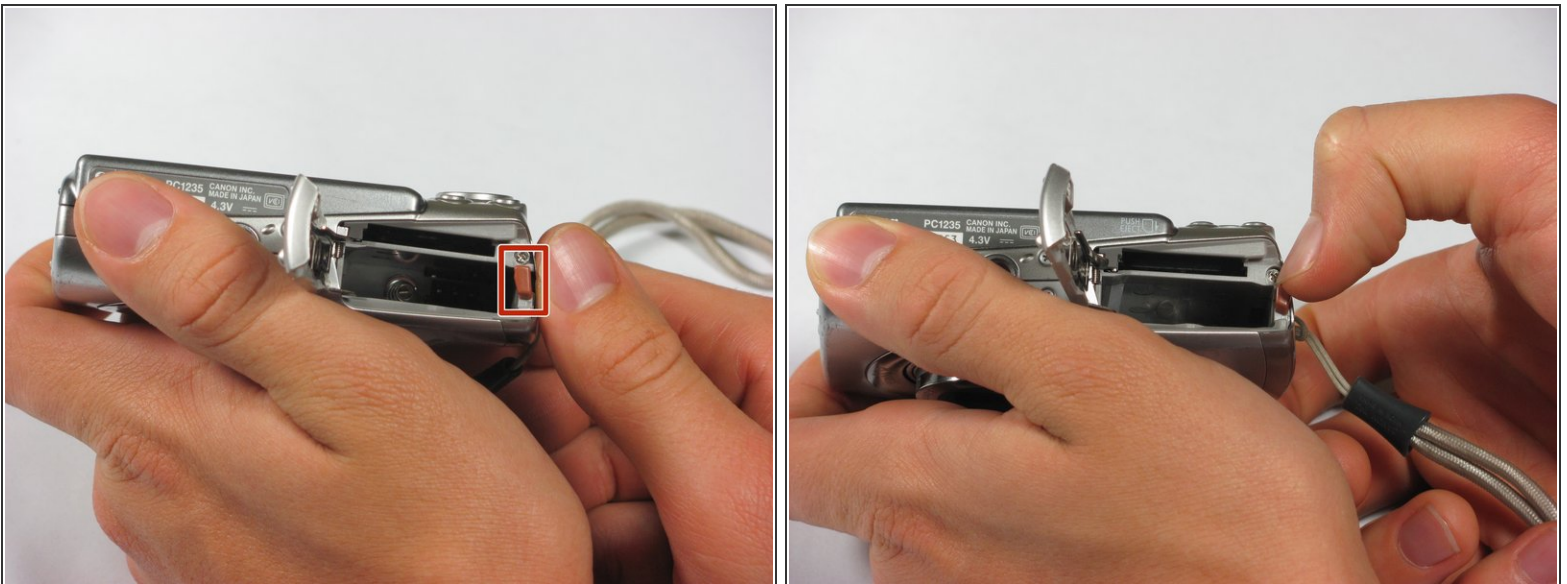
- [Phillips #00 Screwdriver](#) (1)
 - [Metal Spudger](#) (1)
 - [Phillips #0 Screwdriver](#) (1)
 - [Spudger](#) (1)
-

Step 1 — Battery



- Slide the light grey tab toward the edge of the camera using your fingernail.
- Pull the light grey tab up to open the door.
- ❗ These photos do not show the camera's memory card or battery, which should be visible inside.

Step 2



- Slide the small brown tab toward the edge of the camera using your fingernail.
- Let go of the brown tab when the battery pops up.
- Grab battery and pull straight up to remove from holder.

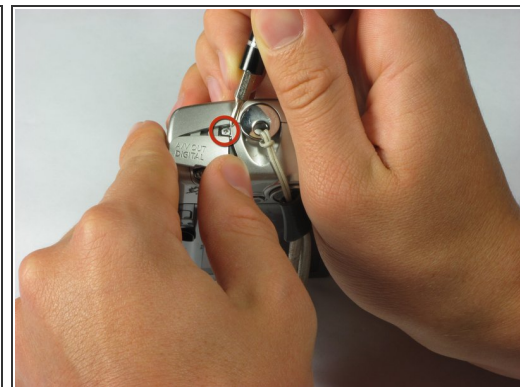
🔑 When inserting the battery, orient it so that the terminals connect.

Step 3 — Case



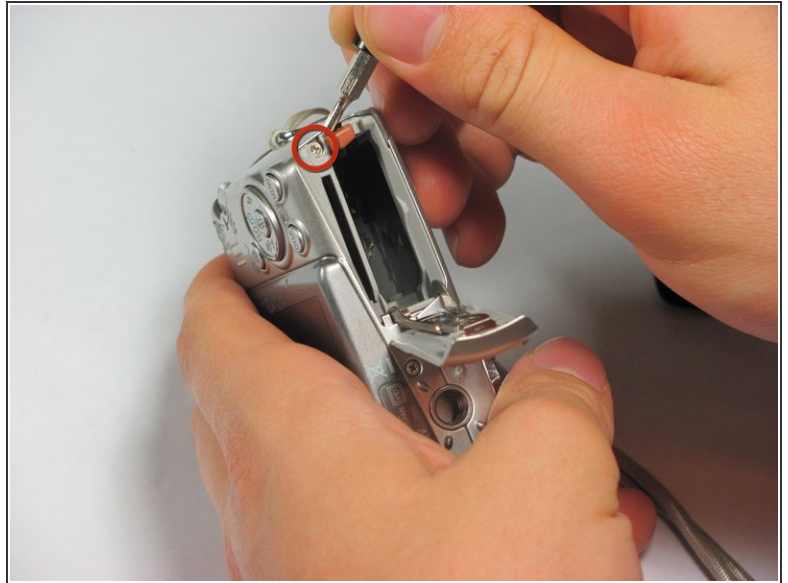
- Remove the following 4 screws:
 - Two 2.8 mm Phillips #00 at the bottom of the camera.
 - Two 2.75 mm Phillips #00 on the opposite side of the wrist strap.

Step 4



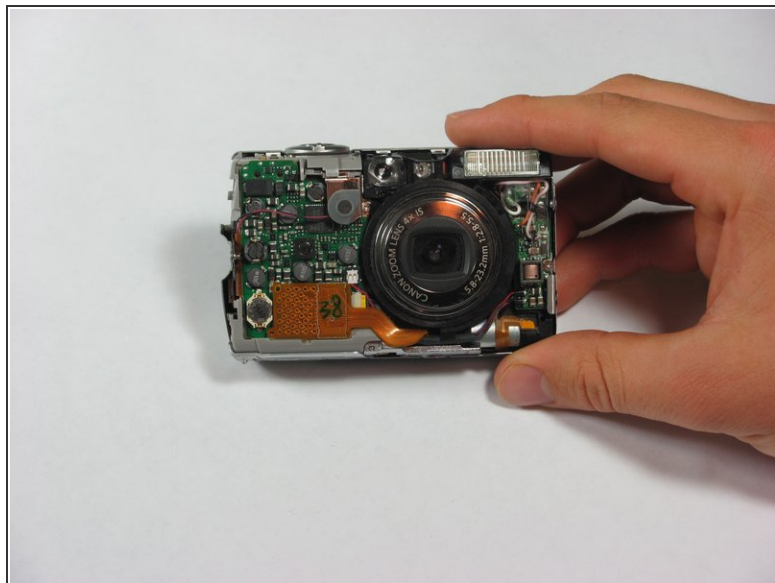
- Open the A/V OUT DIGITAL flap on the side of the wrist strap.
- Remove the 2.75 mm Phillips #00 under the A/V OUT DIGITAL flap on the side of the wrist strap.

Step 5



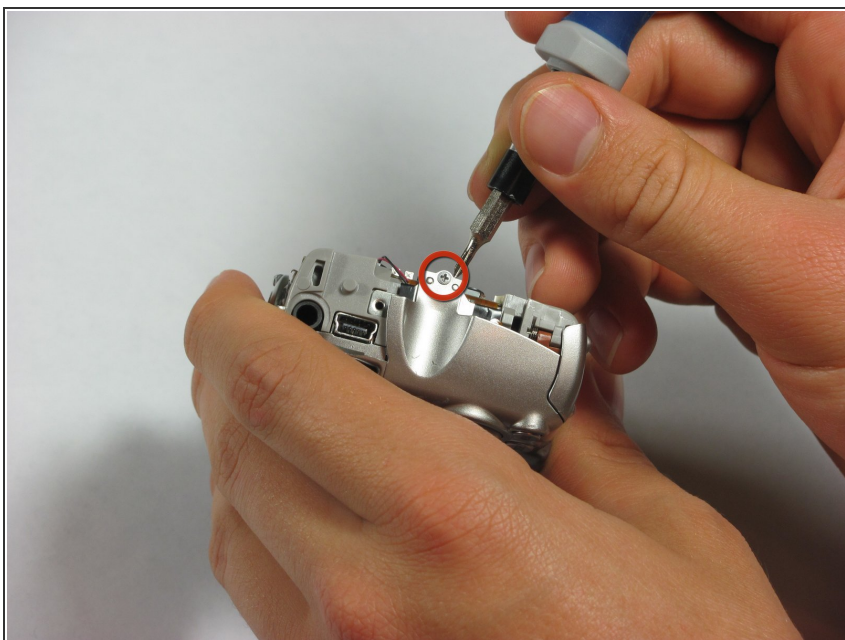
- On the bottom of the camera, use your fingernail to slide the light gray tab towards the edge of the camera.
- Slide light gray door and pull up to open the door.
- Remove the 8.35 mm Phillips #00 next to the brown tab that holds the battery.

Step 6



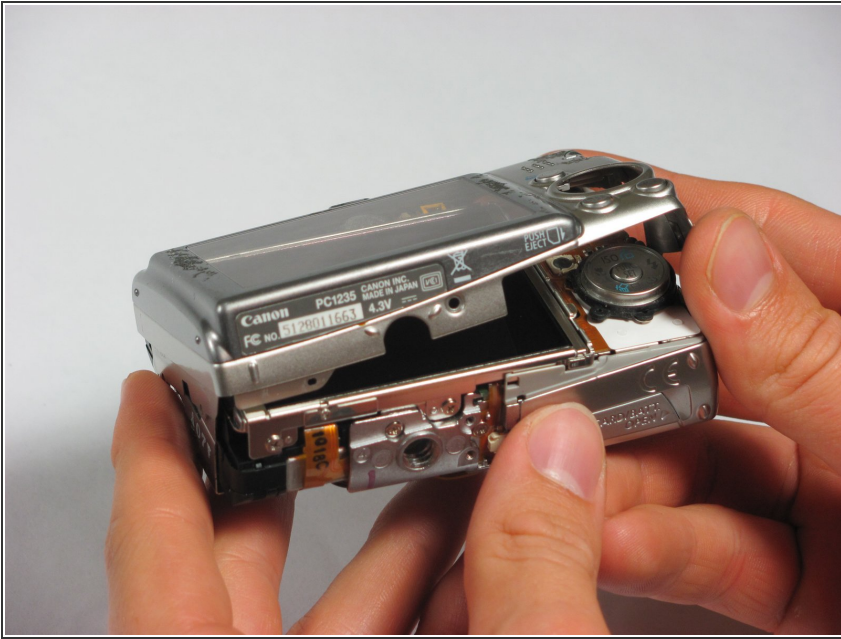
- Gently pull the front cover straight out from the camera. This will expose the wiring on the front of the camera.

Step 7



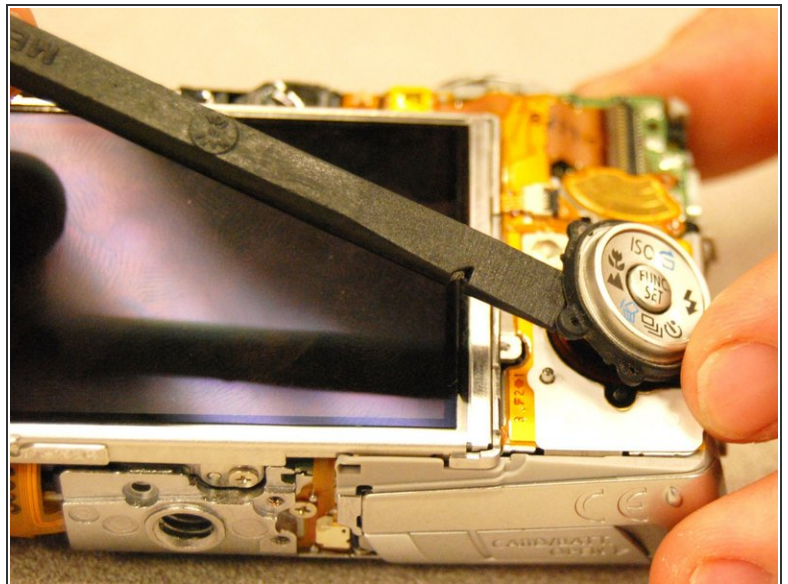
- Remove the 2.75 mm Phillips #00 next to A/V OUT DIGITAL.

Step 8



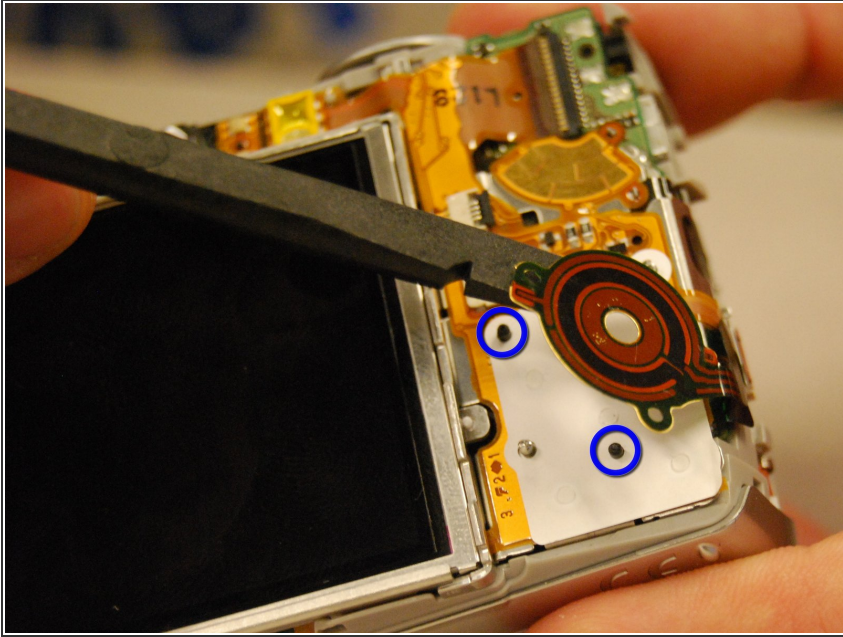
- Slide the back casing (with the screen protector) off to reveal the LCD and back wiring.

Step 9 — Function Set Button



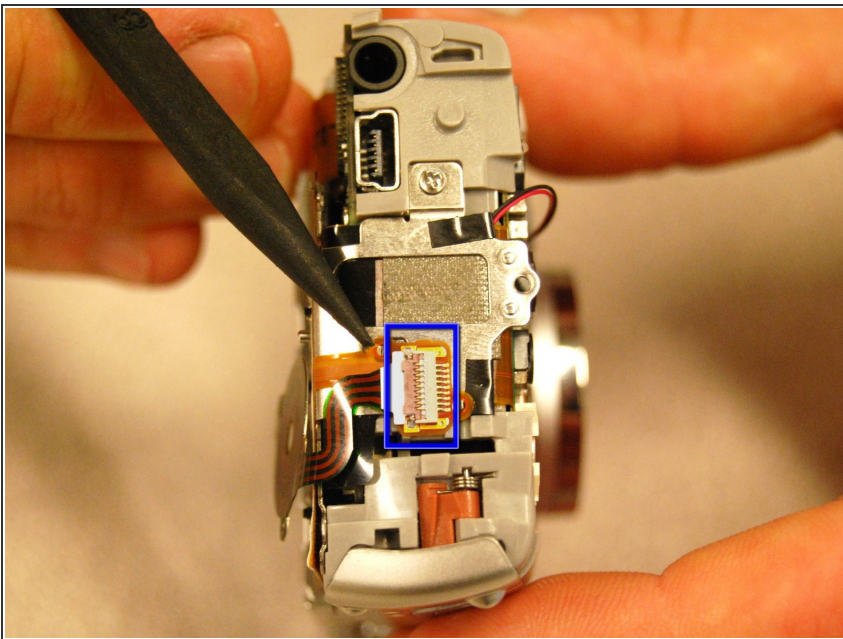
- Identify and remove the plastic function set button. Do this by gently prying up as indicated in the photo.

Step 10



- Lift the function set button ribbon cable from the two guide pins.

Step 11



- Remove the ribbon cable by lifting on the flat tab and pulling the ribbon cable from the connection.

To reassemble your device, follow these instructions in reverse order.