



Samsung Galaxy Note II Front Facing Camera Assembly Replacement

Use this guide to replace or remove e...

Written By: Sam Goldheart



INTRODUCTION

Use this guide to replace or remove the front-facing camera from a Samsung Galaxy Note II.



TOOLS:

[iFixit Opening Tool](#) (1)

[Phillips #00 Screwdriver](#) (1)



PARTS:

[Galaxy Note II Front Camera Bracket](#) (1)

[Galaxy Note II Front Camera](#) (1)

Step 1 — Stylus



- Grasp the end of the stylus and remove it from its slot in the midframe.

Step 2 — Rear Case



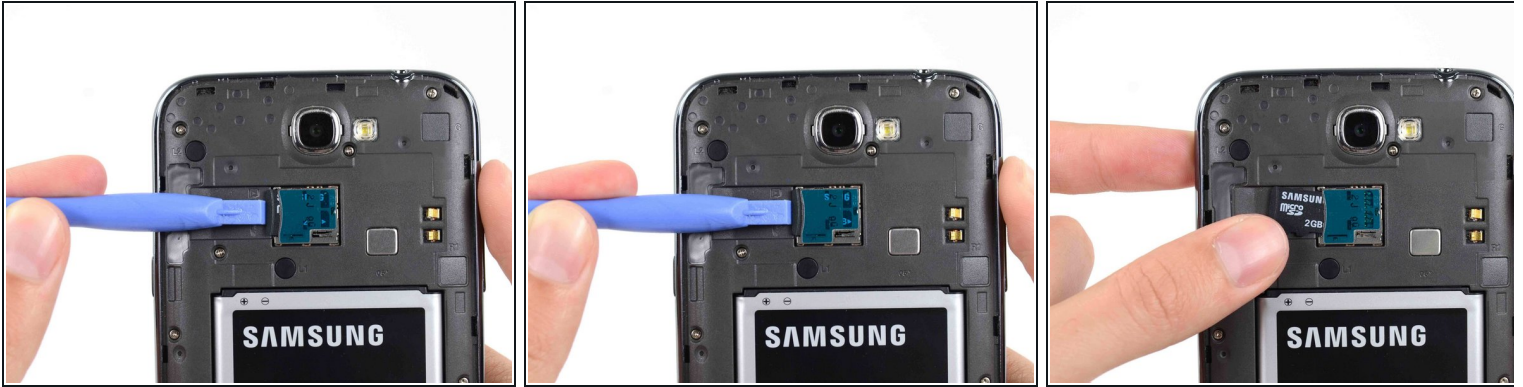
- Pry with a plastic opening tool, or your fingernail, in the divot to the left of the rear-facing camera, near the power button.

Step 3



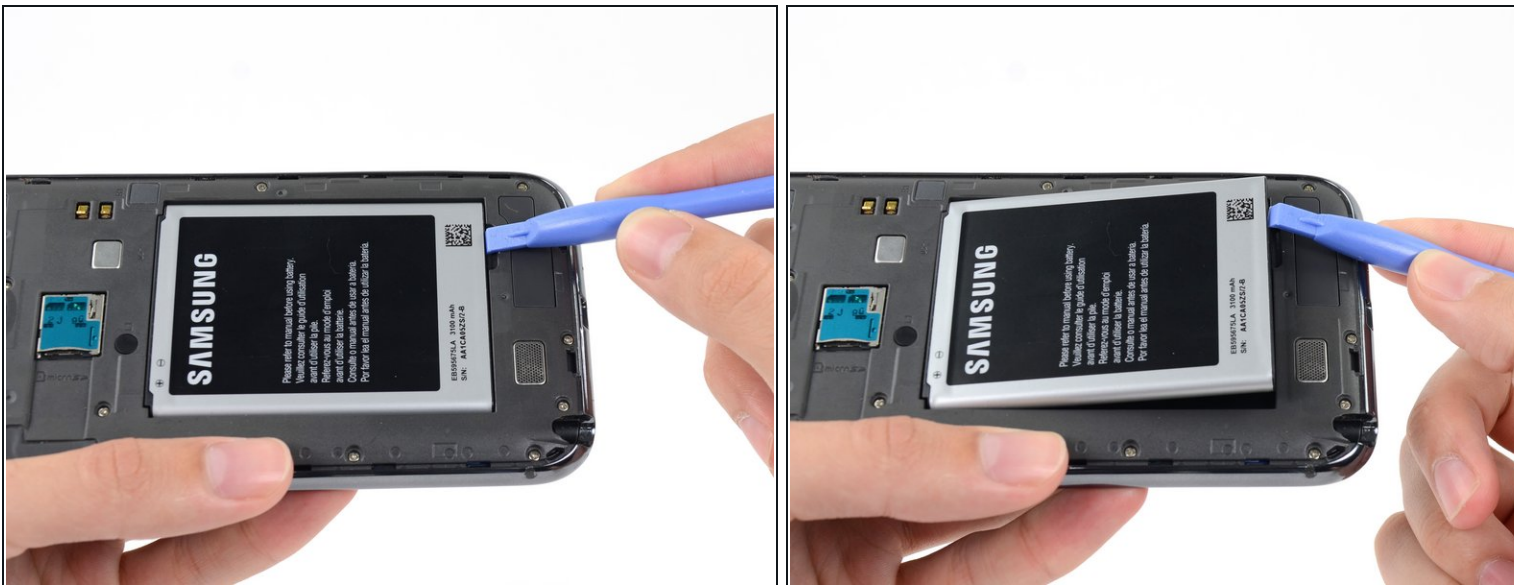
- Lift the rear case by the corner nearest the divot and remove it from the phone.

Step 4 — MicroSD Card



- If you have an SD card inserted, use the flat end of a spudger, or your fingernail, to press the microSD card slightly deeper into its slot until you hear a click.
 - After the click, release the card and it will pop out of its slot.
 - Remove the microSD card.
- ☒ For reassembly, push the microSD card into the slot until it clicks in place.

Step 5 — Battery



- Insert a plastic opening tool, or your finger, into the notch of the battery compartment and lift the battery upward.

Step 6



- Remove the battery from the midframe.

Step 7 — Midframe



- Remove the eleven 4.0 mm Phillips #00 screws securing the midframe to the display assembly.

Step 8



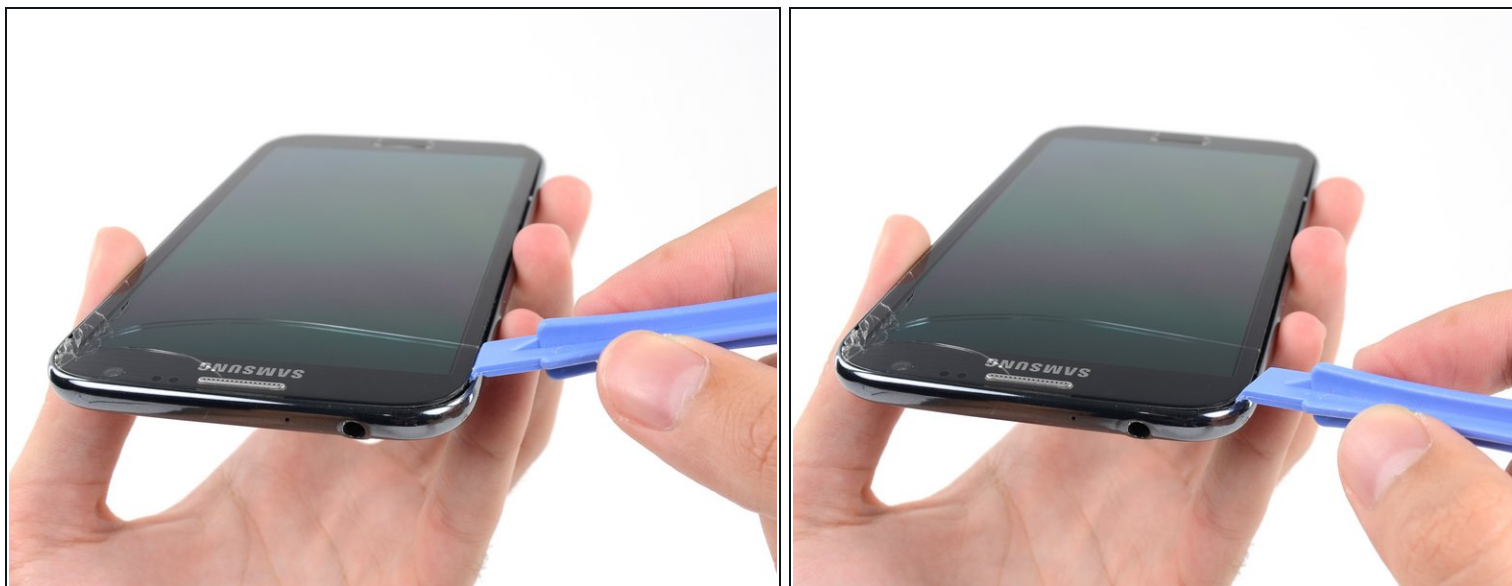
- Insert your plastic opening tool between the midframe and front panel assembly on the side of the phone.
- Slide the plastic opening tool down the seam.

Step 9



- Continue to run the plastic opening tool down the seam.

Step 10



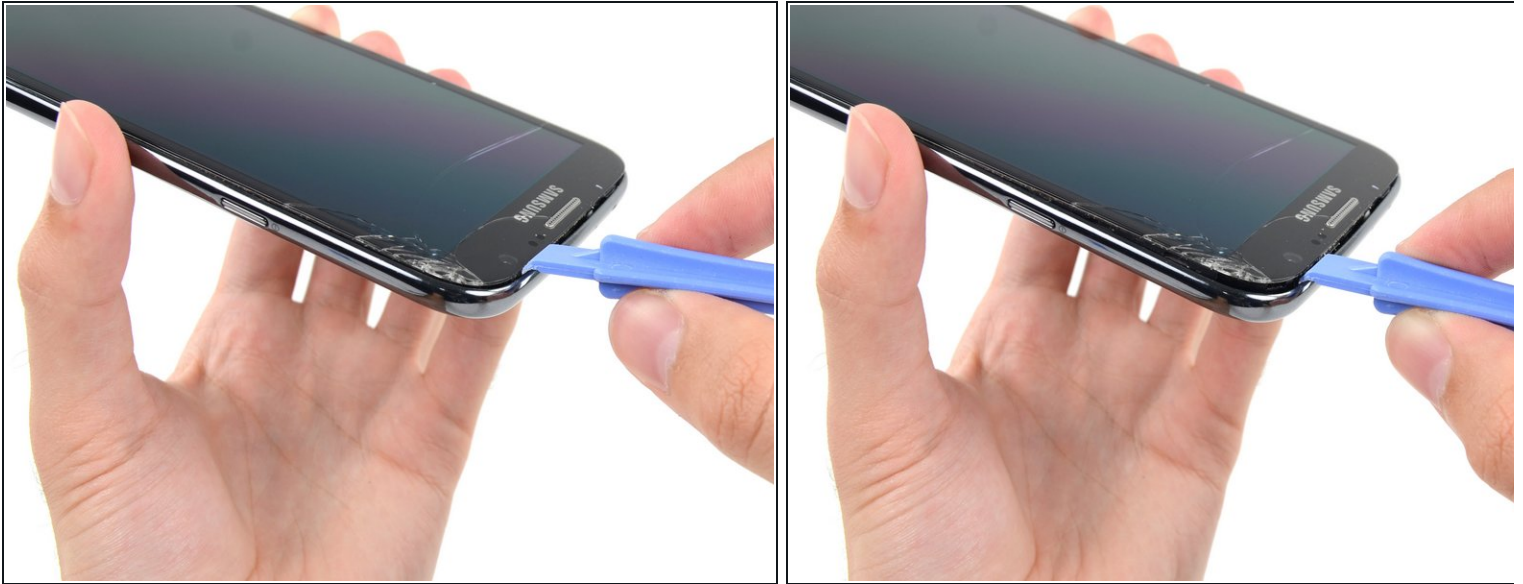
- Carefully pry around the corner with a plastic opening tool.

Step 11



- Pry along the top of the phone with a plastic opening tool.

Step 12



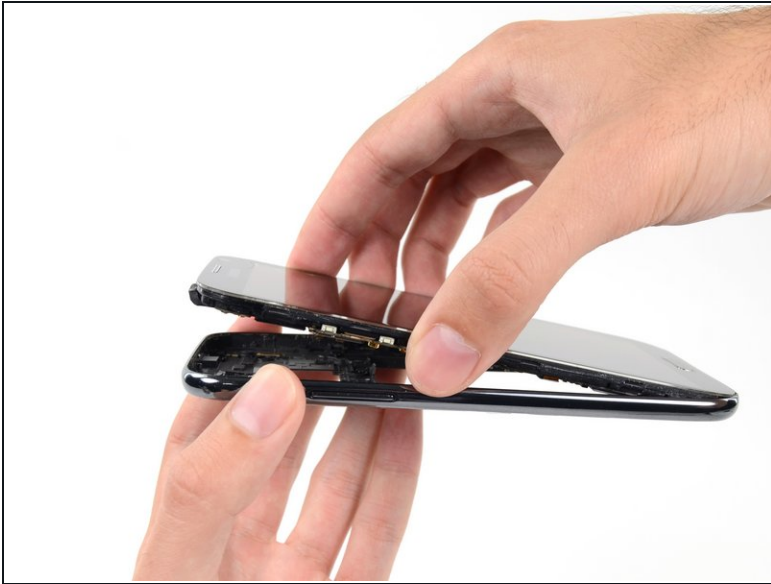
- Push the plastic opening tool down to free the corner of the midframe from the display assembly.

Step 13



- Free the clips along the power button side of the phone.
- Lastly, free the two clips along the top and bottom edge of battery compartment.

Step 14



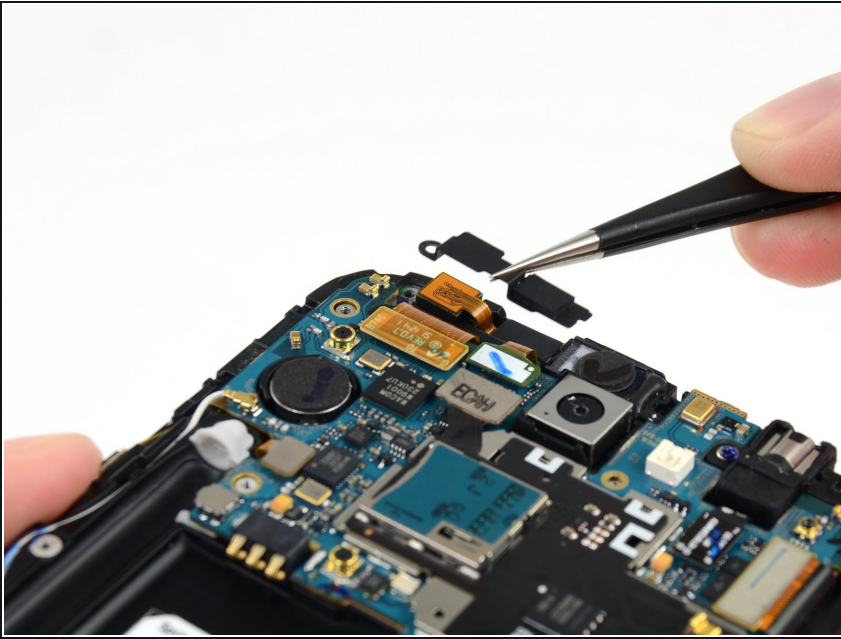
- Lift the display assembly out of the midframe.

Step 15 — Front Facing Camera Assembly



- Remove the 3mm Phillips #00 screw from the front-facing camera bracket.

Step 16



- Remove the front-facing camera bracket.

Step 17



- Use the flat end of a spudger to disconnect the front-facing camera connector.

Step 18



- Remove the front-facing camera.

To reassemble your device, follow these instructions in reverse order.