



# iMac Intel 21.5" EMC 2544 Logic Board Assembly Replacement

Prereq only.

Written By: Sam Goldheart



# INTRODUCTION

Prereq only.

---

## TOOLS:

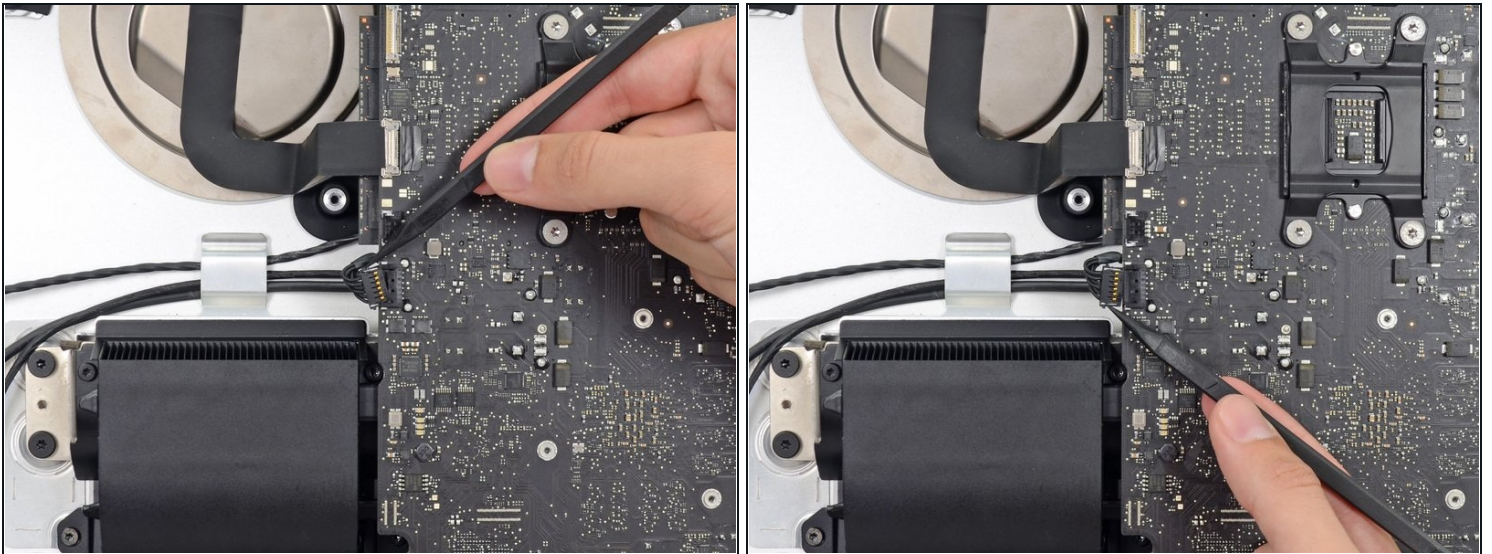
TR10 Torx Security Screwdriver (1)

TR8 Torx Security Screwdriver (1)

Spudger (1)

---

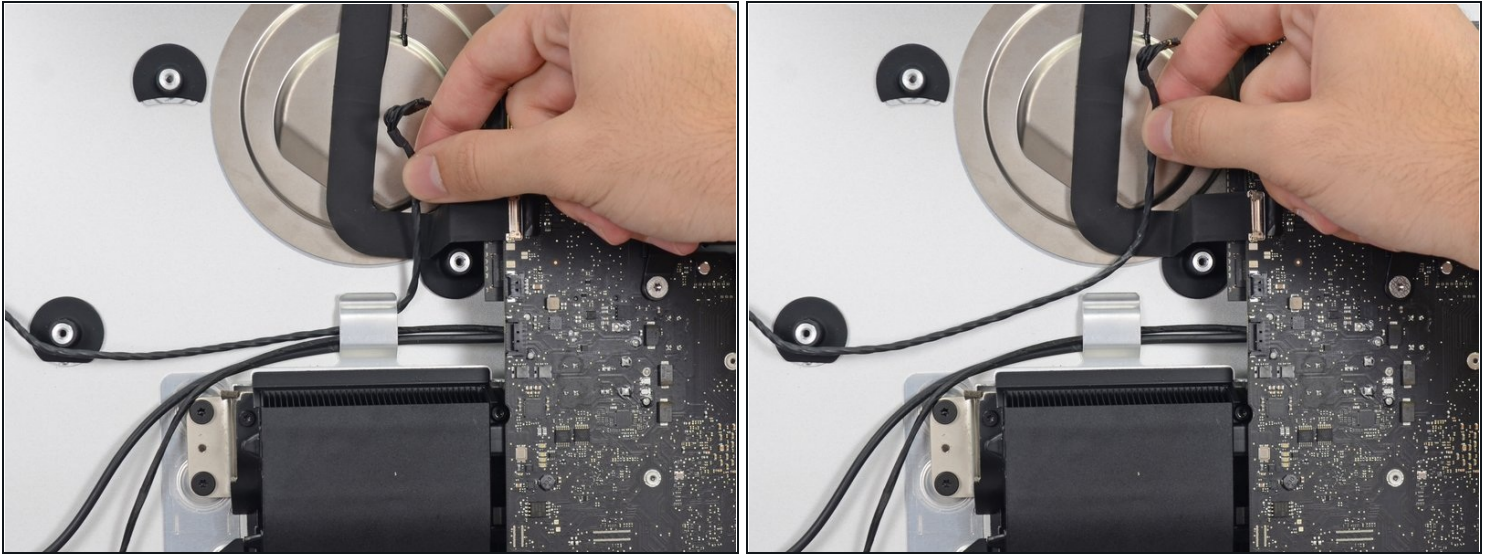
## Step 1 — Logic Board Assembly



- Push on each side of the left speaker cable connector with the tip of a spudger and gently "walk" it out of its socket.

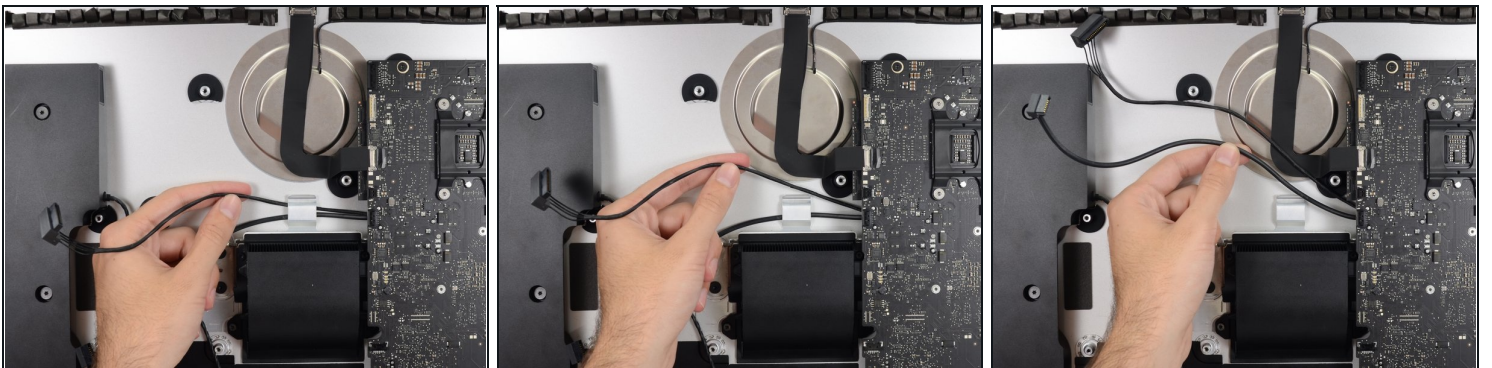


## Step 2



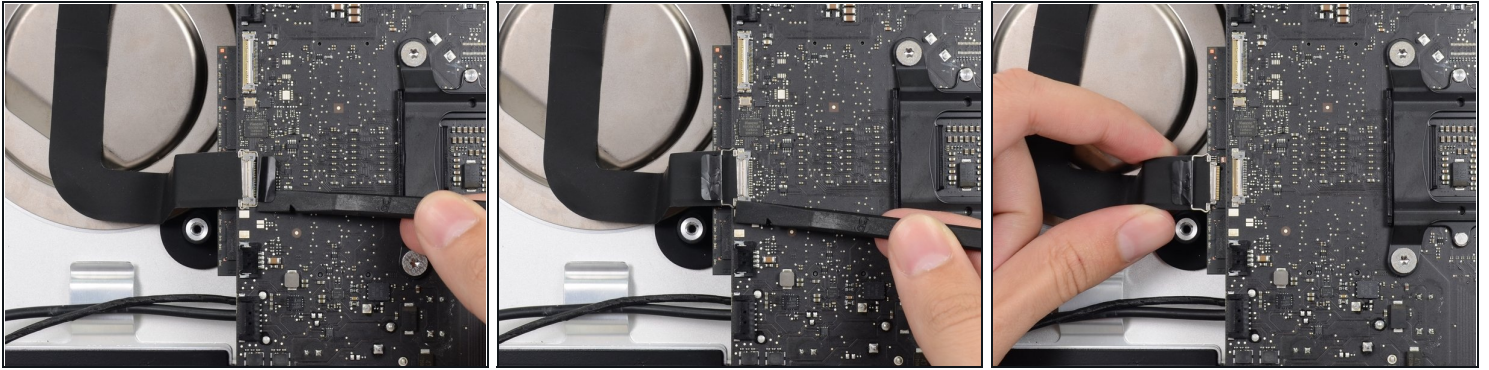
- De-route the left speaker cable by pulling it straight up out of the retaining clip in the back of the rear enclosure.

## Step 3



- In a similar fashion as the previous step, de-route the SATA data and power cables up out of the retaining clip.

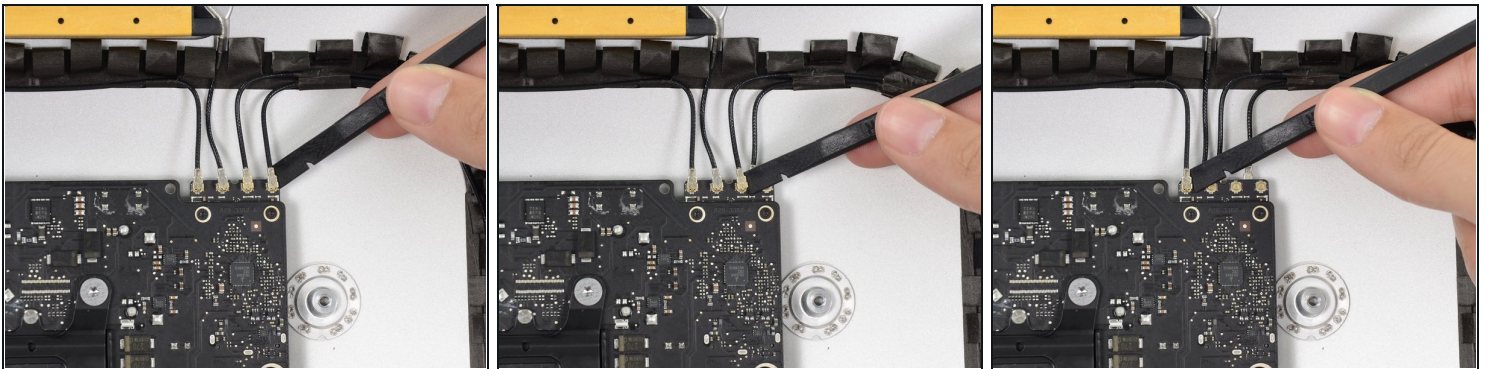
## Step 4



- Use the flat edge of a spudger to flip up the metal retaining bracket on the iSight camera cable connector.
- Pull the iSight camera cable straight out of its socket on the logic board.

⚠ This is a delicate connector that can be easily damaged.

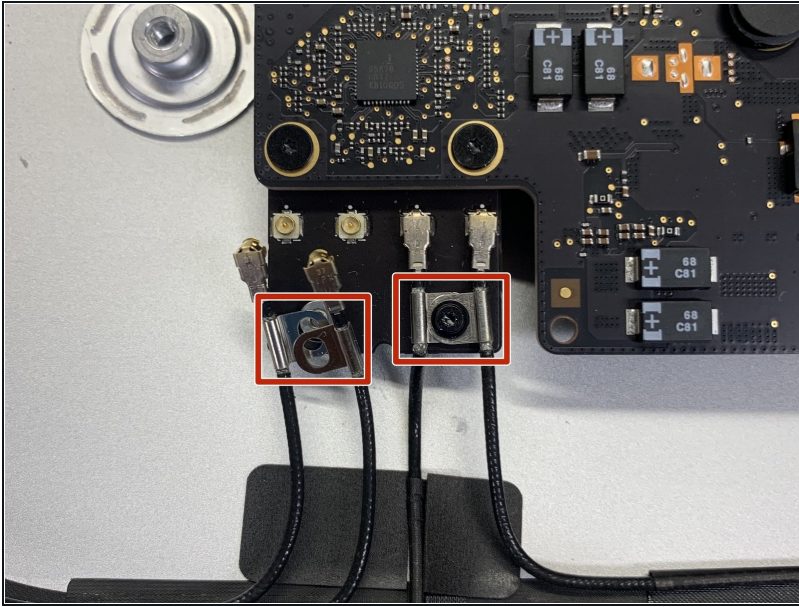
## Step 5



- Use the flat edge of a spudger to disconnect each of the four antenna connectors from the AirPort/Bluetooth card.
- ☑ Note the original positions for each connector when reconnecting the cables.

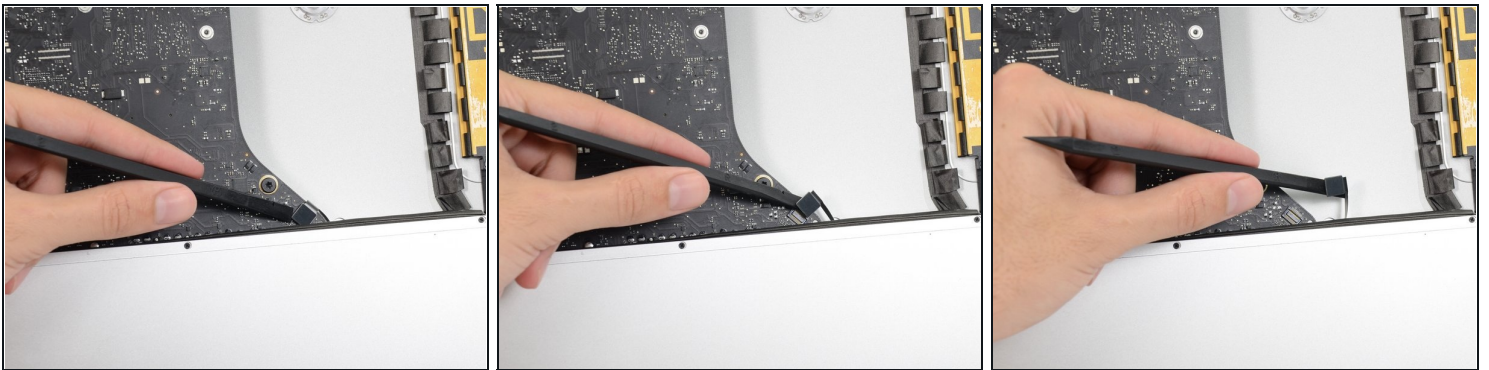


## Step 6



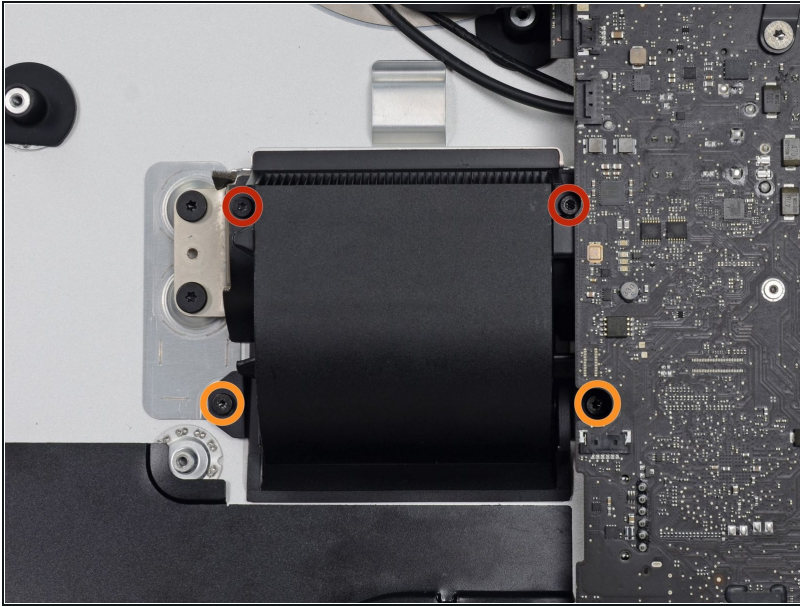
- If brackets secure the four antenna cables, remove the two T5 Torx screws from the brackets.

## Step 7



- Use the flat edge of a spudger to pry the headphone jack cable connector from its socket on the logic board.
- ① Push the cable slightly to the right.

## Step 8



- Remove the following screws securing the exhaust duct to the rear enclosure:
  - Two 6.3 mm T8 screws
  - Two 4.7 mm T8 screws

## Step 9



- Remove the four 7.2 mm T10 screws securing the logic board to the rear enclosure.
  - ⓘ Depending on the age and model of your iMac, a T9 driver may work best.

## Step 10



- Tilt the top of the logic board away from the rear enclosure.
- Lift the logic board straight up and out of the iMac.

**⚠ Be careful not to snag the board on any of the rear case's screw posts.**

- ① The I/O boards at the bottom of the logic board will be the greatest challenge. It is recommended to pull gently to avoid any damage.
- ★ During reassembly of the logic board, pay attention to the position of the I/O connectors. When the board is back in the case, insert a USB or Thunderbolt cable into one of the connectors to align it perfectly.

---

To reassemble your device, follow these instructions in reverse order.