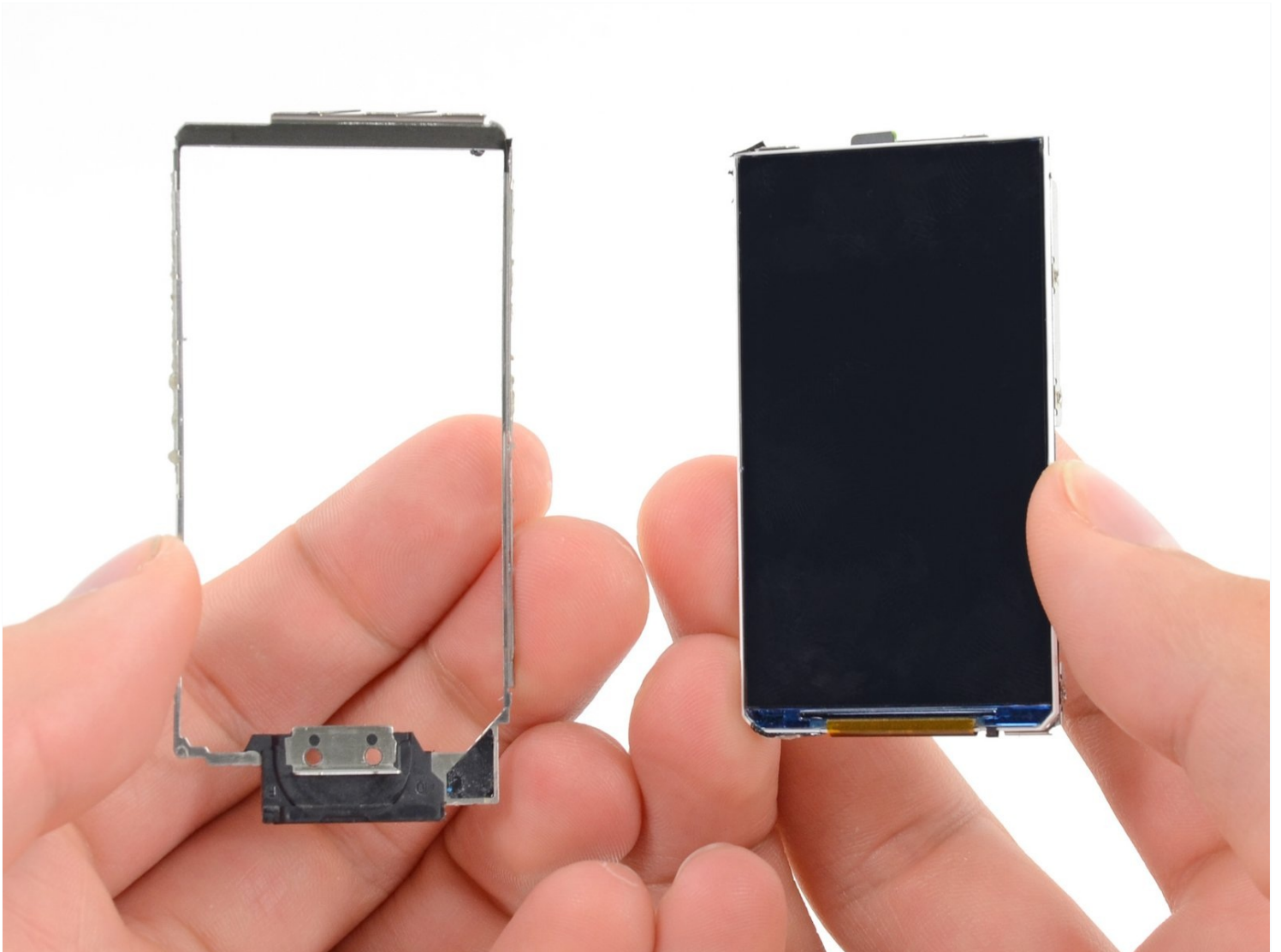




iPod Nano 7th Generation Display Replacement

Use this guide to replace a broken or faulty...

Written By: Sam Goldheart



INTRODUCTION



Use this guide to replace a broken or faulty LCD display in your 7th Generation iPod Nano.

TOOLS:

- iOpener (1)
- Phillips #000 Screwdriver (1)
- iFixit Opening Tool (1)
- Spudger (1)
- Metal Spudger (1)

Step 1 — iOpener Heating



-  We recommend that you clean your microwave before proceeding, as any nasty gunk on the bottom may end up stuck to the iOpener.
- Place the iOpener in the center of the microwave.
-  For carousel microwaves: Make sure the plate spins freely. If your iOpener gets stuck, it may overheat and burn.

Step 2



- Heat the iOpener for **thirty seconds**.
- Throughout the repair procedure, as the iOpener cools, reheat it in the microwave for an additional thirty seconds at a time.

⚠ Be careful not to overheat the iOpener during the repair. Overheating may cause the iOpener to burst. Do not attempt to heat over 100°C (212°F).

⚠ Never touch the iOpener if it appears swollen.

⚠ If the iOpener is still too hot in the middle to touch, continue using it while waiting for it to cool down some more before reheating. A properly heated iOpener should stay warm for up to 10 minutes.

Step 3



- Remove the iOpener from the microwave, holding it by one of the two flat ends to avoid the hot center.

⚠ The iOpener will be very hot, so be careful when handling it. Use an oven mitt if necessary.

Step 4 — Alternate iOpener heating method



i If you don't have a microwave, follow this step to heat your iOpener in boiling water.

- Fill a pot or pan with enough water to fully submerge an iOpener.
- Heat the water to a boil. **Turn off the heat.**
- Place an iOpener into the hot water for 2-3 minutes. Make sure the iOpener is fully submerged in the water.
- Use tongs to extract the heated iOpener from the hot water.
- Thoroughly dry the iOpener with a towel.
⚠ The iOpener will be very hot, so be careful to hold it only by the end tabs.
- Your iOpener is ready for use! If you need to reheat the iOpener, heat the water to a boil, turn off the heat, and place the iOpener in the water for 2-3 minutes.

Step 5 — Front Panel Assembly



- Lay the iOpener over the plastic tab to loosen the adhesive. Let the bag sit on the device for approximately 90 seconds before attempting to open the panel.

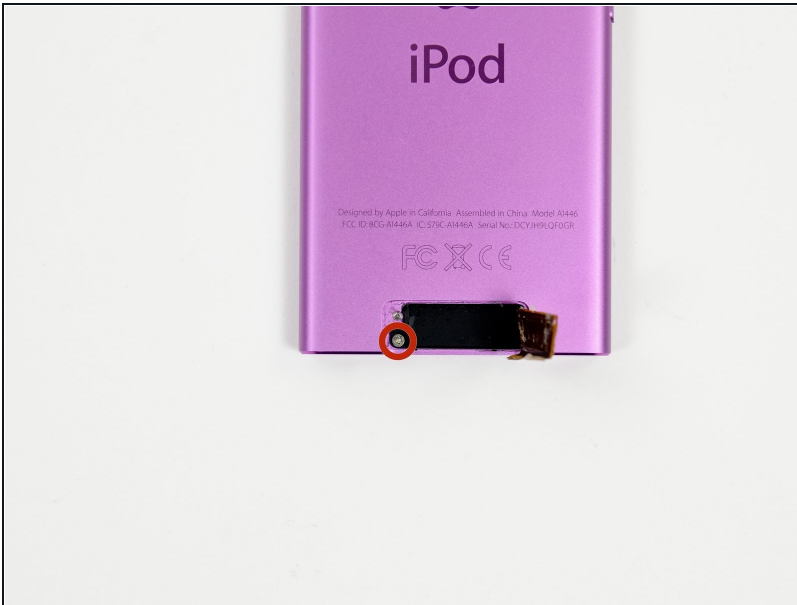
Step 6



- Use a plastic opening tool to pull the rear plastic cover away from the device until there is enough room to insert a spudger.
- Insert a spudger under the cover, then pry it up and away from the device.
- Remove the rear plastic cover from the iPod.

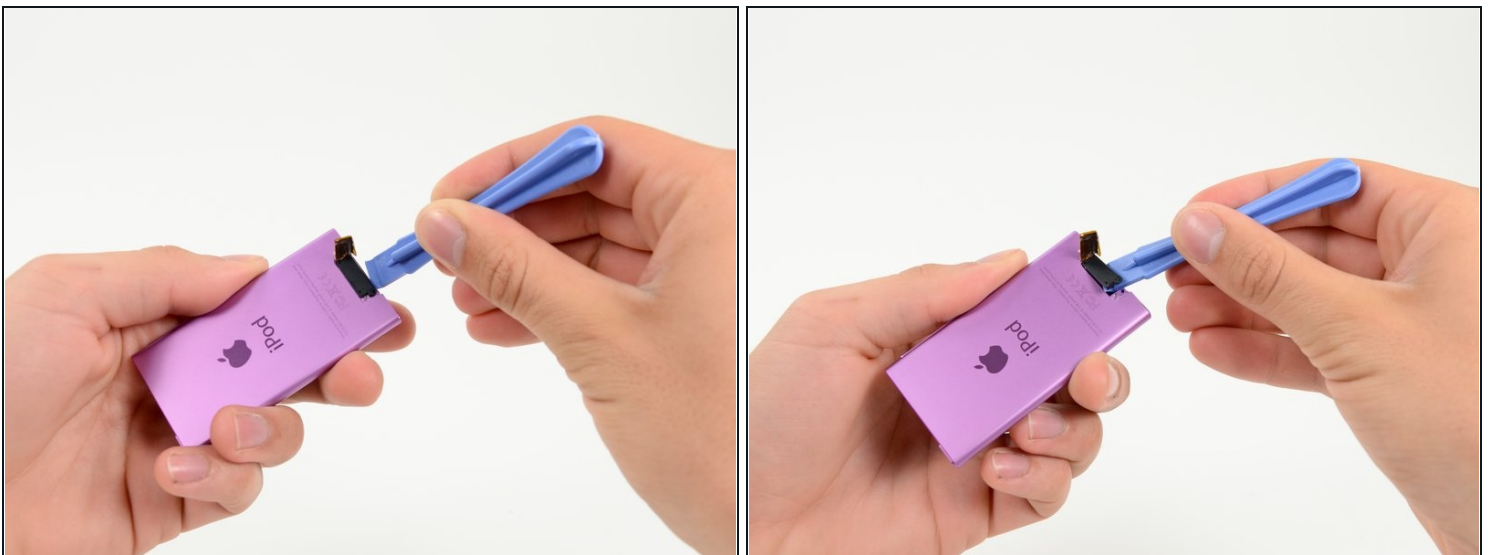
⚠ Be very careful in removing the plastic cover as the bluetooth antenna is adhered to it.

Step 7



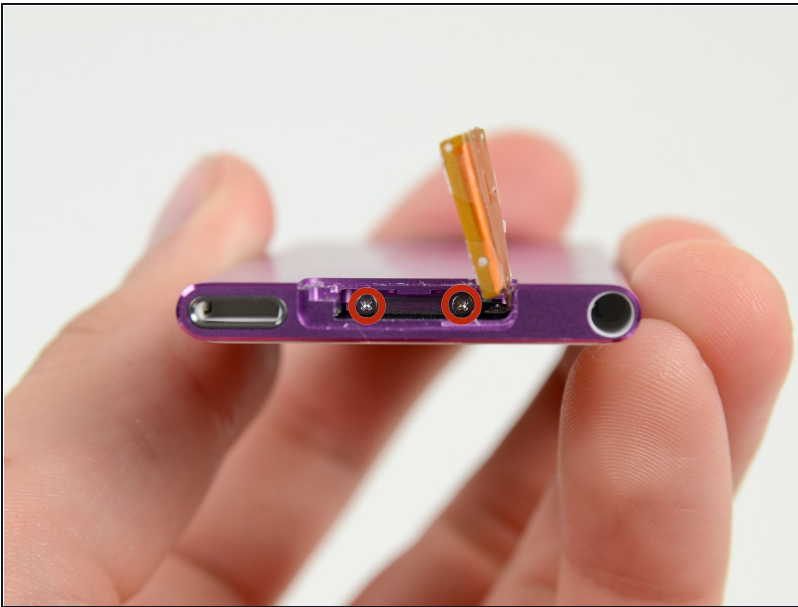
- ① Gently bend the Bluetooth antenna to the right, out of the way of the screws in the bottom of the device.
- Remove the single 1.4 mm Phillips #000 screw from the black plastic spacer.

Step 8



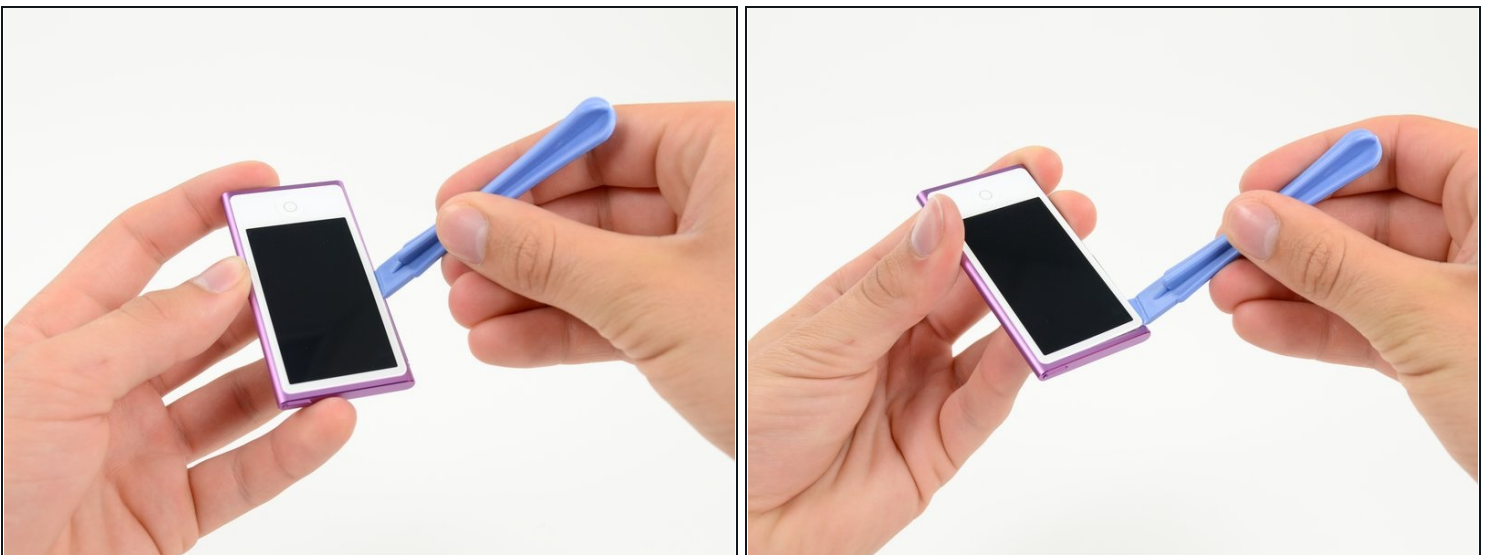
- Use a plastic opening tool to remove the black plastic spacer from the Nano.

Step 9



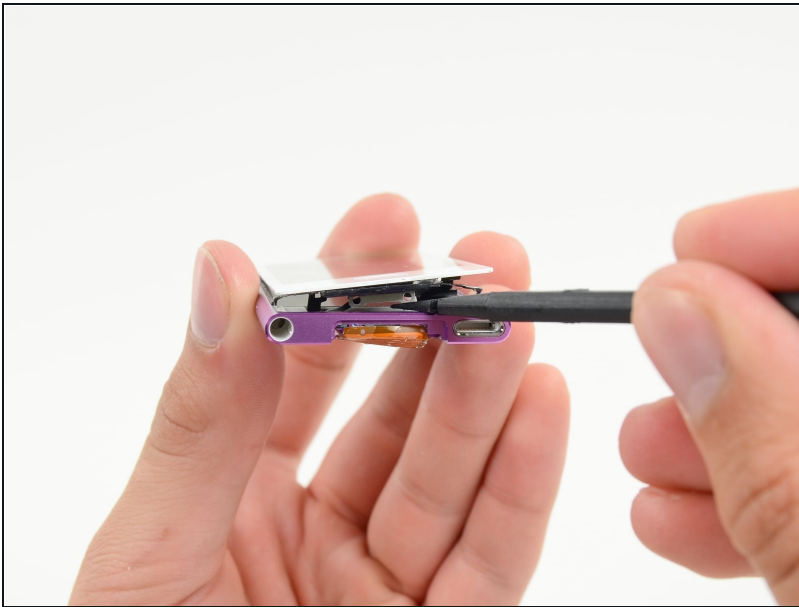
- Remove the two 2 mm Phillips #000 screws from the bottom of the case.

Step 10



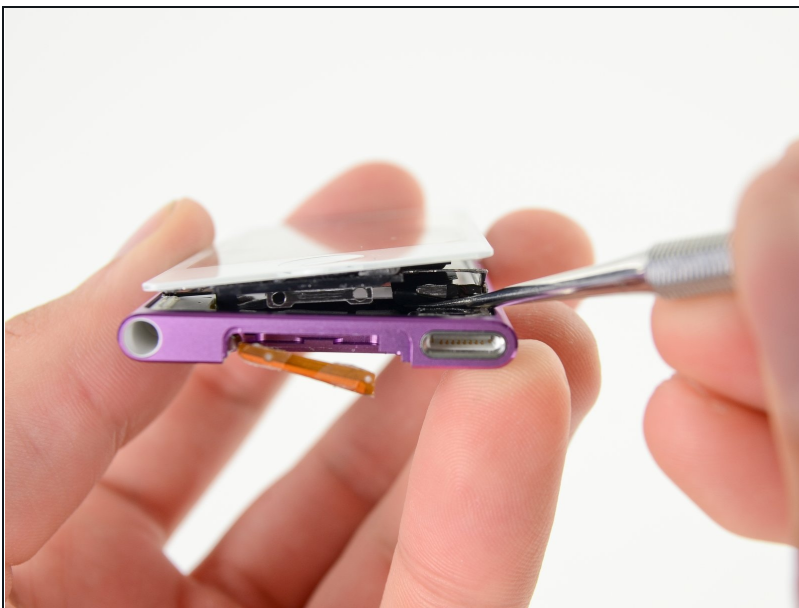
- Insert a plastic opening tool into the seam between the white plastic front panel and the rear case.
- Slide the opening tool along the edge of the front panel to free it from clips and adhesive.

Step 11



- Use a spudger to press the midframe screw tab up and out of the rear case.

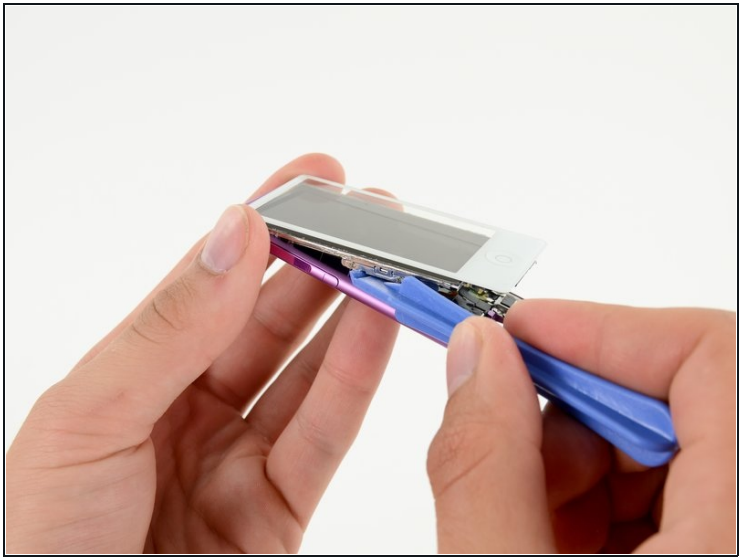
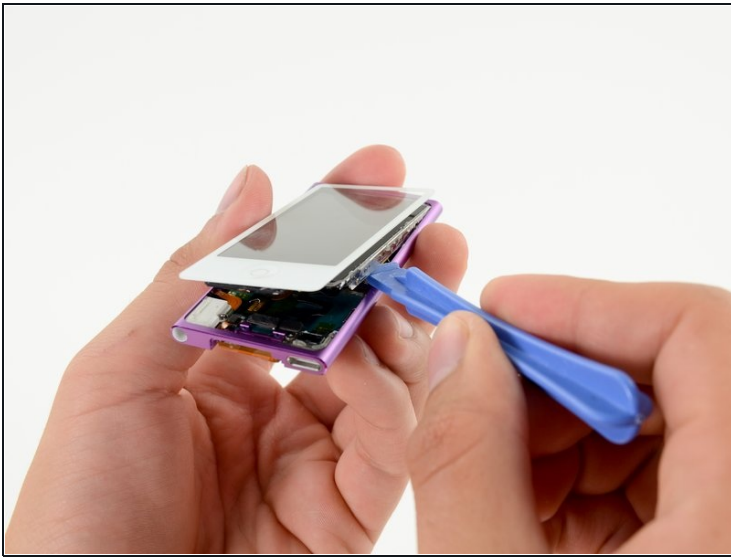
Step 12



- Use a metal spudger to carefully pry near the Lightning connector and under **all** parts of the front panel assembly: the front glass/digitizer, the LCD display and the metal midframe.

ⓘ The adhesive under the metal midframe/display assembly is quite strong and the components are fragile, so go slowly and gently. Make sure you do not bend the LCD screen.

Step 13



- Continue prying along the edges under the front panel assembly, releasing the clips and adhesive along the sides of the device.

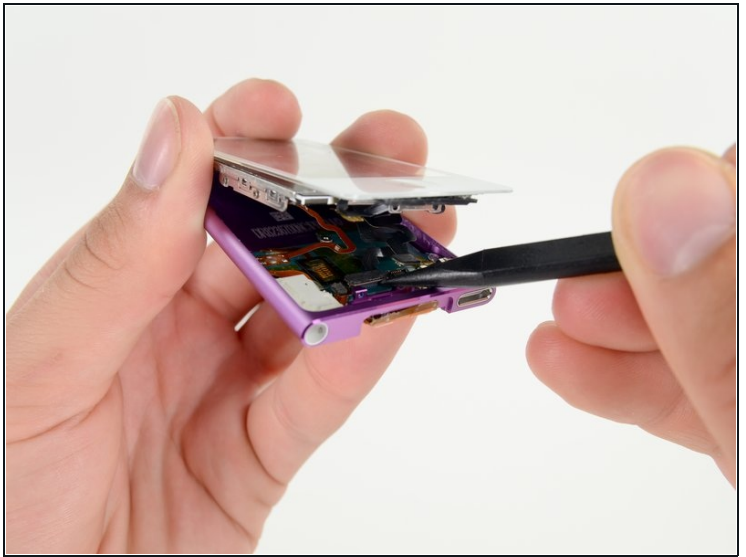
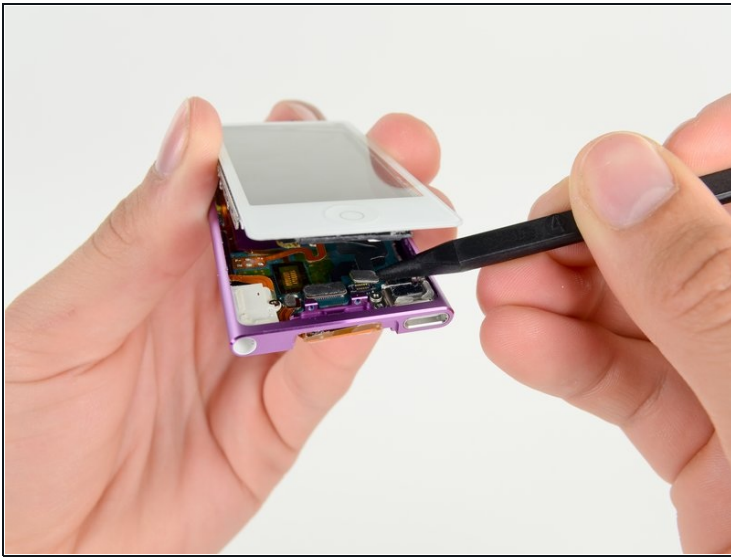
Step 14



- Pull the front panel assembly slightly down and partially out of the device.
- ⓘ You only need to open the device enough to gain access to the display cable connectors near the sleep/power button.

⚠ **Do not** separate the two halves entirely, they are still connected by several cables.

Step 15



- Use a spudger to release the digitizer cable and display data cable connectors.

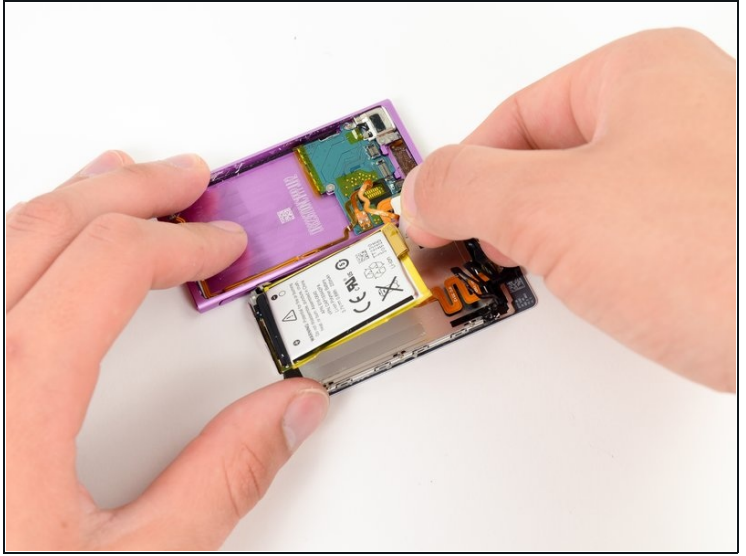
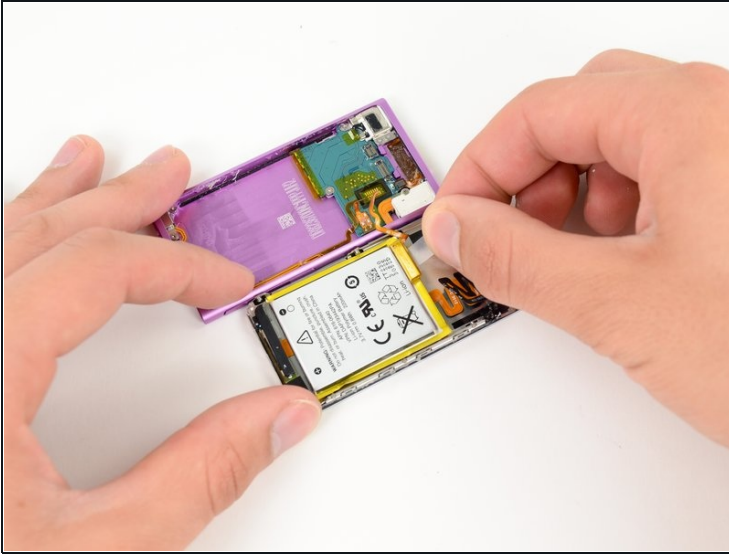
Step 16



- Gently unfold the two halves of the device to access the internal components.

⚠ Do not try to completely separate the two sections, yet, as they are still attached via a soldered cable.

Step 17



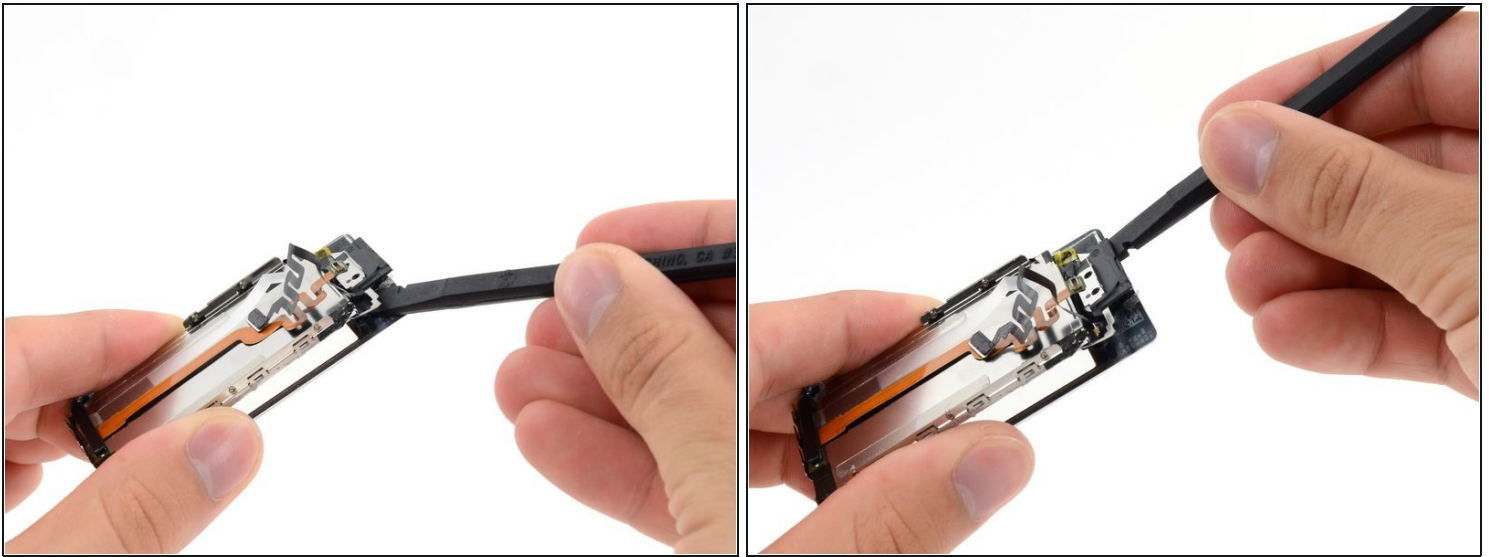
- Pull up on the battery pull tab to free the battery from its adhesive.
- ① Flip the battery over into the rear case for safekeeping.

Step 18



- Completely separate the front panel assembly from the rest of the device.

Step 19 — Display Assembly



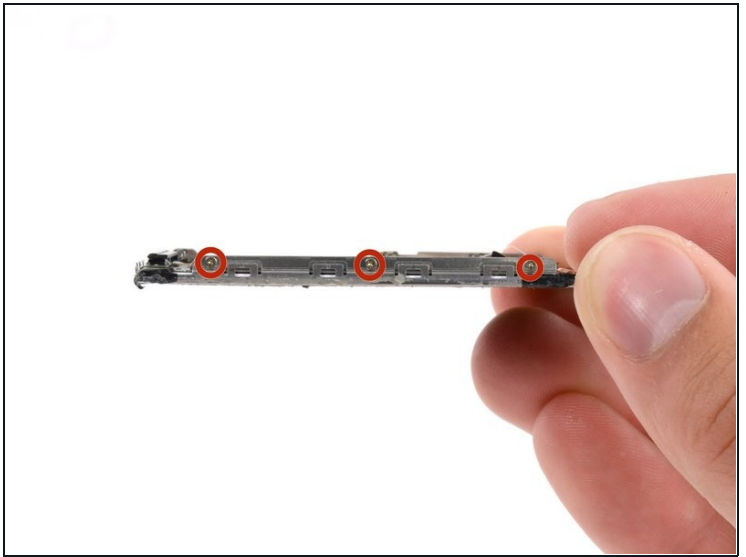
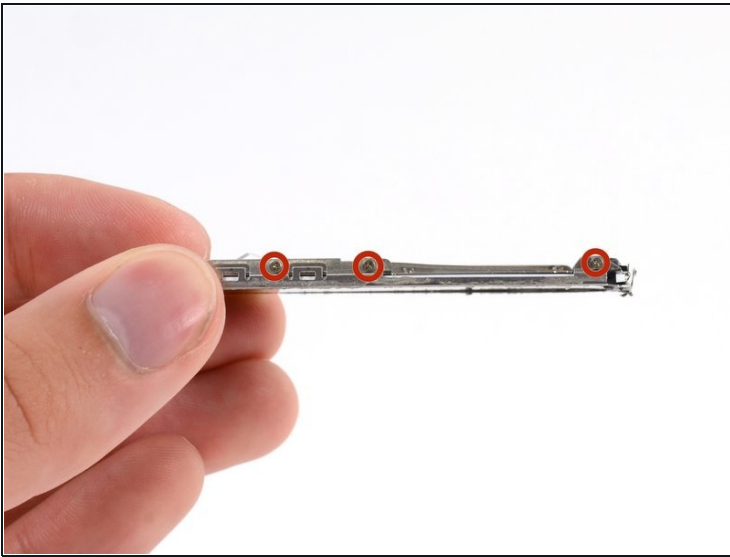
- Insert a spudger under the metal midframe and display on the left side of the home button.
- ① Make sure that the spudger is under the entire display assembly to prevent bending the metal midframe.
- Rotate the spudger around the home button and across the front panel, releasing the adhesive holding the display in place.

Step 20



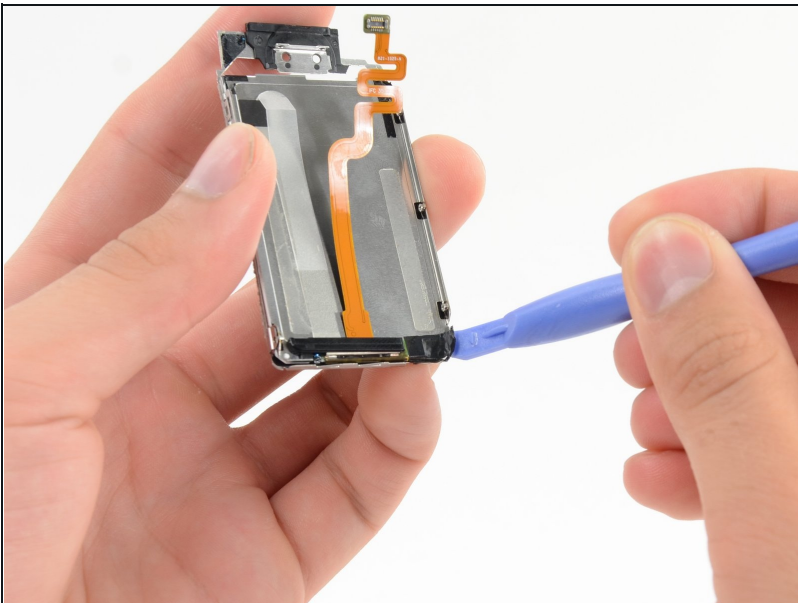
- Once all of the adhesive has been released, gently separate the display assembly from the front glass/digitizer.

Step 21 — Display



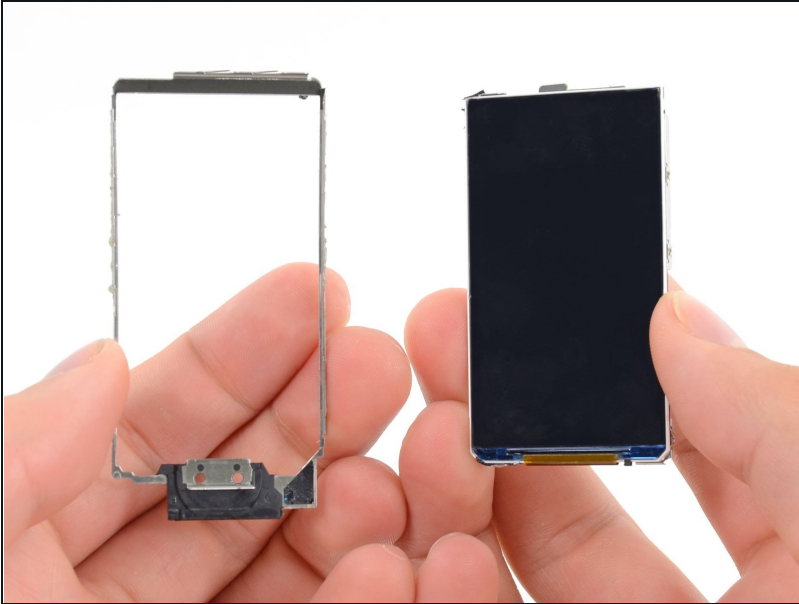
- Remove the six (three on each side) 1.5 mm Phillips #000 screws securing the metal midframe to the display.

Step 22



- If there is tape holding the midframe to the display, remove it with a plastic opening tool.

Step 23



- Remove the display from the midframe.

To reassemble your device, follow these instructions in reverse order.