



MacBook Air 11" Mid 2013 AirPort/Bluetooth Board Replacement

Replace the AirPort/Bluetooth card in your MacBook Air 11" Mid 2013.

Written By: Sam Goldheart



INTRODUCTION

Use this guide to replace the AirPort/Bluetooth board.



TOOLS:

- [P5 Pentalobe Screwdriver Retina MacBook Pro and Air](#) (1)
- [Spudger](#) (1)
- [T5 Torx Screwdriver](#) (1)



PARTS:

- [MacBook Air \(Mid 2013-2017\) AirPort/Bluetooth Board](#) (1)

Step 1 — Lower Case



- i Shut down and close your computer. Lay it on a soft surface top-side down.
- Remove the following ten screws:
 - Two 8 mm 5-point Pentalobe screws
 - Eight 2.5 mm 5-point Pentalobe screws
- i The special screwdriver needed to remove the 5-point Pentalobe screws can be found [here](#).


Step 2



- Wedge your fingers between the display and the lower case and pull upward to pop the lower case off the Air.

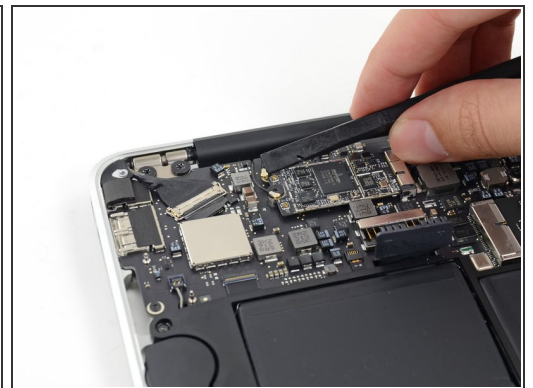
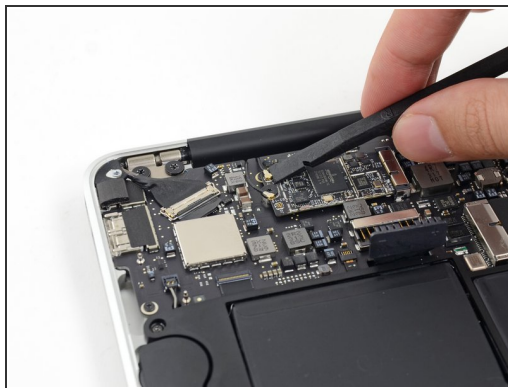
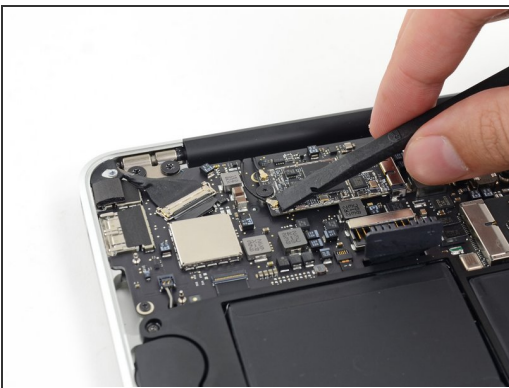
Step 3 — Battery Connector



 In this step you will disconnect the battery to help avoid shorting out any components during service.

- Use the flat end of a spudger to pry both short sides of the battery connector upward to disconnect it from its socket on the logic board.
- Bend the battery cable slightly away from the logic board so the connector will not accidentally bend back and make contact with its socket.

Step 4 — AirPort/Bluetooth Board



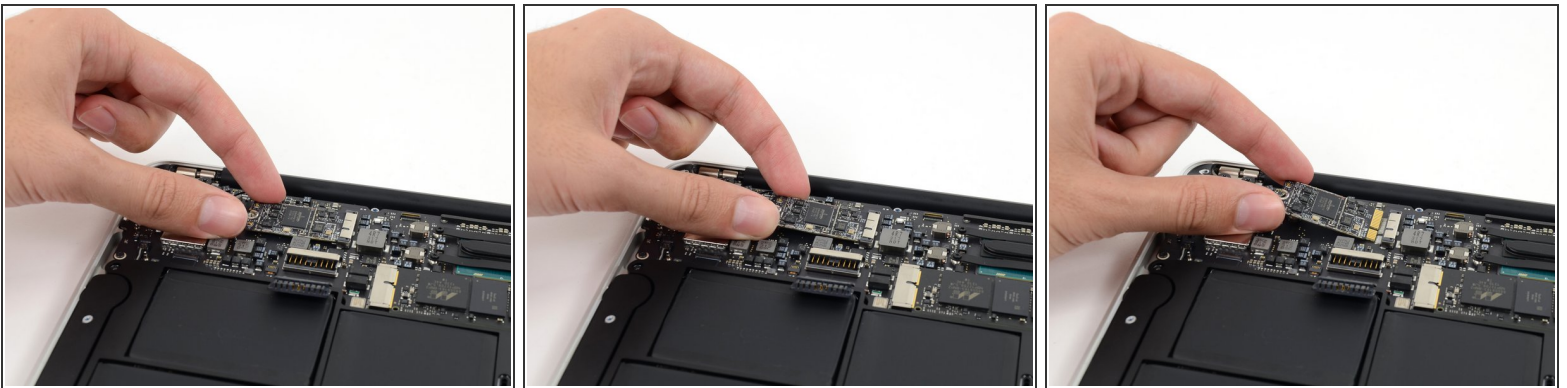
- Use the flat end of a spudger to pry both antenna connectors up from their sockets on the AirPort/Bluetooth card, and move them out of the way of the card.

Step 5



- Remove the single 2.9 mm T5 Torx screw securing the AirPort/Bluetooth card to the logic board.

Step 6



- Slightly lift the free end of the AirPort/Bluetooth board and pull it straight out of its socket on the logic board.

⚠ To avoid damaging the socket on the logic board, do not excessively lift the free end of the AirPort/Bluetooth card.

To reassemble your device, follow these instructions in reverse order.