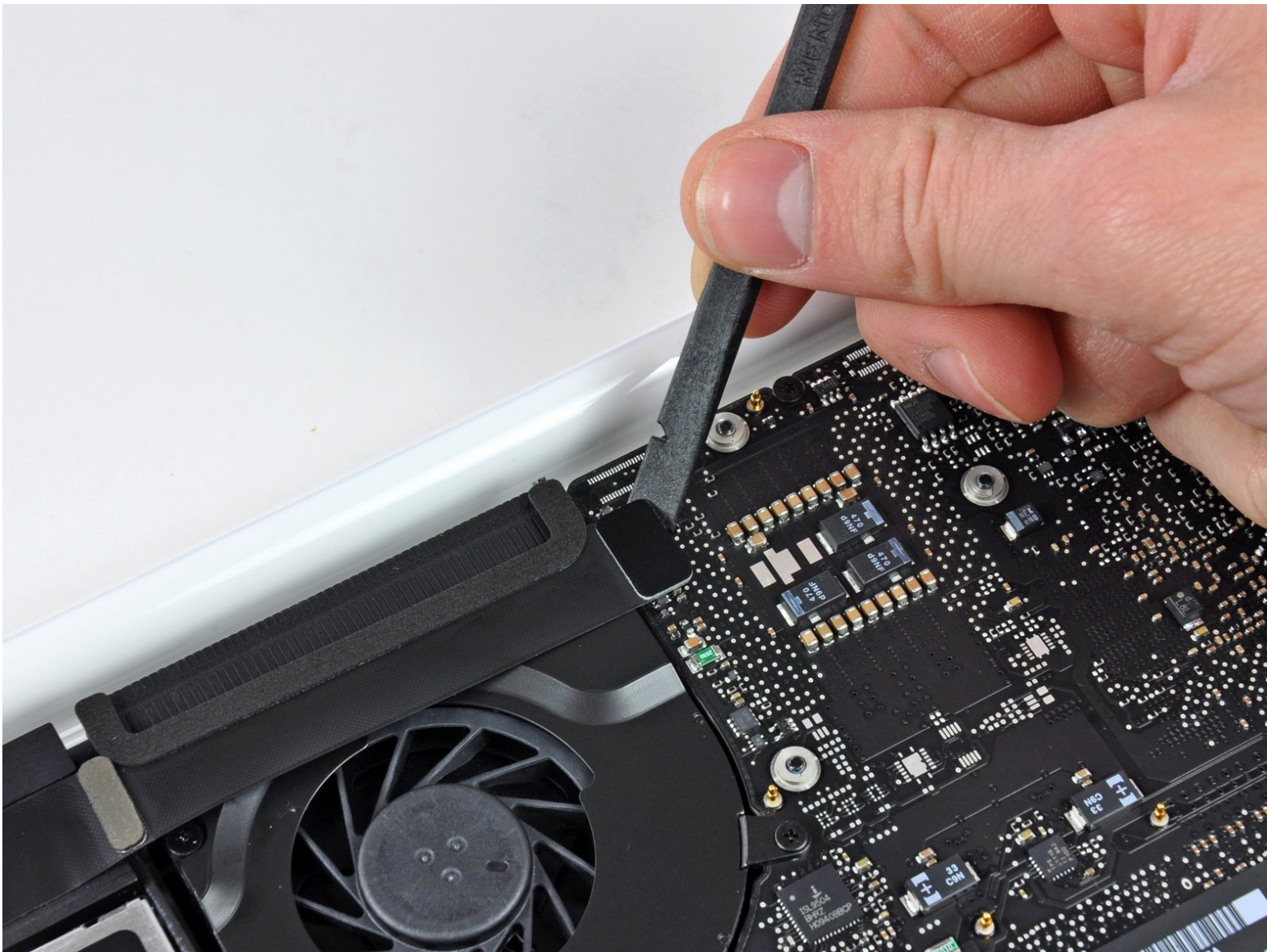




MacBook Unibody Model A1342 Rear Speaker Assembly Replacement

Written By: Walter Galan



INTRODUCTION

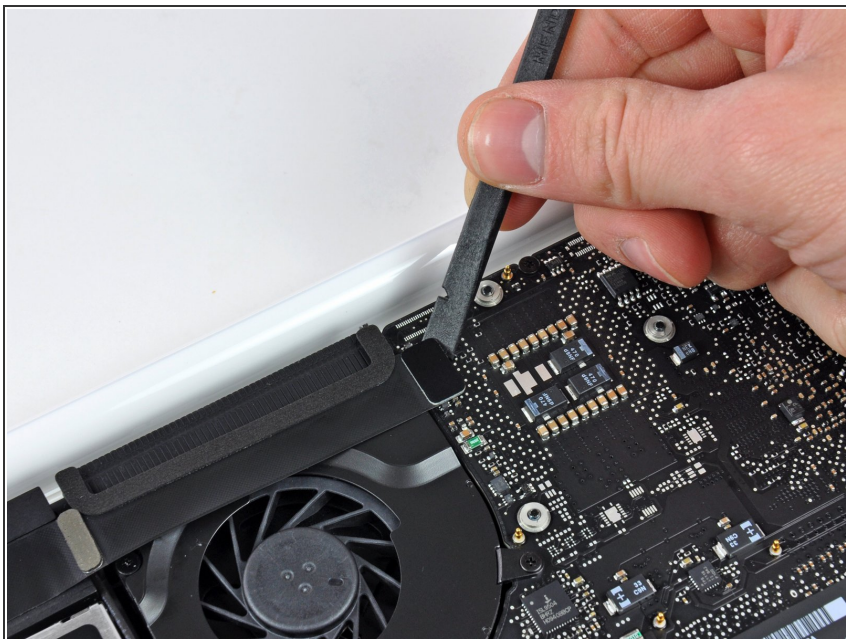
This guide is an internal private guide used as a prereq.



TOOLS:

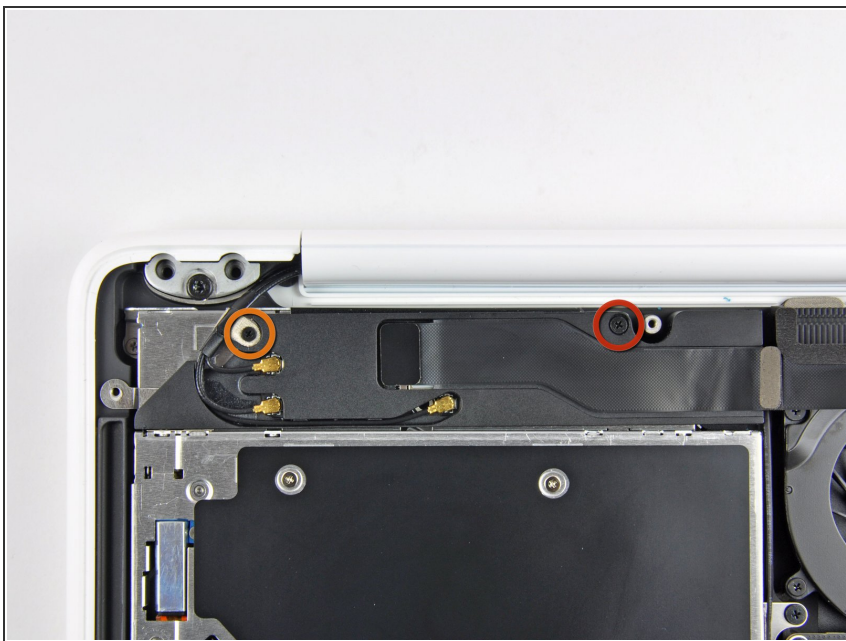
- [Spudger](#) (1)
 - [Phillips #00 Screwdriver](#) (1)
-

Step 1 — Rear Speaker Assembly



- Use the flat end of a spudger to pry the AirPort/Bluetooth cable connector up off the logic board.

Step 2



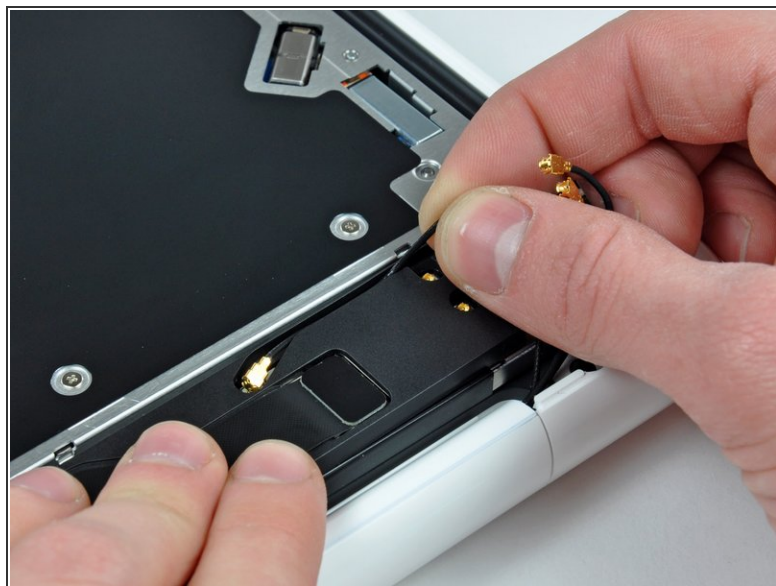
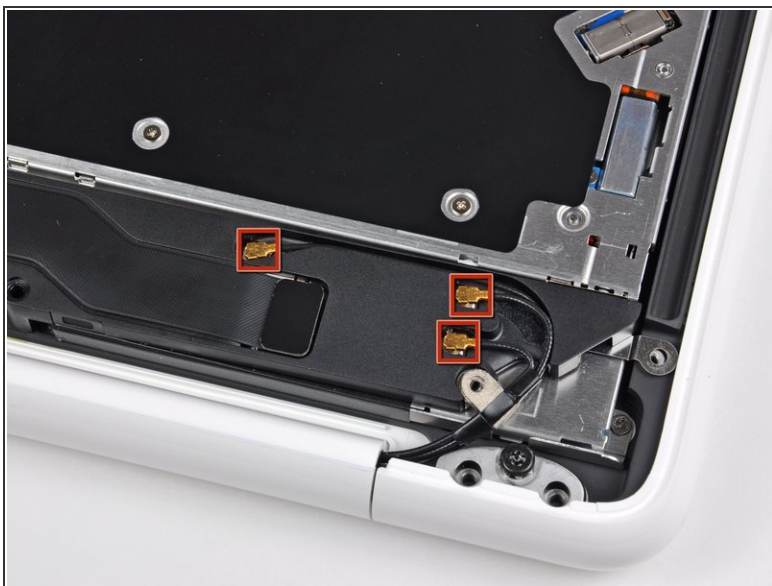
- Remove the following screws securing the right speaker assembly to the upper case:
 - One 12 mm Phillips screw.
 - One 3 mm Phillips screw.

Step 3



- Remove the single 2.2 mm Phillips screw inserted horizontally into the side of the optical drive.

Step 4



- Pry the AirPort and Bluetooth antenna connectors (3 total) up off the AirPort/Bluetooth card.
- De-route the long antenna from its channel in the rear speaker housing.

Step 5



- Use the flat end of a spudger to pry the rear speaker cable connector up off the logic board.

Step 6



- Remove the rear speaker assembly from the upper case.

Step 7



- Carefully peel the AirPort/Bluetooth cable from its channel within the rear speaker assembly.
- Use the flat end of a spudger to pry the AirPort/Bluetooth cable up off the rear speaker.

Step 8



- Remove three 3 mm Phillips screws securing the AirPort/Bluetooth board to the rear speaker assembly.

Step 9



- Lift the AirPort/Bluetooth board up off the rear speaker assembly.

To reassemble your device, follow these instructions in reverse order.