



BlackBerry 8703e Case Replacement

Written By: Johnathon Gorski



INTRODUCTION

This repair guide shows how to disassemble the case on the BlackBerry 8703e to access the keyboard, logic board, and screen.

TOOLS:

- [Spudger](#) (1)
 - [T6 Torx Screwdriver](#) (1)
 - [iFixit Opening Tool](#) (1)
-

Step 1 — Battery



- Position your phone like the first image so that the highlighted button is on your left.
- Slide the battery cover to the left while pressing the button with one hand and applying pressure on the center of the phone with your other hand.
- Remove the cover completely and set it aside.

Step 2



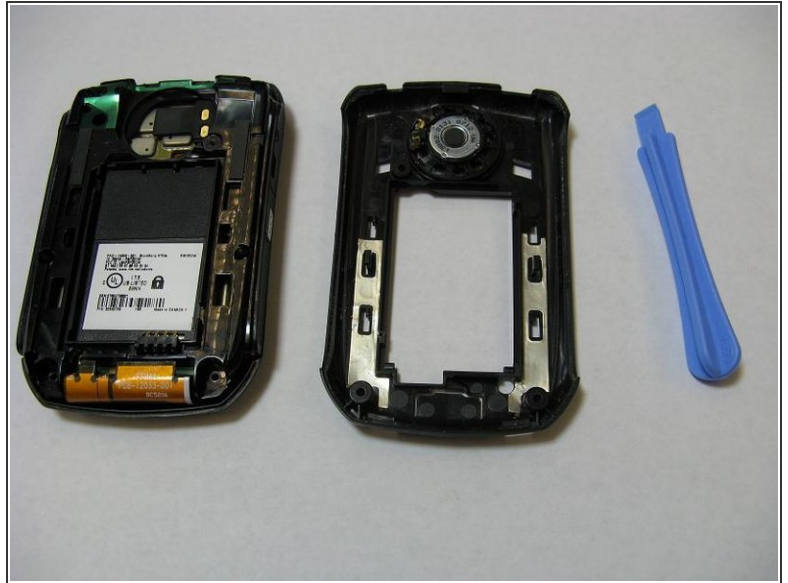
- Position your phone like the image to the left, then locate the rectangular battery in the middle of the phone.
- Locate the notch on the top right of the battery compartment.
- Slide your fingernail or the flat end of a Spudger in the notch, then lift upwards on the top of the battery to remove it from the phone.
- Set the battery aside and out of the way.

Step 3 — Case



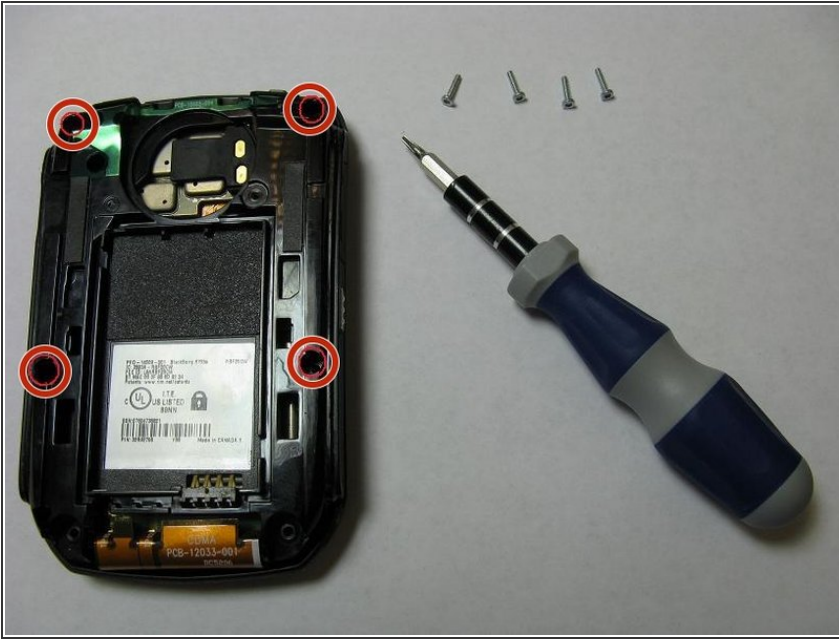
- Make sure the back of the phone is facing upwards like the image on the left.
- Remove all three screws highlighted in the image by turning them counter-clockwise using the T6 Torx Screwdriver.

Step 4



- Locate the notch in the back of the phone.
 - Use your thumb to push up on the notch, separating the back half of the phone from the keyboard and screen in the front.
 - Slide the opening tool in between the two halves of the phone.
 - Continually apply upward pressure with the opening tool to pop the back casing off of the main body.
 - Set the back casing aside and out of the way.
- i** You should now have five parts: The battery cover, the battery, the screws, the back casing, and the main body of the phone.

Step 5



⚠ Do not separate the front casing from the rest of the phone during this step. Keep the phone face-down on a flat surface.

- Remove these four screws by turning them counter-clockwise with the T6 Torx Screwdriver.

Step 6



- Hold the phone so the screen faces downward like in the first image, and remove the front casing.
- Remove the two keyboard components from the front casing, then set them aside.
- i** If the components or a black port protector fell out while removing the front case, then still set them aside. Take note that the two keyboard components may remain stuck together.

To reassemble your device, follow these instructions in reverse order.