



LG EnV Touch VX11000 Motherboard Replacement

This guide demonstrates how to replace the motherboard in an LG EnV Touch.

Written By: Rachel Smith



INTRODUCTION

If your LG EnV Touch VX11000 shuts down unexpectedly or the screen is broken or malfunctioning, you may need to replace the motherboard. This guide will show you how to replace the motherboard in an LG EnV Touch VX11000.



TOOLS:

- [1.5 mm Flathead Screwdriver](#) (1)
 - [Phillips #000 Screwdriver](#) (1)
-

Step 1 — Battery



- Turn the phone off.
- Flip it over so the front screen is facing down.

Step 2



- Slide the release latch down and toward you while lifting up on the left side of the battery cover.

Step 3



- Lift the edge of the battery to remove it.

Step 4 — Volume and Camera Buttons



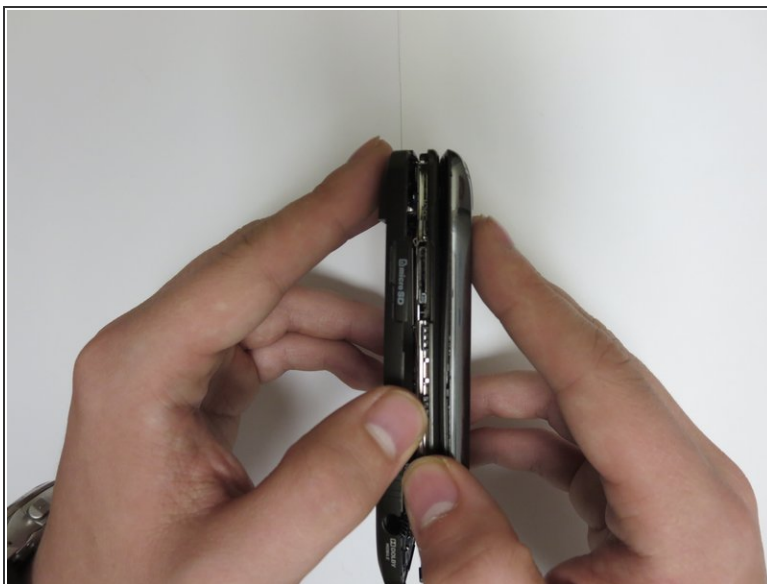
- Locate the three screw covers on the back of the phone. Using your fingernail (or a spudger, pry off screw covers.
- Using a Phillips #000 Screwdriver, remove the 1.5mm #000 Phillips screws that were under the screw covers.

Step 5



- Locate the two inner 1.5mm #000 Phillips screws and remove them using a Phillips #000 screwdriver.

Step 6



- Use a plastic opening tool or your fingernail to pry off the back case.

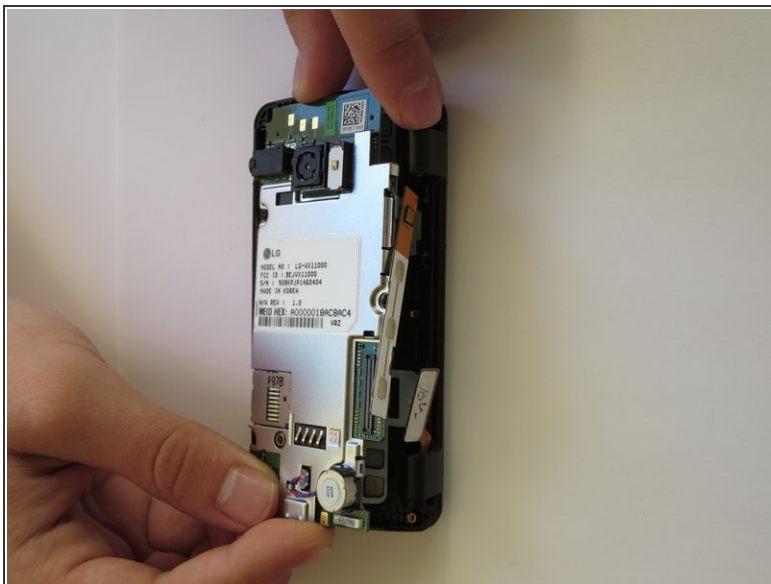
 The camera and volume keys will fall off.

Step 7 — Motherboard



- Use your fingers to pull up on the tab in order to unplug it.

Step 8



- Using both of your hands, gently pry out the motherboard by pulling up on both ends.

To reassemble your device, follow these instructions in reverse order.