



Sharp PC-MM20 Keyboard Replacement

This is a guide on how to replace the keyboard of your Sharp PC-MM20 laptop.

Written By: Logan Lindsey



INTRODUCTION

You'll be replacing the keyboard component of the Sharp PC - MM20!



TOOLS:

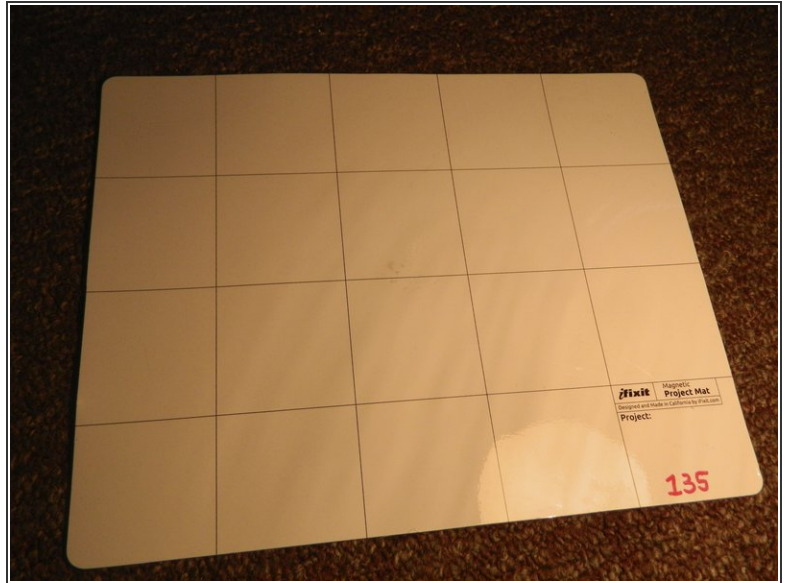
- [Tweezers](#) (1)
 - [Phillips #0 Screwdriver](#) (1)
-

Step 1 — Keyboard



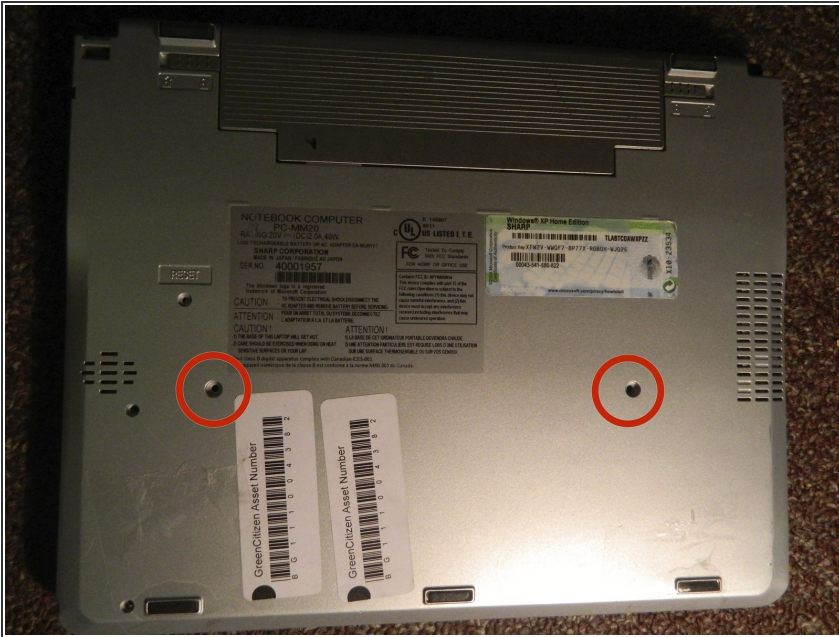
- First, remove the battery from your laptop and make sure it is powered down.

Step 2



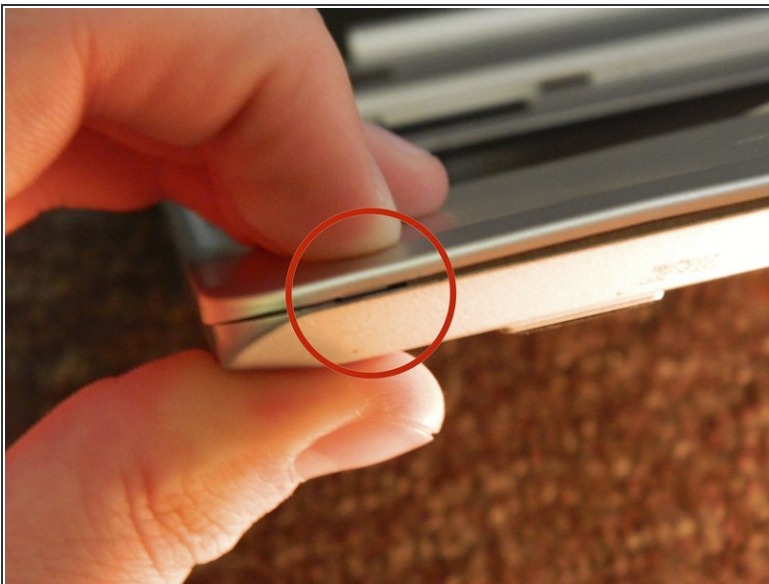
- Close your laptop
- Turn your laptop so that the back of it is facing you.
- You should notice three screw. Remove those screws using the proper screw driver.
- Be sure to put them somewhere safe, like a magnetic pad for instance.

Step 3



- Now, we're going to flip the laptop so it is upside down.
- Remove the screws shown in the picture as well.

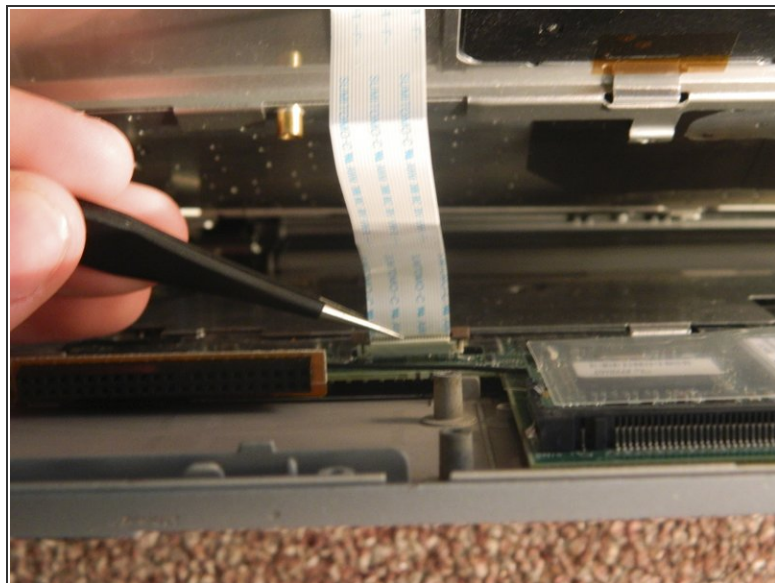
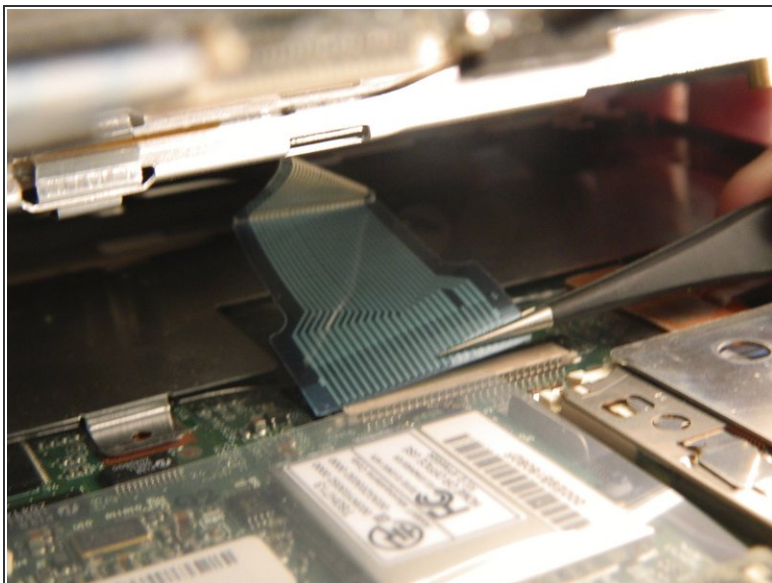
Step 4



- Next, open the laptop and focus on the front of the base of the laptop.
- Notice that there are small notches in between the two plates of the laptop
- Take a flat edge and wedge it into the slot, and pop it open. There should be several of these slots on the front side of the laptop.

This document was generated on 2020-11-28 03:03:31 AM (MST).

Step 5



- Once the cover is loose, you should be able to wiggle it somewhat freely. However, there are a few connections holding it together.
- Next, we're going to use tweezers to delicately remove the flat cable connecting the key board to the laptop.
- Also, remove the flat cable from the track pad to the laptop.

Step 6



- Now that all connections are undone, you should be able to easily remove the top of the base from the rest of the computer.

Step 7



- Next, you can take the key board out of its housing, and replace it with your new key board!

To reassemble your device, follow these instructions in reverse order.