



# Game Boy Advance Teardown

Written By: Adam



---

# INTRODUCTION

Use this guide to disassemble all or any of the parts of the Game Boy Advance.

---



## TOOLS:

- [Phillips #00 Screwdriver](#) (1)
  - [Tri-point Y0 Screwdriver](#) (1)
-

## Step 1 — Game Boy Advance Teardown



- Remove the back battery cover by pinching down on the tab and pulling outward.

## Step 2



- Remove the six back panel screws using a Y1 screw driver.

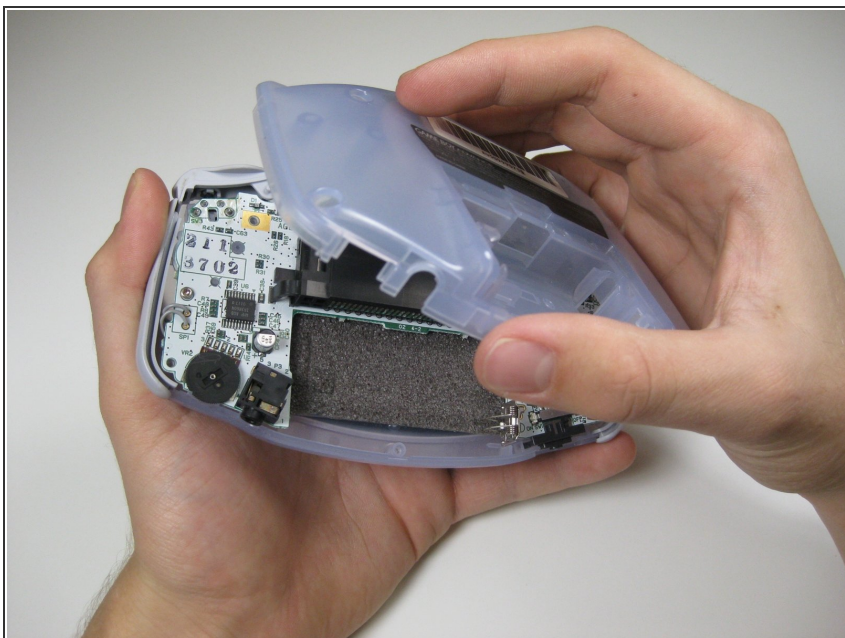


### Step 3



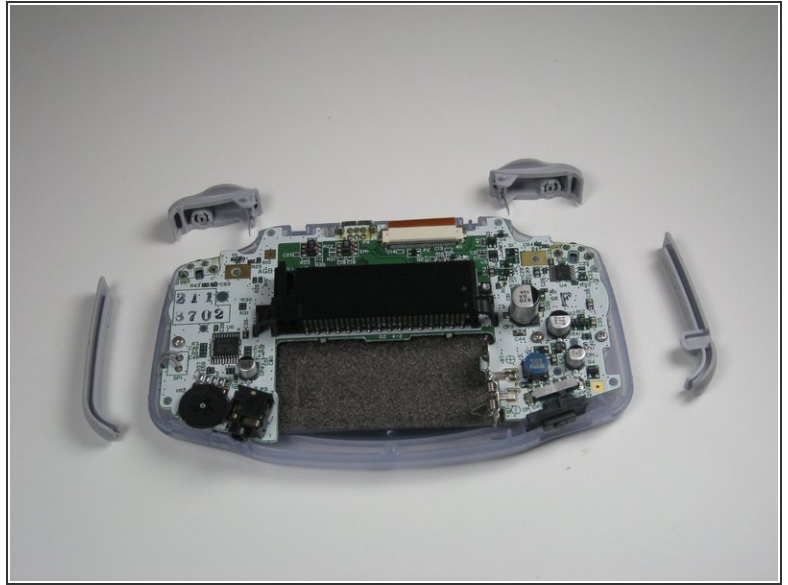
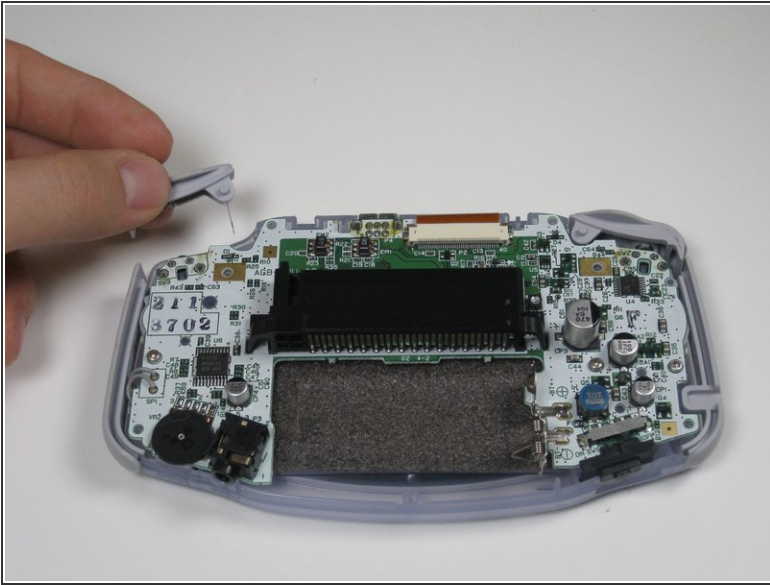
- Remove bottom back panel screw with a Phillips #1 screw driver.

### Step 4



- Remove the back panel by pulling away with one hand and the front secured in the other hand.
- ⚠ Beware of right and left triggers, the right and left panels, and the power switch falling off as the back panel is removed.

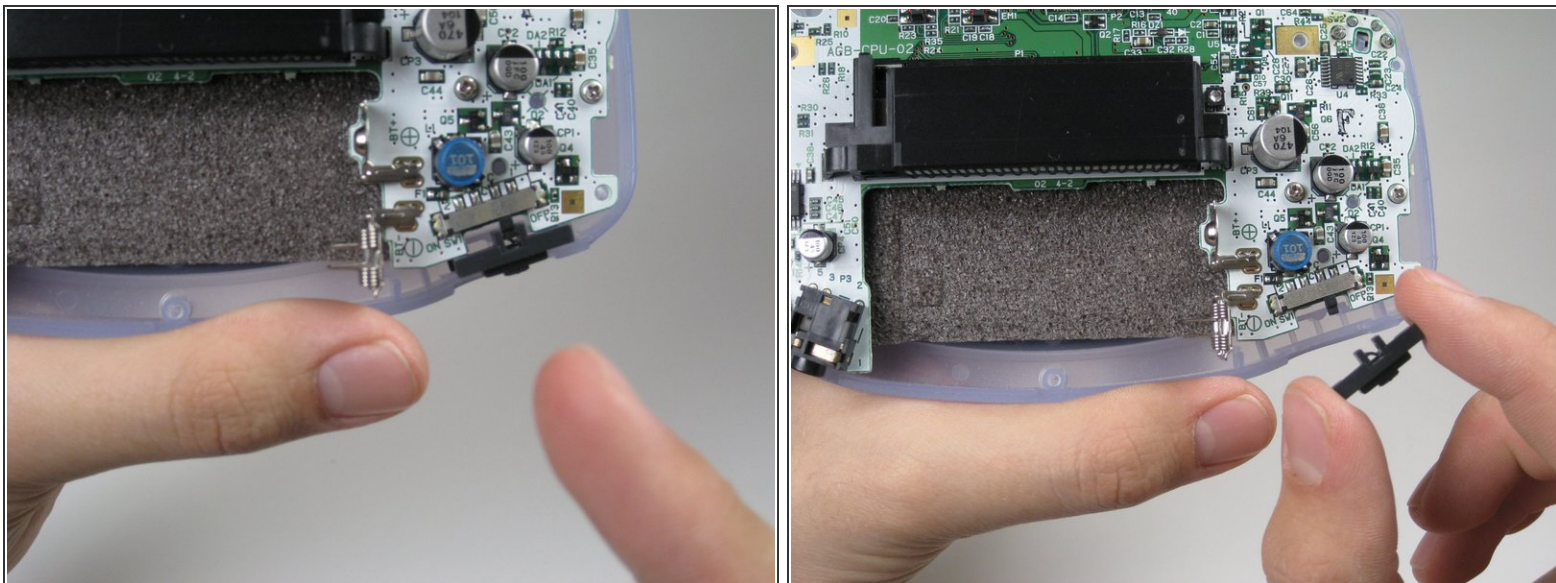
## Step 5



- Remove left and right triggers by lifting and pulling them away from the system.
- Do the same for side panels.
- ⓘ For finicky or jammed triggers only. Adjust and correct triggers and reassemble. Most jammed triggers are caused by buttons misplaced or jammed in its enclosure.

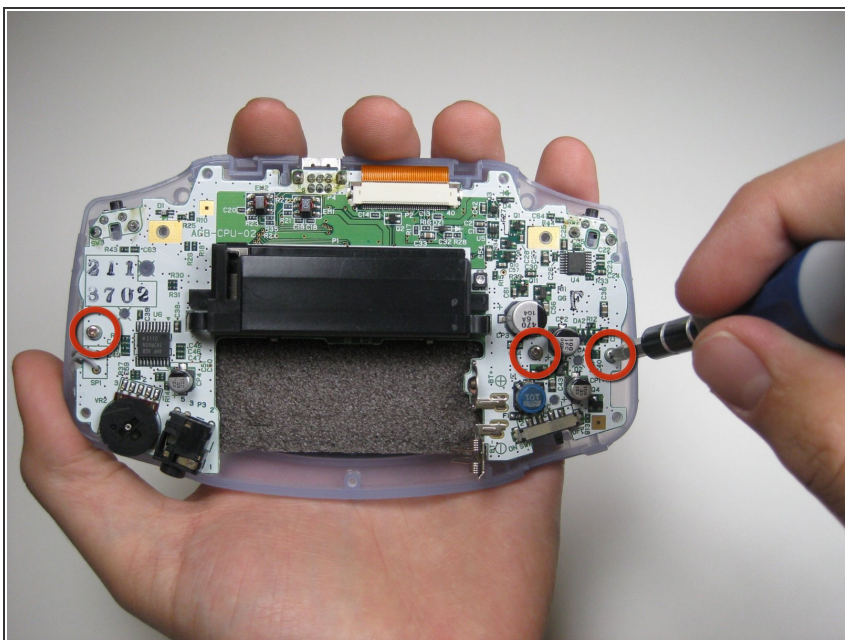


## Step 6



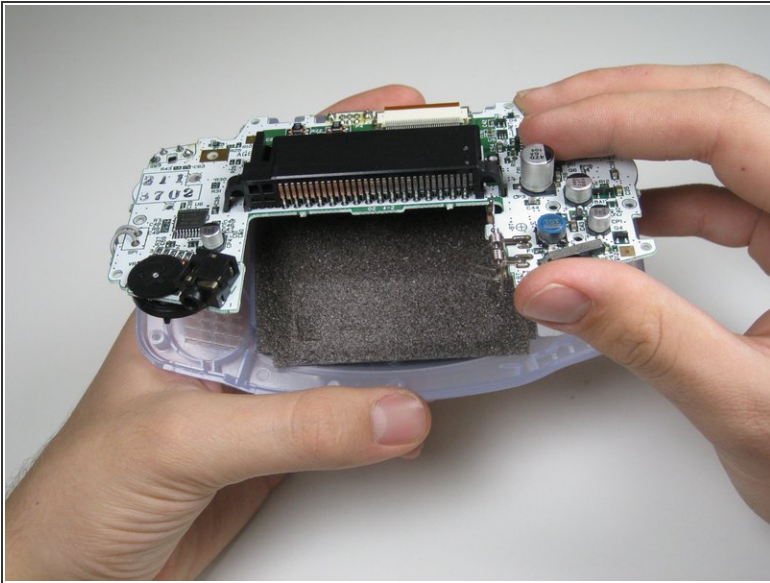
- Remove the gray On/Off Switch by pulling up and away from the unit. Replace with another switch if necessary.

## Step 7



- Remove the three screws on the circuit board with a Phillips #1 screw driver.
- ⓘ The last screw on the right is not included on some Game Boy Advance systems.

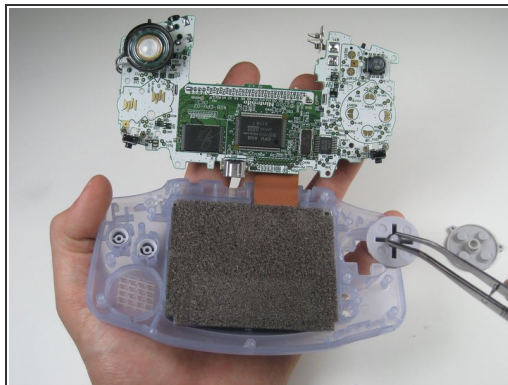
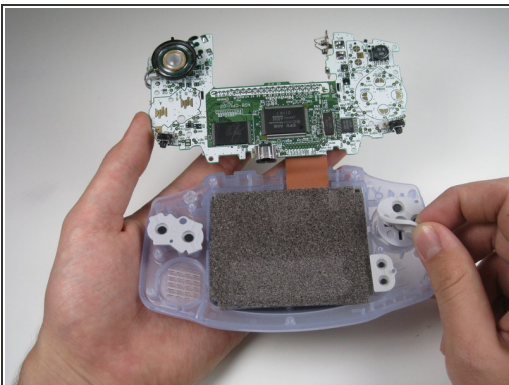
## Step 8



- Pull circuit board away from the front panel by pulling up at the bottom of the circuit board, keeping the top ribbon still connected.

⚠ Beware not to damage the top ribbon by pulling up gently.

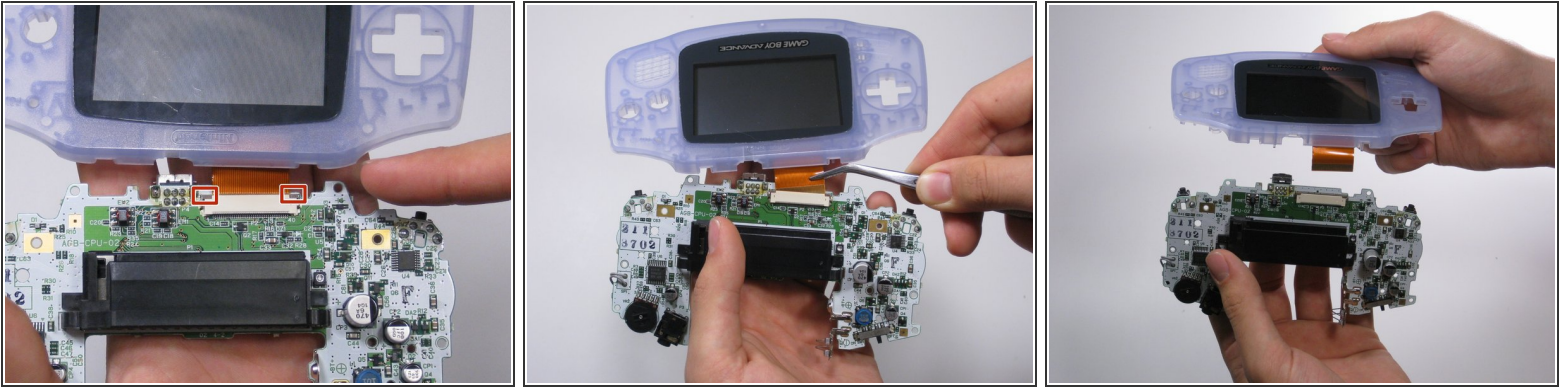
## Step 9



- Remove the rubber button pads from their pockets.
- Remove the plastic buttons and the D-pad from beneath the rubber pads with tweezers or by hand.

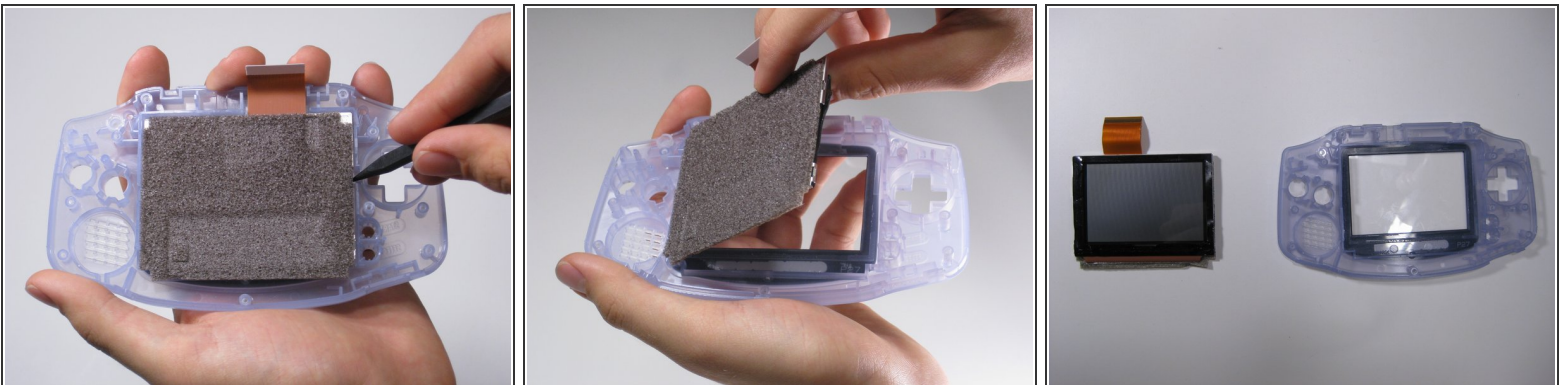


## Step 10



- Use a spudger/tweezers/fingernail to unlatch the LCD ribbon port by pulling the grey tabs on the sides upwards (towards the top edge of the PCB).
- Once the LCD ribbon port has been unlatched, the LCD ribbon should very easily slide out and can be removed with zero force using fingers or tweezers.

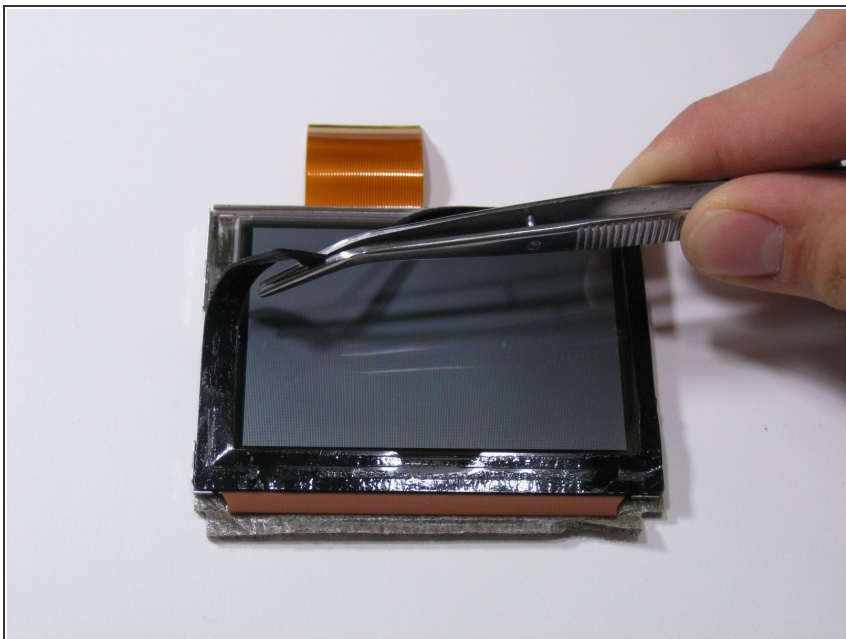
## Step 11



- Use the spudger to lift the screen from the front panel. Place the spudger in the space directly left of the D-pad.
- ⚠ The screen and the front panel is connected by a black tape that could rip if not removed carefully.
- ⓘ You can use an iOpener or a hair dryer on the other side of the front panel in order to soften the black tape.



## Step 12



- Use the tweezers to remove the black tape if needed.