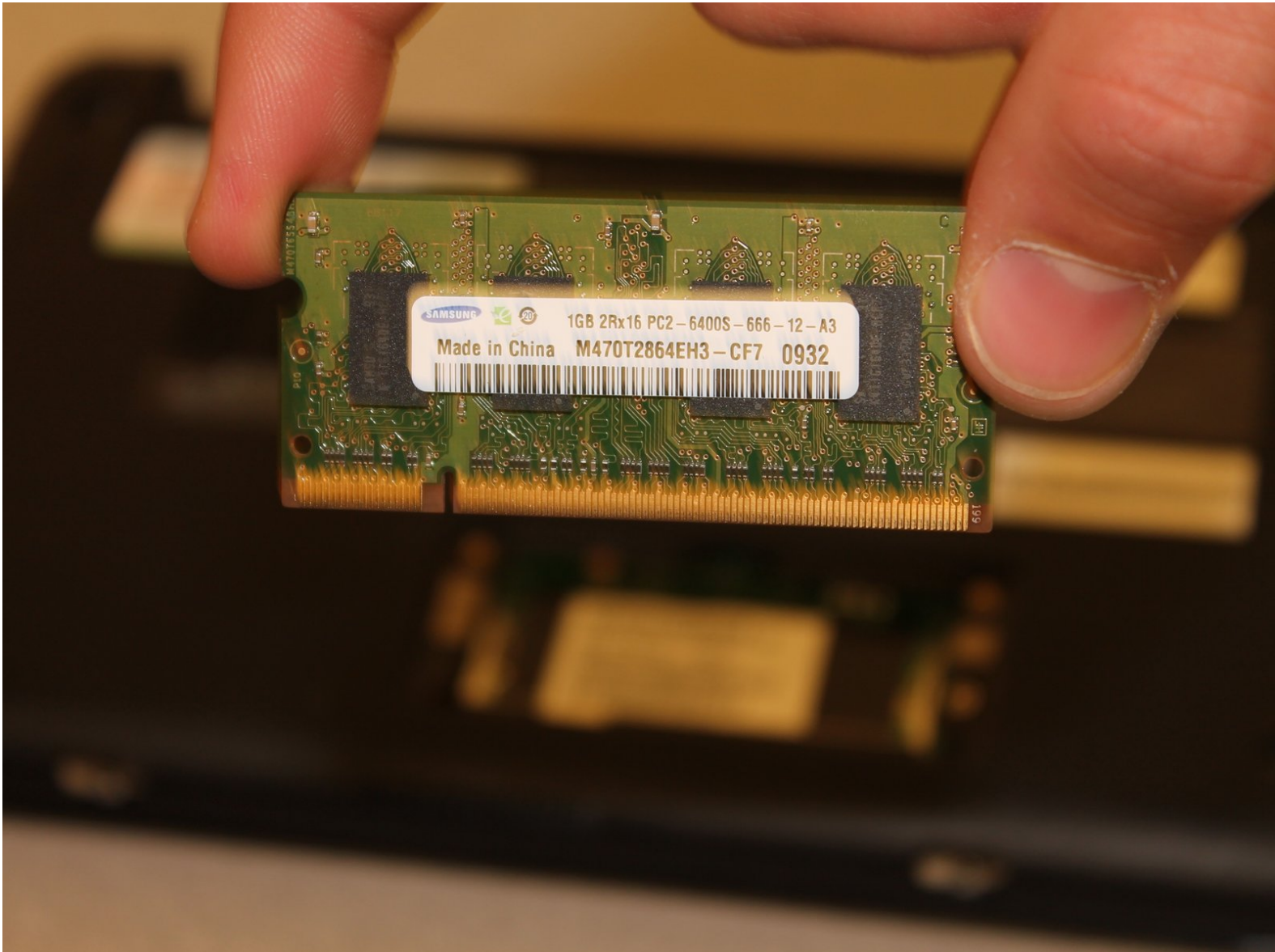




# HP Mini 110-1046NR Memory Card Replacement

HP Mini 110 memory card replacement guide

Written By: Jared Cooper



---

## INTRODUCTION

Replacing memory can greatly increase the operating speed of your HP mini.



### TOOLS:

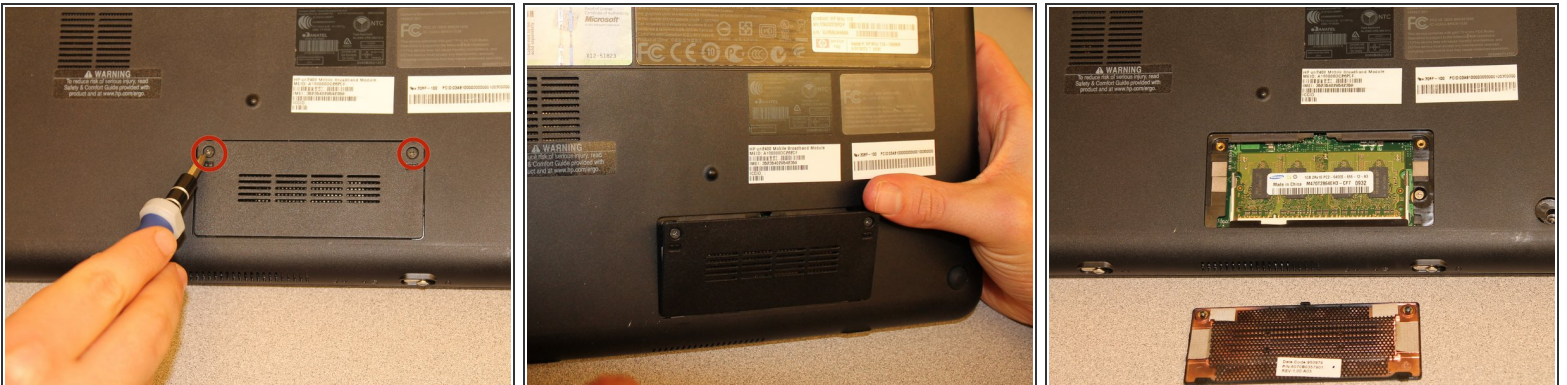
- [Phillips #1 Screwdriver](#) (1)
  - [Spudger](#) (1)
-

## Step 1 — Battery



- Power-off the netbook fully before attempting to remove the battery.
- Flip your netbook upside down, and locate the sliding tabs near the battery.
- Slide both tabs inward so that the battery visibly moves away from the case of the computer.
- Release the tabs and pull the battery out.

## Step 2 — Memory Card Cover



- Flip the netbook over so you are looking at the bottom, and locate the two screws that hold the memory card cover.
- Next, take a Phillips PH1 screwdriver and unscrew the two screws.
  - ⓘ These screws will not release from the cover once they are unscrewed.
- If necessary, use the flat end of the spudger to assist in prying the cover away from the computer.

## Step 3 — Memory Card



- Carefully push the clips to the side, away from the memory card.
- Note: The memory module is spring-loaded and will pop out when the clips are detached.
- Slide the memory card straight out, holding it as shown to avoid getting skin oils on the electrical contacts.

To reassemble your device, follow these instructions in reverse order.