



Toshiba NB205 N330PK Speaker Removal

Written By: Mason McCaskill



🔧 TOOLS:

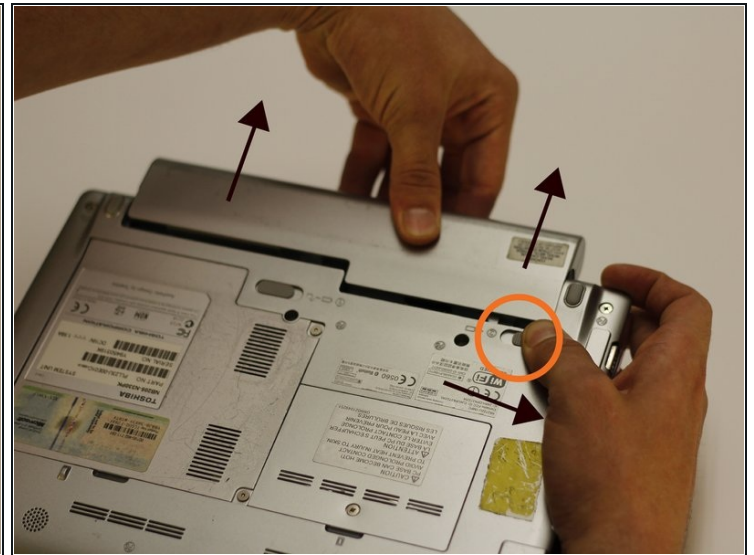
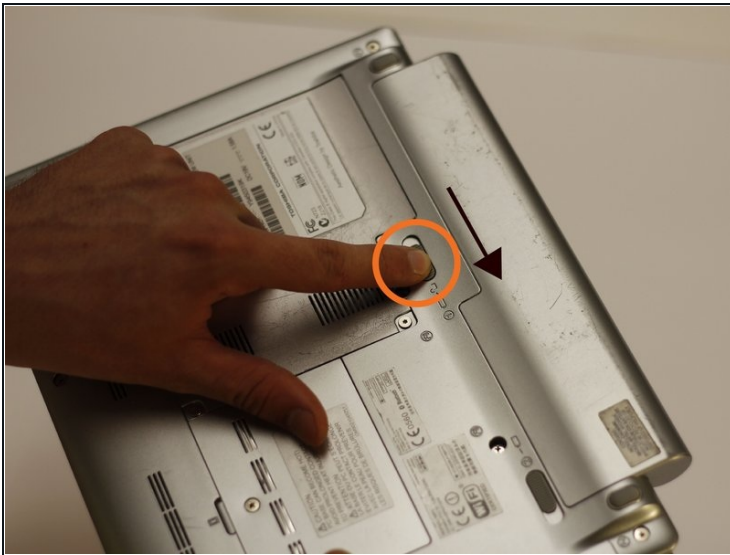
Phillips #0 Screwdriver (1)

Spudger (1)

64 Bit Driver Kit (1)

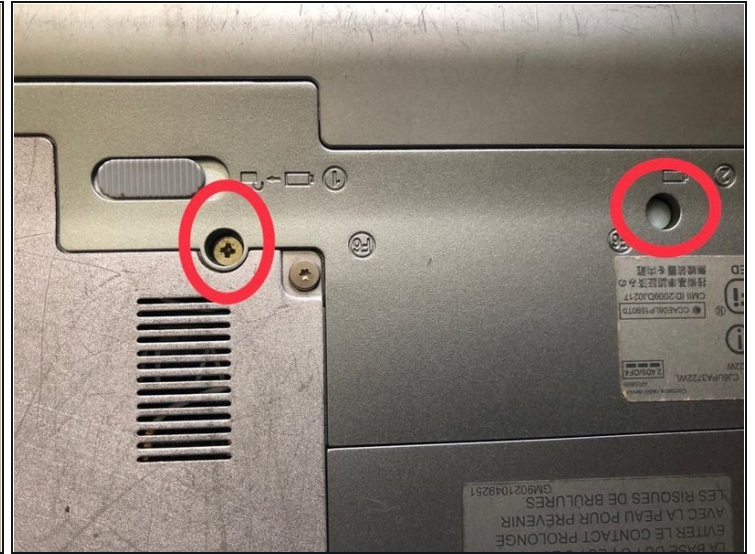
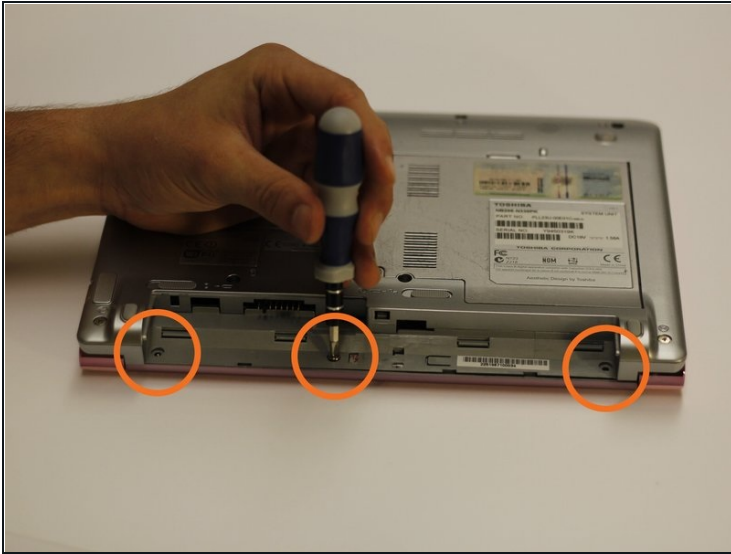
Tweezers (1)

Step 1 — Power Button



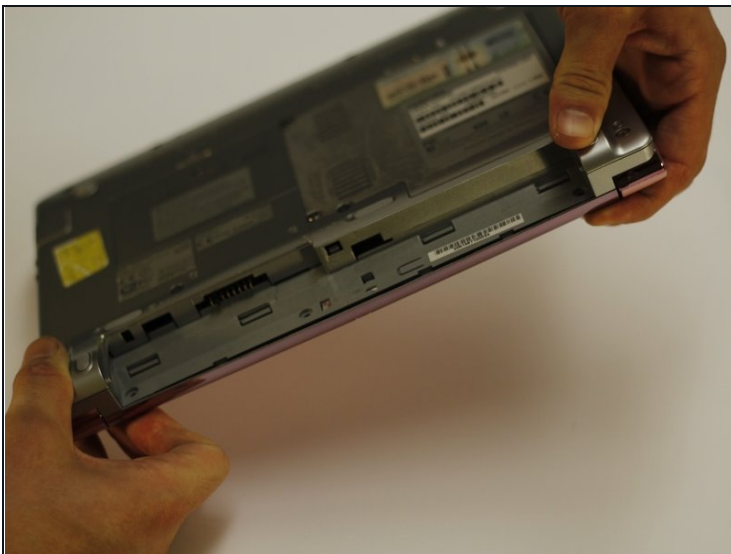
- Start by first removing the battery.
- Move the first release switch to the right position.
- Move the second release switch to the right position while pulling the battery towards the top of the netbook.

Step 2



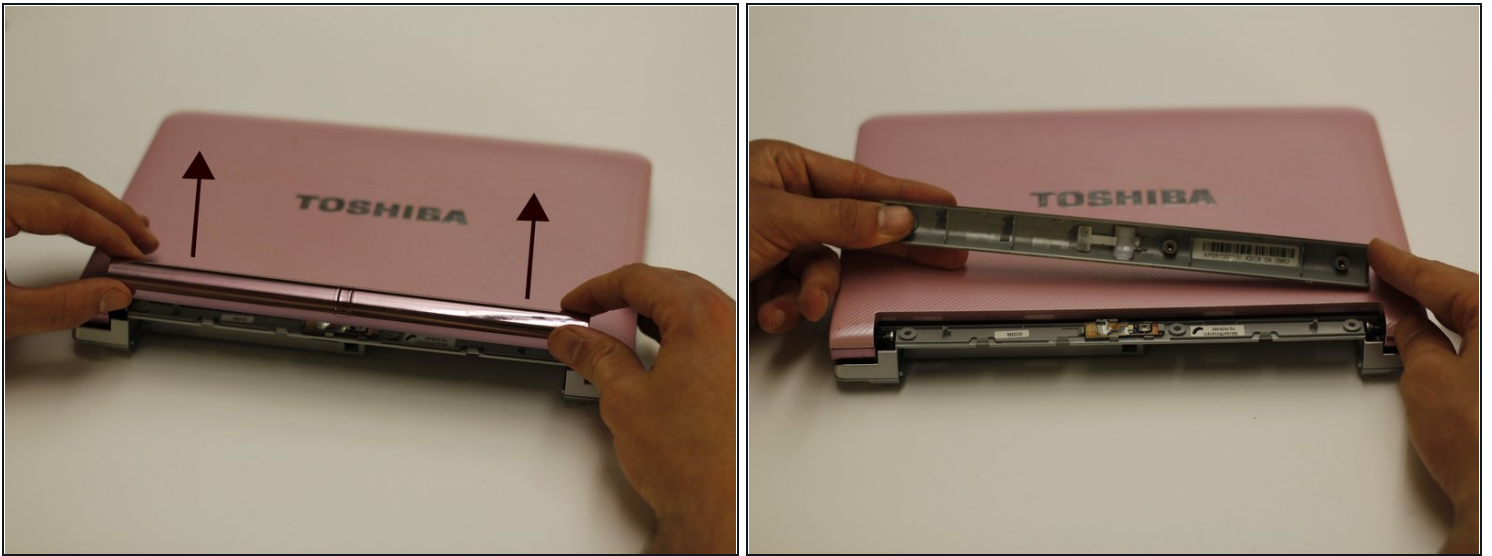
- Using the bit driver and a Phillips #0 bit, remove the three circled screws, 5 mm in length.
- Using the bit driver and a Phillips #0 Bit, remove the two circled screws labelled F6. (These hold the keyboard) one screw may be under a rubber stopper

Step 3



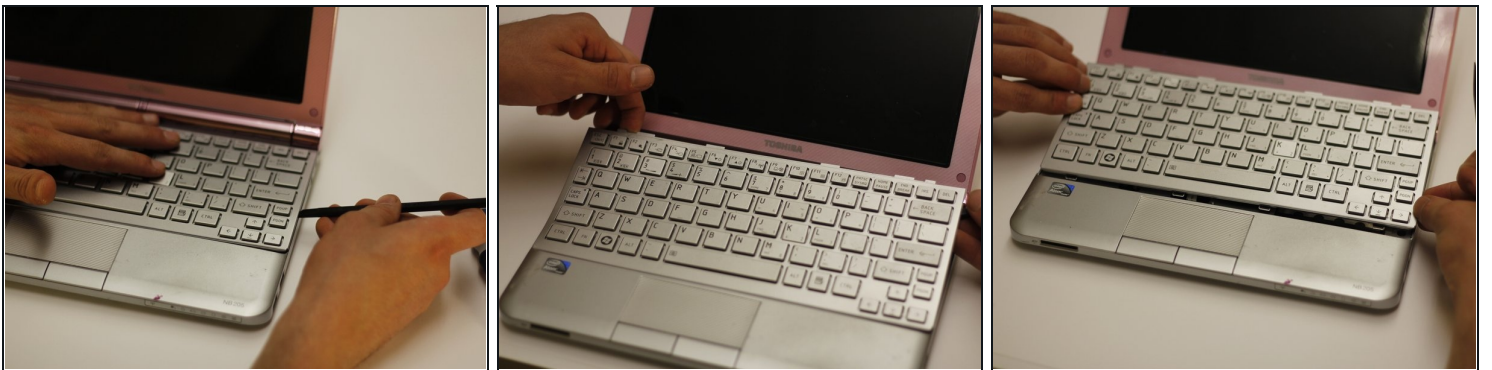
- While holding the top of the netbook, flip the netbook over.

Step 4



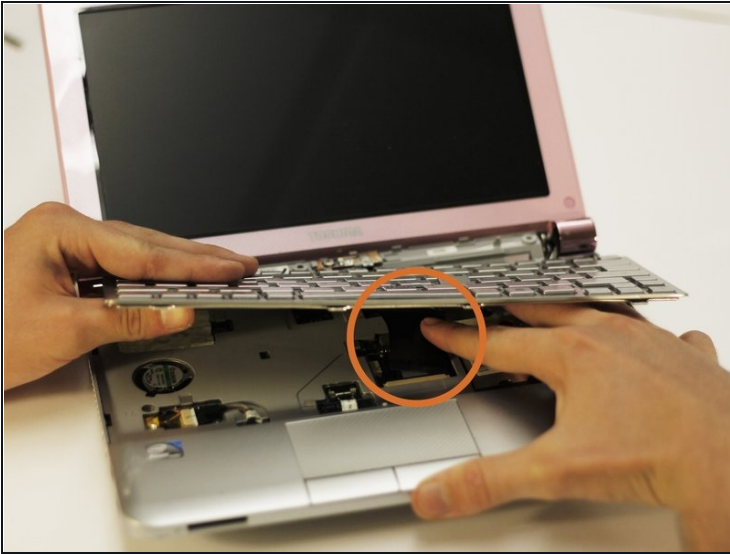
- Carefully lift off the power bar assembly for access to the button and receiver.

Step 5 — Speaker



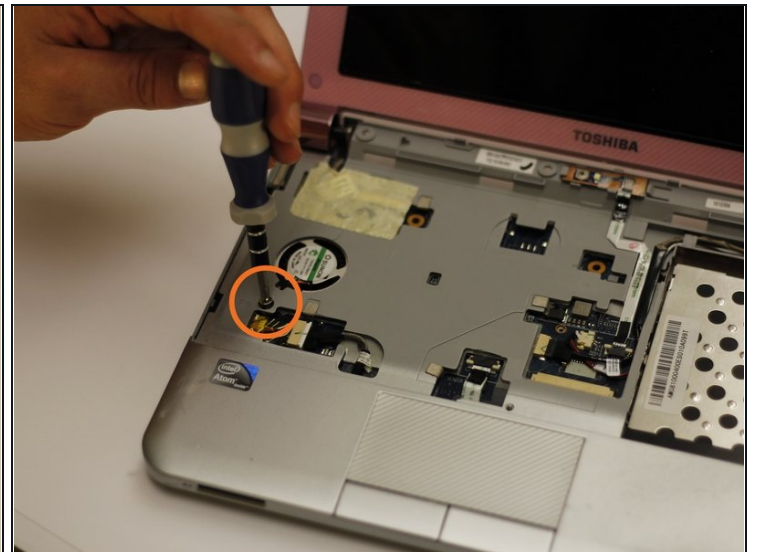
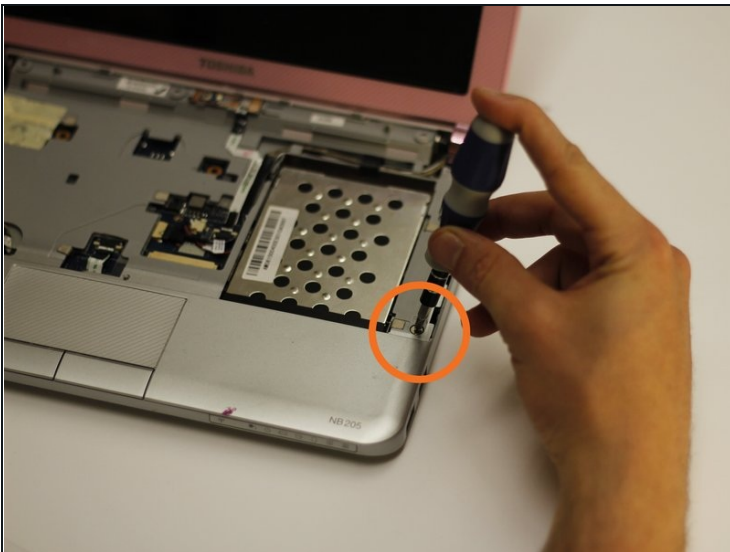
- Use the spudger to gently pry around the seam of the keyboard. This will release the keyboard assembly from the body.

Step 6



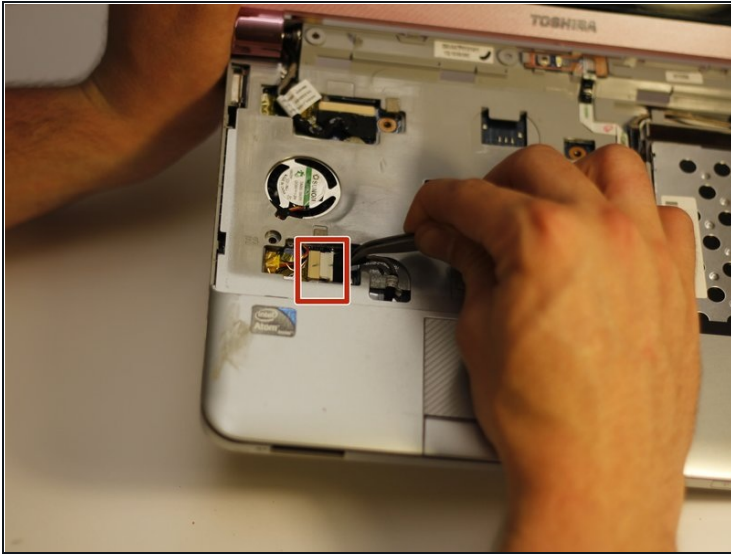
- Reach under the keyboard and disconnect the electrical connection.
- Lift the keyboard assembly out and away from the netbook.

Step 7



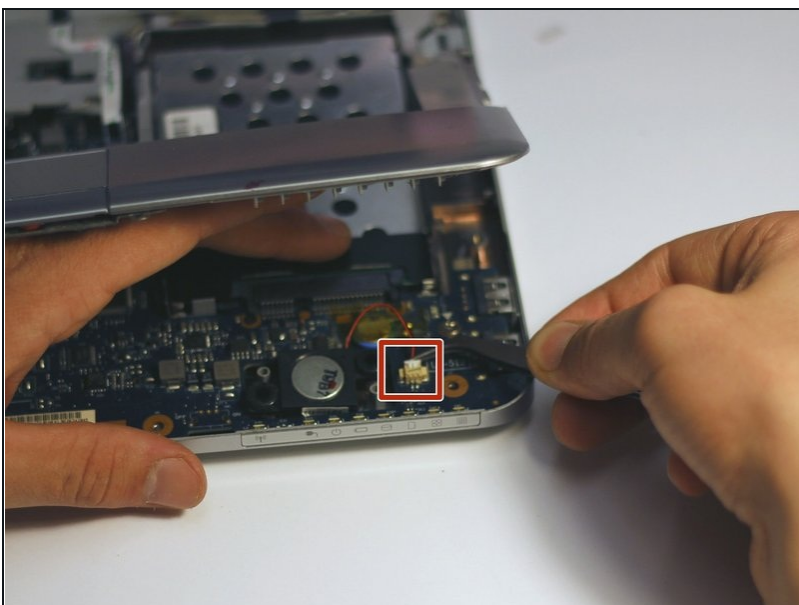
- Remove the two noted screws, 5 mm in length, with a bit driver and Phillips 3/16" tool.

Step 8



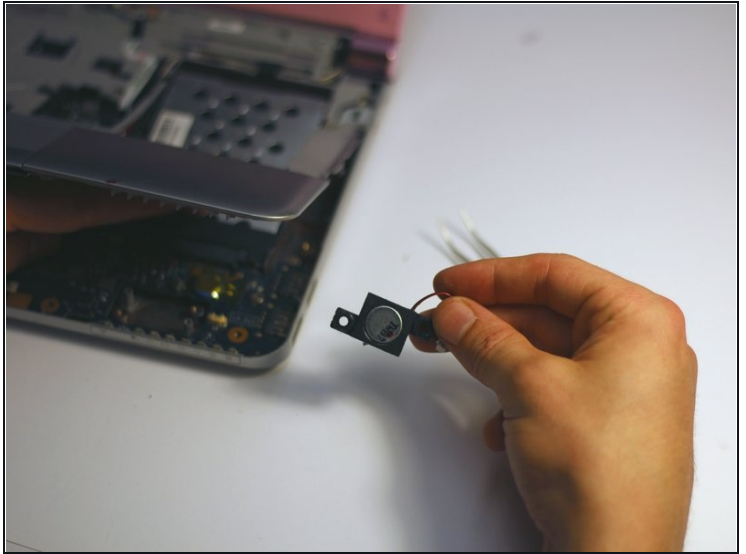
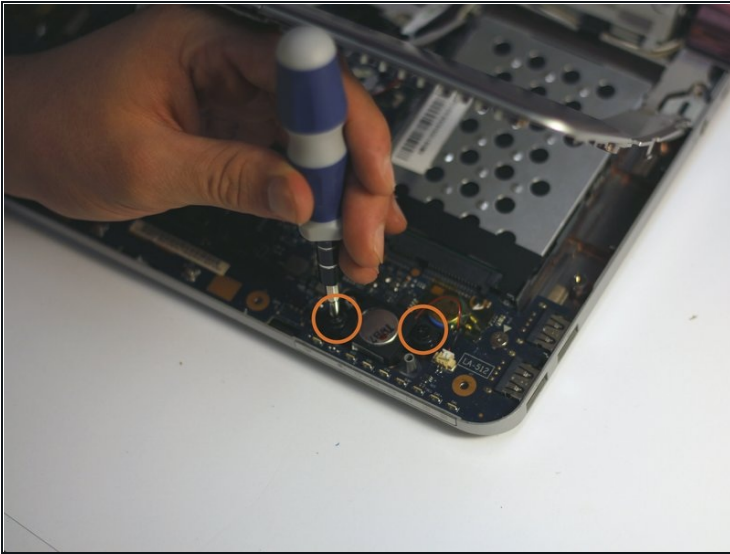
- Pull the cable away from the connector in the same direction as the individual wires using your hands or [tweezers](#).
⚠ Pull evenly on the full width of the cable so that no individual wires are overly strained.
- Use a spudger to gently pry the bezel from retaining clips.
- This will allow the keyboard bezel to lift off of the body.

Step 9



- Use the pointed tip of a spudger to carefully push on each side of the speaker connector to release it. Alternating from one side to the other, gently “walk” the connector out of its socket.
⚠ Always pull cables by their connectors and not the wires themselves.

Step 10



- Use Phillips #0 screwdriver to remove the two retaining screws on the speaker assembly.
- Lift out the old speaker assembly.

To reassemble your device, follow these instructions in reverse order.