



Disassembling Samsung TFT Color YP-T7J USB Connector Dock

For potential problems connecting your device to the computer and/or charger a new connector dock maybe needed.

Written By: Dylan Peters





TOOLS:

- [iFixit Opening Tools](#) (1)
 - [Phillips #0 Screwdriver](#) (1)
-

Step 1 — The Back Cover



- Remove the 2 screws on the back cover using a Phillips head #0 screwdriver.

Step 2



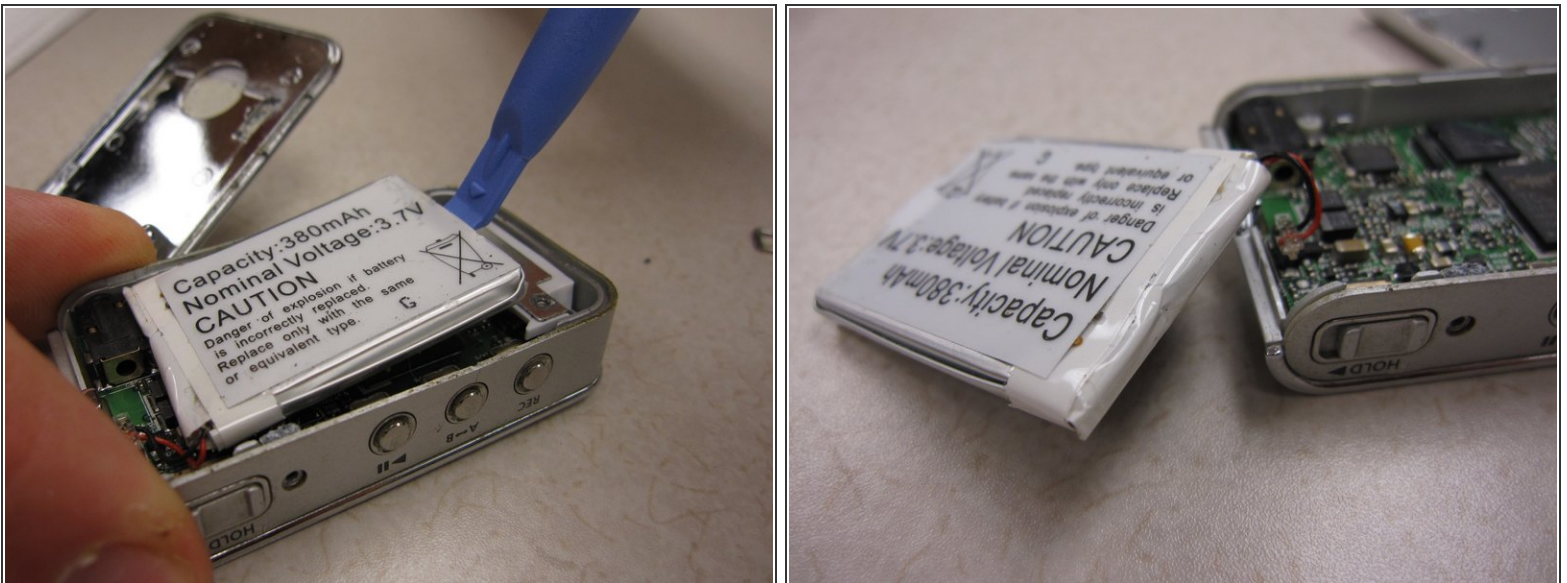
- Remove the screw on each side of the device using a Phillips head screwdriver.

Step 3



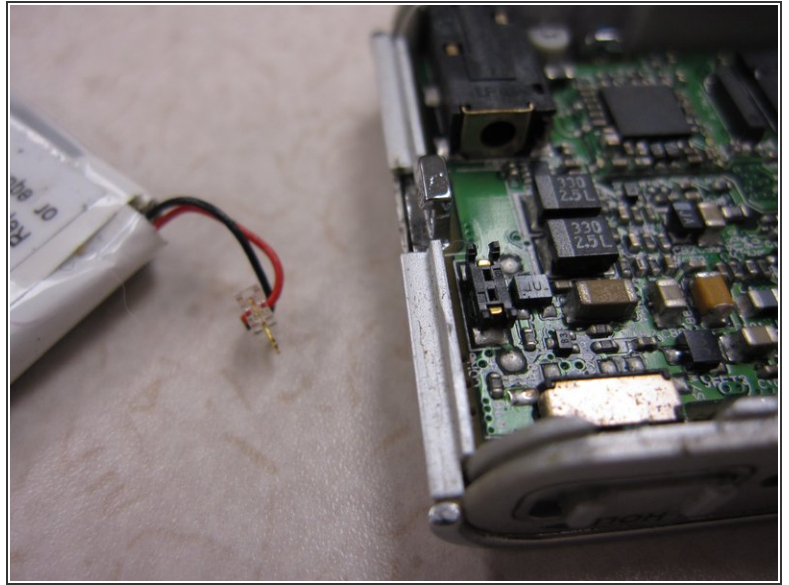
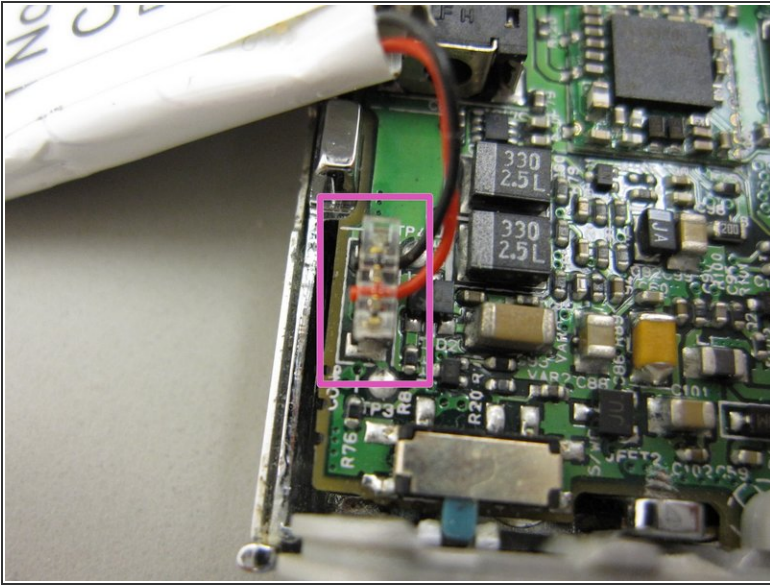
- Using the plastic opening kit, place the prying end of the kit into the opening created by removing the screws.
- Gently pry open the back cover. Insert the plastic opening tool in between the cover joints.

Step 4 — The Battery



- Once the back cover has been removed the battery will be visible.
- Pry the battery from the device.
- ⓘ NOTE: The battery should still be connected to the device

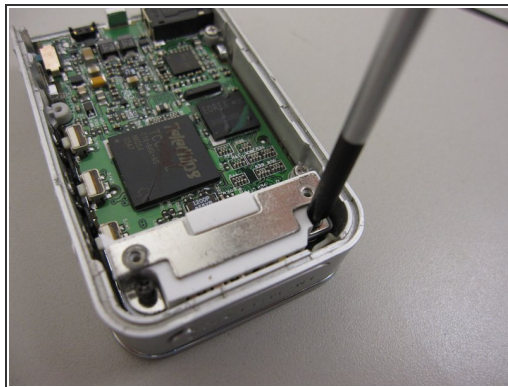
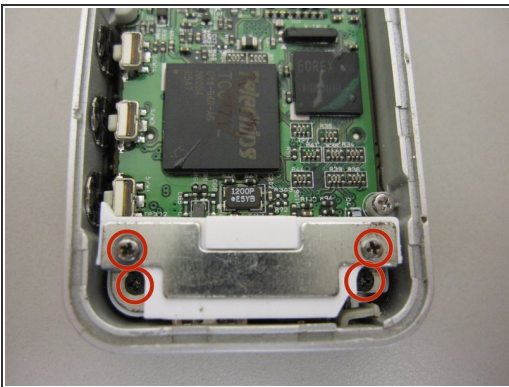
Step 5



- Unplug the battery connecting cables.

ⓘ NOTE: The battery now should be free from all connections to the device.

Step 6 — Disassembling Samsung TFT Color YP-T7J USB Connector Dock



- Once the battery has been removed you can see the motherboard.
- Unscrew 4 screws on the metal dock using a Phillips head screw driver.
- The USB connector can now be taken off of the device.

To reassemble your device, follow these instructions in reverse order.

