

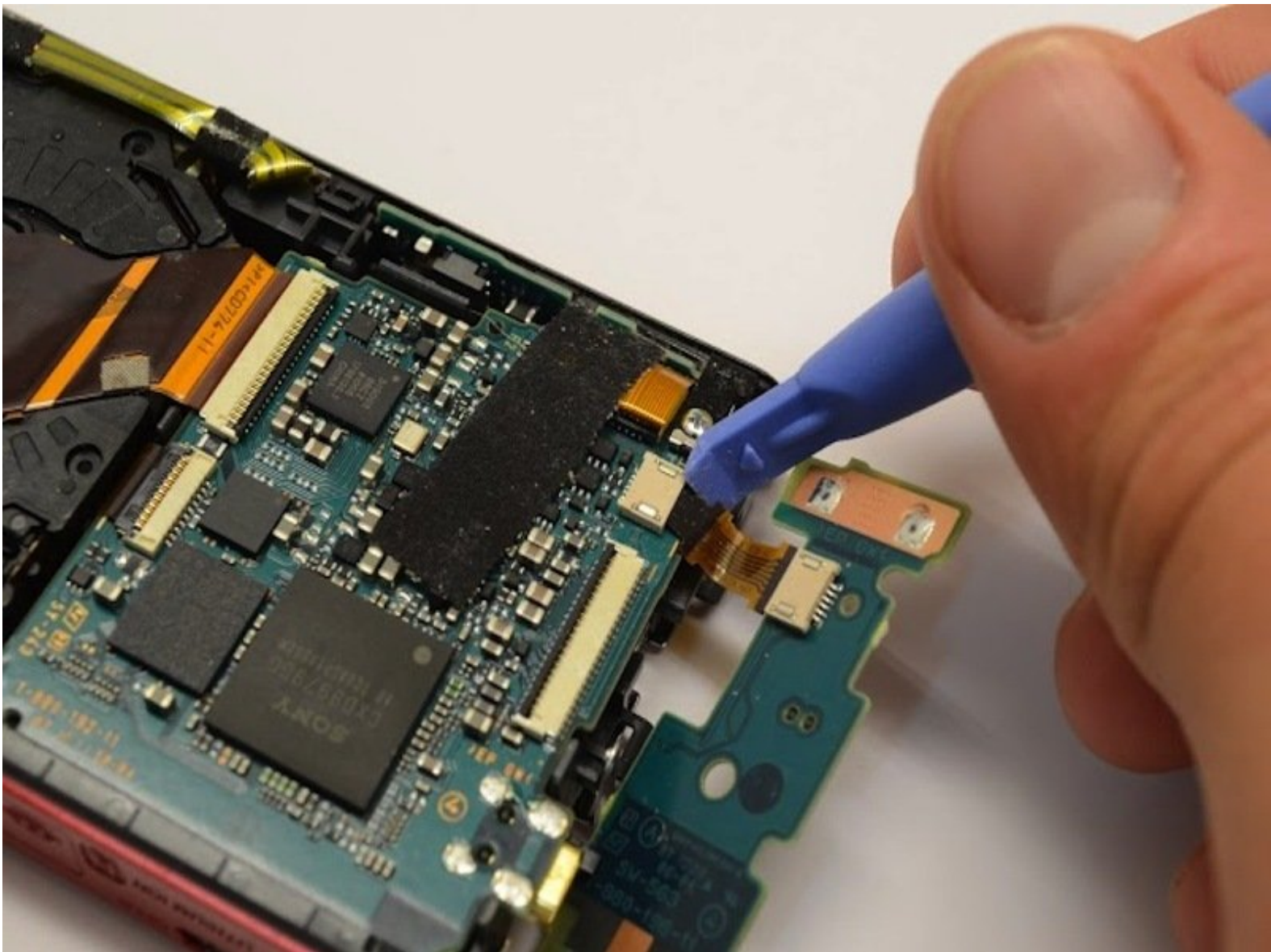


# Disassembling Sony Cyber-Shot DSC-W330

## Control Board

This guide will explain how to take apart the necessary components of the camera in order to access the control board.

Written By: Tanner

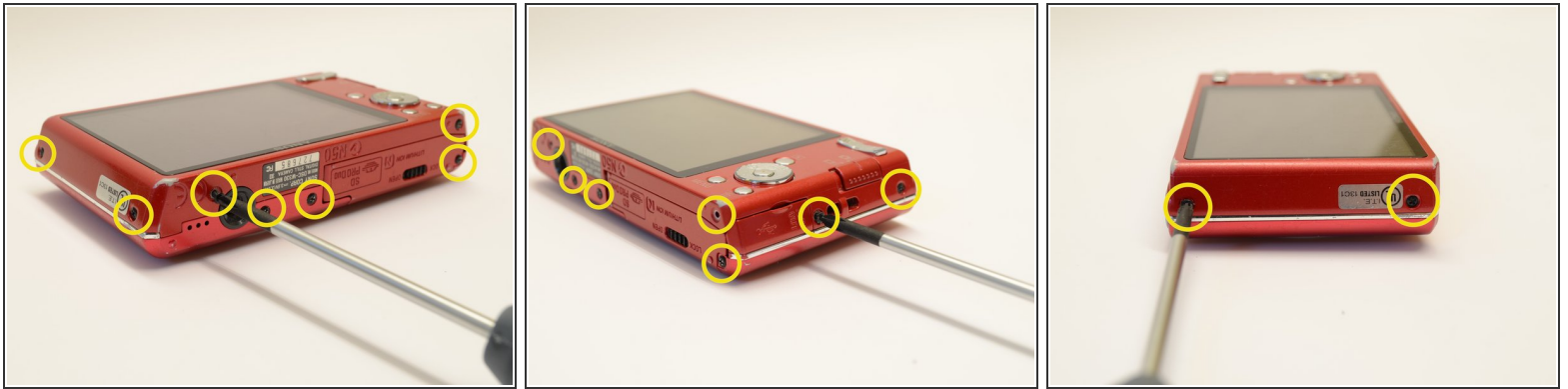




## TOOLS:

- [Phillips #00 Screwdriver](#) (1)
  - [iFixit Opening Tools](#) (1)
-

## Step 1 — Outer Casing



- Begin by placing the camera flat against a surface and remove the nine (9) black screws. Each screw is of the same length and can be used interchangeably

**i** Note: There are two (2) screws on each side, and five (5) on the bottom edge.

## Step 2



- Use a plastic opening tool to carefully pry off the front casing.

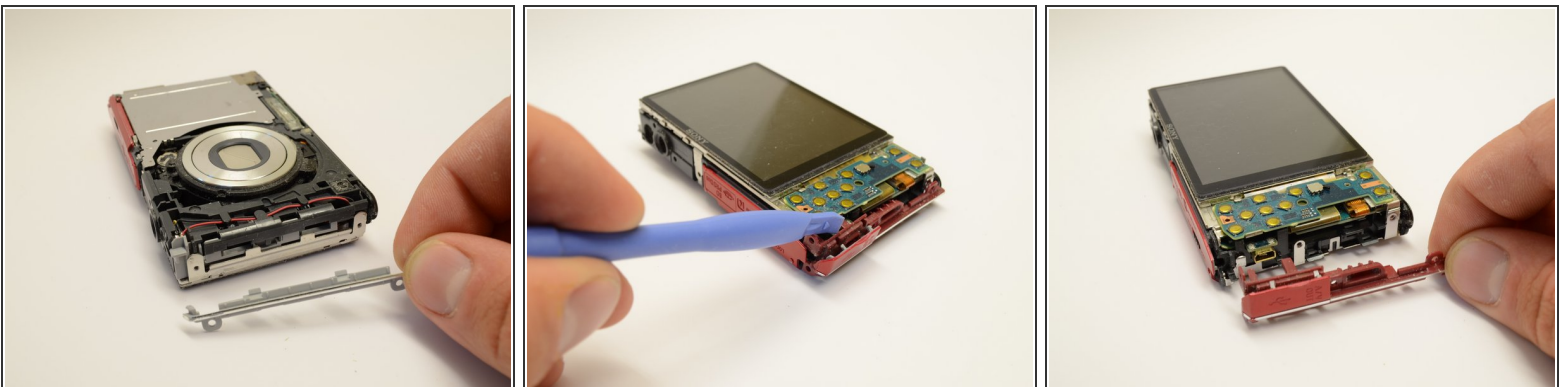
**!** Be careful to not to force the casing off. Simply move around the entire case separating where needed.

## Step 3



- Flip the camera over 180 degrees and similarly pry off the rear casing.

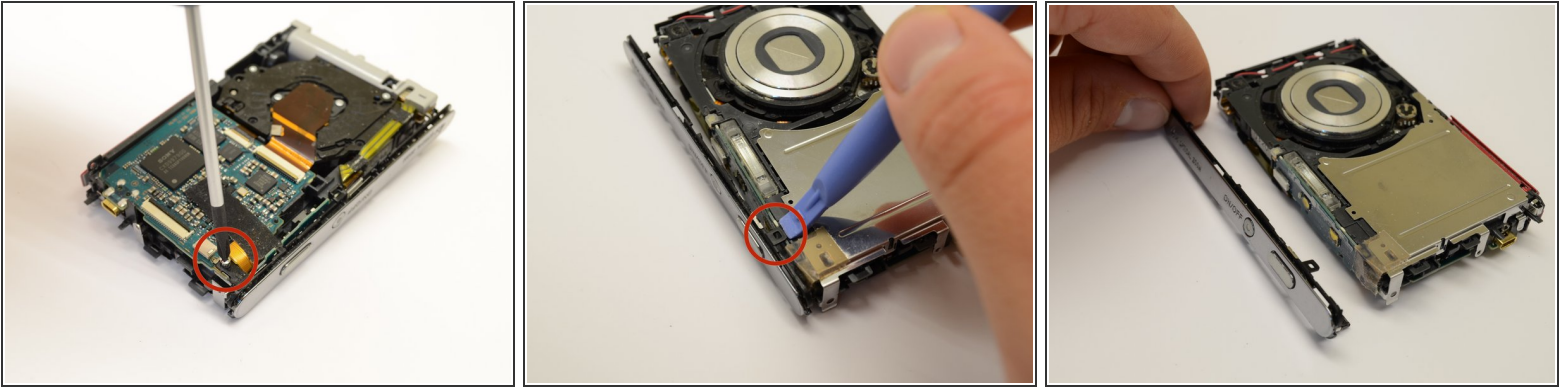
## Step 4



- Once the outer casings have been removed, the silver side trim should come loose from the camera.
- Place the camera with the lens facing down. Use the plastic opening tool to pry off the side panel with the USB plug.
- ⓘ *Note: If you wish to remove the top cover, see the [LCD Display Replacement](#) to remove the LCD screen before continuing to Step 5*

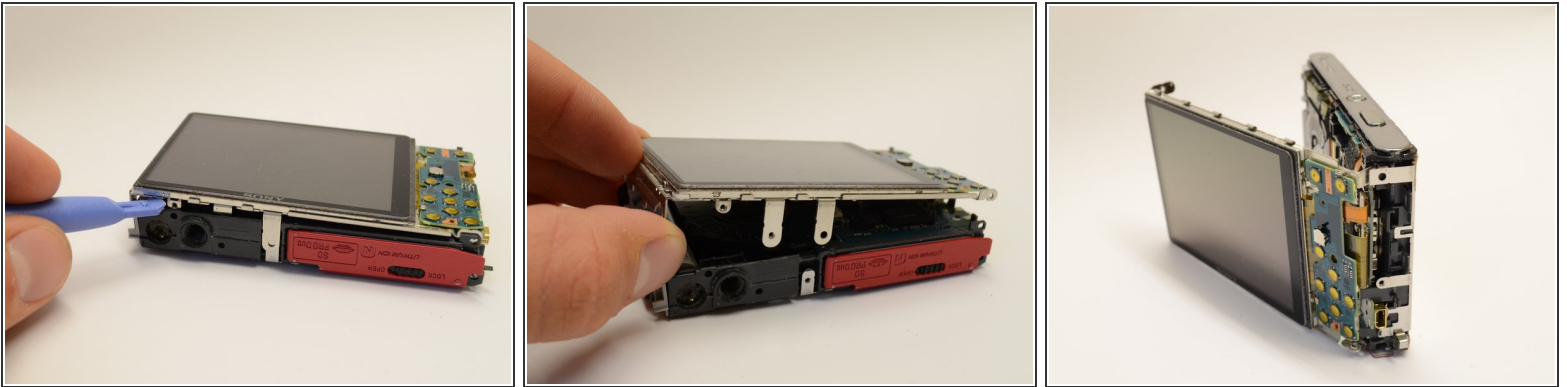


## Step 5



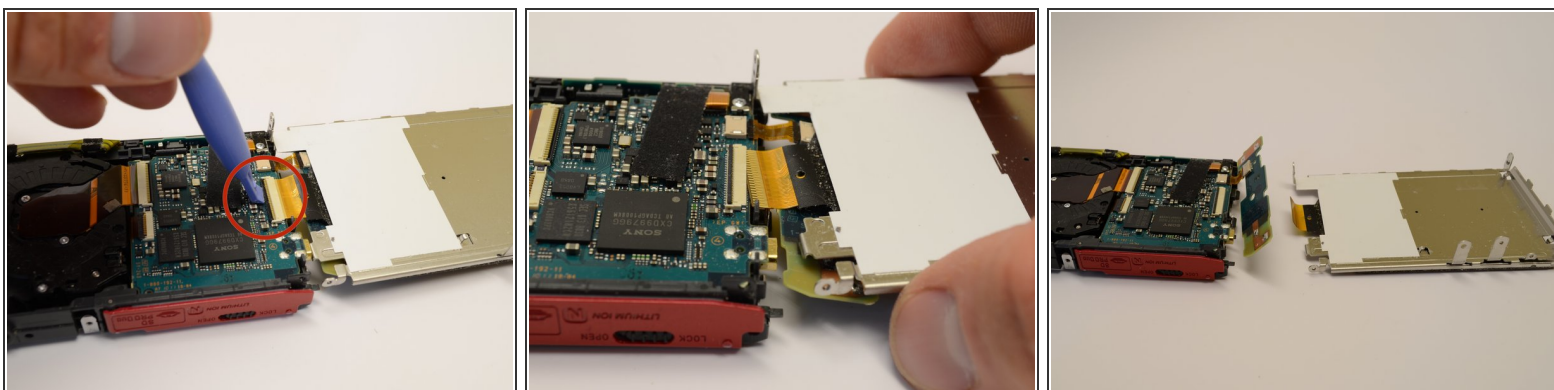
- Place the camera with the lens facing down. Use the phillips head screwdriver to remove the silver screw in the corner near the photo capture button.
- Flip the camera over. Use the plastic opening tool to detach the black clip near the capture button.
- Grasp the top cover and gently remove it from the camera body.

## Step 6 — LCD Display



- After the outer casing is removed, lay the device display side up
  - Gently pry the LCD screen from the body of the camera.
- ⚠ Be careful not to damage the ribbon cables, they are still attached to the camera.

## Step 7

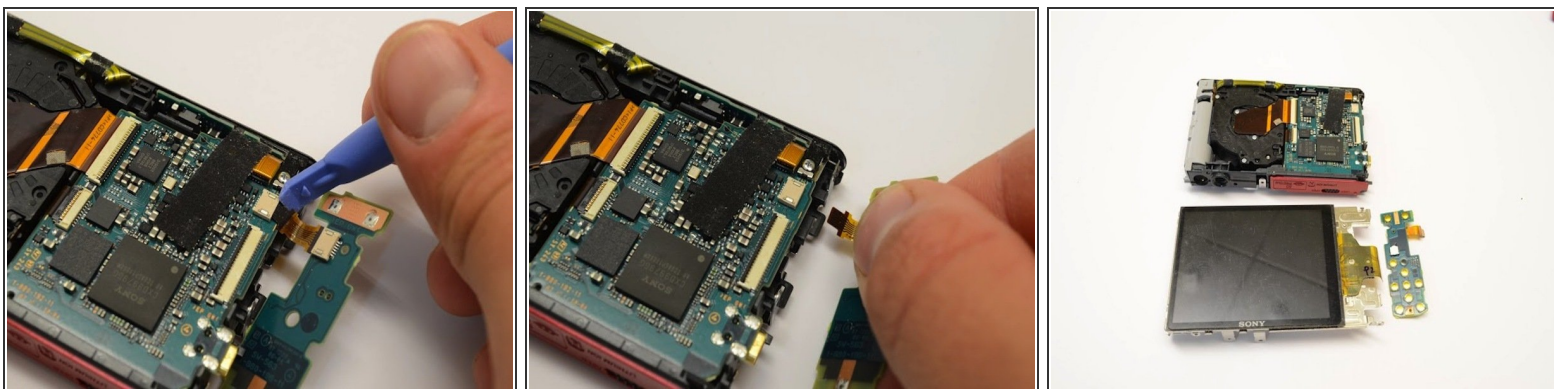


- Flip the LCD Assembly around the edge of the camera

**⚠ Note:** Be careful not to rip the assembly from the camera. It is still attached by the ribbon cables!

- Use the plastic opening tool to gently pry up the black tab locking the large ribbon cable to the battery housing.
- Grasp the LCD display with your fingers and gently pull the large ribbon cable out of the connector.
- The LCD display is now detached from the camera.

## Step 8 — Control Board



- Gently pry the tab holding the ribbon cable connecting the cameras control board to the camera sensor and battery housing.
- The camera control board is now removed and can be replaced if faulty.

To reassemble your device, follow these instructions in reverse order.