



Les Paul Wireless Guitar Peripheral Whammy Bar Replacement

This guide will show how to replace the Whammy...

Written By: Chris



INTRODUCTION

This guide will show how to replace the Whammy Bar. The whammy bar controls a feature in the game that increases the points while playing.

TOOLS:

TR10 Torx Security Screwdriver (1)

Step 1 — Les Paul Wireless Guitar Body Teardown



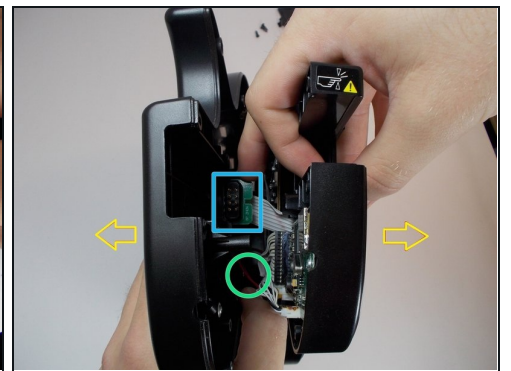
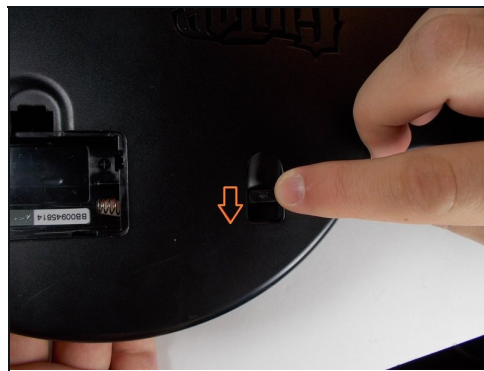
 Remove batteries

Step 2



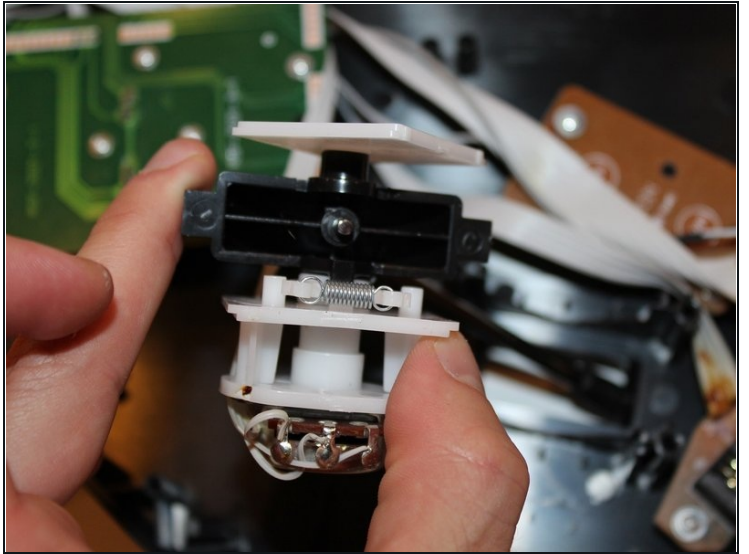
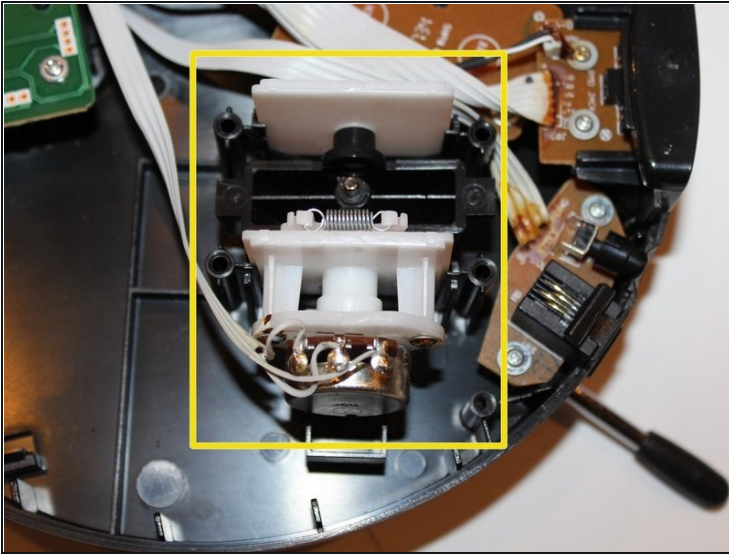
- Remove void warranty sticker
- The sticker is covering a torx screw

Step 3



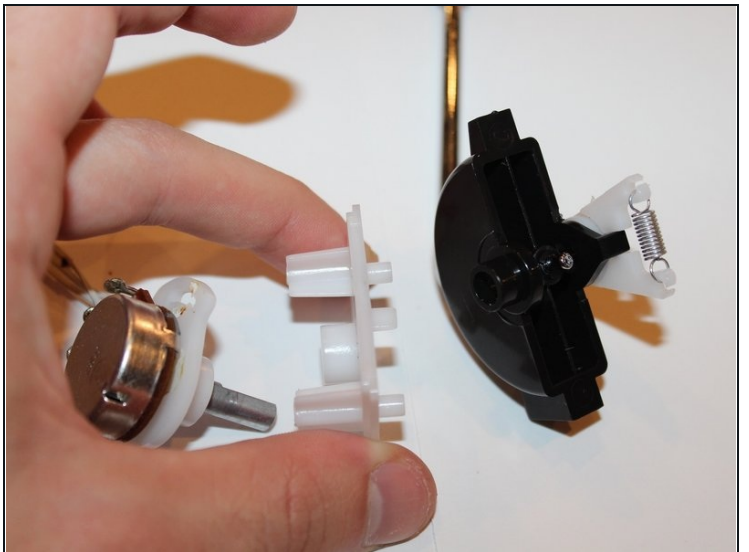
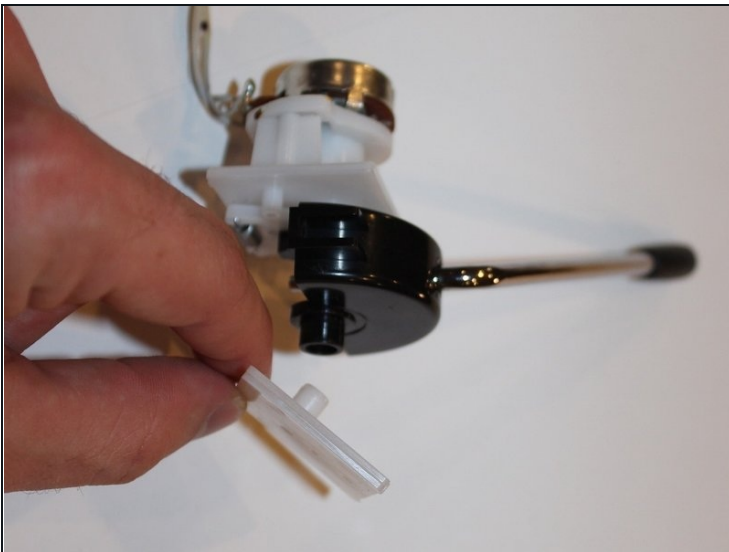
- Unscrew the 11 screws securing the back of the body using a T10 Torx screwdriver. Each screw is 1 cm long.
- Push level, this will detach the back of the guitar from the front.
- Carefully remove the back of the body
 - The battery pack cord is attached to both sides of the guitar, be careful not to tear it apart.
 - The neck connector may be stuck to the back so be sure to detach it before fully pulling

Step 4 — Whammy Bar



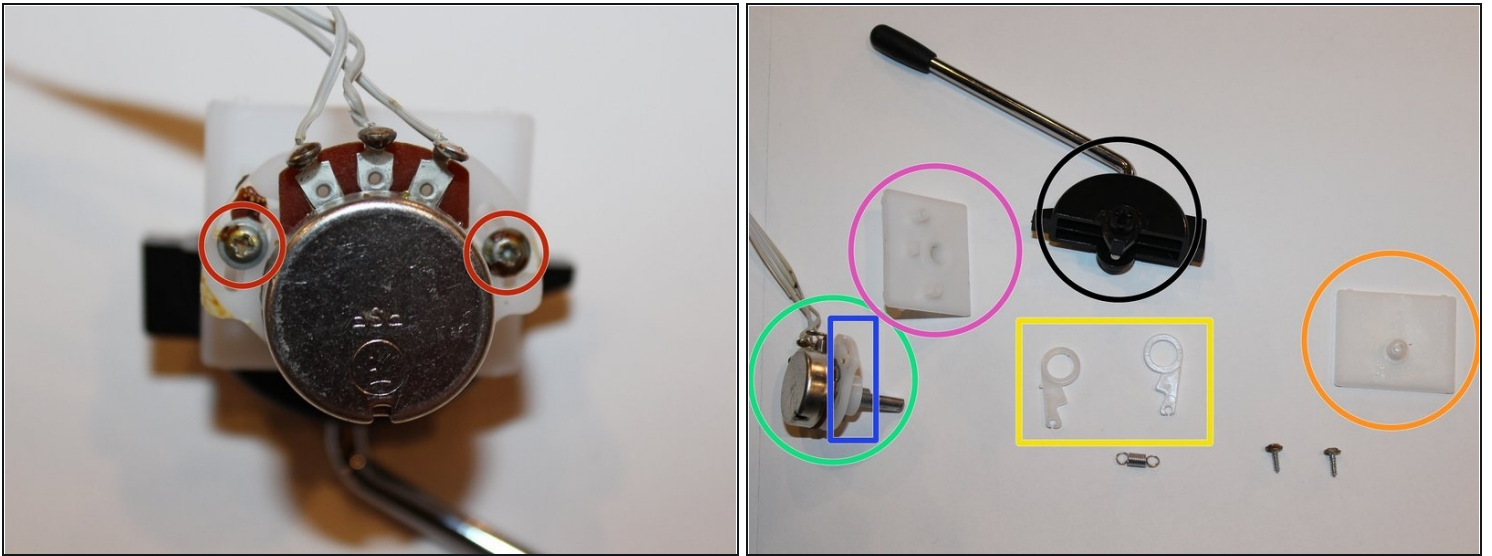
- Carefully remove whammy bar from its slot, it should slide out easily.
- Make sure the wires are not cut or damaged or it may need replacement.

Step 5



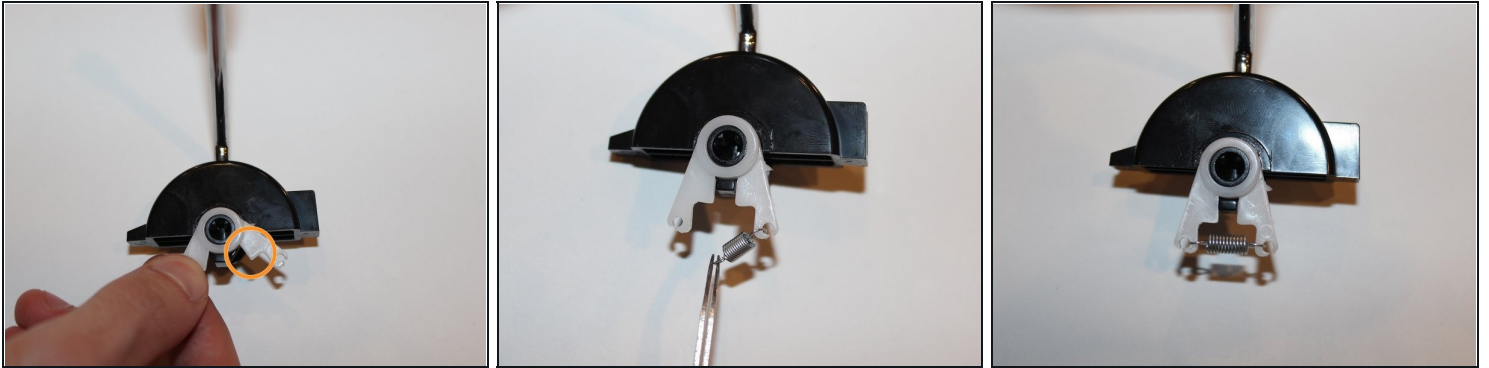
- Once taken out, the parts can come apart easily by pulling on the sides.
- The whammy bar should split into multiple parts.
- If any part is broken, then it will need to be replaced.

Step 6



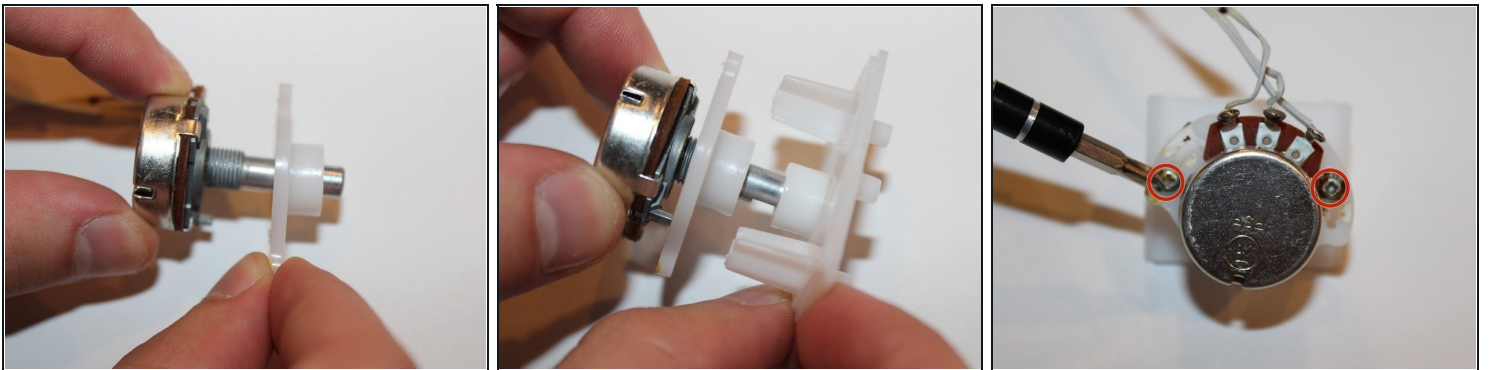
- Remove the two screws with a philips head screwdriver. Each screw is 0.8 cm.
- Slide the other plastic pieces off the metal piece so all pieces are separate. Each piece will be given a number and color to make repair easier.
- Whammy Bar
- Plastic piece 1
- Plastic piece 2
- Plastic piece 3 and 4
- Plastic piece 5
- Metal piece

Step 7



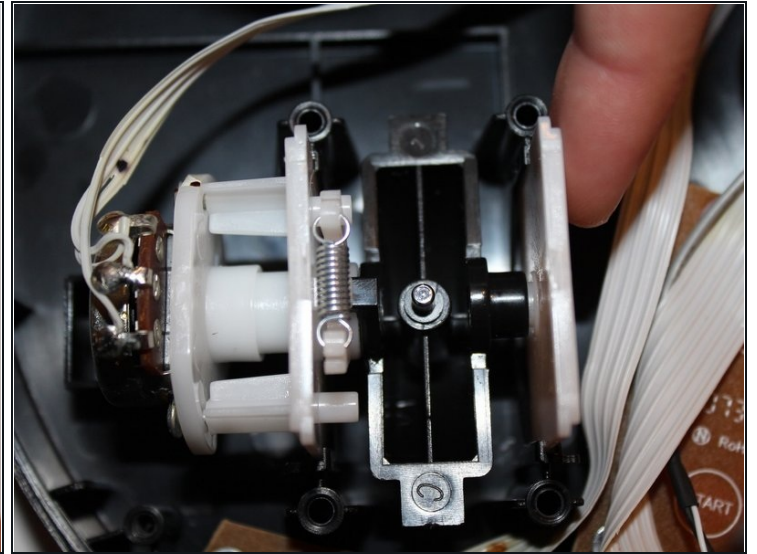
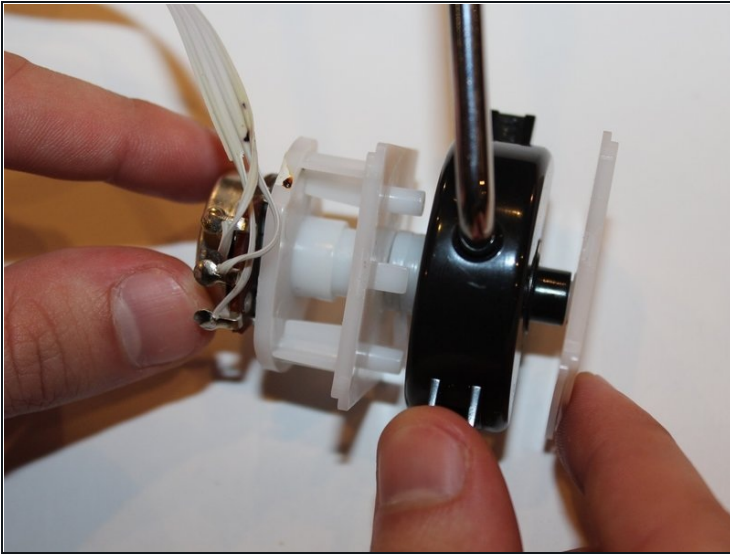
- Place plastic piece 3 and 4 in the whammy bar slot for them, and have them overlap.
- The pointed edges should be facing each other.
- Then use the [tweezers](#) or your hands to connect the spring from plastic piece 3 to 4.

Step 8



- Connect metal piece to plastic piece 5 and make sure the metal prongs fit into the holes for them.
- Next slide plastic piece 2 on the metal piece and make sure the three stubs are on the upper half.
- Then, make sure the metal piece holes and the plastic piece holes match up and screw them in place with the Philips head screw driver.

Step 9



- Connect each piece to the whammy bar.
- The metal piece will connect on the side with plastic pieces 3 and 4. Plastic piece 1 will be on the other side.
- Make sure each part slides in place correctly.
- Finally, slide the whammy bar back into place.

To reassemble your device, follow these instructions in reverse order.