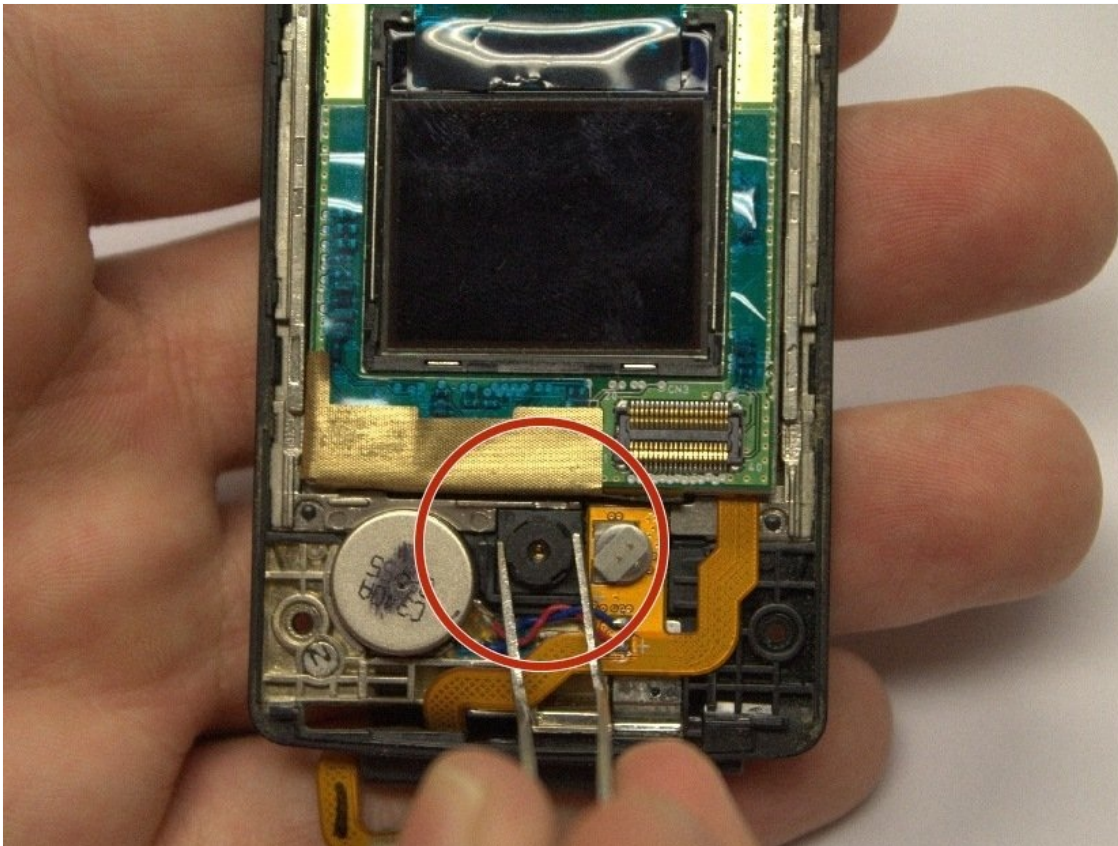




LG CU515 SKU 64743 Device Camera Lens Replacement

This guide will explain how to remove the...

Written By: Maggie



INTRODUCTION

This guide will explain how to remove the camera lens. This is a fairly difficult guide for the LG CU515 SKU 64743 Device. Removing the camera lens will require many tools and steps. However, this guide will take you through each step in detail so as to make the process as easy as possible.

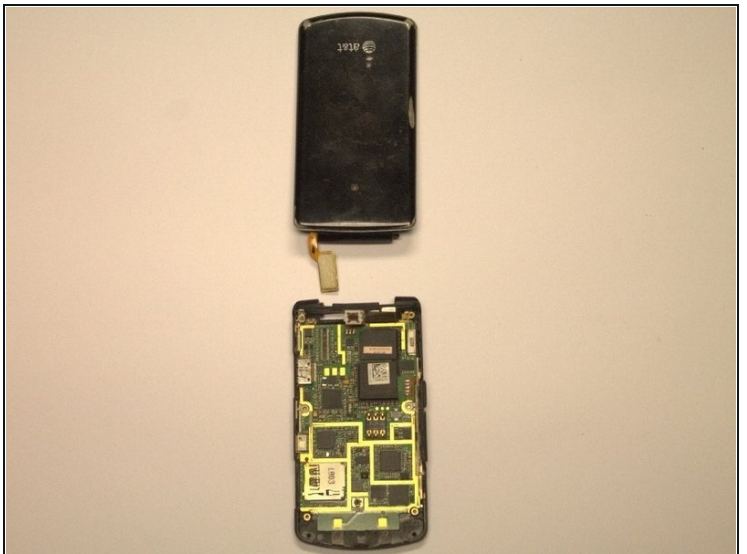
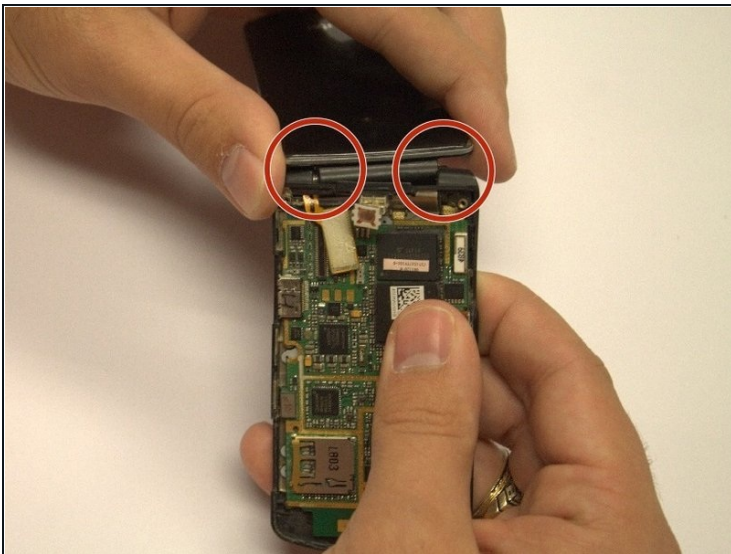
TOOLS:

Pry Bar (1)

Tweezers (1)

Phillips #000 Screwdriver (1)

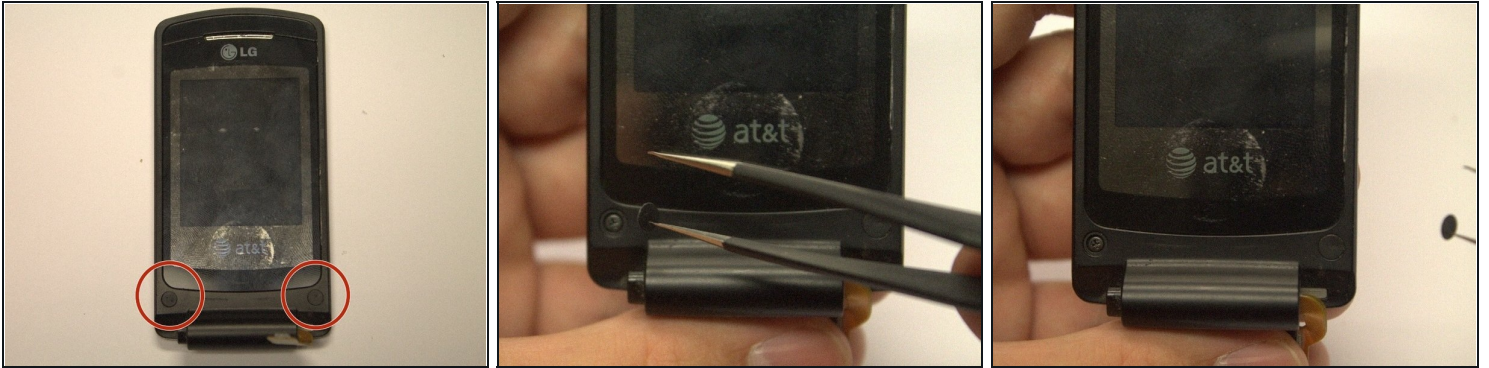
Step 1 — Front Cover



- Separate the top half of the clamshell from the bottom half by first locating the two hinges.
- Carefully pull to one side and immediately up. The top part should pop out of the hinge. Next slide the opposite direction to pull out of the other hinge.

 *This will take a lot of force, so be careful not to break the plastic hinge.*

Step 2



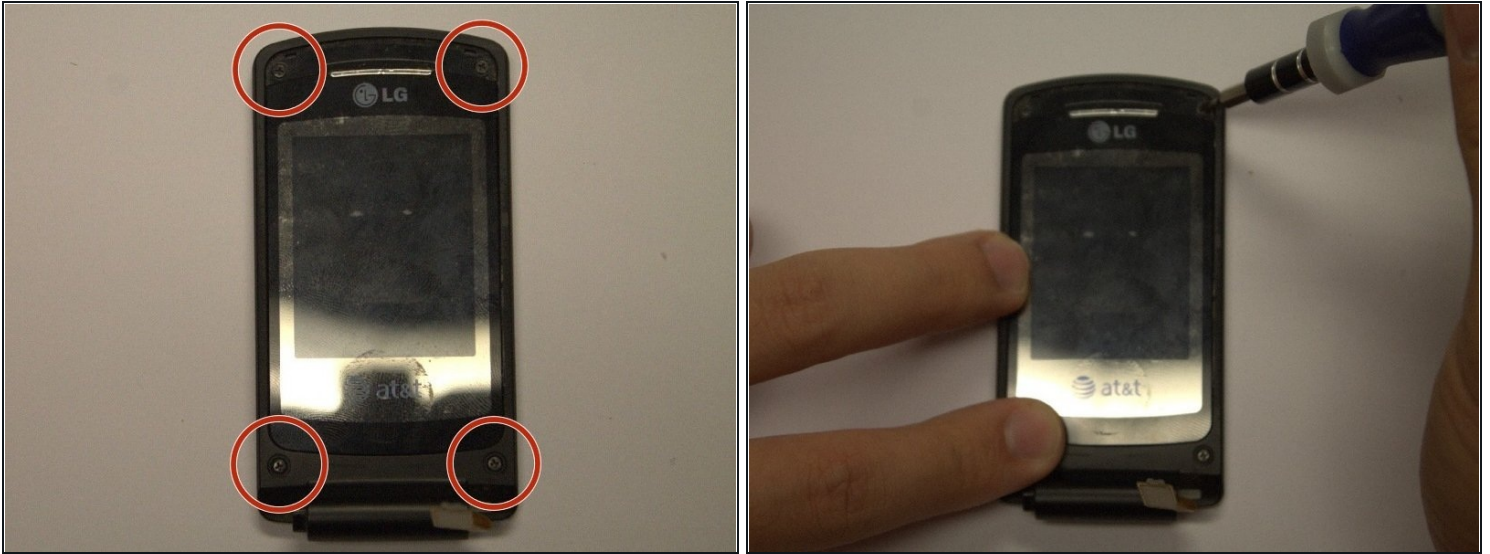
- Locate the two small circles located at the bottom left and right corners of the main screen.
- Remove the two small rubber dots covering the screw heads using the [tweezers](#).
 - ⓘ *The sharp ends of the tweezers can be stuck into the rubber dots in order to remove them.*

Step 3



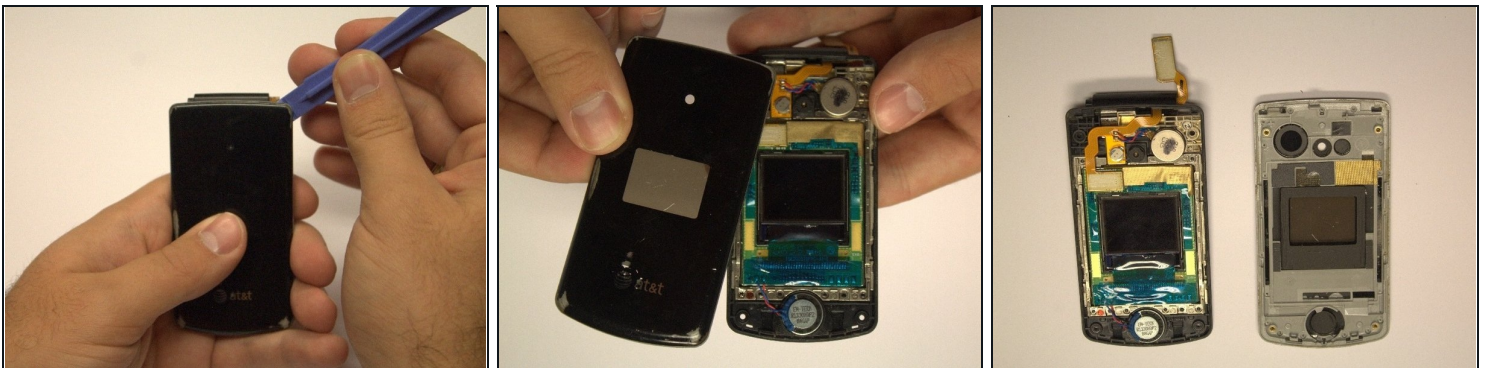
- Locate the rubber strip found above the main screen. Use the pry bar to remove the rubber strip. This exposes the screws in the upper left and right hand corner.

Step 4



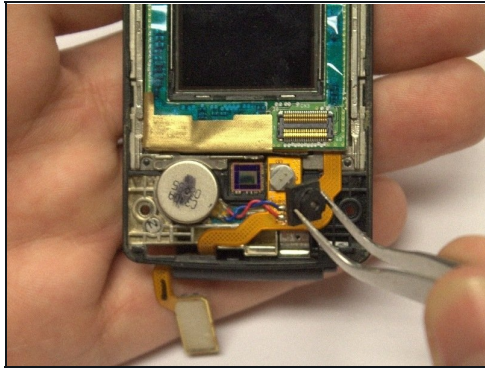
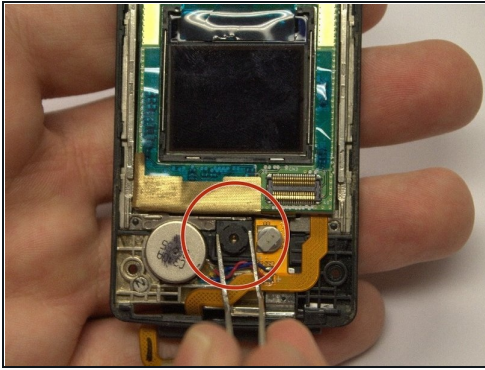
- Use the small Phillips-head screwdriver to remove four 3mm screws exposed during steps 1 and 2.

Step 5



- Using the pry bar, remove the front cover of the phone.
 - ① *It may be necessary to run the pry bar along the length of the perimeter to separate the front cover from the rest of the phone.*
- Once loose, the front cover should easily be pulled away from the phone, as shown in the second picture.

Step 6 — Camera Lens



- Rotate the phone 180 degrees and locate the small black square shown in the photo. Using the [tweezers](#), pinch the raised circular lens casing and remove.

To reassemble your device, follow these instructions in reverse order.